

FILE NAME: A:\PROJECTS\2023\2023-04-04-NEW CHANGE HOUSE\2023-04-04-NEW CHANGE HOUSE-01.dwg  
 PLOT DATE: 04/04/2023 10:00:00 AM  
 PLOT BY: B. POLYCHEMIE

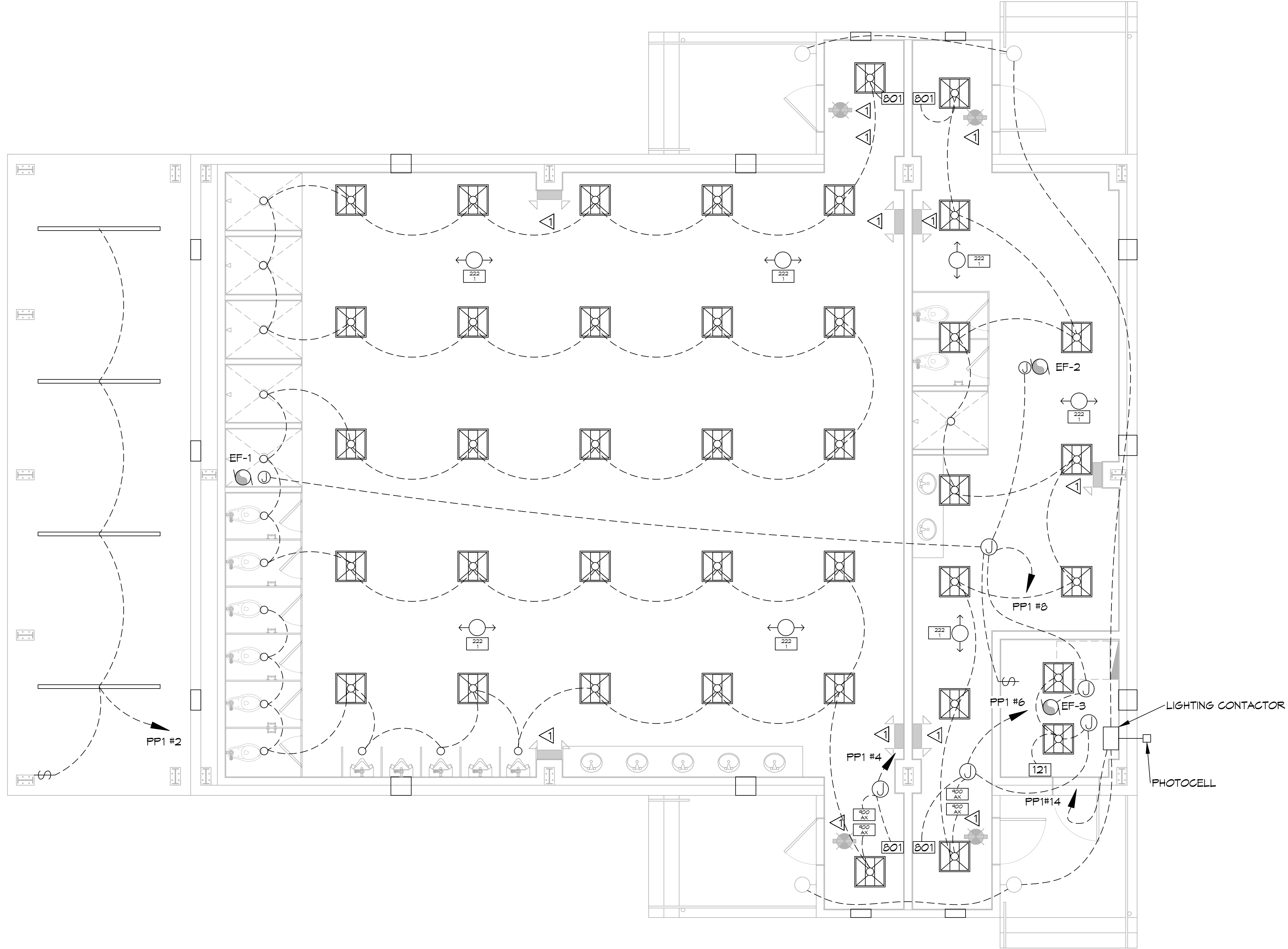
SENSOR/WORX-BOM			
121	SNX-121-XX	1	WALL SWITCH SENSOR, DUAL TECH, AUTO ON
222 1	SNX-222-1	7	CEILING SENSOR, DUAL TECH, LARGE MOTION 360 DEGREES, LOW VOLTAGE
801	SNX-801-XX	8	MOMENTARY WALL SWITCH, LOW VOLTAGE
900 AX	SNX-900-AX	4	POWER PACK, 16A, 120/277VAC, AUXILIARY INPUT

LIGHTING SCHEDULE	
F1	6" NET LOCATION DOWN LIGHT 1000L 40K J-BOX MOUNT ELITE PART # RL678-1000L-DIM10-40K-90-1/4"X1/4"
F2	2X2 RECESSED VOLUMETRIC DAMP RATED 3000L 40K ELITE LIGHTING PART # 22-OAT1-LED 2000L-3000L-4000L-DIM10-MVOLT-35K/40K/50K-85
F3	8" SURFACE MOUNT LED 8000L 40K ELITE LIGHTING PART # 8-OEG-LED-8000L/8000L/10000L-DIM10-MVOLT-35K/40K/50K-85

LIGHTING LEGEND	
F1 RECESSED LIGHT FIXTURE (9" AFF)	JUNCTION BOX
F2 SUSPENDED LIGHT FIXTURE (9" AFF)	SINGLE POLE SWITCH LIGHT SWITCH (8" AFF)
F3 STRIP FIXTURE	3-WAY LIGHT SWITCH (8" AFF)
EXTERIOR LIGHT FIXTURE ON SENSOR	EXHAUST FAN - SEE MECHANICAL
EMERGENCY LIGHT FIXTURE - WALL MOUNTED (8" A.F.F.)	EXIT LIGHT FIXTURE - ABOVE DOOR
	HOME RUN

GENERAL LIGHTING NOTES	
1.	ALL WORK SHALL COMPLY WITH APPLICABLE NATIONAL, STATE, AND LOCAL CODES, RULES, REGULATIONS, AND REQUIREMENTS OF THE SERVICE UTILITY COMPANY.
2.	GENERAL CONTRACTOR SHALL NOTIFY THE ARCHITECT IMMEDIATELY IF ANY CONFLICTS OCCUR BETWEEN LIGHTING AND ANY OTHER TRADE. DO NOT PROCEED WITH INSTALLATION IN THAT AREA UNTIL CONFLICT HAS BEEN RESOLVED TO THE SATISFACTION OF THE ARCHITECT AND ENGINEER.
3.	REFER TO ARCHITECTURAL DRAWINGS FOR EXACT LOCATION AND MOUNTING INSTRUCTIONS FOR ALL LIGHT FIXTURES. NOTIFY THE ARCHITECT AND ENGINEER OF ANY DISCREPANCIES BETWEEN THESE PLANS AND THE ARCHITECTURAL PLANS RELATING TO QUANTITY, TYPE AND LOCATION OF DEVICES AND/OR FIXTURES.
4.	WHEN SPECIFIC LIGHT FIXTURE HAS BEEN SPECIFIED IN THE FIXTURE SCHEDULE, ELECTRICAL CONTRACTOR SHALL PROVIDE COMPLETE ASSEMBLY INCLUSIVE ALL PARTS AND HARDWARE TO INSURE PROPER FUNCTIONING FIXTURE.
5.	ALL CONDUCTORS SHALL BE A MINIMUM OF #12 AWG UNLESS NOTED OTHERWISE.
6.	ALL 120V RUNS LONGER THAN 60 FEET SHALL BE #10 AWG AND 277V RUNS LONGER THAN 150 FEET SHALL BE #10 AWG UNLESS NOTED OTHERWISE.
7.	ALL CONDUCTORS SHALL BE COPPER.
8.	WHERE CONDUCTOR SIZES ARE NOTED ON DRAWINGS, THAT WIRE SIZE SHALL BE THROUGH THE ENTIRE RUN UNLESS OTHERWISE NOTED.
9.	MOUNTED LIGHT SWITCHES 48" AFF UNLESS NOTED OTHERWISE ON ARCHITECTURAL DRAWINGS.
10.	WHERE MORE THAN ONE SWITCH OCCURS IN THE SAME LOCATION, THEY SHALL BE INSTALLED IN A GANG TYPE BOX UNDER ONE COVER PLATE. ALL GANGED SWITCHES SHALL HAVE A COMMON SEAMLESS FACEPLATE. EACH MULTI-GANGED BOX SHALL BE NO MORE THAN SIX (6) SWITCHES WIDE. WHERE MORE THAN SIX (6) SWITCHES ARE SHOWN AT ONE (1) LOCATION, ADDITIONAL MULTI-GANGED BOXES SHALL BE STACKED VERTICALLY AND THE WIDTH OF THE MULTI-GANGED SHALL BE AS EVEN AS POSSIBLE.
11.	EACH DIMMER SWITCH SHALL HAVE A WATTAGE RATING 25% HIGHER THAN THE TOTAL WATTAGE OF ALL LIGHTS TO BE CONTROLLED BY THE DIMMER. DIMMER SIZES 600, 1000, 1500, AND 2000 WATTS. LUTRON NOVA T-STAR. WHERE SWITCHES ARE GANGED WITH DIMMERS, THE SWITCHES SHALL ALSO BE LUTRON NOVA T-STAR. FLUORESCENT AND LOW VOLTAGE DIMMERS SHALL BE LUTRON NOVA T-STAR.
12.	WHERE FLUORESCENT FIXTURES ARE SHOWN TO BE DIMMED, THE FIXTURES SHALL HAVE DIMMING TYPE BALLASTS WHICH ARE COMPATIBLE WITH THE SPECIFIED DIMMERS.
13.	WHERE LED FIXTURES/LAMPS ARE SHOWN TO BE DIMMED, THE DIMMER SHALL BE COMPATIBLE WITH THE FIXTURE/LAMP SPECIFIED OR PROVIDED.
14.	ALL EMERGENCY EXIT LIGHT FIXTURES SHALL HAVE 90 MINUTE BATTERY BACKUP WITH INTEGRAL TEST BUTTON AND SHALL BURN CONTINUOUSLY.
15.	ALL FLUORESCENT FIXTURES THAT UTILIZE DOUBLE-ENDED LAMPS AND CONTAIN BALLASTS SHALL BE PROVIDED WITH A DISCONNECTING MEANS IN ACCORDANCE WITH NEC 410.136.

KEYED NOTES	
	PROVIDE CONNECTION TO UN-SWITCHED HOT OF LIGHTING CIRCUIT AND SHALL HAVE 90 MINUTE EMERGENCY BATTERY BACKUP.



SCALE: 1/4"=1'-0"

**DAMMON ENGINEERING, INC.**  
 LOUISIANA & MISSISSIPPI  
 www.dammonengineering.com  
 info@dammon.com  
 PH: 985.649.5832

REVISIONS	DATE
#	DESCRIPTION

SEAL:

**NEW CHANGE HOUSE**  
**SNF POLYCHEMIE**  
 3030 FORT HARBOR DR. RD. D  
 BAY ST. LOUIS, MS. 39520  
 JOB No: 2472 DATE: 04-04-2023  
 DRAWN BY: C&D CHECKED BY: BAW

SHEET TITLE:  
 LIGHTING PLAN  
 DRAWING NUMBER:  
**E102**  
 SHEET No: 14 of 15