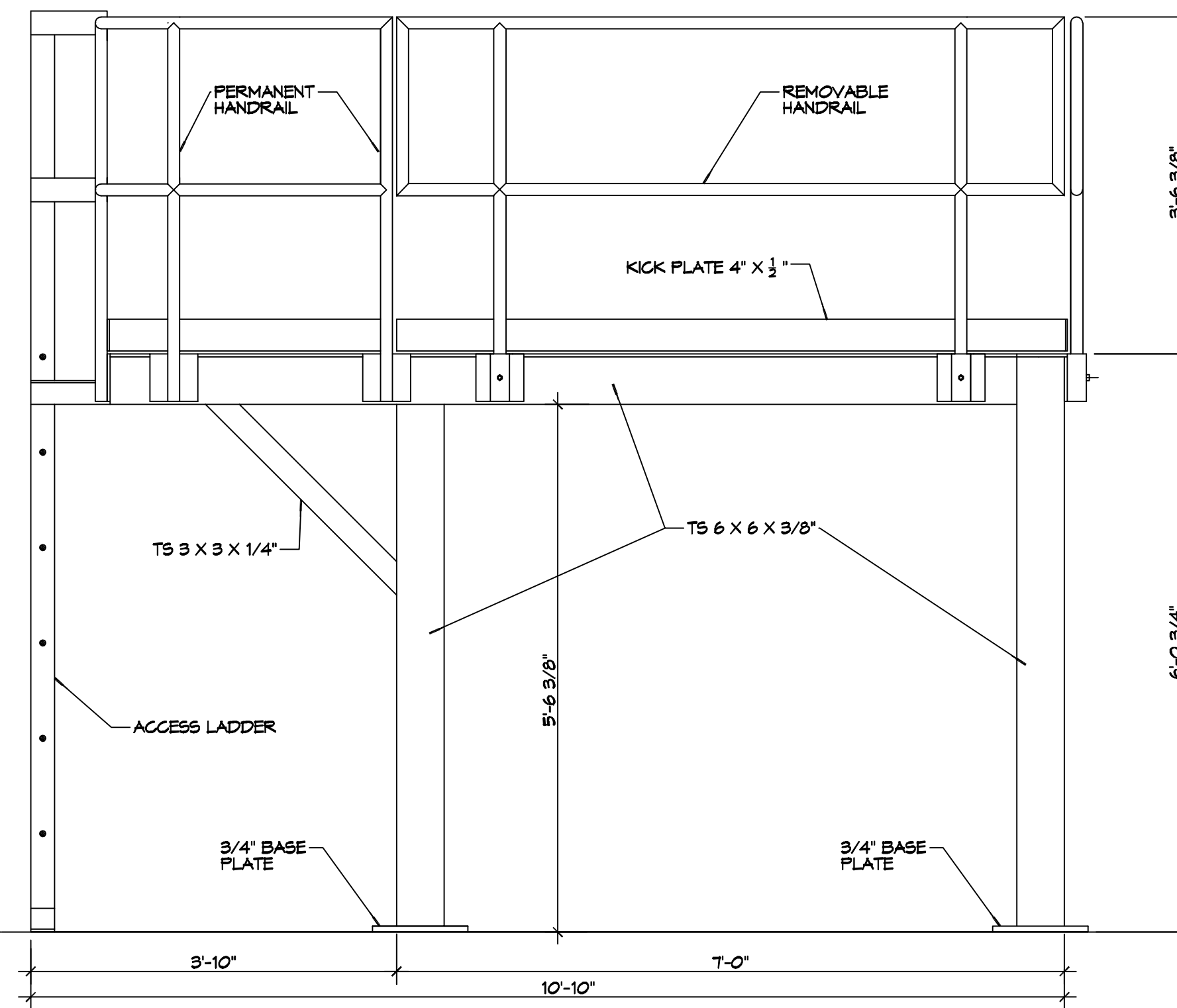
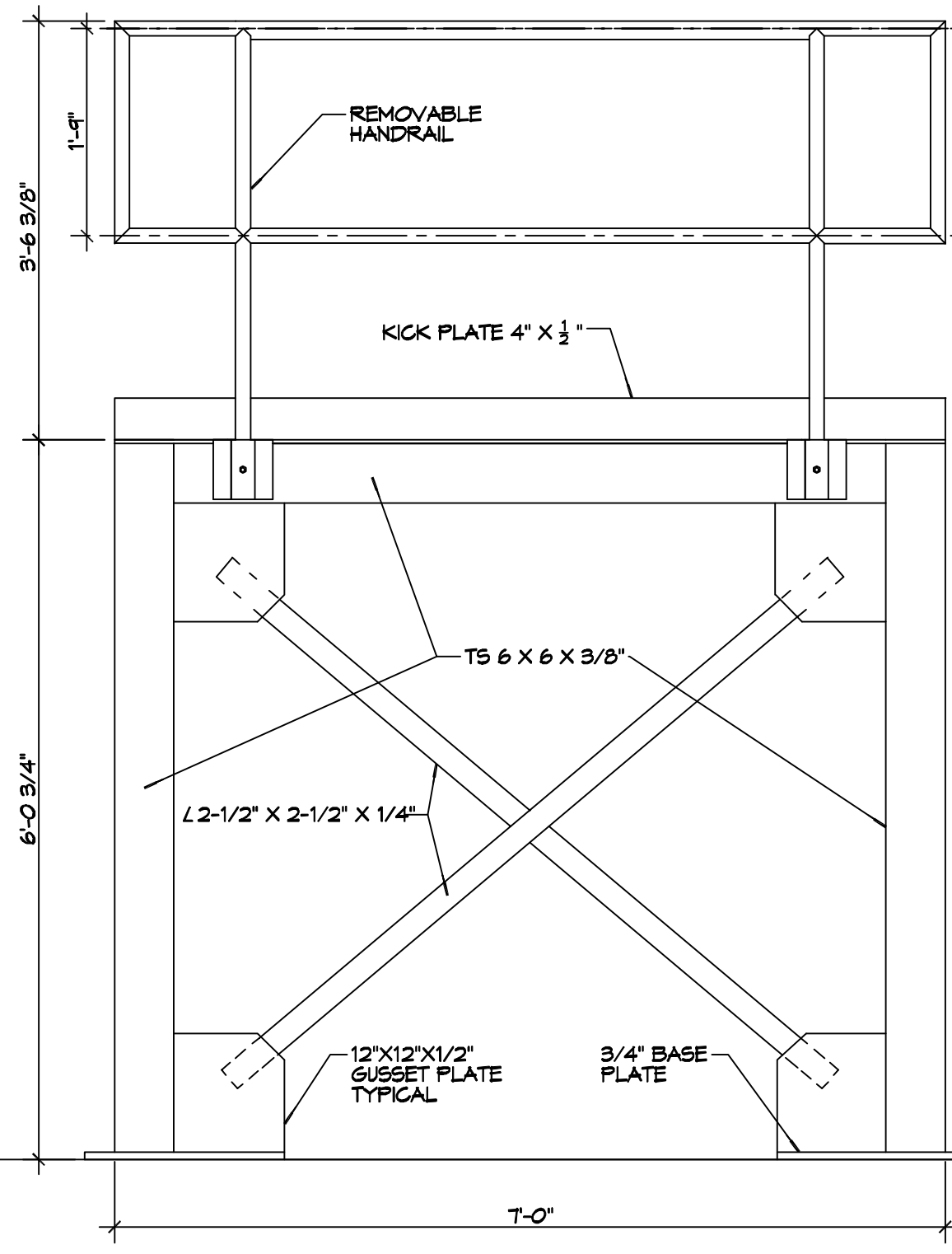


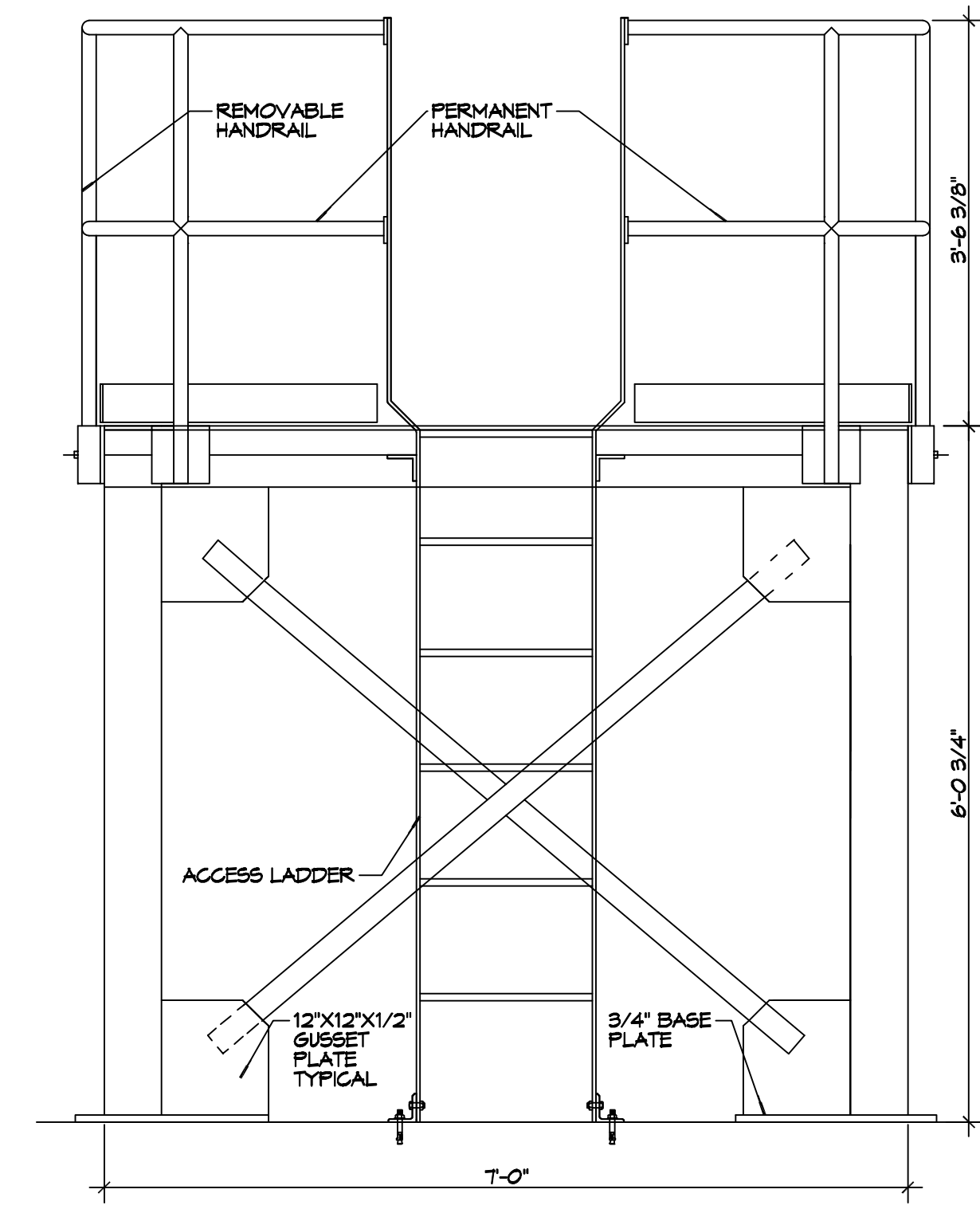
1 FRONT VIEW
SCALE: 3/4"=1'-0"



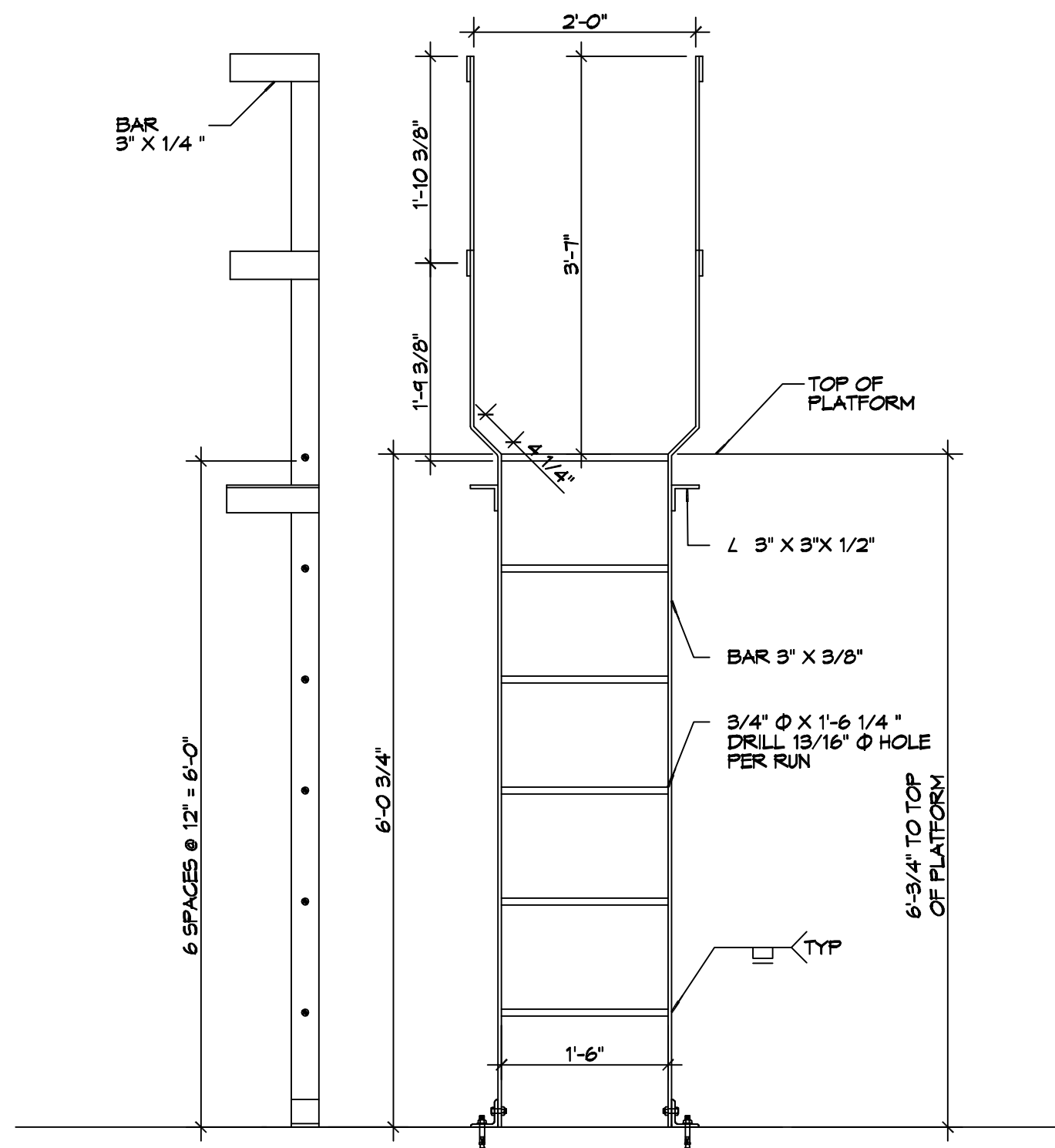
2 REAR VIEW
SCALE: 3/4"=1'-0"



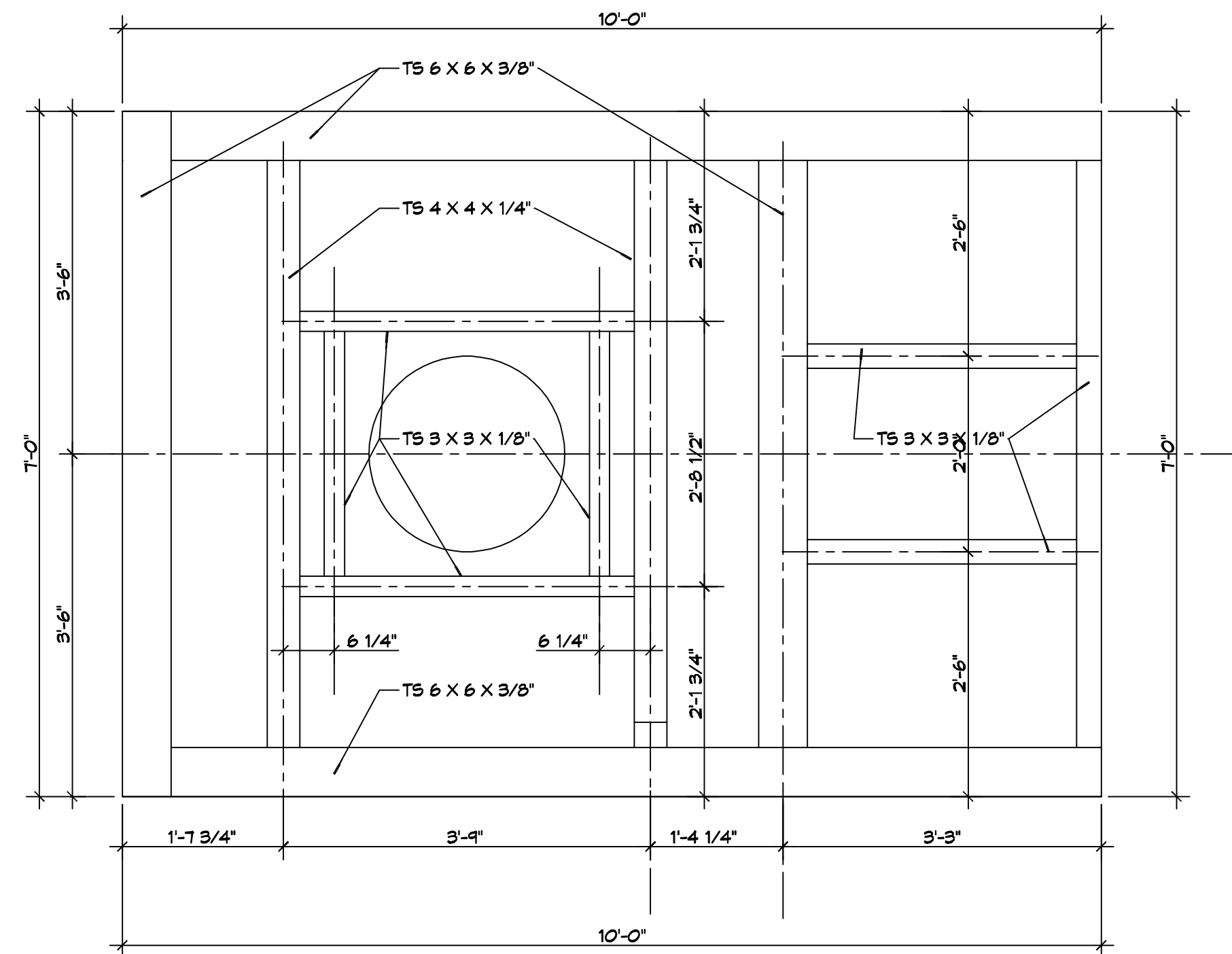
3 LEFT SIDE VIEW
SCALE: 3/4"=1'-0"



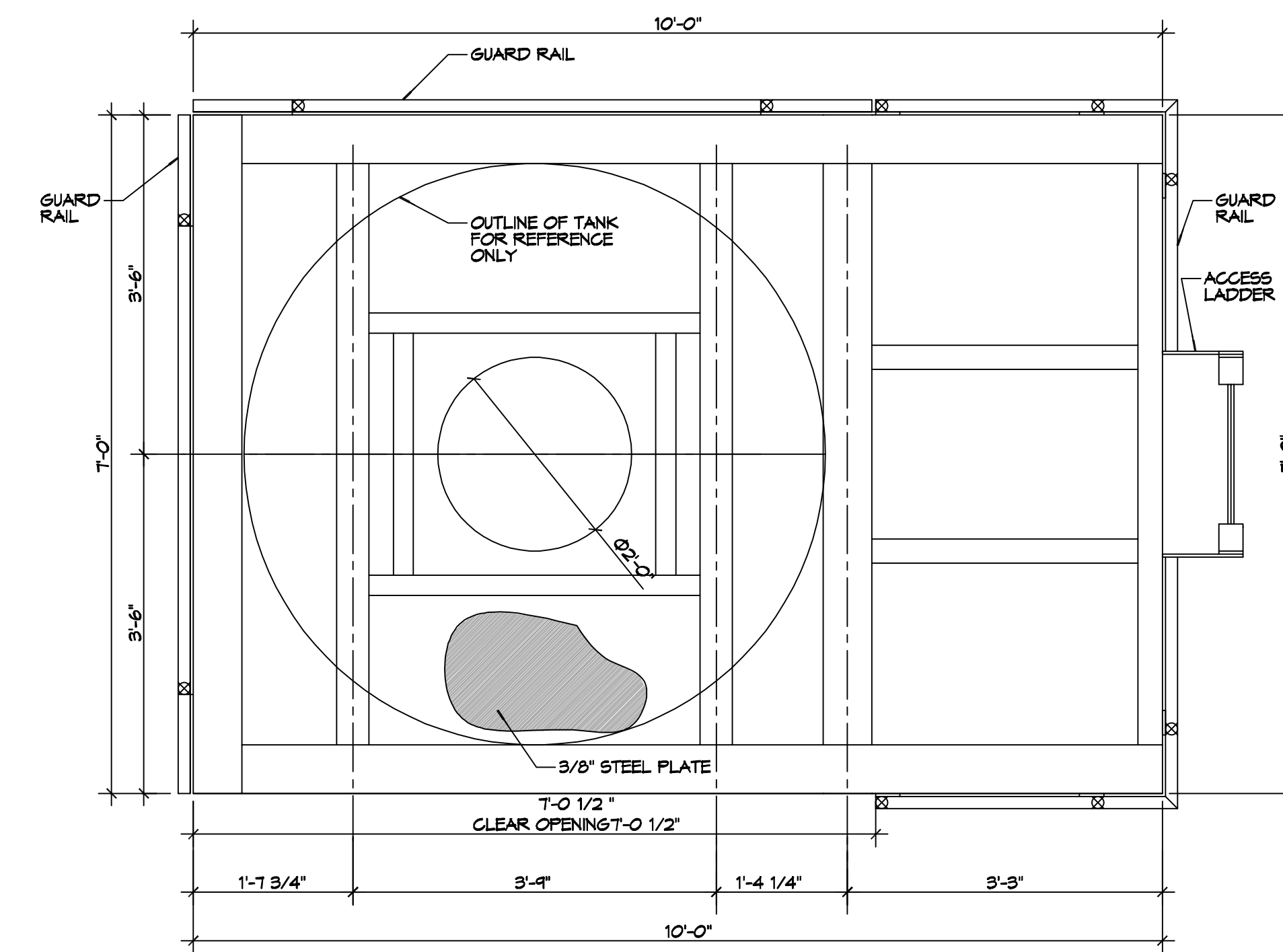
4 RIGHT SIDE VIEW
SCALE: 3/4"=1'-0"



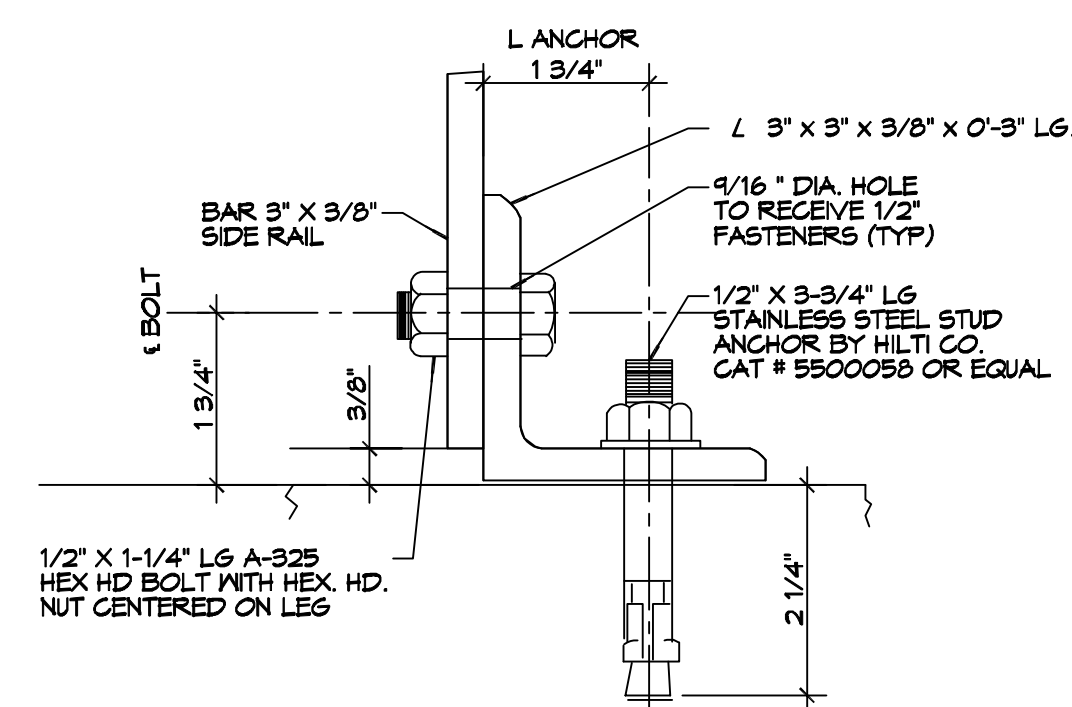
5 LADDER DETAIL
SCALE: 3/4"=1'-0"



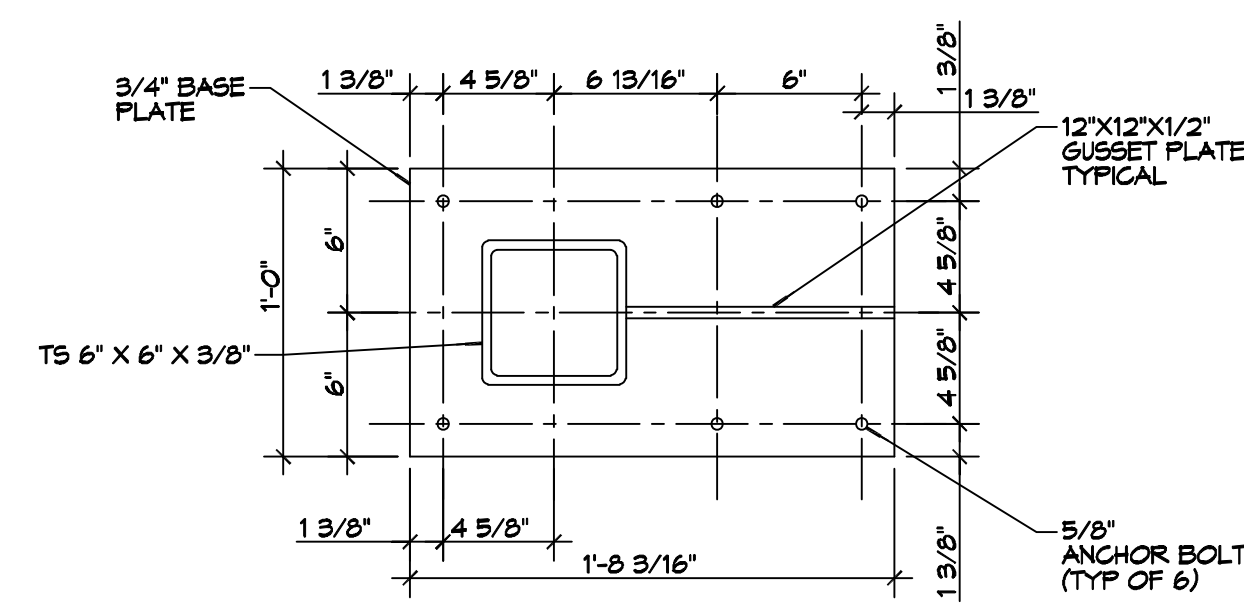
7 PLAN VIEW WITHOUT RAILINGS
SCALE: 3/4"=1'-0"



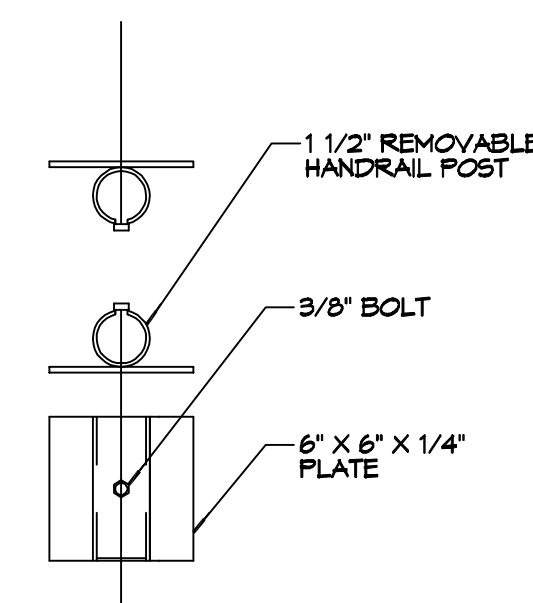
8 PLAN VIEW WITH RAILINGS
SCALE: 3/4"=1'-0"



9 LADDER BASE PLATE DETAIL
SCALE: N.T.S.



10 BASE PLATE DETAIL
SCALE: 1-1/2"=1'-0"



11 REMOVEABLE RAILING PLATE
SCALE: 1-1/2"=1'-0"

GENERAL NOTES

- ALL STEEL SHALL BE WELDED, DETAIL, FABRICATE, AND ERECT STRUCTURAL STEEL IN ACCORDANCE WITH LATEST AISC SPECIFICATIONS FOR THE DESIGN, FABRICATION AND ERECTION OF STRUCTURAL STEEL FOR BUILDINGS.
- MATERIAL
 - STRUCTURAL SHAPES, PLATES - ASTM A572
 - TUBE COLUMNS - ASTM A500 - GRADE B-FY-46 KSI
 - BOLTS: CONNECTIONS ASTM A307
 - WELDING ELECTRODES: E70XX SERIES
 - PAINT: APPROVED PRIMER - 2 MILS THICK. DO NOT PAINT SURFACES TO BE WELDED, EMBEDDED IN CONCRETE OR MASONRY, OR CONTACT SURFACES OF FRICTION CONNECTIONS
 - SHOP CONNECTIONS: WELDED UNLESS OTHERWISE NOTED.
 - WELDING BY CERTIFIED WELDERS AND IN ACCORDANCE WITH AWS D.1.1-94, STRUCTURAL WELDING CODE.
 - ELECTRODES USED FOR SUBMERGED ARC AND SHIELDED METAL ARC WELDING SHALL BE COMPATIBLE WITH THE STRUCTURAL STEEL AS SPECIFIED IN AWS AND AISC.
 - PROVIDE FRAMED BEAM CONNECTIONS AS PER AISC MANUAL, PART 4; SIZED FROM ALLOWABLE LOAD TABLES PART 2 OR AS DETAILED ON THE DESIGN DRAWINGS.

REVISIONS	DATE
#	DESCRIPTION

SEAL:

NEW PLATFORM
C M P C O A T I N G S

1610 ENGINEERS ROAD
BELLE CHASSE, LA 70007
JOB No: 2021
DATE: 09-25-2021
DRAWN BY: BAW
CHECKED BY: CKD

SHEET TITLE:
ELEVATED PAINT PLATFORM

DRAWING NUMBER:
S100