

GENERAL NOTES

- A. ALL LOW VOLTAGE PHONE & COMMUNICATION LINES PULLED BY OWNER.
- B. ALL OUTLET ELEVATIONS ARE MINIMUM 18" A.F.F. AT CENTERLINE OF DEVICE, U.O.N.
- C. ALL CONDUITS FOR THE CASHIER COUNTER RECEPTACLES AND OTHER ELECTRICAL CONNECTIONS SHALL BE ROUGHED IN AT THE DEAD CORNERS OF THE MILLWORK SHOWN.
- D. ALL CASHIER COUNTER RECEPTACLES AND ELECTRICAL CONNECTIONS SHALL BE COMPLETED AFTER THE MILLWORK CABINETS HAVE BEEN INSTALLED.
- E. REFER TO SHEET E401 FOR ADDITIONAL POWER NOTES.

KEYNOTES

- 26.402 RECEPTACLE & DATA PORTS RECESSED IN WALL FOR MONITORS. USE AN ARLINGTON INDUSTRIES RECESSED DOUBLE GANG ELECTRICAL BOX (TVBS505) TO MOUNT STANDARD DUPLEX RECEPTACLE, DATA PORTS, AND WALL PLATE AT HEIGHT INDICATED.
- 26.409 RECEPTACLE RECESSED IN WALL FOR PAPER TOWEL DISPENSER. USE AN ARLINGTON INDUSTRIES RECESSED ELECTRICAL BOX (DVFRTW) TO MOUNT STANDARD RECEPTACLE AND WALL PLATE AT HEIGHT INDICATED. BOX SHALL BE CENTERED ON PAPER TOWEL DISPENSER. REF ARCHITECTURAL FOR HORIZONTAL ROUGH-IN DIMENSIONS.
- 26.414 INSTALL LOW VOLTAGE SINGLE STATION SMOKE DETECTORS IN CEILING. SMOKE DETECTORS TO BE POWERED FROM FIRE ALARM CONTROL PANEL. REFERENCE SPECIFICATIONS SECTION 284000 FOR MORE INFORMATION.
- 26.418 ALL 120V ELECTRICAL POWER TO CAR OR TRUCK CASHIER AREAS MILLWORK SHALL ENTER FROM AN 8" X 8" SURFACE-MOUNTED JUNCTION BOX AT 24" AFF. HOLD TIGHT TO EXTERIOR WALL, OR THROUGH FLOOR AS INDICATED ON PLAN.
- 26.419 CASH REGISTER & CPU SHALL HAVE QUAD RECEPTACLES ON DEDICATED CIRCUIT WITH ISOLATED GROUND. STUB UP CONDUITS AT FUEL DESK IN THE DEAD CORNER OF MILLWORK CABINETS. LOCATE RECEPTACLE UNDER FIXED SHELF OF MILLWORK. LOCATE AFTER MILLWORK CABINETS HAVE BEEN INSTALLED. FIELD VERIFY FINAL LOCATIONS PRIOR TO ROUGH-INS.
- 26.420 PROVIDE J-BOX SET HORIZONTALLY AT 60" AFF. WITH 1/2" CONDUIT TO ATTIC WITH CONTINUATION TO ELEC. ROOM, FOR E.S.O. CONNECTION. FUEL CONTRACTOR SHALL PROVIDE WIRING AND MAKE FINAL CONNECTION.
- 27.401 CONNECT DOOR HOLDERS TO FIRE ALARM CONTROL PANEL. DOOR HOLDERS SHALL BE LISTED FOR 24V AND SUPPLIED WITH DOOR HARDWARE PACKAGE.

HFA
 HARRISON FRENCH
 & ASSOCIATES, LTD.
 t 479.273.7780
 1705 S. Walton Blvd., Suite 3
 Bentonville, Arkansas 72712
 www.hfa-ac.com

STIPULATION FOR REUSE
 THE DRAWINGS ARE PREPARED FOR
 USE ON A SPECIFIC SITE AT
 THE LOCATION AND DATE INDICATED.
 CONTEMPORANEOUSLY WITH ITS ISSUE
 DATE. THESE DRAWINGS ARE NOT
 SUITABLE FOR USE ON A DIFFERENT
 PROJECT, SITE OR AT A LATER TIME
 WITHOUT THE WRITTEN CONSENT OF
 HFA. ANY REUSE OF THESE DRAWINGS
 OR SAMPLES ON ANOTHER PROJECT
 WITHOUT THE WRITTEN CONSENT OF
 HFA IS STRICTLY PROHIBITED.
 LICENSED ARCHITECTS AND ENGINEERS
 REUSE OF ANY OTHER PROJECT IS NOT
 PERMITTED.
 THE LAW

Loves
 STORE NUMBER: 860
 I-59, EXIT 1
 NICHOLSON, MS 39466
 JOB NUMBER: 03-23-30009
 TIER 1 180

ISSUE BLOCK

NO.	DATE	DESCRIPTION

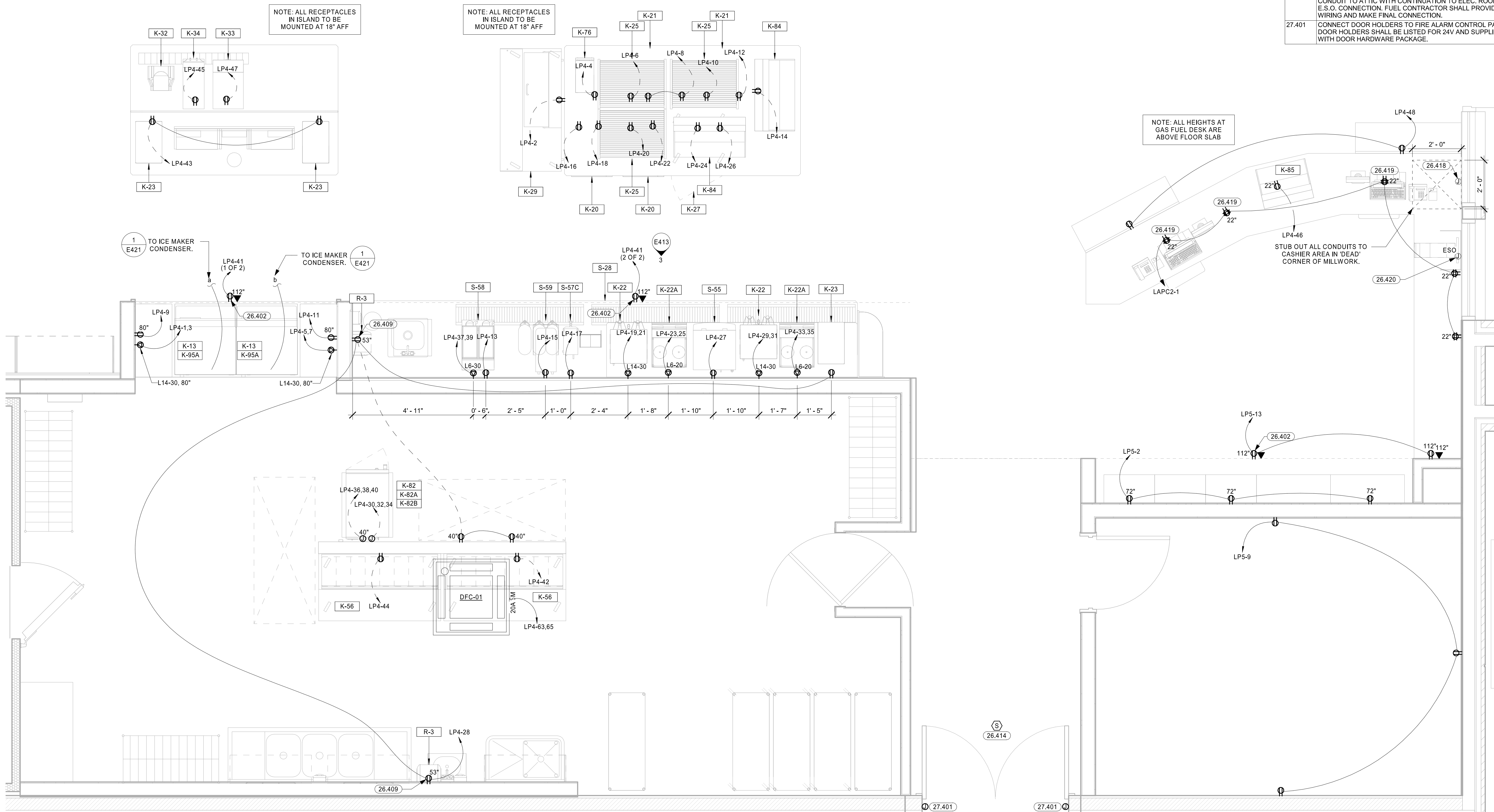
CHECKED BY: CAR
 DRAWN BY: SED
 DOCUMENT DATE: 2/7/2023
 PROTO: TIER 1 180
 PROTO CYCLE: Q4 - 2022



2023.02.07 14:23:00-06'00'

ENLARGED
 POWER PLANS

SHEET:
E411



NOTE: ALL RECEPTACLES
 IN ISLAND TO BE
 MOUNTED AT 18" AFF

NOTE: ALL RECEPTACLES
 IN ISLAND TO BE
 MOUNTED AT 18" AFF

NOTE: ALL HEIGHTS AT
 GAS FUEL DESK ARE
 ABOVE FLOOR SLAB

**ENLARGED DRINK CENTER / CASHIER
 POWER PLAN**

1
 1/2" = 1'-0"

01/20/23 11:46:30 AM
 C:\Users\jfrancis\OneDrive\Documents\2023 River Project\Love's_Architecton_MIS_AEP7_T2_180_L01_HFA_Scan_Desktop.rvt
 45554411-ENLARGED POWER PLANS