

STIPULATION FOR REUSE  
 THE DRAWINGS ARE PREPARED FOR  
 USE ON A SPECIFIC SITE AT  
 CONTINGENT UPON THE ISSUANCE  
 OF A PERMIT BY THE LOCAL  
 GOVERNMENT. THE DRAWINGS ARE  
 NOT TO BE REUSED FOR ANY OTHER  
 PROJECT, SITE OR AT A LATER TIME  
 WITHOUT THE WRITTEN CONSENT OF  
 HARRISON FRENCH & ASSOCIATES,  
 PLLC. ANY REUSE OF THESE  
 DRAWINGS WITHOUT THE WRITTEN  
 CONSENT OF HARRISON FRENCH &  
 ASSOCIATES, PLLC IS PROHIBITED.  
 THE USER OF THESE DRAWINGS  
 RELEASES HARRISON FRENCH &  
 ASSOCIATES, PLLC FROM LIABILITY  
 FOR ANY AND ALL DAMAGES, COSTS  
 AND EXPENSES THAT MAY BE  
 INCURRED BY THE USER.

**Loves**  
 STORE NUMBER: 860  
 I-59, EXIT 1  
 NICHOLSON, MS 39466  
 JOB NUMBER: 03-23-30009  
 SPEEDCO\_4\_BAY

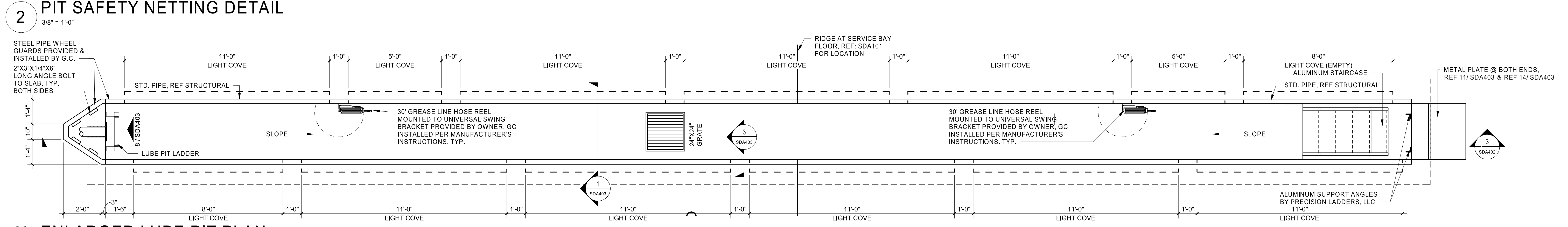
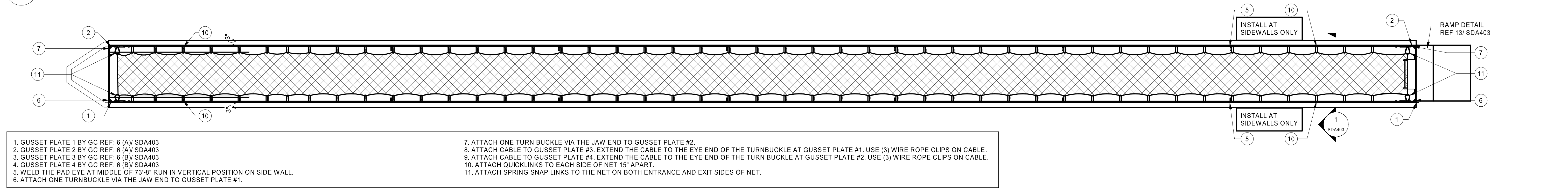
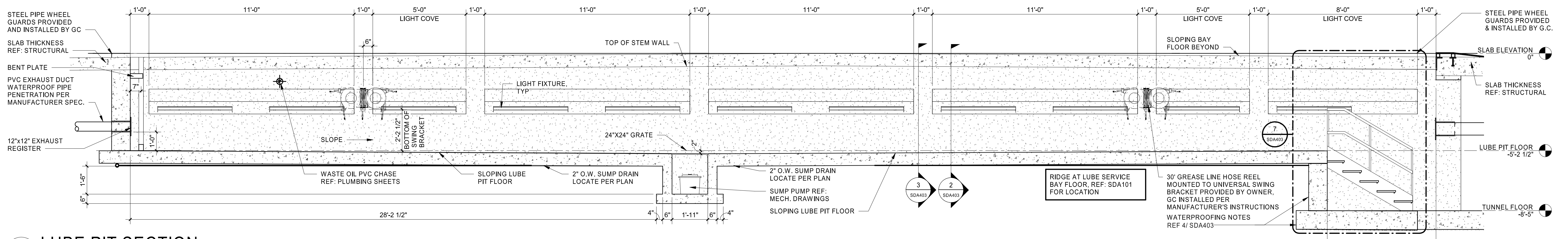
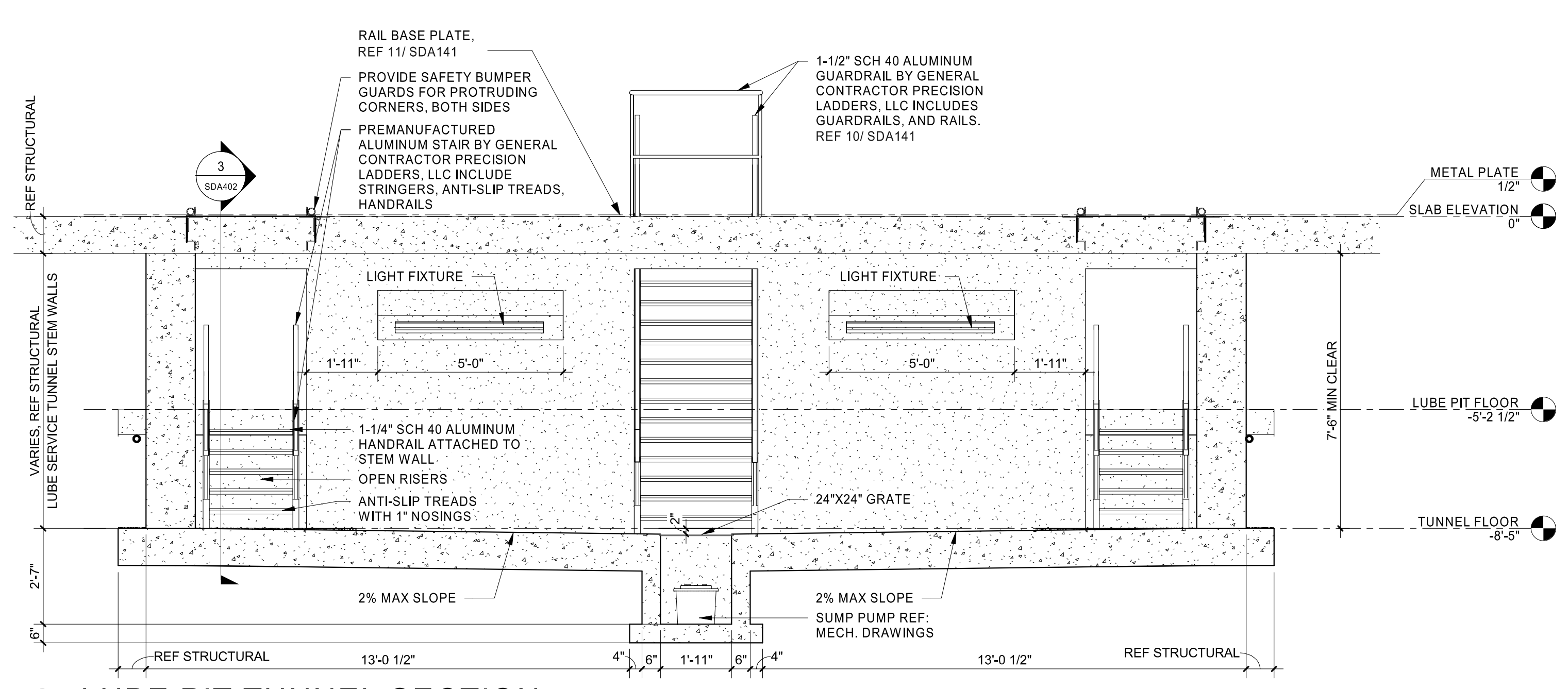
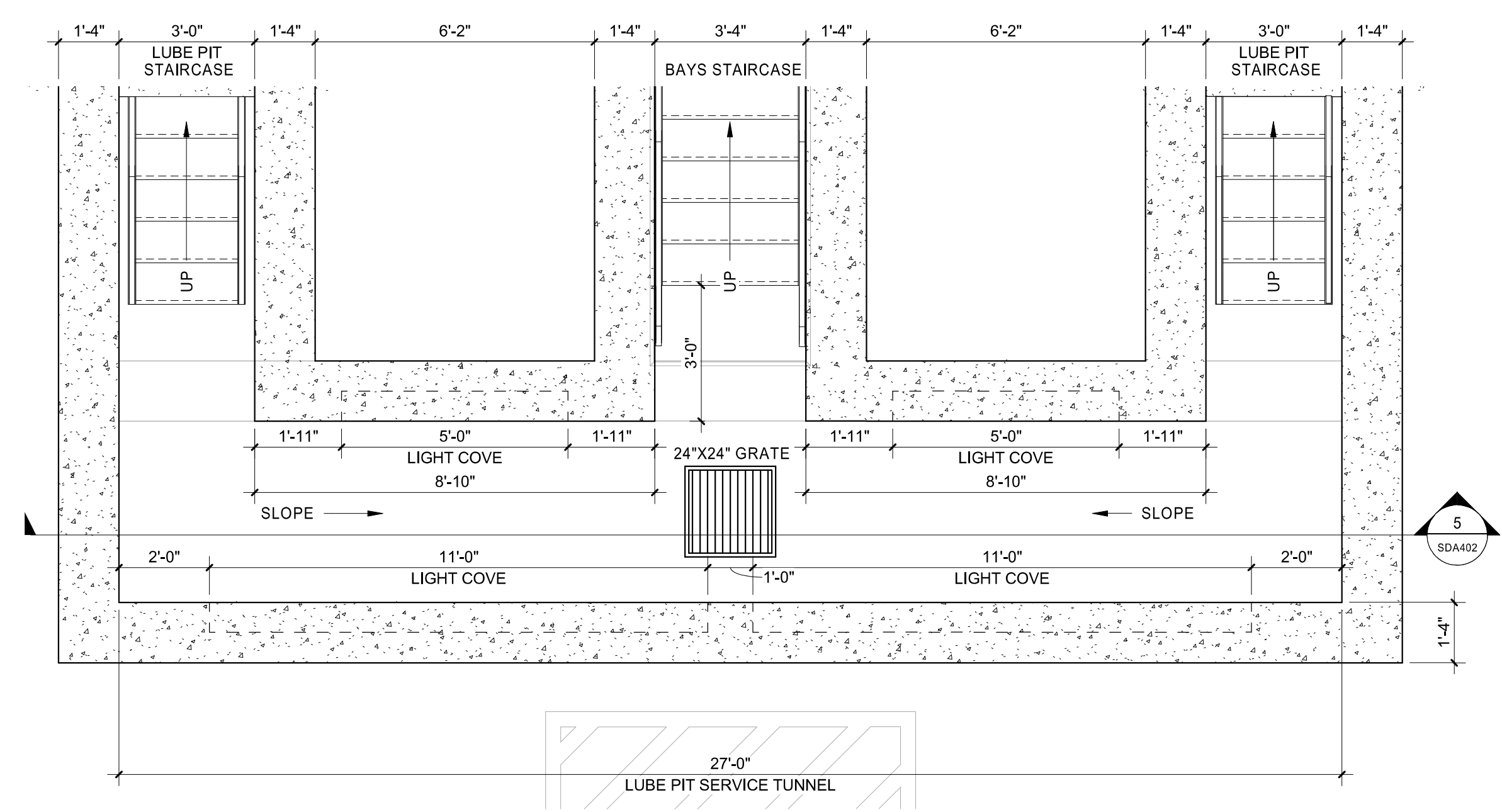
ISSUE BLOCK


CHECKED BY: MAP  
 DRAWN BY: ASE  
 DOCUMENT DATE: 02/06/23  
 PROTO: SPEEDCO\_4 BAY  
 PROTO CYCLE: Q4 - 2022

REGISTERED ARCHITECT  
 BOGUE L. EBBRECHT  
 4925  
 STATE OF MISSISSIPPI  
 Bogue Louis Ebbrecht  
 1587 53-0607

LUBE PIT PLAN & SECTIONS

SHEET:  
**SDA402**



- GUSSET PLATE 1 BY GC REF: 6 (A) SDA403
- GUSSET PLATE 2 BY GC REF: 6 (A) SDA403
- GUSSET PLATE 3 BY GC REF: 6 (B) SDA403
- GUSSET PLATE 4 BY GC REF: 6 (B) SDA403
- WELD THE PAD EYE AT MIDDLE OF 73'-8" RUN IN VERTICAL POSITION ON SIDE WALL.
- ATTACH ONE TURNBUCKLE VIA THE JAW END TO GUSSET PLATE #1.
- ATTACH ONE TURNBUCKLE VIA THE JAW END TO GUSSET PLATE #2.
- ATTACH CABLE TO GUSSET PLATE #3. EXTEND THE CABLE TO THE EYE END OF THE TURNBUCKLE AT GUSSET PLATE #1. USE (3) WIRE ROPE CLIPS ON CABLE.
- ATTACH CABLE TO GUSSET PLATE #4. EXTEND THE CABLE TO THE EYE END OF THE TURNBUCKLE AT GUSSET PLATE #2. USE (3) WIRE ROPE CLIPS ON CABLE.
- ATTACH QUICKLINKS TO EACH SIDE OF NET 15" APART.
- ATTACH SPRING SNAP LINKS TO THE NET ON BOTH ENTRANCE AND EXIT SIDES OF NET.

S:\Projects\2023\0227\_Plan\_Proposal\Drawings\MS\_ARCH\_SPEEDCO\_4BAY\_HFA\MS\_ARCH\_SPEEDCO\_4BAY\_HFA.dwg  
 02/06/23 10:17:10 AM  
 C:\Users\mfrank\OneDrive\Documents\2023\Plan\_Proposal\Drawings\MS\_ARCH\_SPEEDCO\_4BAY\_HFA\MS\_ARCH\_SPEEDCO\_4BAY\_HFA.dwg  
 02/06/23 10:17:10 AM  
 03/03/2023 LUBE PIT PLAN & SECTIONS