

STIPULATION FOR REUSE
 THESE DRAWINGS ARE PREPARED FOR
 USE ON A SPECIFIC PROJECT AT
 THE LOCATION AND DATE INDICATED
 HEREON. ANY REUSE OF THESE
 DRAWINGS FOR ANY OTHER
 PROJECT, SITE OR DATE WITHOUT THE
 WRITTEN CONSENT OF HARRISON
 FRENCH & ASSOCIATES, LTD. IS
 STRICTLY PROHIBITED. ANY
 UNAUTHORIZED REUSE OF THESE
 DRAWINGS IS AT THE USER'S
 SOLE RISK AND MAY BE CONSIDERED
 A VIOLATION OF THE LAW.

Love's
 STORE NUMBER: 860
 I-59, EXIT 1
 NICHOLSON, MS 39466
 JOB NUMBER: 03-23-30009

ISSUE BLOCK

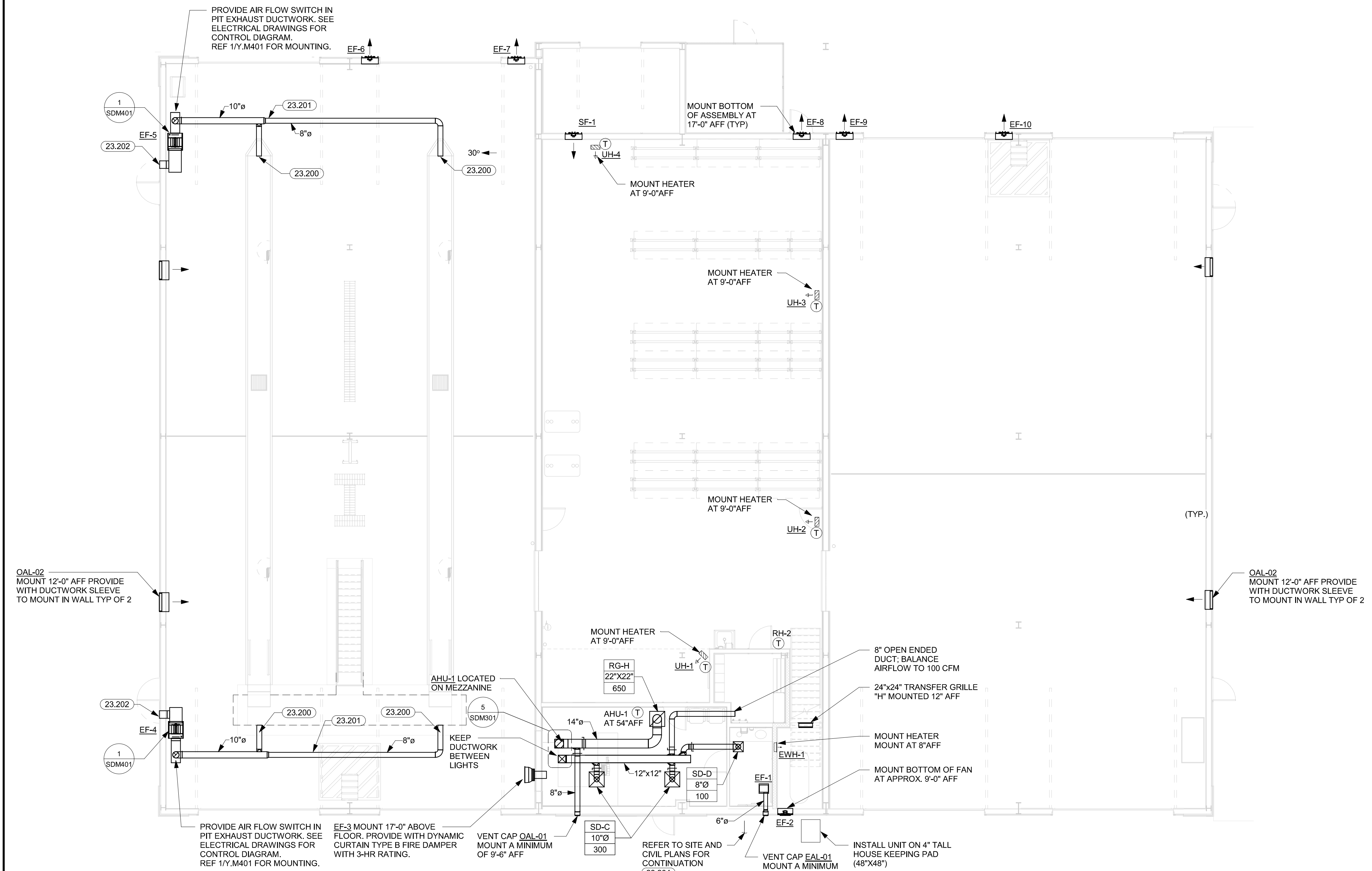
CHECKED BY: JKR
 DRAWN BY: PRC
 DOCUMENT DATE: 2/7/2023
 PROTO: SPEEDCO_4 BAY
 PROTO CYCLE: Q4 - 2022



2023.02.07 13:35:05-06'00"

HVAC PLAN
 SHEET:
SDM101

MECHANICAL SYMBOLS		GENERAL NOTES	
	RECTANGULAR DUCT 18" WIDE BY 12" DEEP	1.	ALL MECHANICAL HVAC AND PLUMBING WORK SHALL BE PERFORMED IN STRICT ACCORDANCE WITH THE BASE BUILDING SPECIFICATION AND WITH THE LATEST EDITION OF THE PREVAILING STATE MECHANICAL, PLUMBING AND BUILDING CODES AS WELL AS ALL REGULATIONS THAT MAY APPLY. IN CASE OF CONFLICT BETWEEN THE CONTRACT DOCUMENTS AND A GOVERNING CODE OR ORDINANCE THE MORE STRINGENT STANDARD SHALL APPLY.
	12" DIAMETER ROUND DUCT	2.	COORDINATE EXACT LOCATIONS OF AIR DISTRIBUTION DEVICES WITH CEILING AND LIGHT FIXTURE LAYOUT - VERIFY WITH THE ARCHITECT.
	SUPPLY DUCT IN SECTION	3.	ALL RECTANGULAR SUPPLY DUCTS ELBOWS SHALL HAVE SINGLE THICKNESS TURNING VANES.
	RETURN OR EXHAUST DUCT IN SECTION	4.	ALL AIR CONDITIONING DUCTWORK SHALL BE SMACNA 1" PRESSURE CLASSIFICATION WITH SEAL CLASS 'A.'
	ELBOW WITH TURNING VANES	5.	DUCT SIZES SHOWN ARE ACTUAL INSIDE CLEAR DIMENSIONS. SHEET METAL CONTRACTORS SHALL INCREASE SIZES FOR DUCTWORK REQUIRED TO BE LINED TO ALLOW FOR 1-INCH THICK LINER EQUIVALENT TO KNAUF TYPE "EM" - MINIMUM R-VALUE 4.2.
	ROUND (OR OVAL) ELBOW	6.	COORDINATE ROUTING OF DUCTWORK WITHIN STRUCTURE WITH THE LOCATION OF COLUMNS, JOIST AND BEAMS.
	SUPPLY AIR DIFFUSER WITH ROUND SUPPLY DUCT	7.	ALL ROUND AIR CONDITIONING DUCTWORK SHALL HAVE 2-INCH THICK EXTERIOR DUCT WRAP CONSISTING OF A FIBERGLASS BLANKET WITH FACTORY APPLIED VAPOR BARRIER FACING AND HAVING A MINIMUM R-VALUE OF 5.6, UNLESS NOTED OTHERWISE.
	RETURN OR EXHAUST AIR DIFFUSER WITH ROUND DUCT	8.	IT IS THE INTENT TO HAVE ALL AIR SYSTEMS INCLUDING KITCHEN EXHAUST AND MAKE-UP AIR BALANCED BY AN INDEPENDENT TAB CERTIFIED NEBB CONTRACTOR. AIR QUANTITIES IN MAIN DUCT SHALL BE MEASURED BY PITOT TUBE TRAVERSES. OUTLET AND INLET AIR QUANTITIES SHALL BE DETERMINED IN ACCORDANCE WITH NEBB PROCEDURES. THE NEBB TAB FIRM SHALL PROVIDE A CERTIFICATE OF CONFORMANCE CERTIFICATION TO THE OWNER.
	DIFFUSER OR GRILLE TYPE BRANCH DUCT & NECK SIZE CFM	9.	UNLESS DIMENSIONED, THE WORK SHOWN ON THE CONTRACT DRAWINGS IS DIAGRAMMATIC. ILLUSTRATING THE GENERAL ARRANGEMENT. CONTRACTOR SHALL ADHERE TO ARRANGEMENT SHOWN AS CLOSELY AS THE ACTUAL CONSTRUCTION WILL PERMIT.
	MANUAL BALANCE DAMPER	10.	CONTRACTOR SHALL VERIFY EXACT EQUIPMENT DIMENSIONS, CLEARANCES, AND FIELD DIMENSIONS RELATIVE TO LOCATIONS OF STRUCTURAL FRAMING. CHANGES REQUIRED IN ROUTING OR SIZES OF DUCTWORK TO MAKE WORK SHOWN CONFORM TO PROJECT REQUIREMENTS RESULTING FROM FIELD COORDINATION PROBLEMS SHALL BE IDENTIFIED, ILLUSTRATED, AND SUBMITTED TO THE ENGINEER FOR PRIOR REVIEW AND APPROVAL BEFORE INSTALLATION.
	THERMOSTAT	11.	TERMINATE EXHAUST OUTLETS AT A MINIMUM OF 10'-0" FROM ALL AIR HANDLING EQUIPMENT INTAKE VENTS.
	REMOTE TEMPERATURE SENSOR	12.	ALL ROOF PENETRATIONS THRU ROOF SHALL BE SEALED WATERWEATHER TIGHT.
	HUMIDISTAT AND SENSOR	13.	LOCATE ROOFTOP HVAC EQUIPMENT A MINIMUM OF 10'-0" FROM EDGE OF ROOF. PROVIDE GUARD RAIL FOR EQUIPMENT ON ROOF PER LOCAL CODE IF APPLICABLE.
	ALARM ANNUNCIATOR	14.	SLEEVE REFRIGERANT LINES THROUGH EXTERIOR WALL AND SEAL WITH MINERAL WOOL AND CAULKING.
	DUCT SMOKE DETECTOR	15.	TIRE STORAGE HEATER THERMOSTATS SHALL BE SET AT 60°F MINIMUM.
	FIRE DAMPER WITH ACCESS DOOR	16.	GAS PIPING SHALL BE SCHEDULE 40 BLACK STEEL PIPE WITH MALLEABLE IRON FITTINGS OR WELDED. VALVES AND OTHER EQUIPMENT SHALL HAVE SCREWED JOINTS OR WELDED.
		17.	TEST ALL LOW PRESSURE GAS PIPING FOR A PERIOD OF NOT LESS THAN TWO HOURS AT A PRESSURE OF NOT LESS THAN 60 PSIG, USING SOAP AND WATER OR SIMILAR MATERIALS AT ALL JOINTS WHEN LEAK TESTING. ALL EQUIPMENT MUST BE ISOLATED FROM THE GAS PIPING SYSTEM.
		18.	PROVIDE START-UP ASSISTANCE FOR ALL GAS-FIRED EQUIPMENT. COORDINATE ADJUSTMENT OF REGULATORS WITH SET-UP PERSONNEL TO ENSURE CORRECT GAS FLOW PRESSURES FOR PROPER OPERATION OF ALL EQUIPMENT.



1 HVAC PLAN
 1/8" = 1'-0"

03/02/2023 10:31:36 AM
 C:\Users\jfrank.chriswell\Documents\2023\New\Projects\Lowell_Nicholson_MS_MEP_SPEEDCO_4B_P1_MPA_Plan\Hvac\Chiswell.rvt
 RISC:SDM101:HVAC PLAN