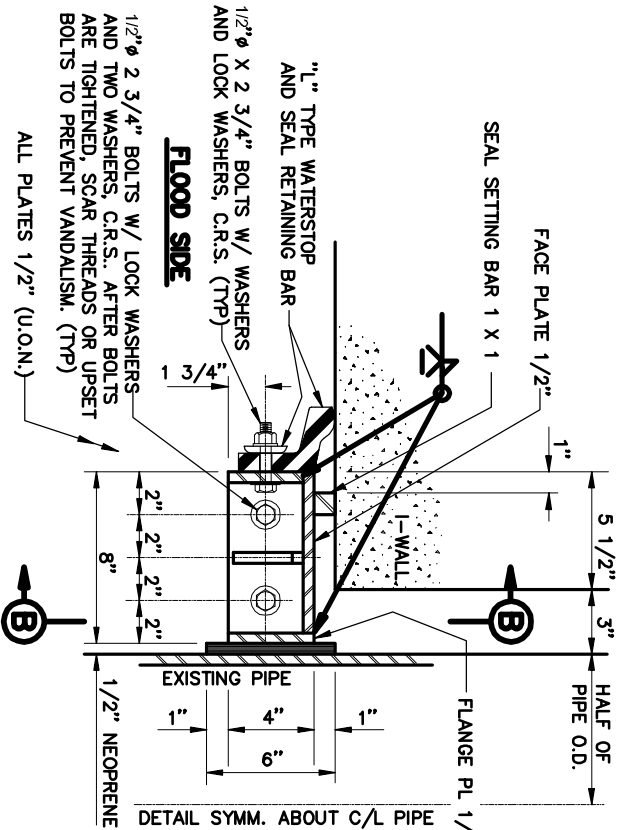
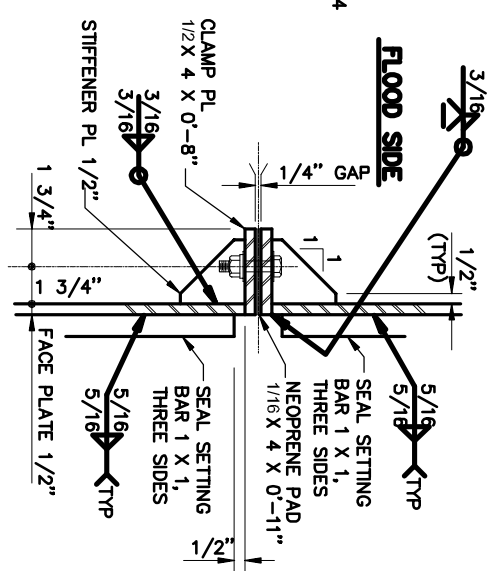


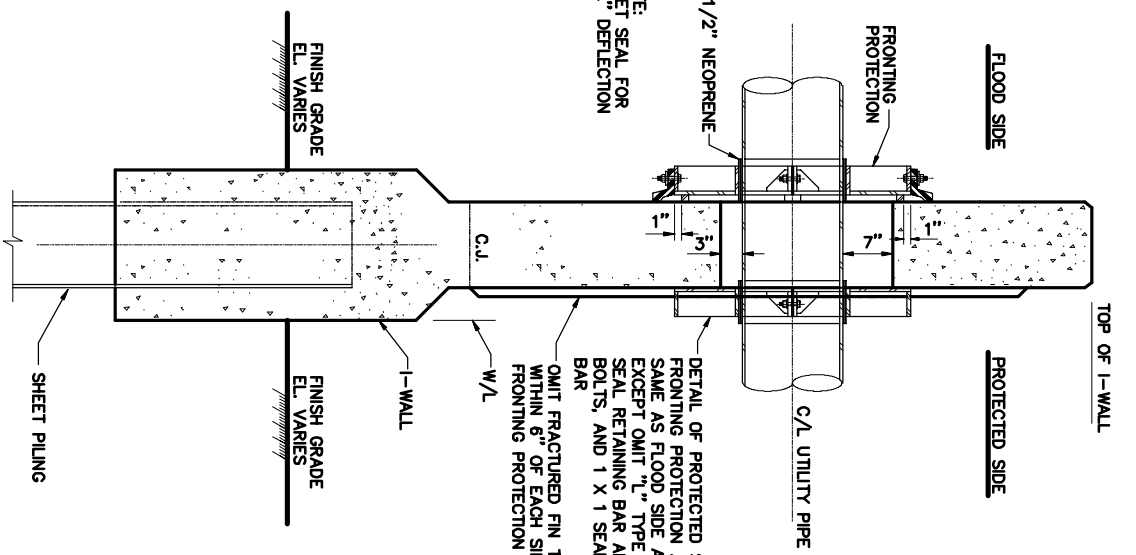
FRONTING PROTECTION UTILITY DETAIL
FLOOD SIDE ELEVATION
 SCALE: 3" = 1' - 0"



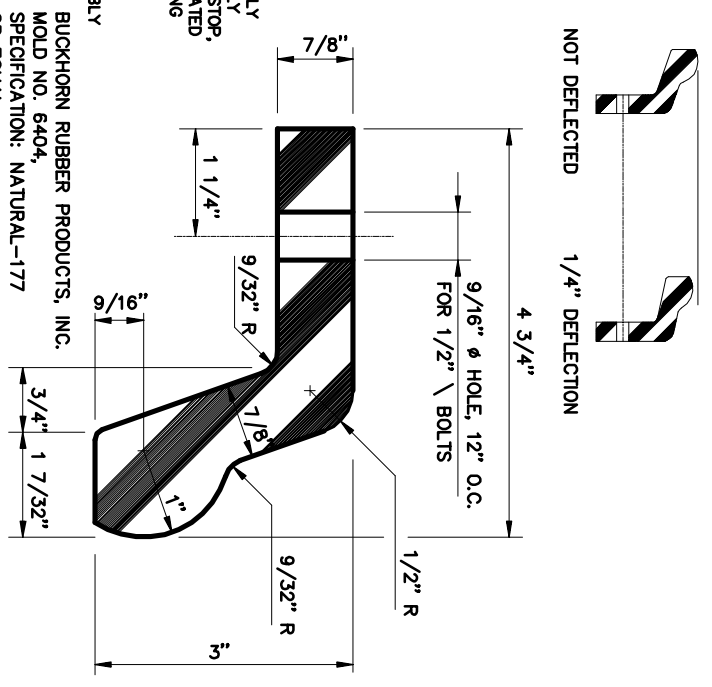
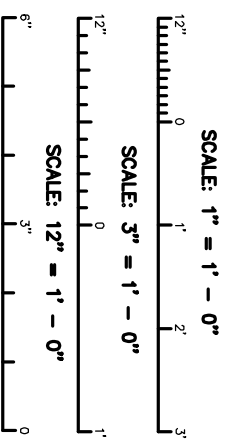
SECTION A
 SCALE: 3" = 1' - 0"



SECTION B
 SCALE: 3" = 1' - 0"



SECTION THRU FLOODWALL
 SCALE: 1" = 1' - 0"



"L" TYPE WATERSTOP
 SCALE: 12" = 1' - 0"

- NOTES:**
1. THE PORT SHIP SERVICE SEWER PIPE CROSSING (2-IN DIAMETER) IS LOCATED AT LEV. B/L STA. 457. THE WATER PIPE CROSSING (3/4-IN DIAMETER) IS LOCATED AT APPROXIMATE LEV. B/L STA. 457. LABELLED P3A & P3B.
 2. THIS DETAIL IS DRAWN FOR A 2" SEWER LINE AND A 3" WATER LINE O.D. PIPE.
 3. THIS DETAIL IS BASED ON THE NEW WALL FACE BEING PERPENDICULAR TO THE PIPE.
 4. ALL MATERIAL FOR FRONTING PROTECTION SHALL BE ALUMINIUM, UNLESS OTHERWISE NOTED.
 5. ALL STRUCTURAL ALUMINIUM PLATES SHALL BE ASTM B 209, TYPE 6061-T6.
 6. ALL CORROSION RESISTANT STEEL (C.R.S.) SHALL BE TYPE 316.
 7. WELDS SHOWN ARE TYPICAL FOR SIMILAR JOINTS AND ALL WELDS ON WALL SIDE OF FACE PLATE SHALL BE FLUSH WITH BASE METAL.
 8. AFTER THE FRAMES ARE LOOSELY CLAMPED ON THE PIPE, THE TOTAL ASSEMBLY SHALL BE PUSHED AGAINST THE WALL, SETTING THE SEALS, THEN TIGHTEN CLAMP PLATES TO CLOSE THE 1/4" GAP.
 9. UPON COMPLETION OF THE ASSEMBLY, APPLY AN ANAEROBIC ADHESIVE (LOCTITE THREADLOCKER 290 OR EQUAL) TO ALL NUT AND BOLT JUNCTIONS.
 10. THE ATV PATH AND ROAD ON EITHER SIDE OF THE WALL SHALL REMAIN CONTINUOUS OVER EACH PIPE CROSSING. THESE SHALL RAMP OVER THE PIPE AT A SLOPE OF 1V ON 10H. THE UTILITY OWNER SHALL HAVE THE RESPONSIBILITY FOR CONSTRUCTING THE CONTINUOUS RAMP OVER THE UTILITY CROSSING.

PORT SHIP SERVICE, INC. 9999 HWY 23 BELLE CHASSE, LA 70037		DAMMON ENGINEERING, INC. Architects & Engineers	
JOB No:	DATE: 09-03-2014	CHEP ENGINEER: BRIAN MISTICH, P.E.	dammoneing@bellechasse.net
DRAWN BY: BM	CHECKED BY: CKD	554 D.O. SPANISH TRAIL	PHONE: 985-649-5932
		GUIDE: A 70458	FAX: 985-641-5950

UTILITY CROSSING DETAILS
 SHEET No: C-1
 1 OF 1