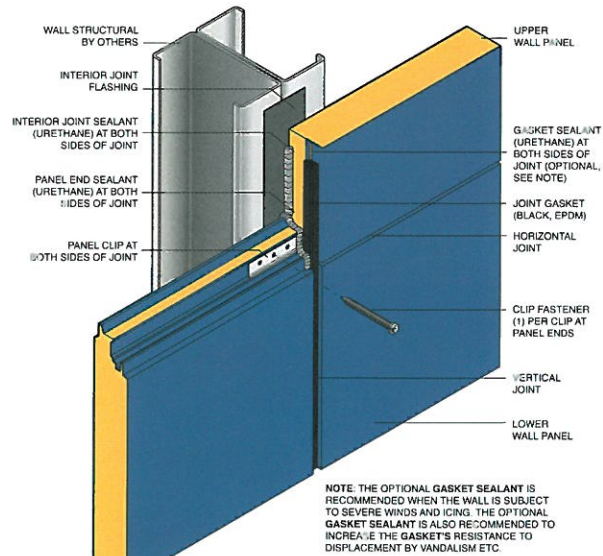
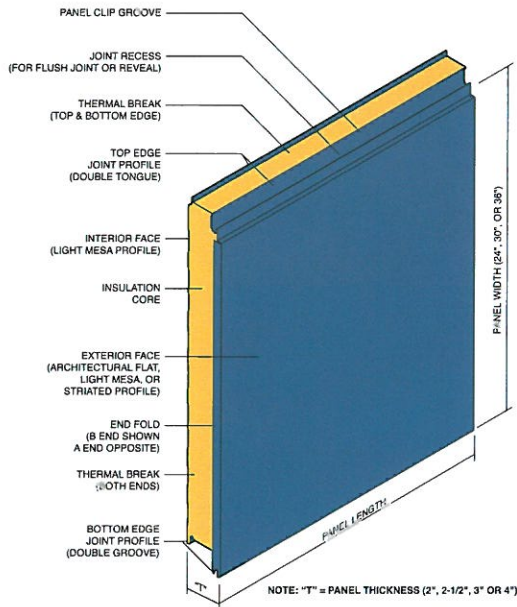


ARCHITECTURAL/HORIZONTAL INSULATED METAL WALL PANEL

METL-SPAN® INSULATED METAL PANELS



The Metl-Span® Architectural/Horizontal insulated metal wall panel is ideal for high profile horizontal applications. Designed to install with concealed clips and fasteners in the side joint, Architectural/Horizontal wall panels provide maximum design flexibility and a beautiful high-tech appearance. The horizontal interlocking joint can be varied for visual impact. It may be ordered flush or with a $\frac{3}{8}$ " deep reveal of $\frac{1}{4}$ ", $\frac{1}{2}$ ", $\frac{3}{4}$ ", 1", 1 $\frac{1}{2}$ ", 2", 2 $\frac{1}{2}$ ", or 3" width. The panel ends are folded to eliminate the need for metal trim at the vertical butt joint. The joint is sealed with a black dry gasket to create a shadowline effect that can be emulated in the horizontal reveal.



ARCHITECTURAL/HORIZONTAL INSULATED METAL WALL PANEL FEATURES

Exterior Profile: Architectural flat with flush or reveal horizontal joints

Interior Profile: Light Mesa nominal $\frac{1}{16}$ " deep

Panel Core: Foamed-in-place, Non-CFC & zero ODP polyurethane, FM Class 1 approval

Thermal Values: K-factor, Btu in/ft² hr. °F @ 75°F (24°C) mean core temperature = 0.140. K-factor, Btu in/ft² hr. °F @ 40°F (4°C) mean core temperature = 0.126

Module Width: 24", 30", 36"

Reveal Width: $\frac{1}{4}$ ", $\frac{1}{2}$ ", $\frac{3}{4}$ ", 1", 1 $\frac{1}{2}$ ", 2", 2 $\frac{1}{2}$ ", 3"

Panel Thickness: 2", 2 $\frac{1}{2}$ ", 3", 4"

Panel Lengths: Standard 8'-0" to 32'-0"

Exterior Facings: Stucco embossed, G-90 galvanized and/or AZ-50 aluminum-zinc coated steel in 22 Ga.

Interior Facings: Stucco embossed, G-90 galvanized and/or AZ-50 aluminum-zinc coated steel in 26 Ga., 24 Ga. and 22 Ga.

Panel Joint: Offset double tongue and groove with extended metal shelf for positive face fastening

Fastening: Fastener and clip concealed in the side joint

FM Approved Class 1 with no height restrictions.

FINISHES & COLORS

A full range of exterior colors & coatings are available for the architectural market. For specific information about our available colors and coatings, visit us online for a comprehensive selection.

METL-SPAN: Pioneering Insulated Metal Panel Technology

1720 Lakepointe Drive, Suite #101, Lewisville, Texas 75057 • 877.585.9969 • FAX: 972.420.9382

metlspan.com • Visit our website or call us today for a free C&I Product Showcase and CAD Flash drive.

© 2013 Metl-Span - A Division of NCI Group, Inc. - All rights reserved. Printed in the U.S.A. METL-13-019-2-02