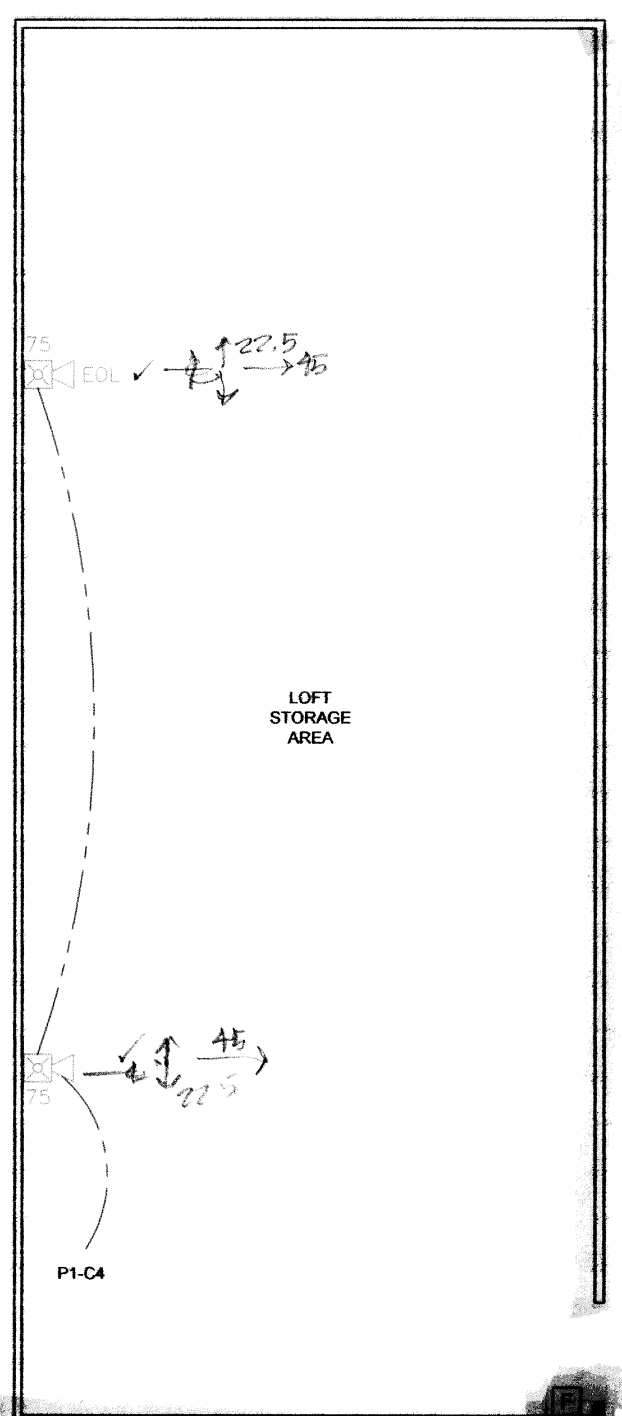
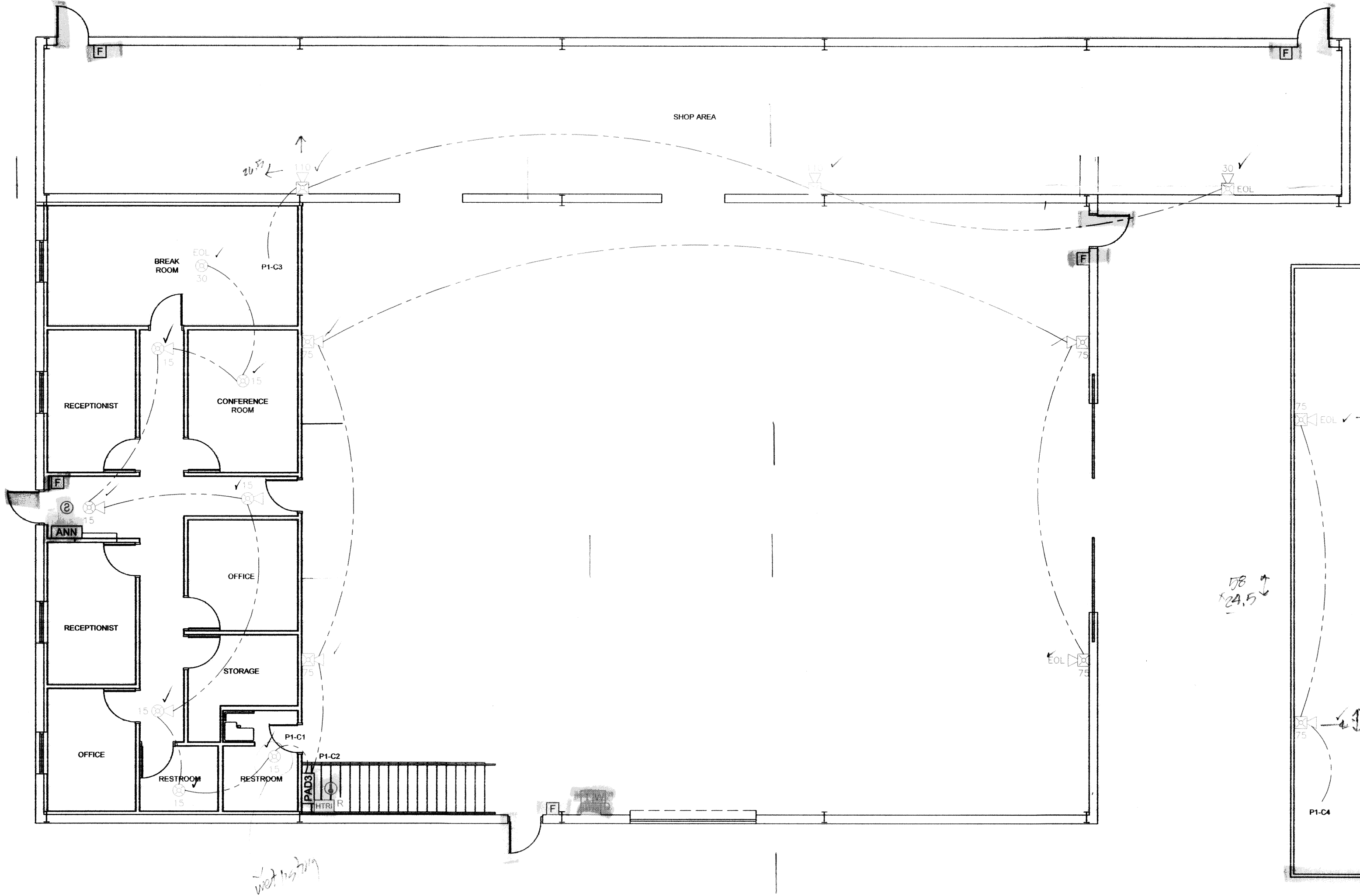


DAMMON ENGINEERING INC
 Date: 10-9-15 Project: TEXTRON
 Reviewed: _____
 Reviewed as Noted: _____
 Revise and Resubmit: _____
 Rejected: _____
 Other: _____

Corrections or comments made on the shop drawings during this review do not relieve the contractor from compliance with the requirements of the drawings and specifications. This check is only for review of the general conformance with the design concept of the project and general compliance with the information given in the contract documents. This contractor is responsible for determining and correlating all quantities and dimensions, coordinating fabrication processes and techniques of construction, coordinating his or her work with that of all other trades and performing all in a safe and satisfactory manner.

Submital Item: FIRE ALARM
 Comments: _____



CPT 250' 75" (100' if sprinklered)
 it is -> P1-C1/2/3/4

REVIEWED FOR STATE FIRE MARSHAL AS PER REVIEW LETTER BY ELLEN McFARLAND, A.R.C.
 Ellen McFarland

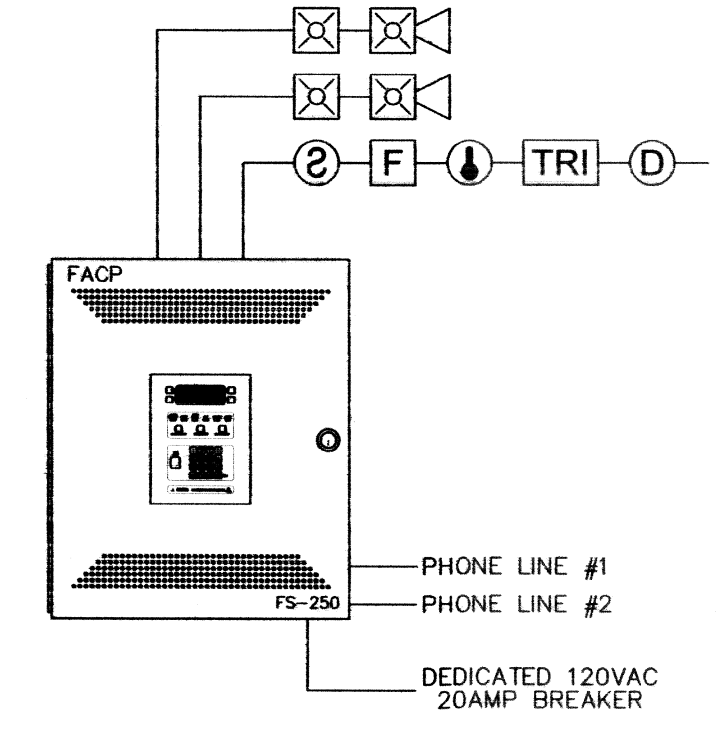
FLOORPLAN
 1/8" = 1'-0"

MEZZ
 1/8" = 1'-0"

DAMMON ENGINEERING INC
 Date: _____ Project: _____
 Reviewed: _____
 Reviewed as Noted: _____
 Revise and Resubmit: _____
 Rejected: _____
 Other: _____

Corrections or comments made on the shop drawings during this review do not relieve the contractor from compliance with the requirements of the drawings and specifications. This check is only for review of the general conformance with the design concept of the project and general compliance with the information given in the contract documents. This contractor is responsible for determining and correlating all quantities and dimensions, coordinating fabrication processes and techniques of construction, coordinating his or her work with that of all other trades and performing all in a safe and satisfactory manner.

Submital Item: _____
 Comments: _____



TYPICAL FIRE ALARM RISER

SYM	DESCRIPTION	MODEL	BACK BOX	MTG. HEIGHT
FACP	FIRE ALARM CONTROL PANEL	FC922	(SUPPLIED BY PRIORITY SYSTEMS)	66" TO TOP
EVAC	FIRE ALARM VOICE PANEL	SP-40/2	(SUPPLIED BY PRIORITY SYSTEMS)	66" TO TOP
ESD	SIGNAL EXTENDER	PAD-3	(SUPPLIED BY PRIORITY SYSTEMS)	66" TO TOP
ANN	FIRE ALARM ANNUNCIATOR PANEL	FD215-US	4" SQUARE	66" TO TOP
MF	MANUAL PULL STATION	1M5-S	SGL GANG 3 1/2" DEEP	48" A.F.F. TO CENTER
SD	SMOKE DETECTOR	OP921	4" OCTAGON	CEILING MOUNT
DR	DUCT DETECTOR W/RELAY	FD62492-HR	DUCT MOUNTED	DUCT MOUNTED
HT	HEAT DETECTOR	1H921	4" OCTAGON	CEILING MOUNT
DM	DUAL INPUT MODULE	1M5-D	4" SQUARE 2-1/8" DEEP	FIELD LOCATE
TRM	ADDRESSABLE RELAY MODULE	1TRM-R	4" SQUARE 2-1/8" DEEP	FIELD LOCATE
TRM	ADDRESSABLE SINGLE MODULE	1TRM-M	4" SQUARE 2-1/8" DEEP	FIELD LOCATE
ST	WALL MOUNTED SELECTABLE CANDELA STROBE (WHITE)	ZR-MC-W	4" SQUARE 2-1/8" DEEP	82" A.F.F. TO CENTER
SH	CEILING MOUNTED SELECTABLE CANDELA STROBE (WHITE)	ST-MC-CW	4" SQUARE 2-1/8" DEEP	CEILING MOUNT
SH	WALL MOUNTED SELECTABLE CANDELA HORN-STROBE (WHITE)	ZH-MC-W	4" SQUARE 2-1/8" DEEP	82" A.F.F. TO CENTER
SH	CEILING MOUNTED SELECTABLE CANDELA HORN-STROBE (WHITE)	SH-MC-CW	4" SQUARE 2-1/8" DEEP	CEILING MOUNT
SE	WALL MOUNTED SELECTABLE CANDELA SPEAKER STROBE (WHITE)	SE-MC-W	4" SQUARE 2-1/8" DEEP	82" A.F.F. TO CENTER
SE	CEILING MOUNTED SELECTABLE CANDELA SPEAKER STROBE (WHITE)	SE-MC-CW	4" SQUARE 2-1/8" DEEP	CEILING MOUNT
SP	WALL MOUNTED SPEAKER (WHITE)	SE-W	4" SQUARE 2-1/8" DEEP	82" A.F.F. TO CENTER
SP	CEILING MOUNTED SPEAKER (WHITE)	SE-CW	4" SQUARE 2-1/8" DEEP	CEILING MOUNT
TS	TAMPER SWITCH	F.B.O.	N/A	N/A
WF	WATER FLOW SWITCH	F.B.O.	N/A	N/A
CR	CONTROL RELAY	MR-201/C	SELF-CONTAINED	FIELD LOCATE
DR	DOOR HOLDER	DR24120FPC	4" SQUARE 2-1/8" DEEP	FIELD LOCATE

NOTE: ALL SYMBOLS MAY NOT APPLY TO THESE DRAWINGS; ALL VISUAL DEVICES TO BE 15/75 UNLESS NOTED ON DRAWINGS.
 NOTE: "E" DENOTES EXISTING DEVICE

WIRE LEGEND	
---	F/A DETECTION CKT - 1 PAIR #18 FPLR/FPLP
---	F/A STROBE/HORN STROBE CKT - 1 PAIR #14 FPLR/FPLP
---	F/A SPEAKER CKT - 1 PAIR #16 SHLD FPLR/FPLP

FIRE ALARM SYSTEM GENERAL NOTES

- ALL SMOKE DETECTOR LOCATIONS ARE GENERAL. THE FOLLOWING RULES MUST BE OBSERVED FOR SMOKE DETECTOR PLACEMENT.
 - A- SMOKE DETECTORS SHALL NOT BE INSTALLED CLOSER THAN 3' FROM AN AIR CONDITIONING VENT.
 - B- IN ROOMS SMALLER THAN 30'x30' THE DETECTOR SHALL BE CENTERED IN THE ROOM IF POSSIBLE BY OBSERVING THE ABOVE RULE.
 - C- IN ROOMS WHERE MULTIPLE DETECTORS ARE SHOWN, DETECTORS SHALL BE INSTALLED NO FURTHER THAN 30' FROM EACH OTHER NOR ANY FURTHER THAN 15' FROM A SIDE WALL WITHOUT APPROVAL FROM PRIORITY SYSTEMS.
- DETECTOR AND AUDIBLE CIRCUIT POLARITY SHALL BE OBSERVED.
- AUDIBLE/VISUAL CIRCUIT WIRING IS SUPERVISED. NO PARALLEL BRANCHING IS PERMISSIBLE.
- CONDUIT RUNS SHOWN DIAGRAMMATICALLY. EXACT LOCATION IS TO BE DETERMINED IN THE FIELD.
- INSTALLATION SHALL BE IN STRICT CONFORMANCE WITH THE NATIONAL ELECTRIC CODE, LOCAL CODE(S), AND/OR AUTHORITY HAVING JURISDICTION.
- INSTALLATION MATERIALS (I.E. CONDUIT, WIRE, FITTINGS, HANGERS, AND STANDARD BOXES) ARE NOT SUPPLIED BY PRIORITY SYSTEMS.
- WIRING SHALL BE PER PLAN WITH RESPECT TO CONDUCTOR SIZE, TYPE, QUANTITY AND COLOR CODE. CONDUCTORS SHALL BE PERMANENTLY MARKED FOR FUTURE IDENTIFICATION.
- INSTALLING CONTRACTOR SHALL RETURN ONE SET OF ACCURATELY MARKED DRAWINGS FOR "AS BUILT" PURPOSES.
- FOR ADDITIONAL INSTALLATION INSTRUCTIONS, REFER TO CATALOG CUT SHEETS AND/OR INSTALLATION INSTRUCTIONS.
- 120vac POWER SHALL NOT BE APPLIED TO FIRE ALARM PANEL WITHOUT DIRECT SUPERVISION OF TECHNICIAN.
- INSTALL A DUCT SMOKE DETECTOR IN ALL AHU'S WITH A CFM OF 2000 OR GREATER. ALL AHU'S WITH A CFM OF 2000 OR GREATER TO BE SHUTDOWN BY FIRE ALARM CONTROL PANEL.
- VERIFY MOUNTING LOCATIONS FOR ALL FACP'S, EVAC'S, PAD'S AND ANN'S WITH ELECTRICAL CONTRACTOR.
- UNLESS OTHERWISE NOTED ALL SPEAKERS SHOULD BE TAPPED AT 1/4 WATT.

PRIORITY SYSTEMS INC.
 SPECIAL SYSTEMS CONTRACTOR
 METAIRIE, LOUISIANA 70001
 5221 WEST NAPOLEON AVE.
 OFFICE: (504)887-8884
 FAX: (504)888-6542
 www.PrioritySystemsinc.net
 info@PrioritySystemsinc.net

TEXTRON - STONE ROAD ADDITIONS
 252 STONE ROAD
 SLIDELL, LA 70460

NOTES: 470018

SHEET TITLE	
FIRE ALARM SYSTEM	
DESIGNED BY:	M. LEJEUNE, JR.
DRAWN BY:	T. NEAL
APPROVED BY:	M. LEJEUNE, JR.
DATE:	JUNE 2015
SCALE:	1/8" = 1'-0"
PROJECT NO.:	881-11
DRAWING NO.:	FA-1.0