

**DAMMON**  
ENGINEERING, INC.  
CHIEF ENGINEER  
EMMETT  
DAMMON, P.E.  
CHIEF ARCHITECT  
ROBERT  
WILTSE

554 OLD SPANISH TRAIL  
SLIDELL, LA. 70458  
OFFICE: 985-649-5882  
FAX: 985-641-5950

WEBSITE:  
WWW.DAMMONENGINEERING.COM  
EMAIL:  
DAMMONENG@BELL.SOUTH.NET

ARCHITECTURE  
ENGINEERING  
STUDIES  
PLANNING  
INVESTIGATION  
EXPERT WITNESS

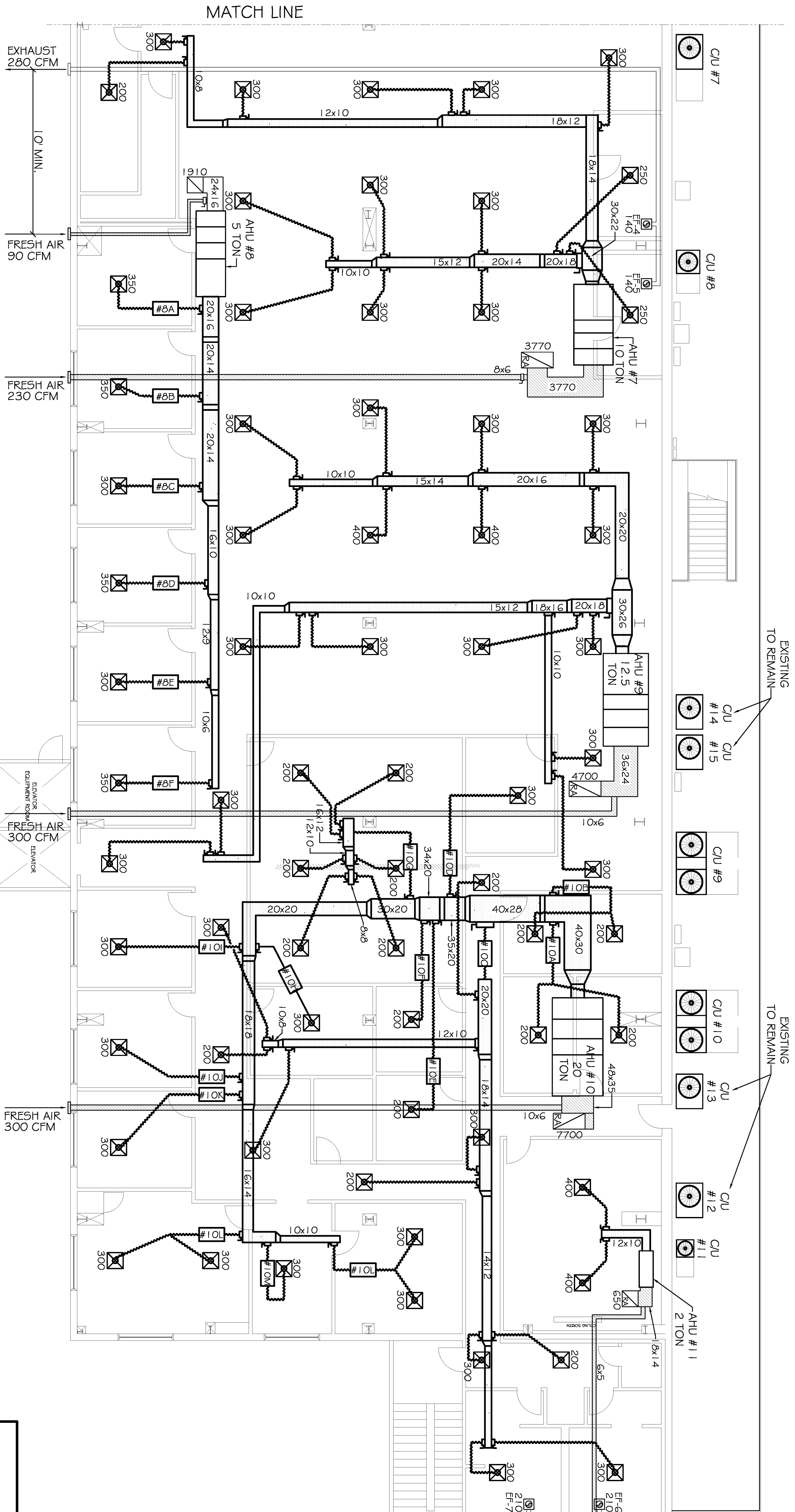
TM&LS  
NEW ORLEANS  
FACILITY

TEXTRON MARINE  
# LAND SYSTEMS  
19401 CHEF MENTLER HWY  
NEW ORLEANS, LA  
70129

MECH PLAN  
EAST SIDE

REV:  
SCALE:  
JOB#: 2133  
DATE: 04-04-12  
SHEET

OF



**HVAC UNIT SCHEDULE**  
TOTAL HVAC TONS = 20

NO.	TOTAL BTU	CFM	O.A.	HEAT ELEC.	VOLTAGE	COMMENTS
1	150,000	5,000	215	16 KW	480V, 3Ø	
2	12.5 TON	8,000	310	22 KW	480V, 3Ø	
3	240,000	8,000	310	22 KW	480V, 3Ø	
4	60,000	2,000	90	10 KW	480V, 3Ø	W/ SYSTEM W/ BYPASS
5	35,000	1,200	200	8 KW	480V, 3Ø	
6	49,000	1,600	310	10 KW	480V, 3Ø	
7	48,000	4,000	230	14 KW	480V, 3Ø	
8	60,000	2,000	90	10 KW	480V, 3Ø	W/ SYSTEM W/ BYPASS
9	150,000	5,000	300	16 KW	480V, 3Ø	
10	240,000	8,000	300	22 KW	480V, 3Ø	W/ SYSTEM W/ BYPASS
11	24,000	800	150	6 KW	480V, 3Ø	

**EXHAUST FAN SCHEDULE**

FAN NO.	CFM	VOLTAGE	TYPE	MANF.
EF-1, 2, 3	100	120	VENT ONLY	
EF-4, 5	140	120	VENT ONLY	
EF-6, 7	210	120	VENT ONLY	

**MECH PLAN EAST**  
SCALE: 1/8" = 1'-0"

**LEGEND**

- INDICATES NEW CEILING DIFFUSER - CFM AS NOTED - 2.4x2.4 UNLESS OTHERWISE NOTED.
- INDICATES NEW RETURN AIR CEILING GRILLE OF SIZE INDICATED. TRANSFER DUCT TO BE RECTANGULAR AS INDICATED.
- MECHANICAL VENT
- THERMOSTAT
- CONDENSOR UNIT
- SINGLE DUCT VVT TERMINAL

INDICATES NEW SHEET METAL DUCTWORK FOR SUPPLY AIR. SIZES INDICATED ARE SHEET METAL DIMENSIONS

INDICATES NEW SHEET METAL DUCTWORK FOR RETURN AIR. SIZES INDICATED ARE SHEET METAL DIMENSIONS

ROUND FLEX DUCT, MAX. LENGTH 12'-0". MIN. R-6. PROVIDE MAN. DAMPER AT DIFFUSER CONNECTIONS. SIZE AS INDICATED OR:  
0.200 CFM, USE 6/8  
201-300 CFM, USE 8/8  
301-400 CFM, USE 9/8

**SINGLE DUCT TERMINAL BOX SCHEDULE (WITH RE-HEAT)**

Unit Served	Tag	Inlet Size	Primary CFM	Inlet SP in wg	kW Heat	Sq. Ft. Coverage	Min. Ventilation CFM	% Min. CFM
AHU-4	#4-A,B	5	300	0.5	2.0	145	12	4.1
	#4-C	5	200	0.5	1.5	135	11	5.7
	#4-D,E,F,G,H,I	5	200	0.5	1.0	100	9	4.3
AHU-8	#8-A,B,F	6	350	0.5	2.0	180	15	4.4
	#8-C,D,E	5	300	0.5	2.0	170	14	4.8
AHU-10	#10-A	6	400	0.5	2	290	25	6.2
	#10-B	6	400	0.5	2	200	17	4.3
	#10-C	14	2600	0.5	8	850	51	2.0
	#10-D	4	200	0.5	2	160	14	4.9
	#10-E,F	4	200	0.5	1	115	10	4.5
	#10-G	10	1200	0.5	8	820	70	5.8
	#10-H,I,J,K	5	300	0.5	2	175	15	5.0
	#10-L	8	600	0.5	4	375	32	5.3
	#10-M	5	300	0.5	1.5	165	14	4.7
	#10-N	8	600	0.5	2	265	23	3.8

