

Dammon Engineering Inc.

1095 Florida Ave.
Slidell, LA 70458
(985) 649-5832
Fax: (985) 641-5950

FAX COVER SHEET

FAX NUMBER TRANSMITTED TO: 882-1534

TO: COAST

FROM: CHUCK

CLIENT/MATTER: _____

REFERENCE: _____

DATE: 1-30-07 NO. OF PAGES INCLUDING COVER SHEET: 7

COMMENTS: _____

REVISED BATHROOM

LAYOUT!

Chuck

IF YOU EXPERIENCE ANY PROBLEMS RECEIVING THIS FAX, PLEASE CALL (985) 649-5832,
OR FAX (985) 641-5950

STATE OF LOUISIANA
Department of Public Safety and Corrections
Office of State Fire Marshal Code Enforcement and Building Safety
8181 Independence Boulevard
Baton Rouge, Louisiana 70806
225-925-4920

HENRY H. FRY
DEPUTY ASSISTANT SECRETARY

NEW CONSTRUCTION

EDWARD GREMILLION, P E, C E
DAMMON ENGINEERING, INC
1095 FLORIDA AVE
SLIDELL, LA 70458-0000

RE: P0315222
COAST CONCRETE SERVICES
29072 KRENTAL RD
LACOMBE, LA 70445-0000

NFPA 101, 2003

BUSINESS
STORAGE

Dear Applicant:

This is to advise that we have reviewed the drawings and specifications for the subject proposed construction and have determined that they appear to satisfactorily comply with the adopted laws, codes, rules and regulations of The State Fire Marshal subject to the following requirements:

1. **LRS 40:1730.45 and LAC 55:V:2601** The documentation provided for the subject facility appears to comply with The Commercial Building Energy Conservation Code based on ANSI/ASHRAE/IESNA 90.1- 2001, and the International Energy Conservation Code, 2000 edition, as applicable.
2. This review applies to **NEW WORK** indicated in the "EXISTING OFFICE BUILDING" and does not apply to existing non-conforming conditions. This review also applies to the "NEW OFFICE BUILDING" indicated in the drawings.

NOTE: THE COMMENTS LISTED BELOW IDENTIFY APPARENT DEFICIENCIES DETECTED IN OUR REVIEW OF THE DOCUMENTS SUBMITTED.

3. **LRS 40:1731-(Effective 8/15/95)** Provide handicapped accessibility in accordance with ADA-AG (Accessibility Guidelines - September 1994). This does not include a review for compliance with the Federal Americans with Disabilities (Civil Rights) Act of 1990. Compliance with state regulations and requirements does not guarantee compliance with federal law. Particular deficiencies and paragraph references are noted as follows:
 - a) 4.1.2(5) Provide ONE accessible parking space. (One of every 8 accessible spaces but not less than one shall be "VAN ACCESSIBLE" (96" wide space plus 96" wide aisle) with signage per 4.6.4).
 - b) 4.6.4 Handicap parking signage shall not be obscured by vehicle.
 - c) 4.29.5 A minimum 36 inch wide continuous "detectable warning" must be provided at the boundary between pedestrian areas and vehicular areas, that are not separated by curbs, railings or other elements.

- d) 4.7.7 A curb ramp shall have a "detectable warning" complying with 4.29.2. The "detectable warning" shall extend the full width and depth of the curb ramp.
- e) 4.29.2 Required "detectable warnings" on walking surfaces shall consist of raised truncated domes.
- f) 4.29.2 The "detectable warning" on walking surfaces shall CONTRAST VISUALLY with adjoining surfaces, either light-on-dark, or dark-on-light. The material used to provide the contrast shall be an integral part of the walking surface.
4. 101:38.3.2 Separate the "WAREHOUSE" from other parts of the building by 1 HOUR fire resistive construction with SELF-CLOSING 45 minute labeled door/frame assembly or provide automatic sprinkler protection in accordance with Section 9.7 and smoke partitions with self-closing doors in accordance with 8.7.1.2 and 8.4. (Sprinkler piping for isolated hazardous areas connected to domestic water supply shall comply with 101:9.7.1.2).
5. 101:8.3.3 Fire window assemblies shall conform to NFPA 80. (...SEE NOTES ON SHEET A - 1).
6. LAC 55:V:303D Provide listed portable FIRE EXTINGUISHERS in accordance with NFPA 10. (Refer to Appendix E for distribution information.)

NOTE: THE FOLLOWING COMMENTS IDENTIFY ISSUES FOR INFORMATIONAL AND CAUTIONARY PURPOSES OR ISSUES THAT COULD NOT BE VERIFIED IN THE SUBMITTED DOCUMENTS.

7. LRS 40:1731-(Effective 8/15/95) Provide handicapped accessibility in accordance with ADA-AG (Accessibility Guidelines - September 1994). This does not include a review for compliance with the Federal Americans with Disabilities (Civil Rights) Act of 1990. Compliance with state regulations and requirements does not guarantee compliance with federal law. Particular deficiencies and paragraph references are noted as follows:
- a) 4.1.6(1)(b) If existing elements, spaces, or common areas are altered, then each such altered element, space, feature, or area shall comply with the applicable provisions of 4.1.1 to 4.1.3. (...AT THE "EXISTING OFFICE BUILDING").
- b) 4.5 Ground and floor surfaces shall be stable, firm, and slip-resistant.
- c) 4.5.2 Thresholds shall comply with requirements of this section regarding changes in level. (Not more than 1/2" height and beveled if over 1/4").
- d) 4.13.9 Door hardware shall comply with this section. Hardware shall not require tight grasping, tight pinching, or twisting of the wrist to operate.
8. This exception is intended to allow the exemption from 'truncated dome' provisions of the ADA-AG at areas requiring detectable warning surfaces. (...THIS COMMENT APPLIES TO THE "NEW FACILITY" ONLY).

After consultation with the Office of Rehabilitation Services, it has been determined that this office will not require this facility to provide 'truncated domes' as the tactile warning at areas required to provide detectable warning surfaces, with the following stipulations:

1. THE ONLY ACCEPTABLE ALTERNATIVE tactile warning at areas required to provide detectable warning surfaces is a surface with a profile of minimum 1/4" deep grooves that are spaced 2" to 3" on center and scored into concrete at all locations that detectable warning surfaces are required. The scoring shall run perpendicular to the path of travel. A grid scoring pattern is permissible.

2. Other than the profile of the tactile warning, the detectable warning surface must comply with Section 4.29 of the ADAAG. (Note that the area of the detectable warning surface must have an integral color that contrasts with adjacent pedestrian and vehicular way surfaces.)

3. This exemption does not apply to public rights of way.

4. If a complaint is received about discrimination in hiring of handicapped individuals or concerning handicapped accessibility to any part of the facility, then this office shall reserve the right to investigate the complaint and, if justified, shall reserve the right to require the facility or a portion thereof to be upgraded to comply with the accessibility requirements enforced by this office.

5. Please note that this document indicates specific compliance with state regulations and does not guarantee nor attempt to circumvent compliance with federal law.

9. This exception is intended to apply to the STORAGE and INDUSTRIAL portions of the building ONLY.

After consultation with the Office of Rehabilitation Services, it has been determined that this office will not require the storage/industrial area(s) and associated toilet/bath portions of this facility to comply with any of the ADA-AG or LSC requirements for individuals with disabilities, with the following stipulations:

1. No floor plan modifications are permitted. Office additions and spaces created which constitute a change in use will require the upgrading of all existing non-complying features to conform with the provisions for new construction.

2. Provide features of accessibility for the public and administrative areas.

3. Visual alarm notification shall be provided if a fire alarm system is required by Code.

4. If a complaint is received about discrimination in hiring of handicapped individuals or concerning handicapped accessibility to any part of the facility, then this office shall reserve the right to investigate the complaint and, if justified, shall reserve the right to require the facility or a portion thereof to be upgraded to comply with the accessibility requirements enforced by this office.

5. Please note that this document indicates specific compliance with state regulations and does not guarantee nor attempt to circumvent compliance with federal law.

10. LAC 55:305 Insulation and insulation assemblies shall meet the requirements of Section 718, International Building Code, 2000 Edition.

a) Concealed and exposed insulation shall have a flame spread of 0-25 and a smoke developed of 0-450 in accordance with IBC 718.

11. High hazard storage (including oxidizers) or processes are NOT included in this review. If this facility is planning to handle or store materials of this nature, then plans and details shall be resubmitted for review prior to starting construction.

12. 101:7.2.1.3 Provide LANDINGS outside exterior doors LEVEL with the interior finish floor.

13. 101:8.2.2.3 Fire compartments shall be formed by fire barriers that are CONTINUOUS from foundation through all intervening construction to the roof deck, from outside wall to outside wall or from fire barrier to fire barrier, including continuity through all concealed spaces, such as those found above a ceiling, including interstitial spaces.
14. 101:7.2.1.5.9 Doors shall be openable with ONLY one releasing operation. A two-step release, such as a knob and an independent slide bolt, is NOT acceptable.
15. 101:7.2.1.5 Locks on doors in means of egress shall not require the use of a key, special device or special knowledge to open in the direction of egress.
16. Inadequate electrical systems have been found to be a major cause of fires throughout the state. The "Professional of Record" (Architect/Engineer) if required by LRS 37:155, otherwise, the Owner shall comply with the 2002 NFPA 70, National Electrical Code, for all proposed electrical work in this submittal. Electrical work/modifications may include, but not limited to the following: lighting fixtures (interior, exterior and site); receptacles; panelboards; panel schedules; load schedules; utility company or service transformer KVA size, number of phases, voltage and secondary short circuit amps; fixture schedules; wire type, size and circuiting; single line diagram; properly sized new and existing protective equipment, including service disconnect(s), panelboard(s), circuit breakers and fused switches, sized for available short circuit amps; properly sized system grounding conductor and grounding electrode(s); connection of the system grounding and bonding at the service disconnect enclosure(s); properly sized overload or overcurrent and short circuit protective devices for conductors, motors, transformers and equipment; properly sized conductors for equipment grounding and bonding of all metallic conduit and enclosures; installation of ground fault circuit receptacles; etc.
17. HVAC system shall be constructed in accordance with 101:9.2.
18. RS 23:536 Boilers, Pressure Vessels, and WATER HEATERS of 50 gallon capacity or larger and/or 100,000 BTU/HR heat input shall conform with the provisions of the Louisiana Boiler Inspection Law in accordance with adopted rules and regulations. (Contact our Boiler Section (800-256-5452) with any questions concerning this requirement.)
19. 101:9.2.1 Install smoke detectors to automatically stop the fan in HVAC duct systems OVER 2000 CFM in accordance with NFPA 90A:6.4.2(1). Where fire alarm system is required, duct detectors shall be connected to building alarm system.
20. 101:38.3.3 Interior walls and ceilings shall have a flame spread of 0-200 and a smoke development rating of 0-450.
21. NFPA 10:5.1.4 Provide portable fire extinguishers within the following travel distances (See Tables 10:5.2.1 and 5.3.1);
 - a) Travel distance to a fire extinguisher shall not exceed 75 feet for Class A, C and D fires.
 - b) Travel distance to a fire extinguisher shall not exceed 30 feet for Class B fires (liquids). (50 feet allowed for Light (low) Hazard 10-B, Ordinary (moderate) Hazard 20-B and Extra (high) Hazard 80-B.)
 - c) Travel distance to a fire extinguisher shall not exceed 30 feet for Class K fires (cooking appliances).
22. NFPA 10:1.5.6 Fire extinguishers shall not be obstructed or obscured from view.

23. NFPA 10:1.5.3 Fire extinguishers shall be conspicuously located where they will be readily accessible and immediately available in the event of fire. Preferably they shall be located along normal paths of travel, including exits from areas.
24. NFPA 10:1.5.10 Top of fire extinguisher, having a gross weight less than 40 lb, shall be not more than 5 feet above the floor; 3-1/2 feet if gross weight 40 lbs or greater.
25. 101:4.6.11 Buildings or portions of buildings shall be permitted to be occupied during construction, repair, alterations, or additions only if ALL means of egress and ALL fire protection features are in place and continuously maintained for the portion occupied. (...AT THE "EXISTING OFFICE BUILDING").
26. **NOTE: Please enclose a copy of this letter with future submittals or other correspondence pertaining to this project.**

Changes to construction in the field which are not consistent with the reviewed documents are not authorized unless reviewed by this office for compliance with Code. Modifications to reviewed plans must be submitted to this office by the Architect/Civil Engineer for review prior to final inspection. If an Architect or Civil Engineer is not required by RS 37:155, revisions shall be submitted by the Owner. Submittals shall include plans, completed application, a minimum \$55.00 review fee, and a copy of the most current plan review letter.

Compliance with code requirements for fire protection systems, such as Fire Alarm, Sprinkler and Suppression Systems, is determined by separate shop drawing submittal and is not included in this review.

This review shall in no way permit and/or authorize any omissions or deviations from the specific requirements of the adopted codes, rules and regulations in accordance with R.S. 40:1574.1(B).

This review is valid for 180 days from the date of this letter. Construction permits must be issued and/or construction must commence within this time period.

This office requires certification of the completed project in accordance with the approved documents (certificate enclosed).

Occupancy of the project will not be permitted until we receive the completed certificate and a satisfactory inspection of the completed construction has been made by this office.

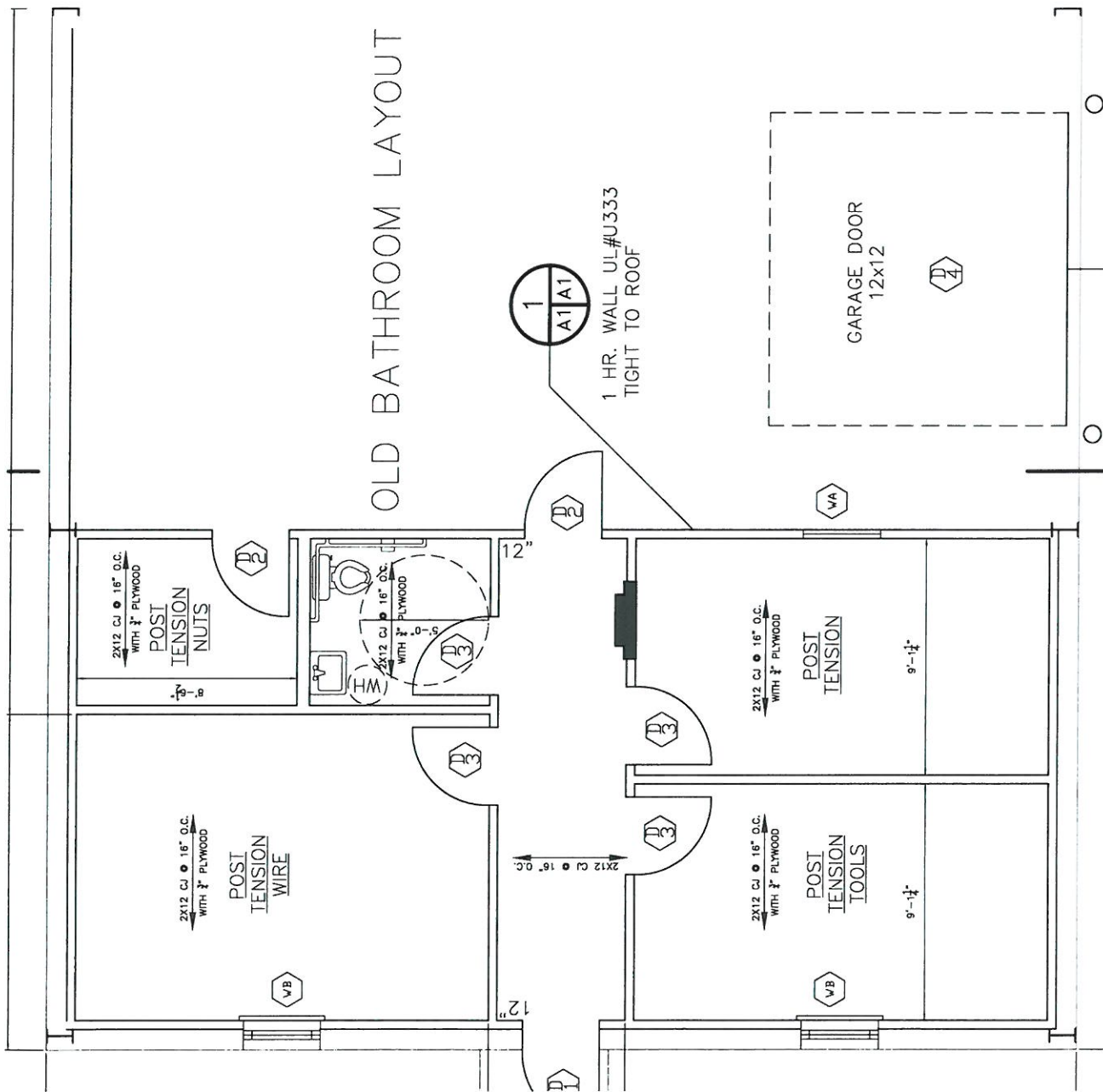
To arrange for inspection of the project, please contact the District Office at the phone number below two (2) to three (3) weeks in advance. The plans stamped reviewed by this office must be available on job site at time of inspection. Certificate of completion must be provided to the inspecting Deputy for final inspection.

REVIEWED BY:
JAMAR GARDNER
PLAN REVIEW DEPUTY

CC:
Coast Concrete
Division Of Permits & Inspections (Stam)*
New Orleans District* 5042194600

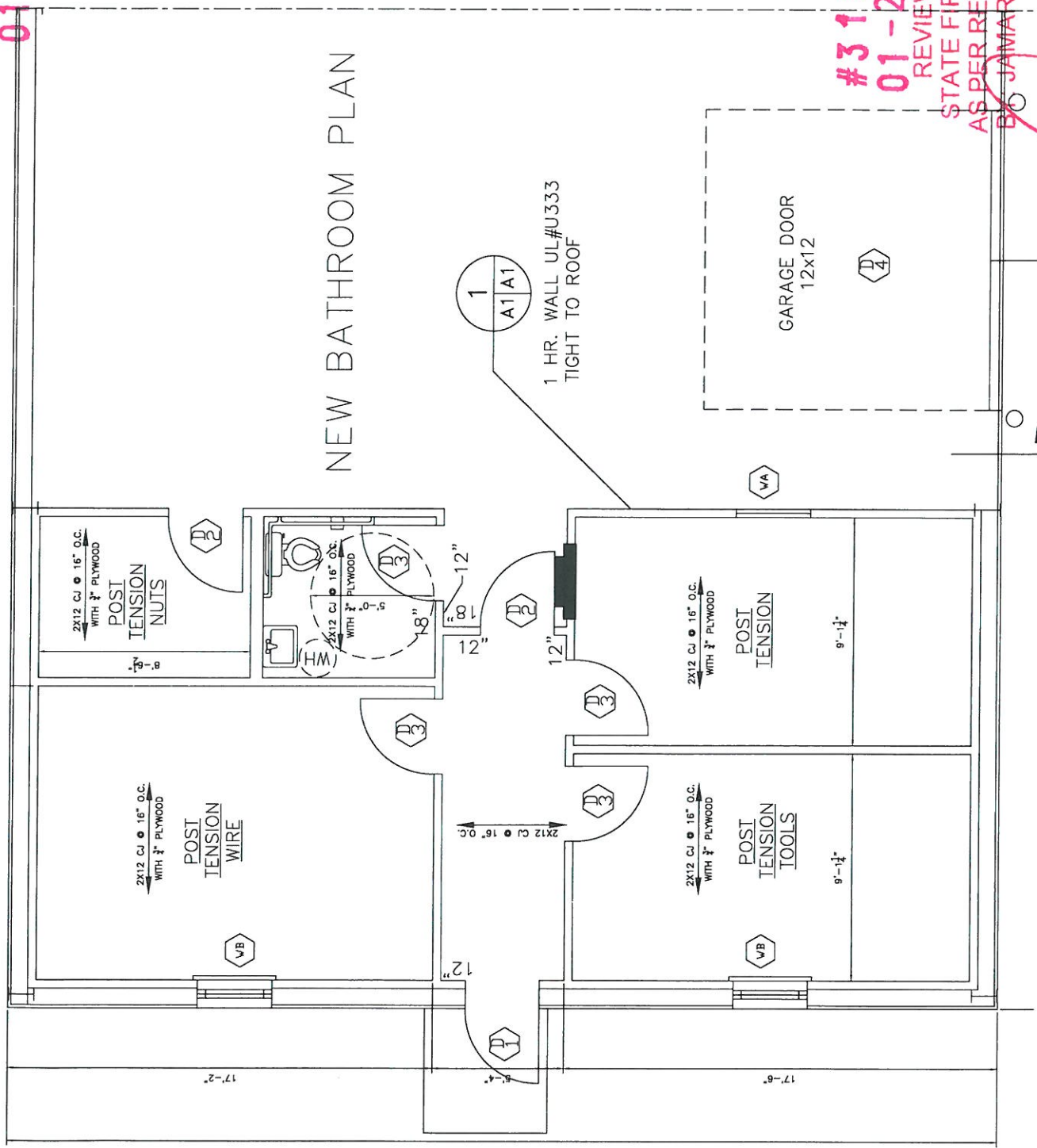
#315222,
01-25-07

OLD BATHROOM LAYOUT



#315222,
01-25-07

NEW BATHROOM PLAN



1
A1/A1

1 HR. WALL UL#U333
TIGHT TO ROOF

GARAGE DOOR
12x12

2x12 CJ @ 16" O.C.
WITH 3/4" PLYWOOD
POST
TENSION
NUTS

2x12 CJ @ 16" O.C.
WITH 3/4" PLYWOOD
POST
TENSION
WIRE

2x12 CJ @ 16" O.C.
WITH 3/4" PLYWOOD
POST
TENSION

2x12 CJ @ 16" O.C.
WITH 3/4" PLYWOOD
POST
TENSION
TOOLS

#315222,
01-25-07

REVIEWED FOR
STATE FIRE MARSHAL
AS PER REVIEW LETTER
BY JAMAR T. GARDNER

Jamar Gardner