



DAMMON
ENGINEERING, INC.
EMMETT
DAMMON

ARCHITECT
ROBERT
SOLLBERGER

1095 FLORIDA AVENUE
SLIDELL, LA, 70458
985-649-5832

WEBSITE:
WWW.DAMMONENGINEERING.COM
EMAIL:
DAMMONENG@BELLSOUTH.NET

ARCHITECTURE
ENGINEERING
STUDIES
PLANNING
INVESTIGATION
EXPERT WITNESS

NEW OFFICE
BUILDING

PLATFORM CRANE
POWELL DRIVE
SLIDELL, LA

MECHANICAL
PLAN
SUITE D

REV:

SCALE: AS NOTED

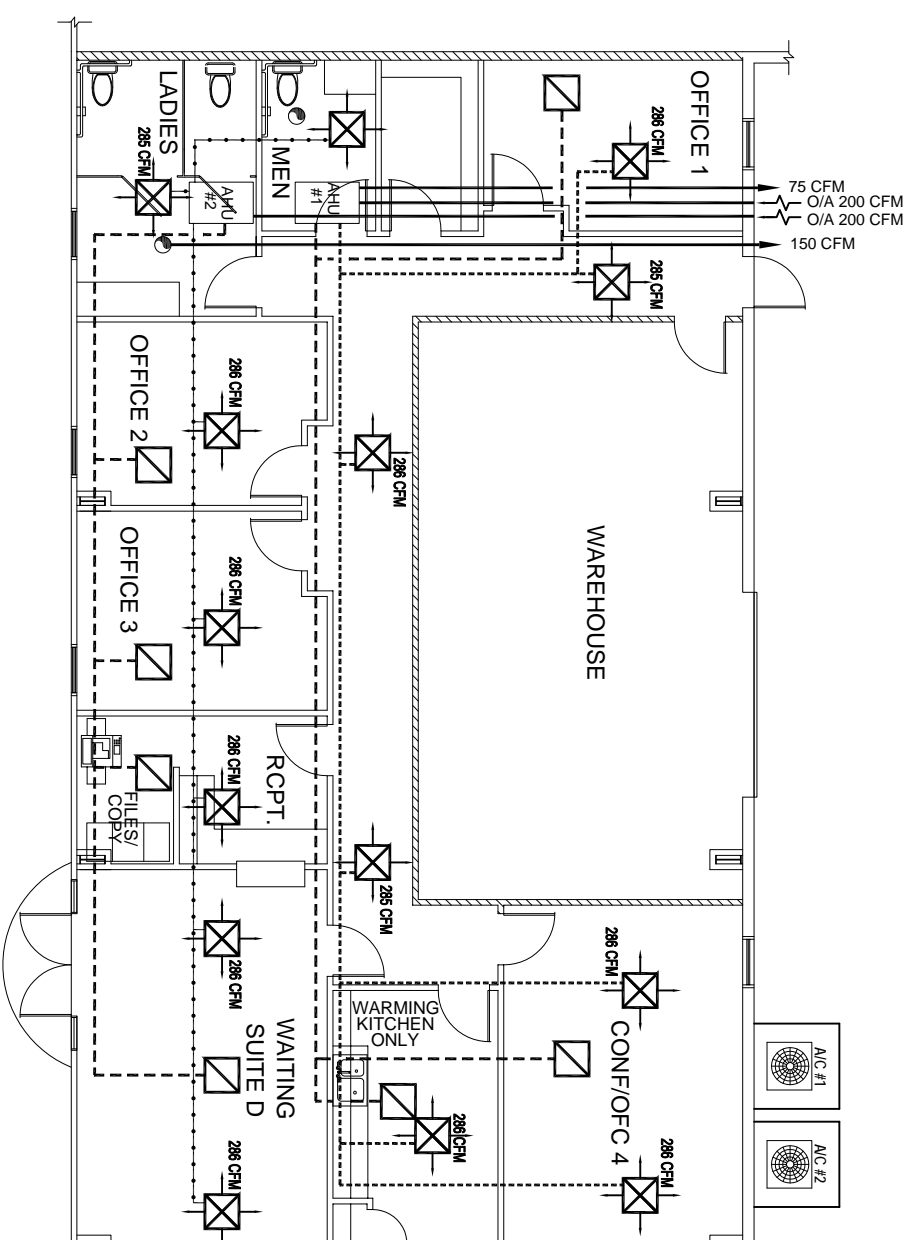
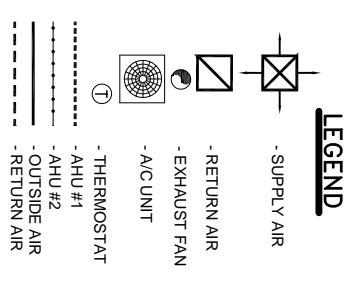
JOB#: 1898

DATE: 10-8-07

SHEET 18

M-4

OF 25



FOR MECHANICAL
NOTES SEE M-1

EXHAUST FAN SCHEDULE

LOC	CFM	VOLTAGE	TYPE	MANF.
TOILETS	SEE DWG	120	VENT/LIGHT	-

A/C SPLIT UNIT SCHEDULE

NO.	TOTAL BTU	CFM	O.A.	HEAT (KW)	VOLTAGE	ELECTRICAL	COMMENTS
1	60,000	2,000	200	20	208V, 3Ø	-	CARRIER
1	5 TON	2,000	200	20	208V, 3Ø	-	CARRIER
1	5 TON	2,000	200	20	208V, 3Ø	-	CARRIER

MECHANICAL PLAN SUITE D
SCALE: 3/16"=1'-0"

