



**DAMON**  
ENGINEERING, INC.  
EMMETT  
DAMON

ARCHITECT  
ROBERT  
SOLBERGER

1095 FLORIDA AVENUE  
SLIDELL, LA, 70458  
985-649-5832

WEBSITE:  
WWW.DAMONENGINEERING.COM  
EMAIL:  
DAMONENG@BELLSOUTH.NET

ARCHITECTURE  
ENGINEERING  
STUDIES  
PLANNING  
INVESTIGATION  
EXPERT WITNESS

NEW OFFICE  
BUILDING

PLATFORM CRANE  
POWELL DRIVE  
SLIDELL, LA

ELECTRICAL  
PLAN  
SUITE B

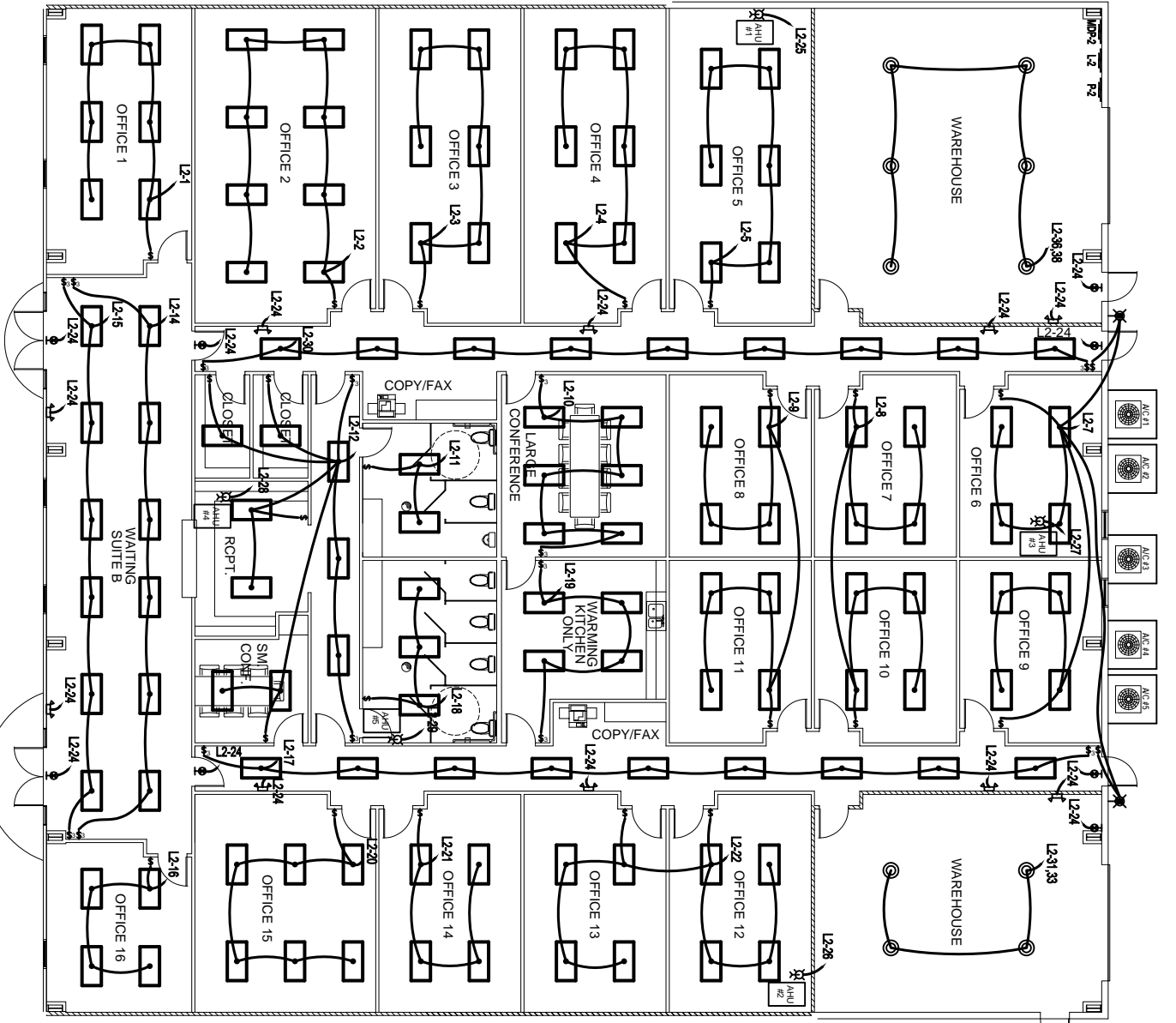
REV:

SCALE: AS NOTED  
JOB#: 1898

DATE: 10-8-07  
SHEET 20

E-2

OF 25

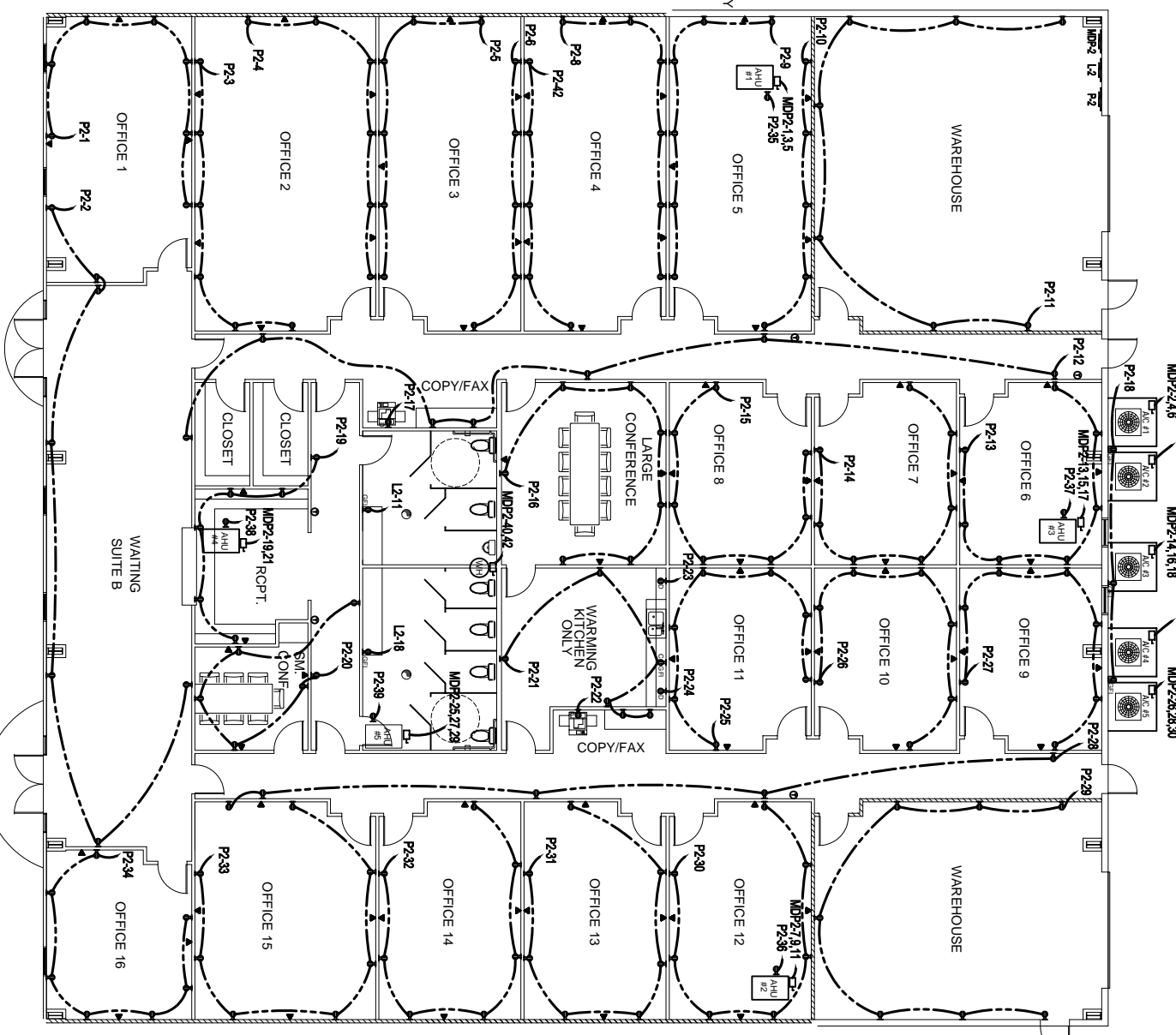


LIGHTING PLAN SUITE B  
SCALE: 1/8" = 1'-0"

PANEL: MDP-2  
LOCATION: SUITE B  
FEEDER SOURCE: CLO-2

VOLUME: 208/120V, 225A, 3#, 4# M.D. W/ ROOM MAIN  
ENCLOSURE: SERVICE MOUNTED W/EQUIPMENT AND BAY  
LOAD CENTER OR EQUIP.

NO.	DESCRIPTION	AMPS	FEEDER	LOAD	LOCATION	NO.	DESCRIPTION	AMPS	FEEDER	LOAD	LOCATION
1	OFFICE 1 LIGHTS	20	1	1500	OFFICE 1	1	OFFICE 1 LIGHTS	20	1	1500	OFFICE 1
2	OFFICE 2 LIGHTS	20	1	1500	OFFICE 2	2	OFFICE 2 LIGHTS	20	1	1500	OFFICE 2
3	OFFICE 3 LIGHTS	20	1	1500	OFFICE 3	3	OFFICE 3 LIGHTS	20	1	1500	OFFICE 3
4	OFFICE 4 LIGHTS	20	1	1500	OFFICE 4	4	OFFICE 4 LIGHTS	20	1	1500	OFFICE 4
5	OFFICE 5 LIGHTS	20	1	1500	OFFICE 5	5	OFFICE 5 LIGHTS	20	1	1500	OFFICE 5
6	OFFICE 6 LIGHTS	20	1	1500	OFFICE 6	6	OFFICE 6 LIGHTS	20	1	1500	OFFICE 6
7	OFFICE 7 LIGHTS	20	1	1500	OFFICE 7	7	OFFICE 7 LIGHTS	20	1	1500	OFFICE 7
8	OFFICE 8 LIGHTS	20	1	1500	OFFICE 8	8	OFFICE 8 LIGHTS	20	1	1500	OFFICE 8
9	OFFICE 9 LIGHTS	20	1	1500	OFFICE 9	9	OFFICE 9 LIGHTS	20	1	1500	OFFICE 9
10	OFFICE 10 LIGHTS	20	1	1500	OFFICE 10	10	OFFICE 10 LIGHTS	20	1	1500	OFFICE 10
11	OFFICE 11 LIGHTS	20	1	1500	OFFICE 11	11	OFFICE 11 LIGHTS	20	1	1500	OFFICE 11
12	OFFICE 12 LIGHTS	20	1	1500	OFFICE 12	12	OFFICE 12 LIGHTS	20	1	1500	OFFICE 12
13	OFFICE 13 LIGHTS	20	1	1500	OFFICE 13	13	OFFICE 13 LIGHTS	20	1	1500	OFFICE 13
14	OFFICE 14 LIGHTS	20	1	1500	OFFICE 14	14	OFFICE 14 LIGHTS	20	1	1500	OFFICE 14
15	OFFICE 15 LIGHTS	20	1	1500	OFFICE 15	15	OFFICE 15 LIGHTS	20	1	1500	OFFICE 15
16	OFFICE 16 LIGHTS	20	1	1500	OFFICE 16	16	OFFICE 16 LIGHTS	20	1	1500	OFFICE 16
17	WAITING SUITE B LIGHTS	20	1	1500	WAITING SUITE B	17	WAITING SUITE B LIGHTS	20	1	1500	WAITING SUITE B
18	WAREHOUSE LIGHTS	20	1	1500	WAREHOUSE	18	WAREHOUSE LIGHTS	20	1	1500	WAREHOUSE
19	CONFERENCE ROOM LIGHTS	20	1	1500	CONFERENCE	19	CONFERENCE ROOM LIGHTS	20	1	1500	CONFERENCE
20	WARMING KITCHEN LIGHTS	20	1	1500	WARMING KITCHEN	20	WARMING KITCHEN LIGHTS	20	1	1500	WARMING KITCHEN
21	RECEPTION LIGHTS	20	1	1500	RECEPTION	21	RECEPTION LIGHTS	20	1	1500	RECEPTION
22	SMALL CONFERENCE LIGHTS	20	1	1500	SMALL CONFERENCE	22	SMALL CONFERENCE LIGHTS	20	1	1500	SMALL CONFERENCE
23	RECEPTION LIGHTS	20	1	1500	RECEPTION	23	RECEPTION LIGHTS	20	1	1500	RECEPTION
24	RECEPTION LIGHTS	20	1	1500	RECEPTION	24	RECEPTION LIGHTS	20	1	1500	RECEPTION
25	RECEPTION LIGHTS	20	1	1500	RECEPTION	25	RECEPTION LIGHTS	20	1	1500	RECEPTION
26	RECEPTION LIGHTS	20	1	1500	RECEPTION	26	RECEPTION LIGHTS	20	1	1500	RECEPTION
27	RECEPTION LIGHTS	20	1	1500	RECEPTION	27	RECEPTION LIGHTS	20	1	1500	RECEPTION
28	RECEPTION LIGHTS	20	1	1500	RECEPTION	28	RECEPTION LIGHTS	20	1	1500	RECEPTION
29	RECEPTION LIGHTS	20	1	1500	RECEPTION	29	RECEPTION LIGHTS	20	1	1500	RECEPTION
30	RECEPTION LIGHTS	20	1	1500	RECEPTION	30	RECEPTION LIGHTS	20	1	1500	RECEPTION
31	RECEPTION LIGHTS	20	1	1500	RECEPTION	31	RECEPTION LIGHTS	20	1	1500	RECEPTION
32	RECEPTION LIGHTS	20	1	1500	RECEPTION	32	RECEPTION LIGHTS	20	1	1500	RECEPTION
33	RECEPTION LIGHTS	20	1	1500	RECEPTION	33	RECEPTION LIGHTS	20	1	1500	RECEPTION
34	RECEPTION LIGHTS	20	1	1500	RECEPTION	34	RECEPTION LIGHTS	20	1	1500	RECEPTION
35	RECEPTION LIGHTS	20	1	1500	RECEPTION	35	RECEPTION LIGHTS	20	1	1500	RECEPTION
36	RECEPTION LIGHTS	20	1	1500	RECEPTION	36	RECEPTION LIGHTS	20	1	1500	RECEPTION
37	RECEPTION LIGHTS	20	1	1500	RECEPTION	37	RECEPTION LIGHTS	20	1	1500	RECEPTION
38	RECEPTION LIGHTS	20	1	1500	RECEPTION	38	RECEPTION LIGHTS	20	1	1500	RECEPTION
39	RECEPTION LIGHTS	20	1	1500	RECEPTION	39	RECEPTION LIGHTS	20	1	1500	RECEPTION
40	RECEPTION LIGHTS	20	1	1500	RECEPTION	40	RECEPTION LIGHTS	20	1	1500	RECEPTION
41	RECEPTION LIGHTS	20	1	1500	RECEPTION	41	RECEPTION LIGHTS	20	1	1500	RECEPTION
42	RECEPTION LIGHTS	20	1	1500	RECEPTION	42	RECEPTION LIGHTS	20	1	1500	RECEPTION



POWER PLAN SUITE B  
SCALE: 1/8" = 1'-0"

PANEL: L-2  
LOCATION: SUITE B  
FEEDER SOURCE: MDP-2

VOLUME: 208/120V, 225A, 3#, 4# M.D. W/ ROOM MAIN  
ENCLOSURE: SERVICE MOUNTED W/EQUIPMENT AND BAY  
LOAD CENTER OR EQUIP.

NO.	DESCRIPTION	AMPS	FEEDER	LOAD	LOCATION	NO.	DESCRIPTION	AMPS	FEEDER	LOAD	LOCATION
1	OFFICE 1 LIGHTS	20	1	1500	OFFICE 1	1	OFFICE 1 LIGHTS	20	1	1500	OFFICE 1
2	OFFICE 2 LIGHTS	20	1	1500	OFFICE 2	2	OFFICE 2 LIGHTS	20	1	1500	OFFICE 2
3	OFFICE 3 LIGHTS	20	1	1500	OFFICE 3	3	OFFICE 3 LIGHTS	20	1	1500	OFFICE 3
4	OFFICE 4 LIGHTS	20	1	1500	OFFICE 4	4	OFFICE 4 LIGHTS	20	1	1500	OFFICE 4
5	OFFICE 5 LIGHTS	20	1	1500	OFFICE 5	5	OFFICE 5 LIGHTS	20	1	1500	OFFICE 5
6	OFFICE 6 LIGHTS	20	1	1500	OFFICE 6	6	OFFICE 6 LIGHTS	20	1	1500	OFFICE 6
7	OFFICE 7 LIGHTS	20	1	1500	OFFICE 7	7	OFFICE 7 LIGHTS	20	1	1500	OFFICE 7
8	OFFICE 8 LIGHTS	20	1	1500	OFFICE 8	8	OFFICE 8 LIGHTS	20	1	1500	OFFICE 8
9	OFFICE 9 LIGHTS	20	1	1500	OFFICE 9	9	OFFICE 9 LIGHTS	20	1	1500	OFFICE 9
10	OFFICE 10 LIGHTS	20	1	1500	OFFICE 10	10	OFFICE 10 LIGHTS	20	1	1500	OFFICE 10
11	OFFICE 11 LIGHTS	20	1	1500	OFFICE 11	11	OFFICE 11 LIGHTS	20	1	1500	OFFICE 11
12	OFFICE 12 LIGHTS	20	1	1500	OFFICE 12	12	OFFICE 12 LIGHTS	20	1	1500	OFFICE 12
13	OFFICE 13 LIGHTS	20	1	1500	OFFICE 13	13	OFFICE 13 LIGHTS	20	1	1500	OFFICE 13
14	OFFICE 14 LIGHTS	20	1	1500	OFFICE 14	14	OFFICE 14 LIGHTS	20	1	1500	OFFICE 14
15	OFFICE 15 LIGHTS	20	1	1500	OFFICE 15	15	OFFICE 15 LIGHTS	20	1	1500	OFFICE 15
16	OFFICE 16 LIGHTS	20	1	1500	OFFICE 16	16	OFFICE 16 LIGHTS	20	1	1500	OFFICE 16
17	WAITING SUITE B LIGHTS	20	1	1500	WAITING SUITE B	17	WAITING SUITE B LIGHTS	20	1	1500	WAITING SUITE B
18	WAREHOUSE LIGHTS	20	1	1500	WAREHOUSE	18	WAREHOUSE LIGHTS	20	1	1500	WAREHOUSE
19	CONFERENCE ROOM LIGHTS	20	1	1500	CONFERENCE	19	CONFERENCE ROOM LIGHTS	20	1	1500	CONFERENCE
20	WARMING KITCHEN LIGHTS	20	1	1500	WARMING KITCHEN	20	WARMING KITCHEN LIGHTS	20	1	1500	WARMING KITCHEN
21	RECEPTION LIGHTS	20	1	1500	RECEPTION	21	RECEPTION LIGHTS	20	1	1500	RECEPTION
22	SMALL CONFERENCE LIGHTS	20	1	1500	SMALL CONFERENCE	22	SMALL CONFERENCE LIGHTS	20	1	1500	SMALL CONFERENCE
23	RECEPTION LIGHTS	20	1	1500	RECEPTION	23	RECEPTION LIGHTS	20	1	1500	RECEPTION
24	RECEPTION LIGHTS	20	1	1500	RECEPTION	24	RECEPTION LIGHTS	20	1	1500	RECEPTION
25	RECEPTION LIGHTS	20	1	1500	RECEPTION	25	RECEPTION LIGHTS	20	1	1500	RECEPTION
26	RECEPTION LIGHTS	20	1	1500	RECEPTION	26	RECEPTION LIGHTS	20	1	1500	RECEPTION
27	RECEPTION LIGHTS	20	1	1500	RECEPTION	27	RECEPTION LIGHTS	20	1	1500	RECEPTION
28	RECEPTION LIGHTS	20	1	1500	RECEPTION	28	RECEPTION LIGHTS	20	1	1500	RECEPTION
29	RECEPTION LIGHTS	20	1	1500	RECEPTION	29	RECEPTION LIGHTS	20	1	1500	RECEPTION
30	RECEPTION LIGHTS	20	1	1500	RECEPTION	30	RECEPTION LIGHTS	20	1	1500	RECEPTION
31	RECEPTION LIGHTS	20	1	1500	RECEPTION	31	RECEPTION LIGHTS	20	1	1500	RECEPTION
32	RECEPTION LIGHTS	20	1	1500	RECEPTION	32	RECEPTION LIGHTS	20	1	1500	RECEPTION
33	RECEPTION LIGHTS	20	1	1500	RECEPTION	33	RECEPTION LIGHTS	20	1	1500	RECEPTION
34	RECEPTION LIGHTS	20	1	1500	RECEPTION	34	RECEPTION LIGHTS	20	1	1500	RECEPTION
35	RECEPTION LIGHTS	20	1	1500	RECEPTION	35	RECEPTION LIGHTS	20	1	1500	RECEPTION
36	RECEPTION LIGHTS	20	1	1500	RECEPTION	36	RECEPTION LIGHTS	20	1	1500	RECEPTION
37	RECEPTION LIGHTS	20	1	1500	RECEPTION	37	RECEPTION LIGHTS	20	1	1500	RECEPTION
38	RECEPTION LIGHTS	20	1	1500	RECEPTION	38	RECEPTION LIGHTS	20	1	1500	RECEPTION
39	RECEPTION LIGHTS	20	1	1500	RECEPTION	39	RECEPTION LIGHTS	20	1	1500	RECEPTION
40	RECEPTION LIGHTS	20	1	1500	RECEPTION	40	RECEPTION LIGHTS	20	1	1500	RECEPTION
41	RECEPTION LIGHTS	20	1	1500	RECEPTION	41	RECEPTION LIGHTS	20	1	1500	RECEPTION
42	RECEPTION LIGHTS	20	1	1500	RECEPTION	42	RECEPTION LIGHTS	20	1	1500	RECEPTION

- LEGEND**
- 2x4 RECESSED FLUORESCENT LAMP STEEL HOUSING
  - ⊕ EMERGENCY LIGHT WITH 90 MIN. BATTERY BACKUP
  - ⊖ 120V, 20A DUPLEX RECEPTACLE
  - ⊖ 120V, GFI RECEPTACLE
  - ⊖ 120V, DEDICATED RECEPTACLE COUNTER HEIGHT
  - ⊖ DISCONNECT
  - ⊖ POWER PANEL
  - ⊖ SWITCH
  - ⊖ 3-WAY SWITCH
  - ⊖ EXIT LIGHT 90 MINUTE BATTERY BACK-UP
  - ⊖ THERMOSTAT
  - ⊖ HIGH BAY LIGHT
  - ⊖ TELEPHONE / COMPUTER
  - ⊖ EXHAUST FAN
  - ⊖ 20 GAL WATER HEATER
  - ⊖ PULL CHAIN LIGHT
  - ⊖ EXTERIOR WATERPROOF WALL MOUNTED LIGHT W/ 90 MIN. BATTERY BACKUP

FOR ELECTRICAL NOTES SEE E-5