



DAMMON
ENGINEERING, INC.
EMMETT
DAMMON

ARCHITECT
ROBERT
SOLBERGER

1095 FLORIDA AVENUE
SLIDELL, LA. 70458
985-649-5832

WWW.DAMMONENGINEERING.COM
EMAIL:
DAMMONENG@BELLSOUTH.NET

ARCHITECTURE
ENGINEERING
STUDIES
PLANNING
INVESTIGATION
EXPERT WITNESS

NEW OFFICE
BUILDING

PLATFORM CRANE
POWELL DRIVE
SLIDELL, LA

MECHANICAL
PLAN
SUITE D

REV:

SCALE: AS NOTED

JOB#: 1898

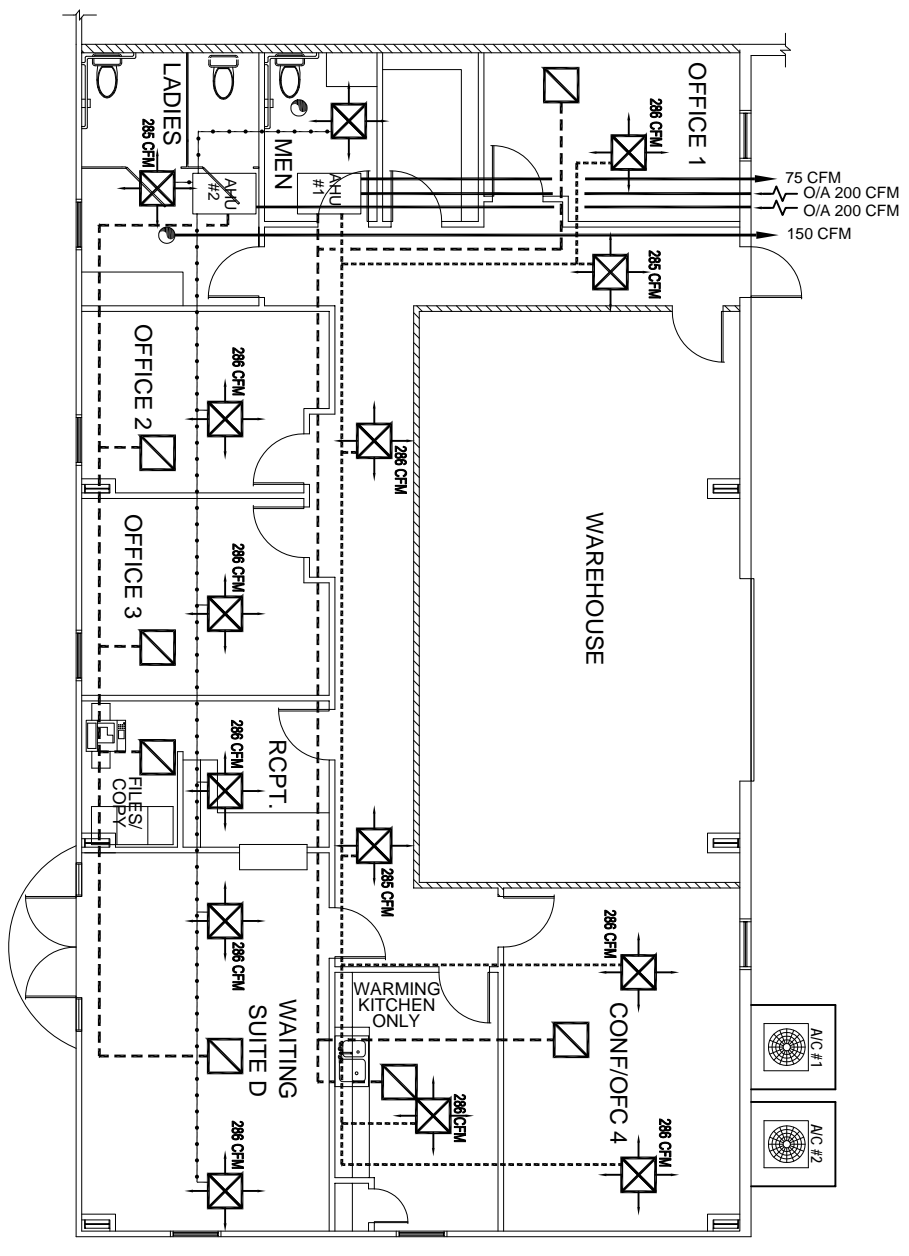
DATE: 10-8-07

SHEET 18

M-4

OF 25

- LEGEND**
- SUPPLY AIR
 - RETURN AIR
 - EXHAUST FAN
 - A/C UNIT
 - THERMOSTAT
 - AHU #1
 - AHU #2
 - OUTSIDE AIR
 - RETURN AIR



FOR MECHANICAL
NOTES SEE M-1

EXHAUST FAN SCHEDULE

LOC	CFM	VOLTAGE	TYPE	MANF.
TOILETS	SEE DWG	120	VENT/LIGHT	-

A/C SPLIT UNIT SCHEDULE

NO.	TOTAL RTU	CFM	O.A.	HEAT (KW)	VOLTAGE	MCA	CKT	BRKR	COMMENTS
1	8000	2000	200	20	208V, 3ø	-		MDP-4-2,4,6	CARRIER
1	8000	2000	200	20	208V, 3ø	-		MDP-4-8,10,12	CARRIER

MECHANICAL PLAN SUITE D
SCALE: 3/16" = 1'-0"

