

DAMMON
ENGINEERING, INC.
EMMETT
DAMMON

ARCHITECT
ROBERT
SOLLBERGER

1095 FLORIDA AVENUE
SLIDELL, LA. 70458
985-649-5832

WEBSITE:
WWW.DAMMONENGINEERING.COM

EMAIL:
DAMMONENG@BELLSOUTH.NET

ARCHITECTURE
ENGINEERING
STUDIES
PLANNING
INVESTIGATION
EXPERT WITNESS

**NEW OFFICE
BUILDING**

PLATFORM CRANE
POWELL DRIVE
SLIDELL, LA

**ELECTRICAL
PLAN
SUITE C**

REV:

SCALE: AS NOTED

JOB#: 1898

DATE: 10-8-07

SHEET 21

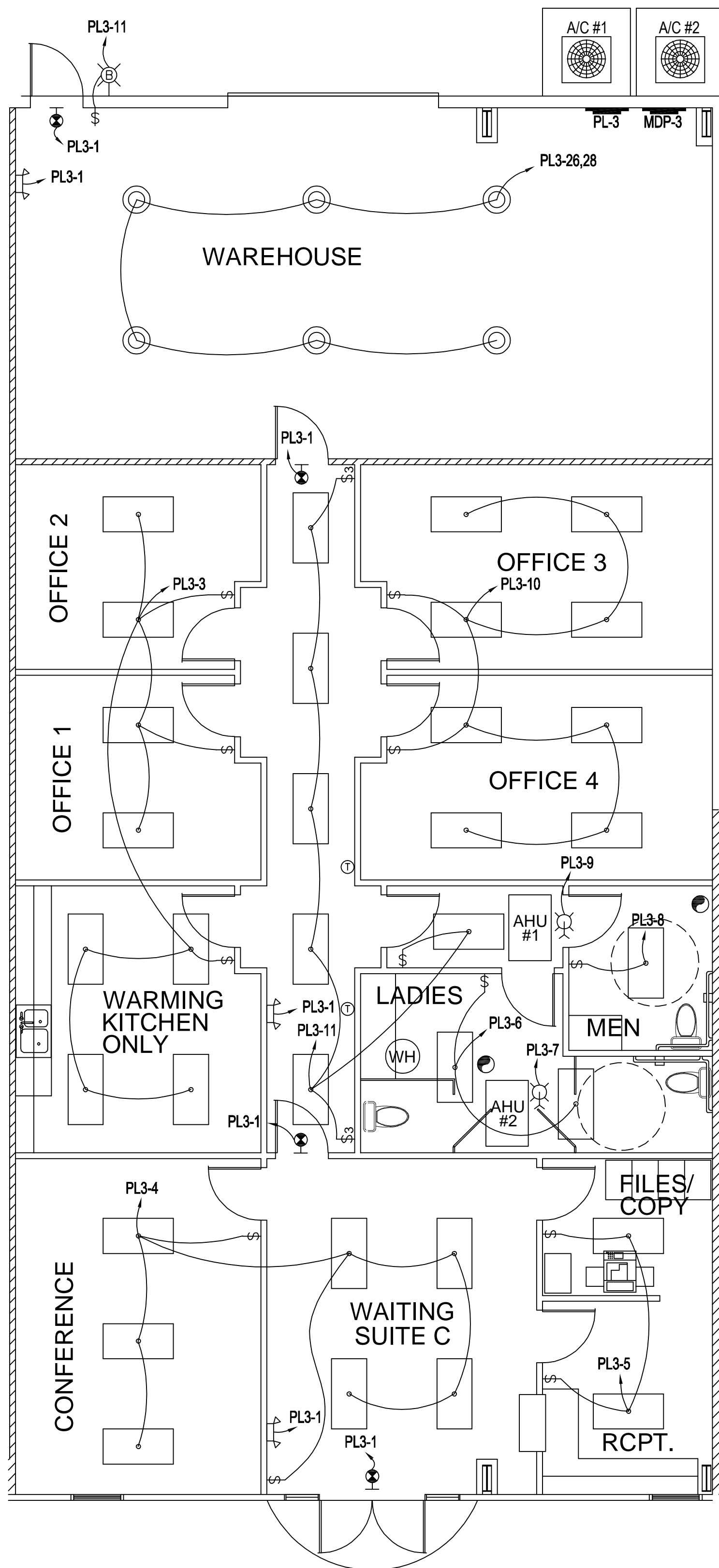
E-3

OF 25

LEGEND

- - 2x4' RECESSED FLUORESCENT LAMP, STEEL HOUSING
- ⚡ - EMERGENCY LIGHT WITH 90 MIN. BATTERY BACKUP
- ⚡ - 120V, 20A DUPLEX RECEPTACLE
- ⚡GFI - 120V, GFI RECEPTACLE
- ⚡D - 120V, DEDICATED RECEPTACLE
- ⚡GFI - 120V, GFI RECEPTACLE AT COUNTER HEIGHT
- ⏏ - DISCONNECT
- ⏏ - POWER PANEL
- ⚡ - SWITCH
- ⚡ - 3-WAY SWITCH
- ⚡ - EXIT LIGHT, 90 MINUTE BATTERY BACK-UP
- ⊖ - THERMOSTAT
- ⊖ - HIGH BAY LIGHT
- ☎ - TELEPHONE / COMPUTER
- ⊖ - EXHAUST FAN
- ⊖ - 20 GAL WATER HEATER
- ⊖ - PULL STRING LIGHT
- ⊖ - EXTERIOR WATERPROOF WALL MOUNTED LIGHT W/ 90 MIN. BATTERY BACKUP

FOR ELECTRICAL
NOTES SEE E-5



LIGHTING PLAN SUITE C
SCALE: 3/16"=1'-0"

PANEL: MDP-3 VOLTAGE: 208/120V, 225A 3φ, 4W MLD W/ 225A MAIN
LOCATION: SUITE C ENCLOSURE: SURFACE MOUNTED W/EQUIPMENT GND BAR
FEEDER SOURCE: CLECO LOAD CENTER OR EQUAL

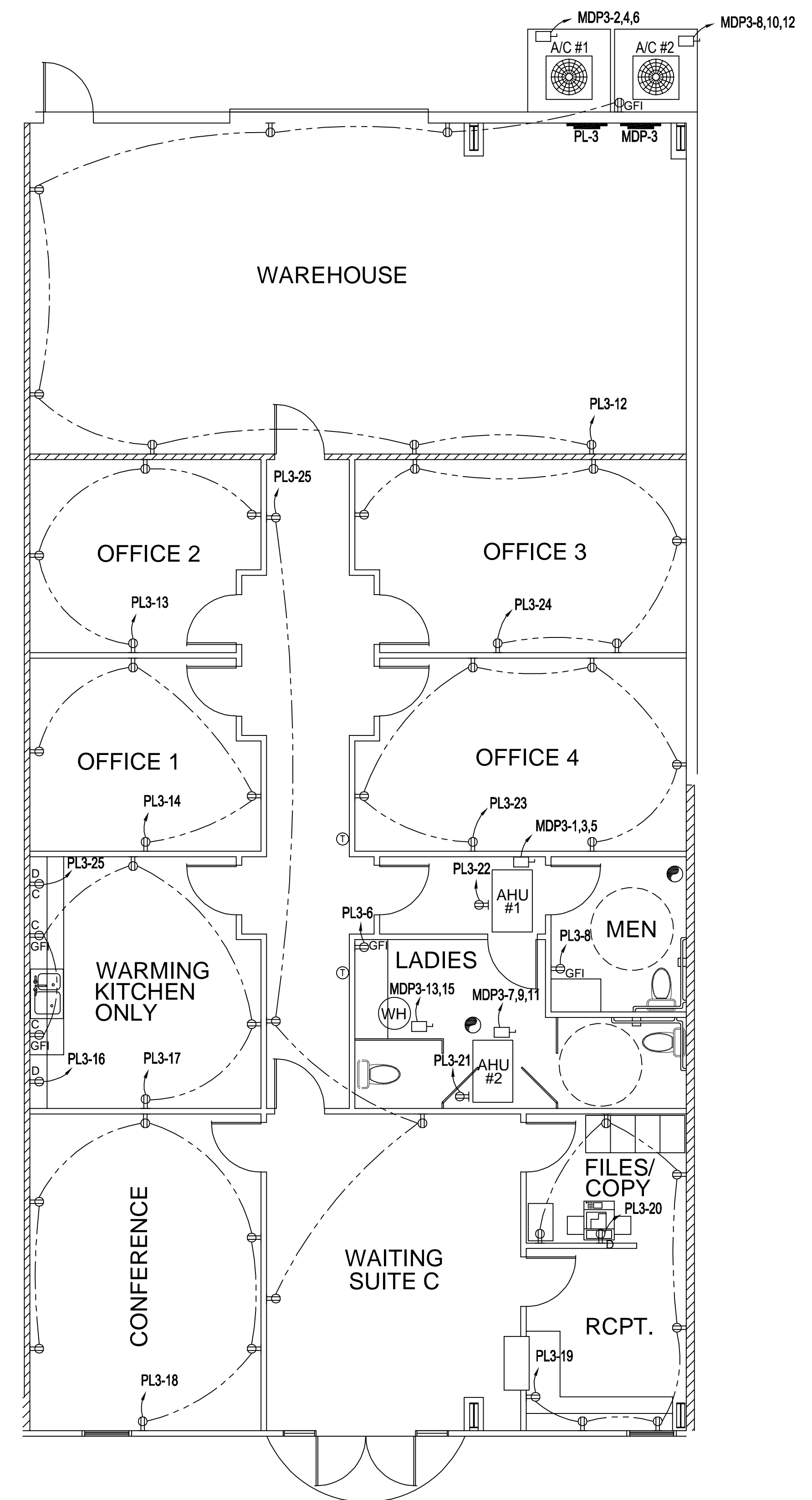
CKT. NO.	THIN WIRE SIZE	LOAD DESCRIPTION	BREAKER AMP	POLE	LOAD (VA)		BREAKER AMP	POLE	LOAD DESCRIPTION	THIN WIRE SIZE	CKT. NO.
					AM	CM					
1											2
3	#6	AHU #1 (INSIDE) 20 KW HEAT	60	3	20,000		5,000	3	A/C #1 (OUTSIDE) 5 TONS	#10	4
5											6
7											8
9	#6	AHU #2 (INSIDE) 20 KW HEAT	60	3	20,000		5,000	3	A/C #2 (OUTSIDE) 5 TONS	#10	10
11											12
13	#10	WATER HEATER 20 GALLONS	30	2	4,500			1	20 SPACE		14
15											16
17		SPACE	20	1				1	20 SPACE		18
19		SPACE	20	1				1	20 SPACE		20
21		SPACE	20	1				1	20 SPACE		22
23		SPACE	20	1				1	20 SPACE		24
25		SPACE	20	1				1	20 SPACE		26
27		SPACE	20	1				1	20 SPACE		28
29		SPACE	20	1				1	20 SPACE		30
31		SPACE	20	1				1	20 SPACE		32
33		SPACE	20	1				1	20 SPACE		34
35		SPACE	20	1				1	20 SPACE		36
37					6,460						38
39	3/0	PL-3 PANEL	225	3	7,120						40
41					7,220						42
					TOTAL CONNECTED LOAD (VA)						
					AM=25,376	BM=24,036	CM=23,884				

— SOLID NEUTRAL, NEUTRAL WIRE (W) — GROUND BUS GROUND WIRE (G)

PANEL: PL-3 VOLTAGE: 208/120V, 225A 3φ, 4W MLD
LOCATION: SUITE C ENCLOSURE: SURFACE MOUNTED W/EQUIPMENT GND BAR
FEEDER SOURCE: MDP-3 LOAD CENTER OR EQUAL

CKT. NO.	THIN WIRE SIZE	LOAD DESCRIPTION	BREAKER AMP	POLE	LOAD (VA)		BREAKER AMP	POLE	LOAD DESCRIPTION	THIN WIRE SIZE	CKT. NO.
					AM	CM					
1	#12	EMERGENCY/EXIT LIGHTS	20	1	200			1	20 SPACE		2
3	#12	KITCHEN & OFFICES 1,2 LIGHTS	20	1	1600		1400	1	20 CONFERENCE & WAITING ROOM LIGHTS	#12	4
5	#12	RECEPTION & FILE ROOM LIGHTS	20	1	400		560	1	20 WOMEN'S LIGHTS & RECEPTACLES	#12	6
7	#12	AHU #2 LIGHT	20	1	100		360	1	20 MEN'S LIGHTS AND RECEPTACLES	#12	8
9	#12	AHU #1 LIGHT	20	1	100		1600	1	20 OFFICES 3 & 4 LIGHTS	#12	10
11	#12	HALL & OUTSIDE LIGHTS	20	1	1300		1280	1	20 WAREHOUSE RECEPTACLES	#12	12
13	#12	OFFICE 2 RECEPTACLES	20	1	640		640	1	20 OFFICE 1 RECEPTACLES	#12	14
15		SPACE	20	1			1500	1	20 REFRIGERATOR	#12	16
17	#12	KITCHEN RECEPTACLES	20	1	800		960	1	20 CONFERENCE ROOM RECEPTACLES	#12	18
19	#12	RECEPTION / FILES RECEPTACLES	20	1	1120		1000	1	20 COPY MACHINE	#12	20
21	#12	AHU #2 RECEPTACLES	20	1	160		160	1	20 AHU #1 RECEPTACLE	#12	22
23	#12	OFFICE 4 RECEPTACLES	20	1	960		960	1	20 OFFICE 3 RECEPTACLES	#12	24
25	#12	MICROWAVE	20	1	1800		1200	2	30 WAREHOUSE LIGHTS	#10	26
27		SPACE	20	1				1	20 SPACE		28
29		SPACE	20	1				1	20 SPACE		30
31		SPACE	20	1				1	20 SPACE		32
33		SPACE	20	1				1	20 SPACE		34
35		SPACE	20	1				1	20 SPACE		36
37		SPACE	20	1							38
39		SPACE									40
41		SPACE									42
					TOTAL CONNECTED LOAD (VA)						
					AM=6,460	BM=7,120	CM=7,220				

— SOLID NEUTRAL, NEUTRAL WIRE (W) — GROUND BUS GROUND WIRE (G)



POWER PLAN SUITE C
SCALE: 3/16"=1'-0"