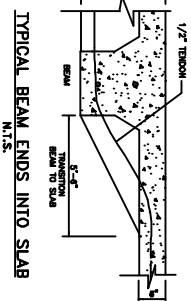
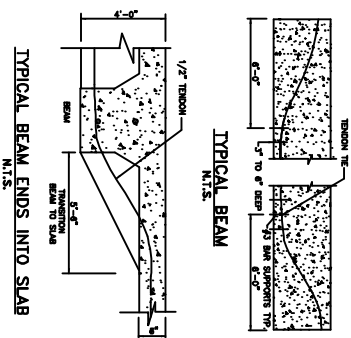
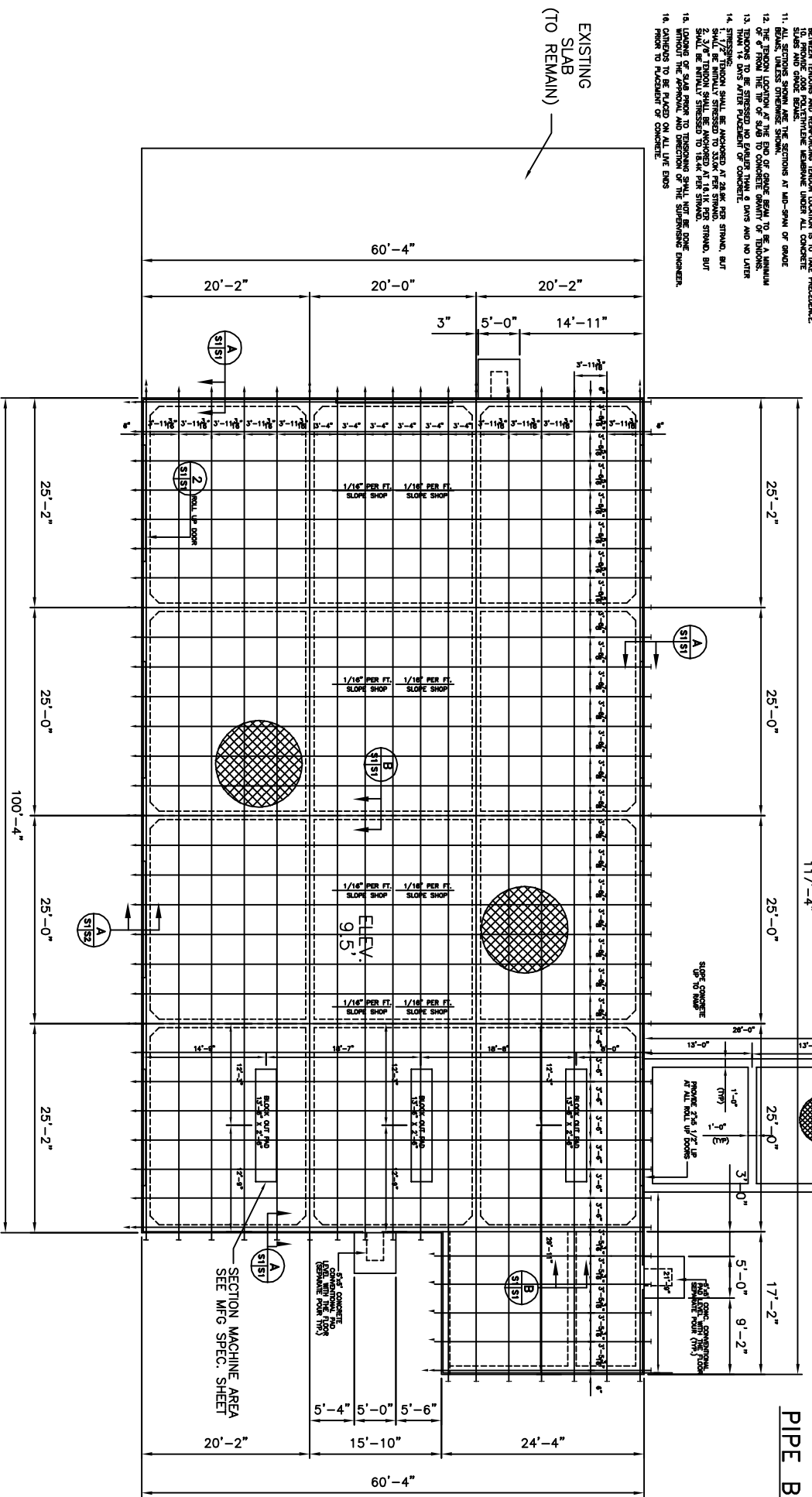
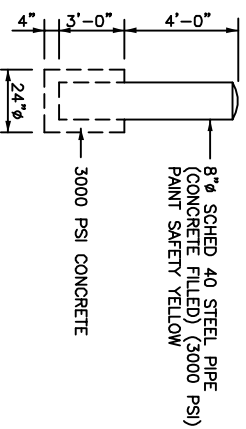
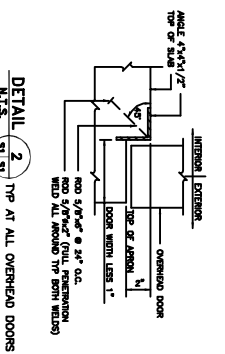
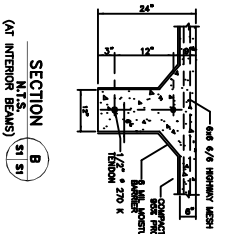
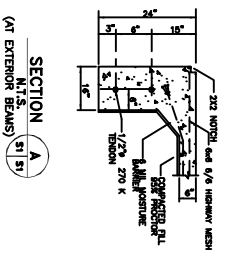


- FOUNDATION NOTES**
1. ALL CONCRETE SHALL BE 3000 PSI STRENGTH CONCRETE UNLESS OTHERWISE NOTED. A MINIMUM 4" THICK SLAB SHALL BE USED FOR ALL CONCRETE. ALL CONCRETE SHALL BE PLACED IN ONE LIFT UNLESS OTHERWISE NOTED. ALL CONCRETE SHALL BE FINISHED TO A FINISH GRADE UNLESS OTHERWISE NOTED.
 2. ALL CONCRETE SHALL BE PLACED IN ONE LIFT UNLESS OTHERWISE NOTED.
 3. ALL CONCRETE SHALL BE PLACED IN ONE LIFT UNLESS OTHERWISE NOTED.
 4. ALL CONCRETE SHALL BE PLACED IN ONE LIFT UNLESS OTHERWISE NOTED.
 5. ALL CONCRETE SHALL BE PLACED IN ONE LIFT UNLESS OTHERWISE NOTED.
 6. ALL CONCRETE SHALL BE PLACED IN ONE LIFT UNLESS OTHERWISE NOTED.
 7. ALL CONCRETE SHALL BE PLACED IN ONE LIFT UNLESS OTHERWISE NOTED.
 8. ALL CONCRETE SHALL BE PLACED IN ONE LIFT UNLESS OTHERWISE NOTED.
 9. ALL CONCRETE SHALL BE PLACED IN ONE LIFT UNLESS OTHERWISE NOTED.
 10. ALL CONCRETE SHALL BE PLACED IN ONE LIFT UNLESS OTHERWISE NOTED.
 11. ALL CONCRETE SHALL BE PLACED IN ONE LIFT UNLESS OTHERWISE NOTED.
 12. ALL CONCRETE SHALL BE PLACED IN ONE LIFT UNLESS OTHERWISE NOTED.
 13. ALL CONCRETE SHALL BE PLACED IN ONE LIFT UNLESS OTHERWISE NOTED.
 14. ALL CONCRETE SHALL BE PLACED IN ONE LIFT UNLESS OTHERWISE NOTED.
 15. ALL CONCRETE SHALL BE PLACED IN ONE LIFT UNLESS OTHERWISE NOTED.
 16. ALL CONCRETE SHALL BE PLACED IN ONE LIFT UNLESS OTHERWISE NOTED.



FOUNDATION PLAN
SCALE: 1/8" = 1'-0"

FOUNDATION PLAN

CHARLIE MAXWELL
2528 OLD SPANISH TRAIL
SLIDELL, LOUISIANA

BAYOU TRUCK AND TRAILER

DAMMON ENGINEERING, INC.

1095 FLORIDA AVENUE 985-649-5832 SLIDELL, LA. 70458
DAMMONENGINEERING.COM

SCALE: AS NOTED

FILE:

JOB NO.

DATE: 12-19-06

SHEET

S-1

OF