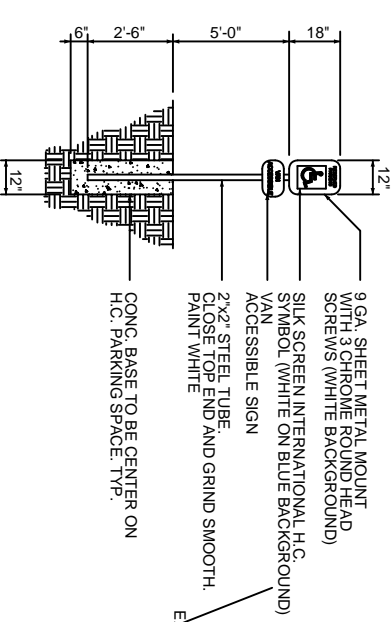


HANDICAP SYMBOL DETAIL
N.T.S.

NOTE:
SIGNAGE SHALL COMPLY
WITH SIGNAGE GUIDELINES



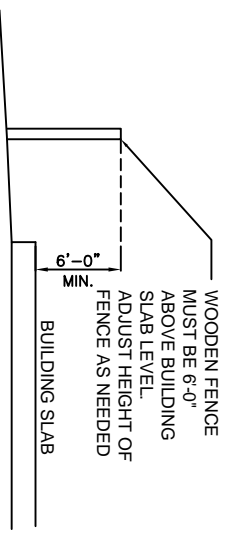
HANDICAP PARKING SIGN
N.T.S.

AREA BY USE
TOTAL OFFICE SQ.FT. = 4500
TOTAL WAREHOUSE SQ.FT. = 4500
TOTAL BUILDING SQ.FT. = 9000

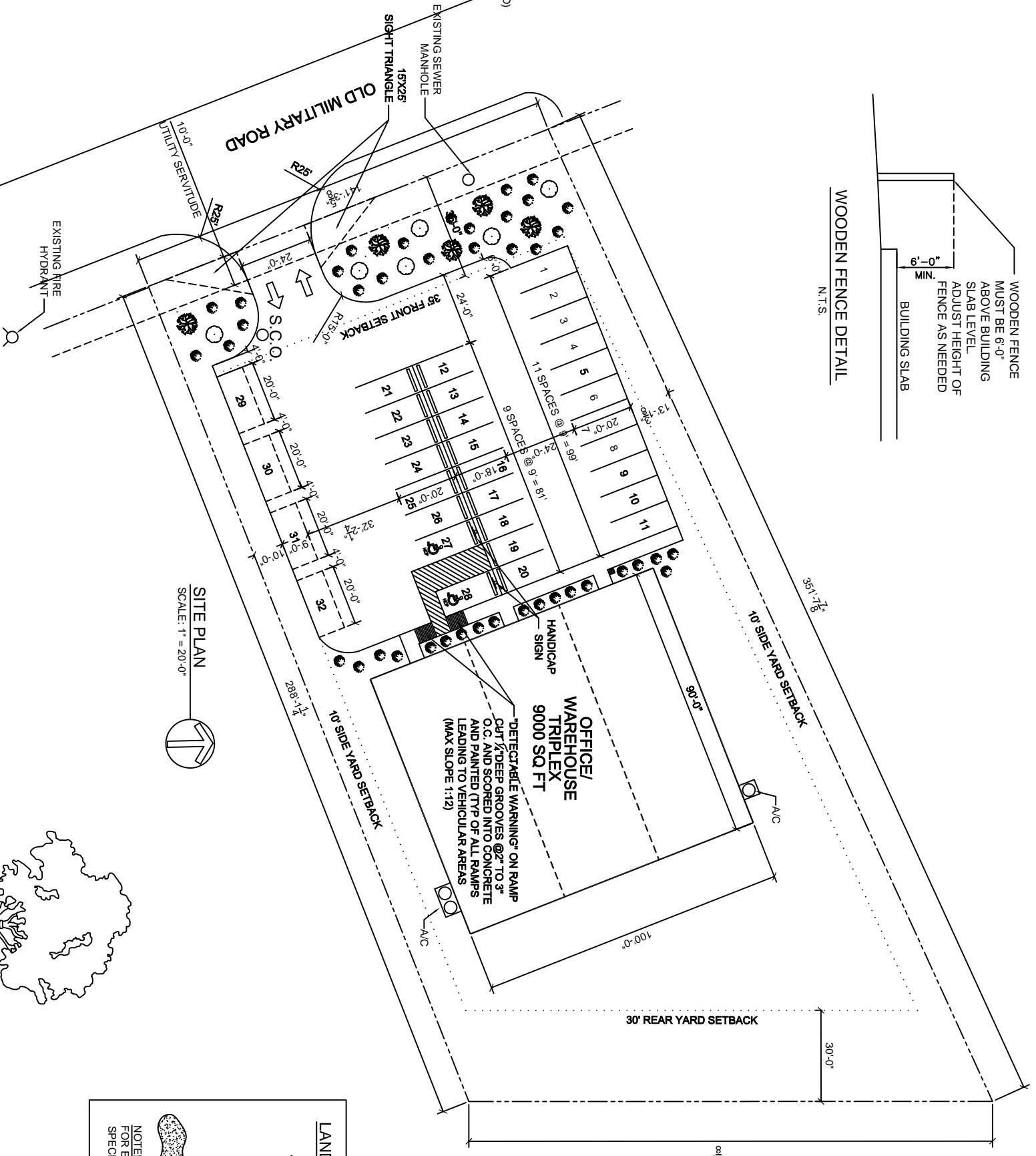
PARKING REQUIREMENTS
9,000 SQ. FT. TOTAL OFFICE / WAREHOUSE BUILDING AREA REQUIRES 1 PARKING SPACE / 300 SQ. FT. OF OFFICE BUILDING AREA TOTAL PARKING PROVIDED = 32 SPACES (2 HANDICAP)

SITE LIGHTING
EXTERIOR LIGHTING SHALL BE SHADED OR INWARDLY DIRECTED IN SUCH A MANNER SO THAT NO DIRECT LIGHTING OR GLARE BE CAST BEYOND THE PROPERTY LINE. THE INTENSITY OF SUCH LIGHTING SHALL NOT EXCEED ONE FOOT CANDLE AS MEASURED AT THE ABUTTING PROPERTY LINE.

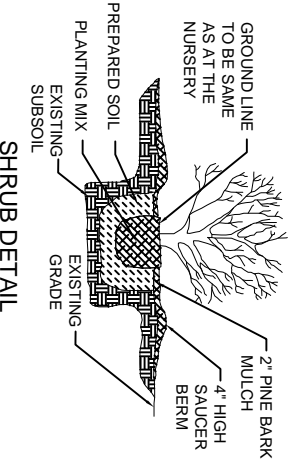
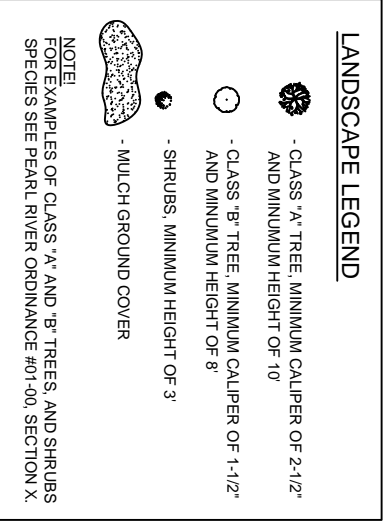
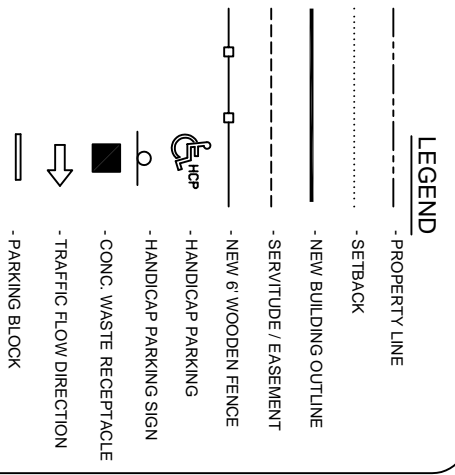
LANDSCAPING REQUIREMENTS
PARKING AREA: PER PEARL RIVER ORDINANCE #01-001, TWO CLASS 'B' TREES SHALL BE PROVIDED FOR EVERY EIGHT PARKING SPACES. THE LOCATION OF SAID TREES SHALL BE LOCATED ANYWHERE IN THE PARKING AREA OR ADJACENT TO THE PARKING AREA.
32 PARKING SPACES = 8 TOTAL CLASS 'B' TREES REQUIRED



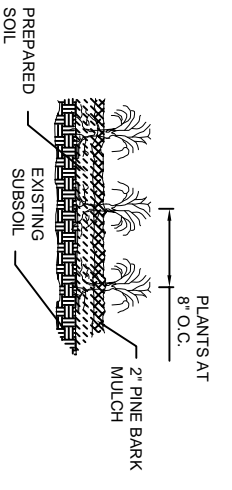
WOODEN FENCE DETAIL
N.T.S.



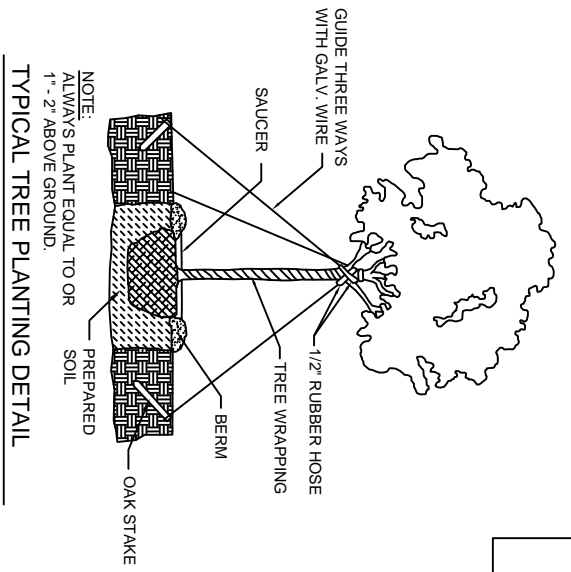
SITE PLAN
SCALE: 1" = 20'-0"



SHRUB DETAIL
N.T.S.



GROUND COVER DETAIL
N.T.S.



TYPICAL TREE PLANTING DETAIL
N.T.S.



VICINITY MAP
N.T.S.

REINE OFFICE/WAREHOUSE TRIPLEX

DAMMON ENGINEERING, INC.

1095 FLORIDA AVENUE 985-649-5832 SLIDELL, LA. 70458
DAMMONENGINEERING.COM

SITE PLAN

REINE CONSTRUCTION CORP.
OLD MILITARY ROAD
PEARL RIVER, LOUISIANA

SCALE: 1" = 20'

FILE:

JOB NO. 1879

DATE: 6-27-07

SHEET 1

C-2

OF 1