

4.6 PARKING AND PASSENGER LOADING ZONES.

4.6.1 GENERAL. ACCESSIBLE PARKING SPACES, INCLUDING PASSENGER LOADING ZONES, SHALL BE PROVIDED IN ACCORDANCE WITH THE FOLLOWING REQUIREMENTS:

4.6.2 MINIMUM SIZE. ACCESSIBLE PARKING SPACES SHALL BE AT LEAST 9'6" WIDE BY 18'0" DEEP. PASSENGER LOADING ZONES SHALL BE AT LEAST 20'0" WIDE BY 12'0" DEEP.

4.6.3 SURFACE. ACCESSIBLE PARKING SPACES AND PASSENGER LOADING ZONES SHALL BE SURFED WITH A FIRM, UNIFORM, SLIP-RESISTANT SURFACE.

4.6.4 SIGNAGE. ACCESSIBLE PARKING SPACES AND PASSENGER LOADING ZONES SHALL BE IDENTIFIED BY SIGNAGE IN ACCORDANCE WITH THE FOLLOWING REQUIREMENTS:

4.6.5 PAINTED CURB. THE CURB OF AN ACCESSIBLE PARKING SPACE OR PASSENGER LOADING ZONE SHALL BE PAINTED WITH A RED OR RED-ORANGE COLOR.

4.6.6 ADJACENT SURFACES. THE SURFACE OF THE SURFACES ADJACENT TO AN ACCESSIBLE PARKING SPACE OR PASSENGER LOADING ZONE SHALL BE AT LEAST 1/4" LOWER THAN THE SURFACE OF THE PARKING SPACE OR PASSENGER LOADING ZONE.

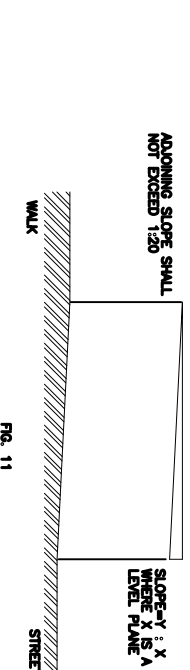
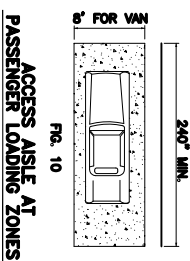
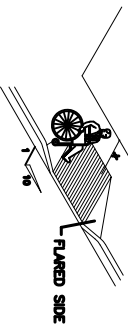


FIG. 10 ACCESS AISLE AT PASSENGER LOADING ZONES

FIG. 11 MEASUREMENT OF CURB RAMP SLOPES



4.7 CURB RAMPS.

4.7.1 GENERAL. CURB RAMPS SHALL BE PROVIDED IN ACCORDANCE WITH THE FOLLOWING REQUIREMENTS:

4.7.2 SLOPE. THE SLOPE OF A CURB RAMP SHALL BE AT LEAST 1:12.

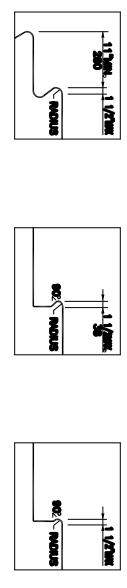
4.7.3 SURFACE. THE SURFACE OF A CURB RAMP SHALL BE SURFED WITH A FIRM, UNIFORM, SLIP-RESISTANT SURFACE.

4.7.4 WIDTH. THE WIDTH OF A CURB RAMP SHALL BE AT LEAST 4'0" WIDE.

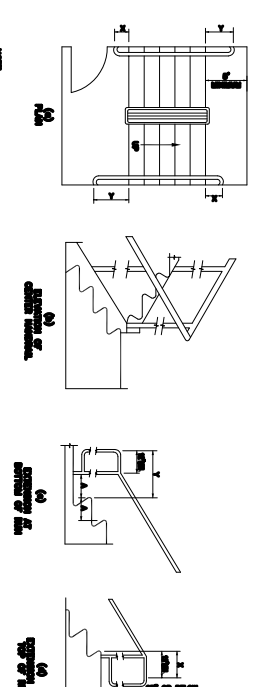
4.7.5 LENGTH. THE LENGTH OF A CURB RAMP SHALL BE AS SHORT AS PRACTICABLE.

4.7.6 TRANSITION. THE TRANSITION BETWEEN A CURB RAMP AND AN ADJACENT SURFACE SHALL BE AT LEAST 1/4" LOWER THAN THE SURFACE OF THE CURB RAMP.

EXAMPLES OF EDGE PROTECTION AND HANDRAIL EXTENSIONS



USABLE TREAD WIDTH AND EXAMPLES OF ACCEPTABLE NOSINGS



4.9 STAIRS.

4.9.1 GENERAL. STAIRS SHALL BE PROVIDED IN ACCORDANCE WITH THE FOLLOWING REQUIREMENTS:

4.9.2 MINIMUM WIDTH. THE MINIMUM CLEAR WIDTH OF A STAIR SHALL BE 4'0" (Clearance).

4.9.3 TREADS. THE TREADS OF A STAIR SHALL BE AT LEAST 11" WIDE.

4.9.4 RISES. THE RISES OF A STAIR SHALL BE AT LEAST 4" (Clearance).

4.9.5 NOSINGS. THE NOSINGS OF A STAIR SHALL BE AT LEAST 1/2" HIGH.

4.9.6 HANDRAILS. HANDRAILS SHALL BE PROVIDED ON BOTH SIDES OF A STAIR.

4.9.7 OPENINGS. OPENINGS IN STAIR TREADS SHALL BE AT LEAST 1/4" FROM THE EDGE.

4.9.8 SURFACE. THE SURFACE OF A STAIR SHALL BE SURFED WITH A FIRM, UNIFORM, SLIP-RESISTANT SURFACE.

STAIR HANDRAILS



4.10 ELEVATORS.

4.10.1 GENERAL. ELEVATORS SHALL BE PROVIDED IN ACCORDANCE WITH THE FOLLOWING REQUIREMENTS:

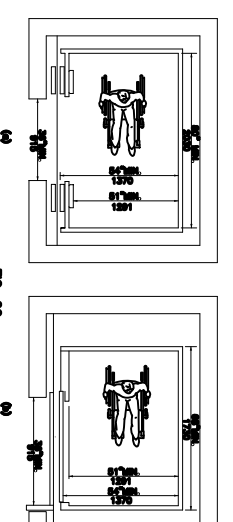
4.10.2 MINIMUM CLEARANCE. THE MINIMUM CLEARANCE AT THE ENTRANCE TO AN ELEVATOR SHALL BE 3'0" (Clearance).

4.10.3 HANDRAILS. HANDRAILS SHALL BE PROVIDED ON BOTH SIDES OF AN ELEVATOR.

4.10.4 CONTROLS. ELEVATOR CONTROLS SHALL BE PROVIDED AT A HEIGHT OF 48" TO 54" (Clearance).

4.10.5 SURFACE. THE SURFACE OF AN ELEVATOR SHALL BE SURFED WITH A FIRM, UNIFORM, SLIP-RESISTANT SURFACE.

MINIMUM DIMENSION OF ELEVATOR CARS



4.11 PLATFORM LIFTS (WHEELCHAIR LIFTS).

4.11.1 GENERAL. PLATFORM LIFTS SHALL BE PROVIDED IN ACCORDANCE WITH THE FOLLOWING REQUIREMENTS:

4.11.2 MINIMUM CLEARANCE. THE MINIMUM CLEARANCE AT THE ENTRANCE TO A PLATFORM LIFT SHALL BE 3'0" (Clearance).

4.11.3 SURFACE. THE SURFACE OF A PLATFORM LIFT SHALL BE SURFED WITH A FIRM, UNIFORM, SLIP-RESISTANT SURFACE.

4.11.4 CONTROLS. PLATFORM LIFT CONTROLS SHALL BE PROVIDED AT A HEIGHT OF 48" TO 54" (Clearance).

4.12 WINDOWS.

4.12.1 GENERAL. WINDOWS SHALL BE PROVIDED IN ACCORDANCE WITH THE FOLLOWING REQUIREMENTS:

4.12.2 MINIMUM CLEARANCE. THE MINIMUM CLEARANCE AT THE ENTRANCE TO A WINDOW SHALL BE 3'0" (Clearance).

4.12.3 SURFACE. THE SURFACE OF A WINDOW SHALL BE SURFED WITH A FIRM, UNIFORM, SLIP-RESISTANT SURFACE.

4.13 DOORS.

4.13.1 GENERAL. DOORS SHALL BE PROVIDED IN ACCORDANCE WITH THE FOLLOWING REQUIREMENTS:

4.13.2 MINIMUM CLEARANCE. THE MINIMUM CLEARANCE AT THE ENTRANCE TO A DOOR SHALL BE 3'0" (Clearance).

4.13.3 SURFACE. THE SURFACE OF A DOOR SHALL BE SURFED WITH A FIRM, UNIFORM, SLIP-RESISTANT SURFACE.

4.14 ENTRANCES.

4.14.1 GENERAL. ENTRANCES SHALL BE PROVIDED IN ACCORDANCE WITH THE FOLLOWING REQUIREMENTS:

4.14.2 MINIMUM CLEARANCE. THE MINIMUM CLEARANCE AT THE ENTRANCE TO A BUILDING SHALL BE 3'0" (Clearance).

4.14.3 SURFACE. THE SURFACE OF AN ENTRANCE SHALL BE SURFED WITH A FIRM, UNIFORM, SLIP-RESISTANT SURFACE.

4.15 DRINKING FOUNTAINS AND WATER COOLERS.

4.15.1 GENERAL. DRINKING FOUNTAINS AND WATER COOLERS SHALL BE PROVIDED IN ACCORDANCE WITH THE FOLLOWING REQUIREMENTS:

4.15.2 MINIMUM CLEARANCE. THE MINIMUM CLEARANCE AT THE ENTRANCE TO A DRINKING FOUNTAIN OR WATER COOLER SHALL BE 3'0" (Clearance).

4.15.3 SURFACE. THE SURFACE OF A DRINKING FOUNTAIN OR WATER COOLER SHALL BE SURFED WITH A FIRM, UNIFORM, SLIP-RESISTANT SURFACE.



DAMMON ENGINEERING, INC.
EMMETT DAMMON

ARCHITECT
ROBERT WILTSE

1095 FLORIDA AVENUE
SLIDELL, LA. 70458
985-649-5832

WWW.DAMMONENGINEERING.COM
EMAIL: DAMMONENG@BELL SOUTH.NET

ARCHITECTURE
ENGINEERING
STUDIES
PLANNING
INVESTIGATION
EXPERT WITNESS

NEW OFFICE/ WAREHOUSE

O'BRIEN / NORTH
SHORE FLOORING
DISTRIBUTORS
J.W. SMITH AVE.
SLIDELL, LA

HANDICAP NOTES

REV: 1-17-08
SCALE: AS NOTED
JOB#: 1912
DATE: 1-4-08
SHEET
H-1
OF