



DAMMON ENGINEERING, INC.
EMMETT DAMMON

ARCHITECT
ROBERT WILTSE

1095 FLORIDA AVENUE
 SLIDELL, LA. 70458
 983-649-5832

WEBSITE:
 WWW.DAMMONENGINEERING.COM
 EMAIL:
 DAMMONENG@BELL SOUTH.NET

ARCHITECTURE
 ENGINEERING
 STUDIES
 PLANNING
 INVESTIGATION
 EXPERT WITNESS

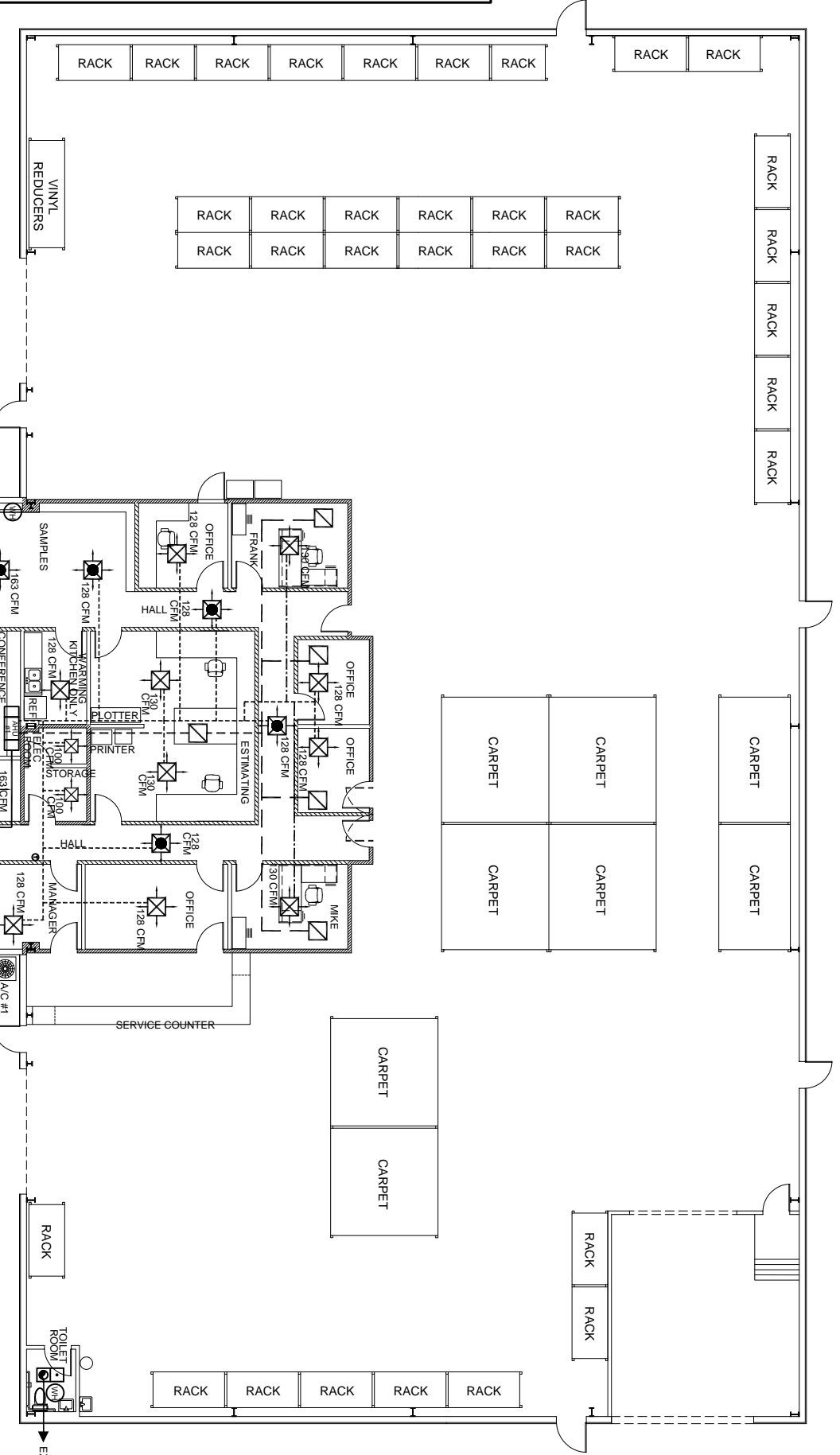
**NEW OFFICE/
 WAREHOUSE**

O'BRIEN / NORTH
 SHORE FLOORING
 DISTRIBUTORS
 J.F. SMITH AVE.
 SLIDELL, LA

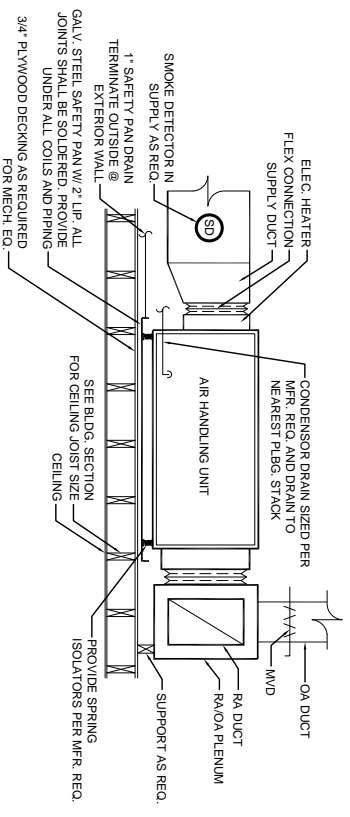
**MECHANICAL
 PLAN**

REV: 1-17-08
 SCALE: AS NOTED
 JOB#: 1912
 DATE: 1-4-08

SHEET
M-1
 OF



- HVAC NOTES**
1. CONCEALED DUCTWORK TO BE UL-181 CLASS 1, FIBERGLASS DUCTBOARD. DUCTS SHALL BE SIZED TO LIMIT MAIN DUCTS TO 1000 CFM & SECONDARY DUCTS TO 800 CFM. TO BE INSTALLED PER SMACNA STANDARDS.
 2. EXPOSED DUCTWORK TO BE GALVANIZED SHEET METAL PER SMACNA STANDARDS. INSULATION.
 3. ROUND FLEXIBLE DUCT TO BE UL-181, CLASS 1, AIR DUCT MATERIALS.
 4. DUCT SIZES SHOWN ARE CLEAR INSIDE DIMENSIONS.
 5. IN ALL SYSTEMS OVER 2000 CFM AND LESS THAN 15,000 CFM, SMOKE DETECTORS SHALL BE INSTALLED IN ACCORDANCE WITH NFPA 72E IN THE RETURN DUCT DOWNSTREAM OF THE AIR HANDLING UNIT AND ALL FILTERS TO AUTOMATICALLY STOP THE FAN.
 6. PROVIDE UL LISTED 125° F FIRE-RATED IN-RETURN AIR OF EACH SYSTEM UNDER 2000 CFM TO SHUT DOWN THE FAN IN THE EVENT OF FIRE.
 7. PROVIDE UL RATED FIRE DAMPERS WHERE REQUIRED AT ALL DUCT PENETRATIONS OF FIRE-RATED ASSEMBLIES AND WHERE REQUIRED BY CODE, INCLUDING OUTSIDE AIR INTAKES.
 8. CONDENSATE DRAINS TO BE PVC PIPE RUN TO PLUMBERS P-TRAP WITHIN FIVE FEET OF AIR HANDLING UNITS.
 9. ALL AIR HANDLING SYSTEMS TO BE BALANCED TO ASSURE PROPER AIR FLOWS PER PLANS.
 10. ALL THERMOSTATS TO BE AUTOMATIC CHANGEOVER WITH HEAT SWITCH.
 11. EXHAUST FAN EQUAL TO BROAN MODEL NO. 100CF, OR EQUAL. FAN SHALL BE CONTROLLED BY A SWITCH ON THE WALL IN THE SAME LOCATION AS LIGHT SWITCHES). PROVIDE BACK DRAFT DAMPER.
 12. PROVIDE AND INSTALL WATER PROOF GRILLE VENT IN PROPER ROOF LOCATION FOR PLUMBING EXTURE EXHAUST.
 13. ALL SUPPLY AIR VENTS SHALL BE EQUIPPED WITH AIR CONTROL DAMPERS.
 14. LOCATE OUTDOOR UNITS AS SHOWN ON ARCH DWGS.
 15. REFRIGERANT LINES SHALL BE SIZED BY UNIT MANUFACTURER AND INSTALLED ACCORDING TO MANUFACTURER'S INSTRUCTIONS.
 16. FRESH AIR SHALL BE SUPPLIED TO EACH AIR HANDLER THROUGH EXTERIOR WALL DUCT SUPPLIED WITH A CONTROL DAMPER.
 17. INSTALL FIRE DAMPER WHERE S.A. & R.A. DUCTS PENETRATE 1 HOUR RATED CEILING.
 18. ALL ELECTRICAL, MECHANICAL, AND PLUMBING PENETRATING FIRE WALLS SHALL BE FIRE CAULKED. (PENETRATIONS THROUGH RATED CONSTRUCTION SHALL BE SEALED WITH A MATERIAL CAPABLE OF PREVENTING THE PASSAGE OF FLAMES AND HOT GASES WHEN TESTED IN ACCORDANCE WITH ASTM E-119).
 19. DRAWN DIAGRAMMATICALLY.



TYPICAL HORIZONTAL AHU DETAIL
 SCALE: N.T.S.

MECHANICAL PLAN
 SCALE: 1/8"=1'-0"



EXHAUST FAN SCHEDULE

LOC	CFM	VOLTAGE	TYPE	MANF.
TOILETS/SEE DWG	120		VENTILIGHT	-

A/C SPLIT UNIT SCHEDULE

UNIT	TOTAL BTU	CFM	O.A.	HEAT (KW)	ELECTRICAL	COMMENTS
1	60,000	2,000	200	15	208V/3Ø	PL-1,3 CARRIER
2	60,000	2,000	200	15	208V/3Ø	PL-1,3

- LEGEND**
- SUPPLY AIR W/ SMOKE DAMPER
 - SUPPLY AIR
 - RETURN AIR
 - EXHAUST FAN
 - A/C UNIT
 - THERMOSTAT
 - SUPPLY AIR AHU #1 ABOVE DECK
 - SUPPLY AIR AHU #1 DROP DOWN
 - SUPPLY AIR AHU #2 ABOVE DECK
 - OUTSIDE AIR
 - RETURN AIR ABOVE DECK
 - RETURN AIR DROP DOWN