

**DAMMON ENGINEERING, INC.**

CHIEF ENGINEER  
EMMETT DAMMON, P.E.

CHIEF ARCHITECT  
ROBERT WILTSE

1095 FLORIDA AVENUE  
SLIDELL, LA. 70458  
OFFICE: 985-649-5832  
FAX: 985-641-5950

WEBSITE:  
WWW.DAMMONENGINEERING.COM

EMAIL:  
DAMMONENG@BELLSOUTH.NET

ARCHITECTURE  
ENGINEERING  
STUDIES  
PLANNING  
INVESTIGATION  
EXPERT WITNESS

OFFICE RENOVATION/  
ADDITION

M NATAL CONTRACTORS, INC.  
394 VOTERS RD.  
SLIDELL, LA

POWER PLAN

REV:

SCALE: AS NOTED

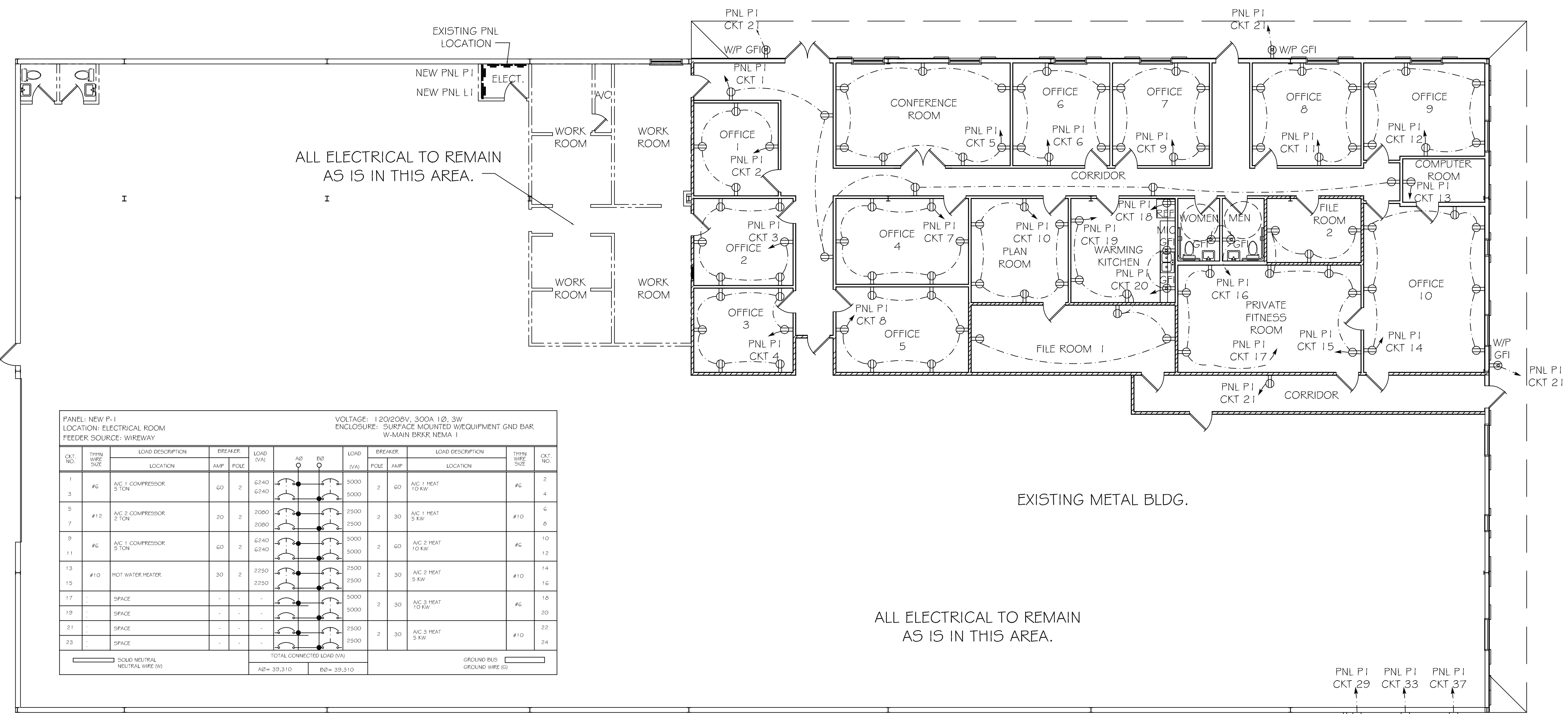
JOB#: 1956

DATE: 07-16-08

SHEET 8

E-1

OF 12

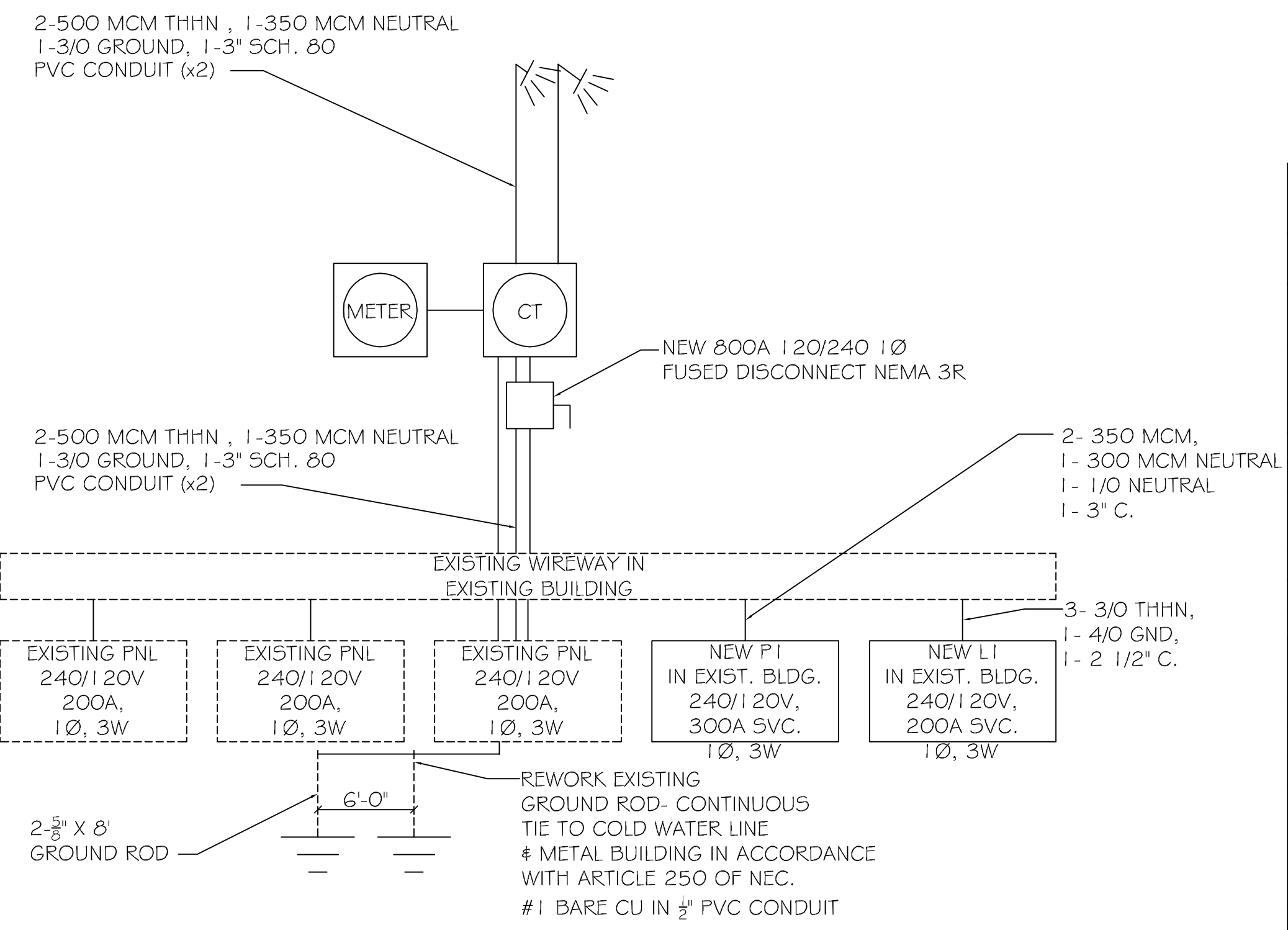


PANEL: NEW P-1  
LOCATION: ELECTRICAL ROOM  
FEEDER SOURCE: WIREWAY

VOLTAGE: 120/208V, 300A 1Ø, 3W  
ENCLOSURE: SURFACE MOUNTED W/EQUIPMENT GND BAR  
W-MAIN BRKR NEMA 1

CKT. NO.	THIN WIRE SIZE	LOAD DESCRIPTION	BREAKER	LOAD (VA)	AD	BD	LOAD (VA)	BREAKER	LOAD DESCRIPTION	THIN WIRE SIZE	CKT. NO.
1	#6	A/C 1 COMPRESSOR 5 TON	60 2	6240	6240	3000	2	60	A/C 1 HEAT 10 KW	#6	2
3	#6	A/C 2 COMPRESSOR 5 TON	20 2	2080	2080	2500	2	30	A/C 1 HEAT 5 KW	#10	6
5	#6	A/C 3 COMPRESSOR 5 TON	60 2	6240	6240	3000	2	60	A/C 2 HEAT 10 KW	#6	8
7	#10	HOT WATER HEATER	30 2	2250	2250	2500	2	30	A/C 2 HEAT 5 KW	#10	10
9	-	SPACE	-	-	-	5000	2	30	A/C 3 HEAT 10 KW	#6	12
11	-	SPACE	-	-	-	5000	2	30	A/C 3 HEAT 10 KW	#10	14
13	-	SPACE	-	-	-	5000	2	30	A/C 3 HEAT 10 KW	#10	16
15	-	SPACE	-	-	-	5000	2	30	A/C 3 HEAT 10 KW	#10	18
17	-	SPACE	-	-	-	5000	2	30	A/C 3 HEAT 10 KW	#10	20
19	-	SPACE	-	-	-	5000	2	30	A/C 3 HEAT 10 KW	#10	22
21	-	SPACE	-	-	-	5000	2	30	A/C 3 HEAT 10 KW	#10	24
23	-	SPACE	-	-	-	5000	2	30	A/C 3 HEAT 10 KW	#10	26
				TOTAL CONNECTED LOAD (VA)		AD=39,310	BD=39,310				

POWER PLAN  
SCALE: 1/8" = 1'-0"



ELECTRICAL ONE LINE DIAGRAM  
N.T.S.

PANEL: NEW L1  
LOCATION: ELECTRICAL ROOM  
FEEDER SOURCE: WIREWAY

VOLTAGE: 120/208V, 200A 1Ø, 3W  
ENCLOSURE: SURFACE MOUNTED W/EQUIPMENT GND BAR

CKT. NO.	THIN WIRE SIZE	LOAD DESCRIPTION	BREAKER	LOAD (VA)	AD	BD	LOAD (VA)	BREAKER	LOAD DESCRIPTION	THIN WIRE SIZE	CKT. NO.
1	2 #12	CORRIDOR RECEPTACLES	20 1	1000	1000	1000	1	20	OFFICE 1 RECEPTACLES	2 #12	2
2	2 #12	OFFICE 2 RECEPTACLES	20 1	800	800	1000	1	20	OFFICE 2 RECEPTACLES	2 #12	4
3	2 #12	CONFERENCE ROOM RECEPTACLES	20 1	1200	1400	1000	1	20	OFFICE 3 RECEPTACLES	2 #12	6
4	2 #12	OFFICE 4 RECEPTACLES	20 1	1200	1200	1000	1	20	OFFICE 4 RECEPTACLES	2 #12	8
5	2 #12	OFFICE 5 RECEPTACLES	20 1	800	1200	1000	1	20	OFFICE 5 RECEPTACLES	2 #12	10
6	2 #12	OFFICE 6 RECEPTACLES	20 1	800	800	1000	1	20	OFFICE 6 RECEPTACLES	2 #12	12
7	2 #12	OFFICE 7 RECEPTACLES	20 1	800	800	1000	1	20	OFFICE 7 RECEPTACLES	2 #12	14
8	2 #12	OFFICE 8 RECEPTACLES	20 1	800	800	1000	1	20	OFFICE 8 RECEPTACLES	2 #12	16
9	2 #12	OFFICE 9 RECEPTACLES	20 1	800	800	1000	1	20	OFFICE 9 RECEPTACLES	2 #12	18
10	2 #12	OFFICE 10 RECEPTACLES	20 1	800	800	1000	1	20	OFFICE 10 RECEPTACLES	2 #12	20
11	2 #12	OFFICE 11 RECEPTACLES	20 1	800	800	1000	1	20	OFFICE 11 RECEPTACLES	2 #12	22
12	2 #12	OFFICE 12 RECEPTACLES	20 1	800	800	1000	1	20	OFFICE 12 RECEPTACLES	2 #12	24
13	2 #12	OFFICE 13 RECEPTACLES	20 1	800	800	1000	1	20	OFFICE 13 RECEPTACLES	2 #12	26
14	2 #12	OFFICE 14 RECEPTACLES	20 1	800	800	1000	1	20	OFFICE 14 RECEPTACLES	2 #12	28
15	2 #12	OFFICE 15 RECEPTACLES	20 1	800	800	1000	1	20	OFFICE 15 RECEPTACLES	2 #12	30
16	2 #12	OFFICE 16 RECEPTACLES	20 1	800	800	1000	1	20	OFFICE 16 RECEPTACLES	2 #12	32
17	2 #12	OFFICE 17 RECEPTACLES	20 1	800	800	1000	1	20	OFFICE 17 RECEPTACLES	2 #12	34
18	2 #12	OFFICE 18 RECEPTACLES	20 1	800	800	1000	1	20	OFFICE 18 RECEPTACLES	2 #12	36
19	2 #12	OFFICE 19 RECEPTACLES	20 1	800	800	1000	1	20	OFFICE 19 RECEPTACLES	2 #12	38
20	2 #12	OFFICE 20 RECEPTACLES	20 1	800	800	1000	1	20	OFFICE 20 RECEPTACLES	2 #12	40
21	2 #12	OFFICE 21 RECEPTACLES	20 1	800	800	1000	1	20	OFFICE 21 RECEPTACLES	2 #12	42
22	2 #12	OFFICE 22 RECEPTACLES	20 1	800	800	1000	1	20	OFFICE 22 RECEPTACLES	2 #12	44
23	2 #12	OFFICE 23 RECEPTACLES	20 1	800	800	1000	1	20	OFFICE 23 RECEPTACLES	2 #12	46
24	2 #12	OFFICE 24 RECEPTACLES	20 1	800	800	1000	1	20	OFFICE 24 RECEPTACLES	2 #12	48
25	2 #12	OFFICE 25 RECEPTACLES	20 1	800	800	1000	1	20	OFFICE 25 RECEPTACLES	2 #12	50
26	2 #12	OFFICE 26 RECEPTACLES	20 1	800	800	1000	1	20	OFFICE 26 RECEPTACLES	2 #12	52
27	2 #12	OFFICE 27 RECEPTACLES	20 1	800	800	1000	1	20	OFFICE 27 RECEPTACLES	2 #12	54
28	2 #12	OFFICE 28 RECEPTACLES	20 1	800	800	1000	1	20	OFFICE 28 RECEPTACLES	2 #12	56
29	2 #12	OFFICE 29 RECEPTACLES	20 1	800	800	1000	1	20	OFFICE 29 RECEPTACLES	2 #12	58
30	2 #12	OFFICE 30 RECEPTACLES	20 1	800	800	1000	1	20	OFFICE 30 RECEPTACLES	2 #12	60
31	2 #12	OFFICE 31 RECEPTACLES	20 1	800	800	1000	1	20	OFFICE 31 RECEPTACLES	2 #12	62
32	2 #12	OFFICE 32 RECEPTACLES	20 1	800	800	1000	1	20	OFFICE 32 RECEPTACLES	2 #12	64
33	2 #12	OFFICE 33 RECEPTACLES	20 1	800	800	1000	1	20	OFFICE 33 RECEPTACLES	2 #12	66
34	2 #12	OFFICE 34 RECEPTACLES	20 1	800	800	1000	1	20	OFFICE 34 RECEPTACLES	2 #12	68
35	2 #12	OFFICE 35 RECEPTACLES	20 1	800	800	1000	1	20	OFFICE 35 RECEPTACLES	2 #12	70
36	2 #12	OFFICE 36 RECEPTACLES	20 1	800	800	1000	1	20	OFFICE 36 RECEPTACLES	2 #12	72
37	2 #12	OFFICE 37 RECEPTACLES	20 1	800	800	1000	1	20	OFFICE 37 RECEPTACLES	2 #12	74
38	2 #12	OFFICE 38 RECEPTACLES	20 1	800	800	1000	1	20	OFFICE 38 RECEPTACLES	2 #12	76
39	2 #12	OFFICE 39 RECEPTACLES	20 1	800	800	1000	1	20	OFFICE 39 RECEPTACLES	2 #12	78
40	2 #12	OFFICE 40 RECEPTACLES	20 1	800	800	1000	1	20	OFFICE 40 RECEPTACLES	2 #12	80
41	2 #12	OFFICE 41 RECEPTACLES	20 1	800	800	1000	1	20	OFFICE 41 RECEPTACLES	2 #12	82
42	2 #12	OFFICE 42 RECEPTACLES	20 1	800	800	1000	1	20	OFFICE 42 RECEPTACLES	2 #12	84
				TOTAL CONNECTED LOAD (VA)		AD=19,640	BD=15,720				

LEGEND

- - 2 X 4 FLUORESCENT FIXTURE
- ⊞ - BROADWAY LIGHT
- ⊞ - CEILING MOUNTED FIXTURE
- ⊞ - EXTERIOR WALL SCONCE FIXTURE W/ 90 MINUTE BACKUP
- ⊞ - VENT/ LIGHT
- ⊞ - EXIT/ EMERGENCY LIGHT W/ 90 MIN. BATTERY BACKUP
- ⊞ - EMERGENCY LIGHT W/ 90 MIN. BATTERY BACKUP
- ⊞ - 1 HR. RATED WALL
- ⊞ - SWITCH
- ⊞ - 3 WAY SWITCH
- ⊞ - DUPLX RECEPTACLE
- ⊞ - GFI RECEPTACLE
- ⊞ - WEATHERPROOF GFI RECEPTACLE
- ⊞ - QUAD RECEPTACLE
- ⊞ - DISCONNECT SWITCH
- ⊞ - JUNCTION BOX
- ⊞ - THERMOSTAT
- ⊞ - 220 OUTLET
- ⊞ - SMOKE DETECTOR
- ⊞ - CABLE TV OUTLET
- ⊞ - PHONE
- ⊞ - HOT WATER HEATER WITH DISCONNECT

PARTIAL POWER PLAN  
SCALE: 1/8" = 1'-0"

