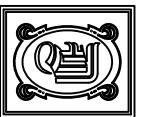
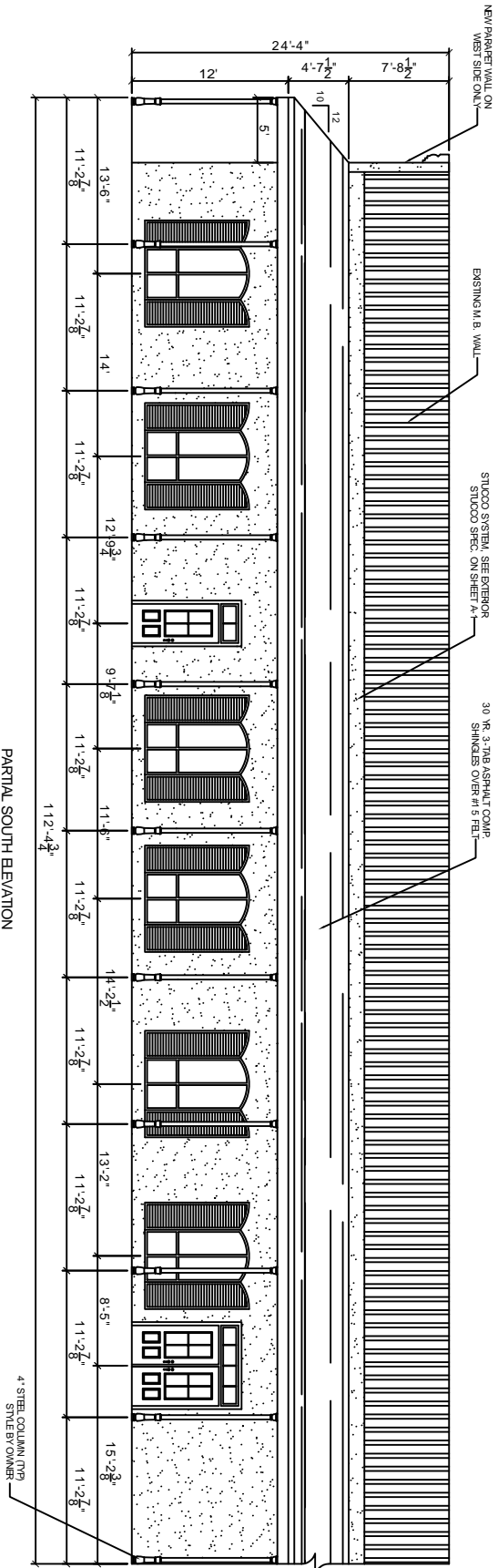
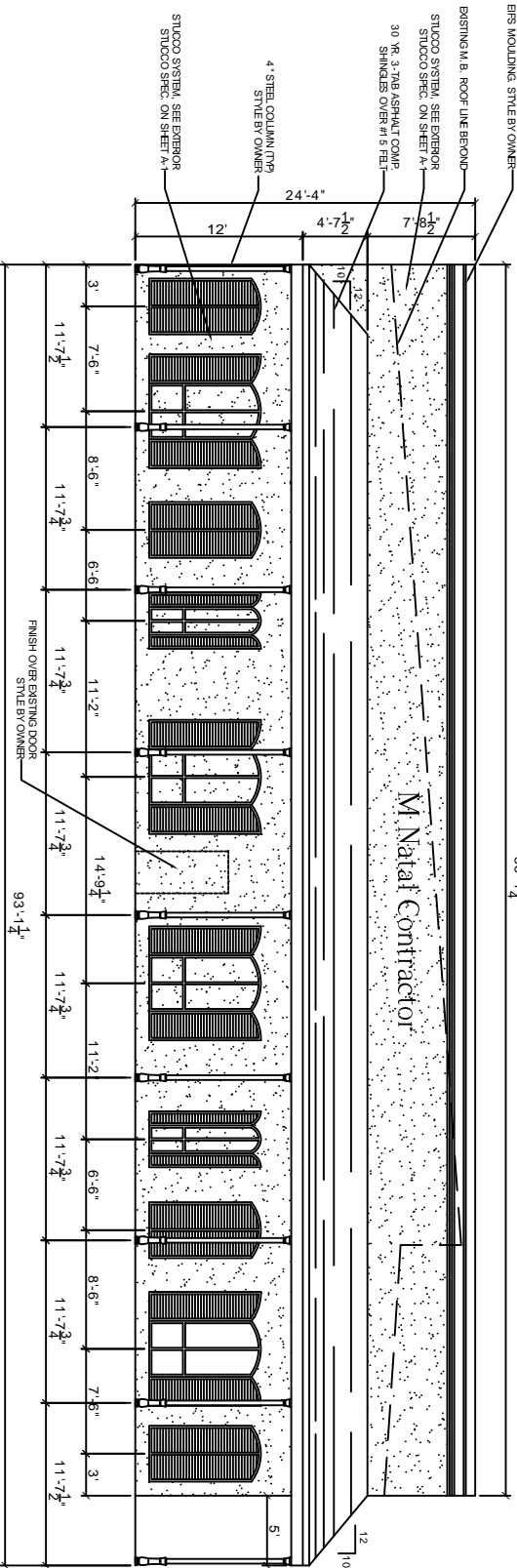


88'-1 $\frac{1}{2}$ "



DAMMON
ENGINEERING, INC.
CHIEF ENGINEER
EMMETT
DAMMON, P.E.

1105 BORDO AVENUE
SUITE 101, 70458
OFFICE: 985-649-5832
FAX: 985-641-5950

WWW.DAMMONENGINEERING.COM
WEBSITE
B.M.L.
DAMMON@DAMMONENGINEERING.COM

ARCHITECTURE
ENGINEERING
STUDIOS
PLANNING
INVESTIGATION
EXPERI WINNERS

OFFICE
RENOVATION /
ADDITION

M. NATAL
CONTRACTORS, INC.
394 VOYERS ROAD
SUDBELL, LA

EXTERIOR
ELEVATIONS

REV:	
SCALE:	
JOB#:	1956
DATE:	5-30-08
SHEET:	2

A-2

OF 2