

DAMMON
ENGINEERING, INC.

CHIEF ENGINEER
EWMETT
DAMMON, P.E.
CHIEF ARCHITECT
ROBERT
MILTSE

1095 FLORIDA AVENUE
SLIDELL, LA. 70458
OFFICE: 985-649-5632
FAX: 985-641-5950

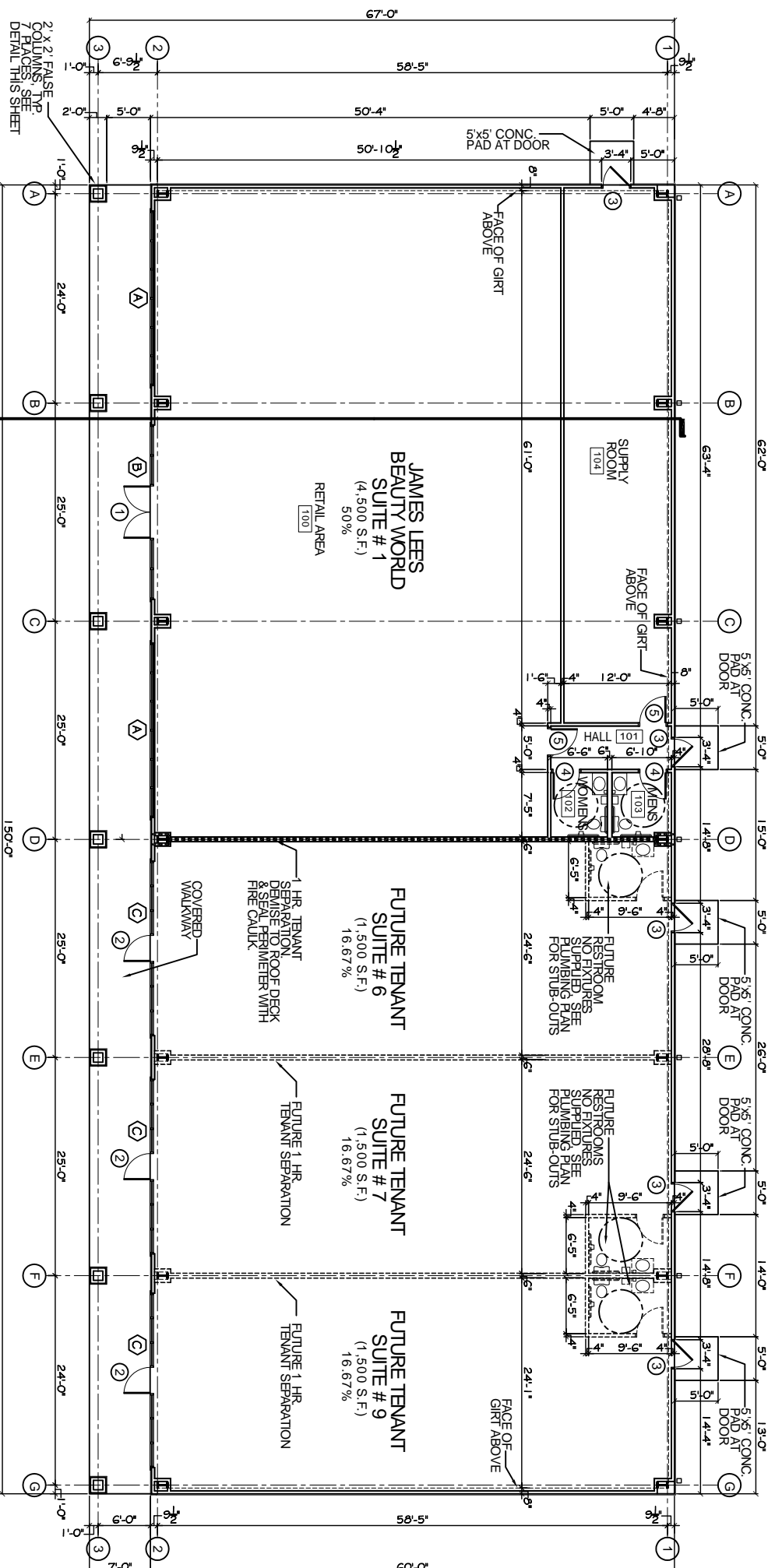
WEBSITE:
WWW.DAMMONENGINEERING.COM
EMAIL:
DAMMONENG@BLSOUTH.NET

ARCHITECTURE
ENGINEERING
STUDIES
PLANNING
INVESTIGATION
EXPERT WITNESS

J D PLAZA
345 GAUSE
BOULEVARD
WEST
SUDELL, LA

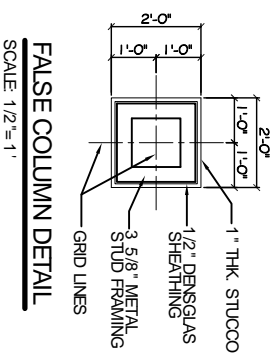
FLOOR
PLAN

REV:	
SCALE:	AS NOTED
JOB#:	2037
DATE:	10-01-09
SHEET	9



FLOOR PLAN
SCALE 1/8" = 1'

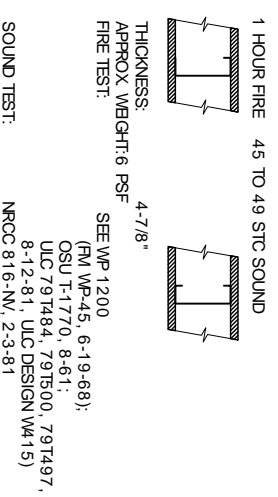
- LEGEND**
- ▬ - 1 HR. FIRE-RATED TENANT SEPARATION WALL
 - - - - - FUTURE INSTALLATIONS



GA FILE NO. WP 1072 GENERIC

ONE LAYER 5/8" TYPE X GYPSUM WALLBOARD OR GYPSUM VENEER BASE APPLIED PARALLEL OR AT RIGHT ANGLES TO EACH SIDE OF 3-5/8" STEEL STUDS 24" O.C. WITH 1" TYPE S DRYWALL SCREWS 8" O.C. AT VERTICAL JOINTS AND 12" O.C. AT FLOOR AND CEILING RUNNERS AND INTERMEDIATE STUDS.

JOINTS STAGGERED 2.4" ON EACH SIDE AND ON OPPOSITE SIDES. SOUND TESTED WITH 3-12" GLASS FIBER FRICTION RTN IN STUD SPACE. (NON-LOAD BEARING)



UL FIRE WALL DETAIL
NTS