

DAMMON
ENGINEERING, INC.

CHIEF ENGINEER
EMMETT
DAMMON, P.E.

CHIEF ARCHITECT
ROBERT
WILTSE

1095 FLORIDA AVENUE
SLIDELL, LA. 70458
OFFICE: 985-649-5832
FAX: 985-641-5950

WEBSITE:
WWW.DAMMONENGINEERING.COM

EMAIL:
DAMMONENG@BELLSOUTH.NET

ARCHITECTURE

ENGINEERING

STUDIES

PLANNING

INVESTIGATION

EXPERT WITNESS

JAMES
LEE
CENTER
HWY 190 WEST
SLIDELL, LA

EXTERIOR
ELEVATIONS

REV:

SCALE: AS NOTED

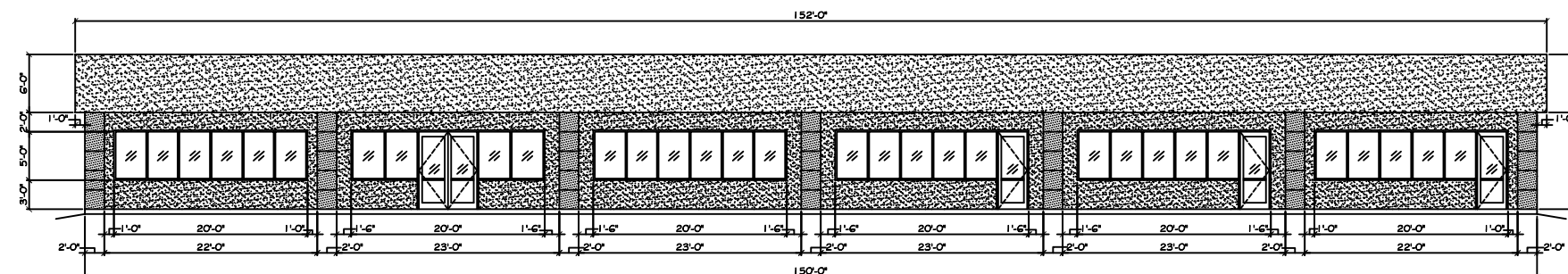
JOB#: 2037

DATE: 07-08-09

SHEET

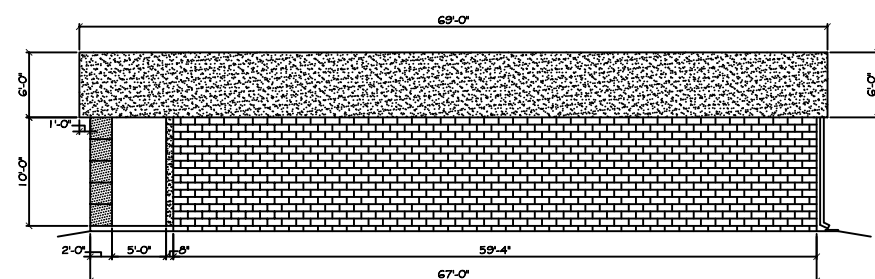
A-3

OF



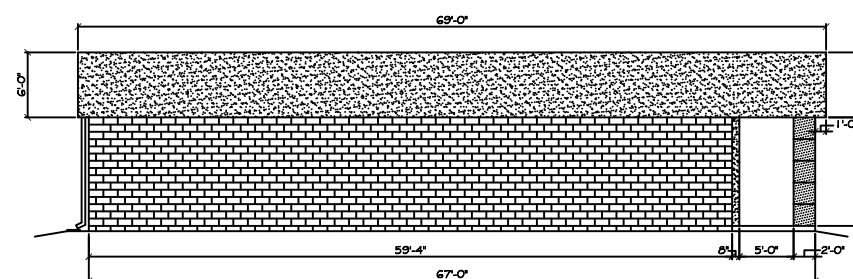
NORTH ELEVATION

SCALE: 1/8"=1'



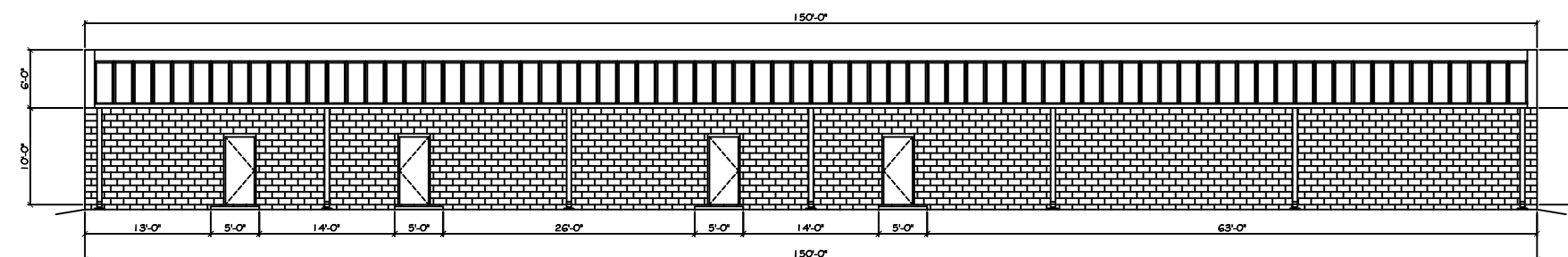
WEST ELEVATION

SCALE: 1/8"=1'



EAST ELEVATION

SCALE: 1/8"=1'



SOUTH ELEVATION

SCALE: 1/8"=1'