

**DAMMON
ENGINEERING, INC.**

CHIEF ENGINEER
EMMETT
DAMMON, P.E.

CHIEF ARCHITECT
ROBERT
WILTSE

1095 FLORIDA AVENUE
SLIDELL, LA. 70458
OFFICE: 985-649-5832
FAX: 985-641-5950

WEBSITE:
WWW.DAMMONENGINEERING.COM

EMAIL:
DAMMONENG@BELLSOUTH.NET

ARCHITECTURE

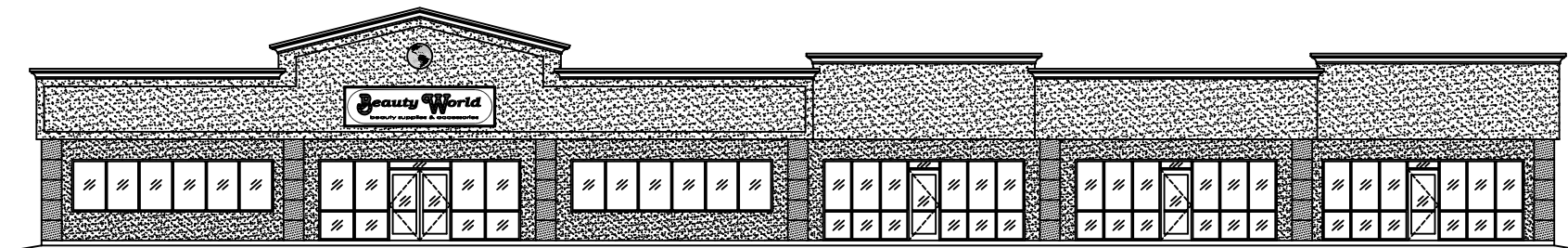
ENGINEERING

STUDIES

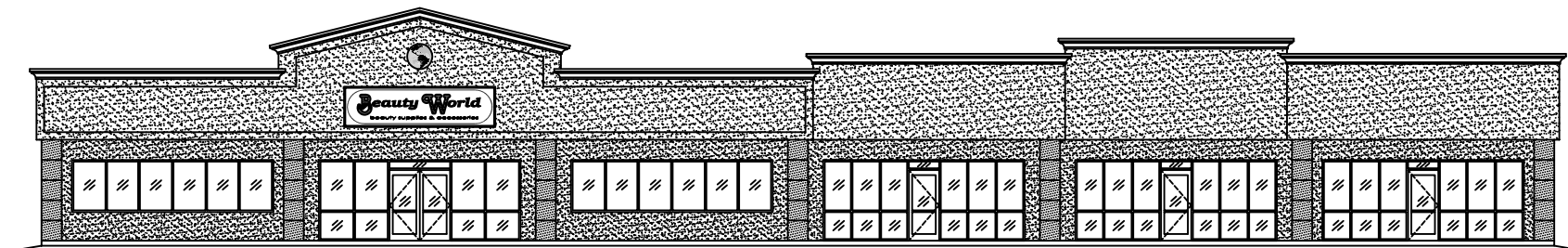
PLANNING

INVESTIGATION

EXPERT WITNESS



NORTH ELEVATION (PREVIOUSLY APPROVED)
SCALE: 1/8"=1'



NORTH ELEVATION (PER CHUCK)
SCALE: 1/8"=1'

J D PLAZA
345 GAUSE
BOULEVARD
WEST
SLIDELL, LA

EXTERIOR
ELEVATIONS

REV:

SCALE: AS NOTED

JOB#: 2037

DATE: 09-11-09

SHEET

A-3

OF