

**DAMMON
ENGINEERING, INC.**

CHIEF ENGINEER
EMMETT
DAMMON, P.E.

CHIEF ARCHITECT
ROBERT
WILTSE

1095 FLORIDA AVENUE
SLIDELL, LA. 70458
OFFICE: 985-649-5832
FAX: 985-641-5950

WEBSITE:
WWW.DAMMONENGINEERING.COM

EMAIL:
DAMMONENG@BELLSOUTH.NET

ARCHITECTURE

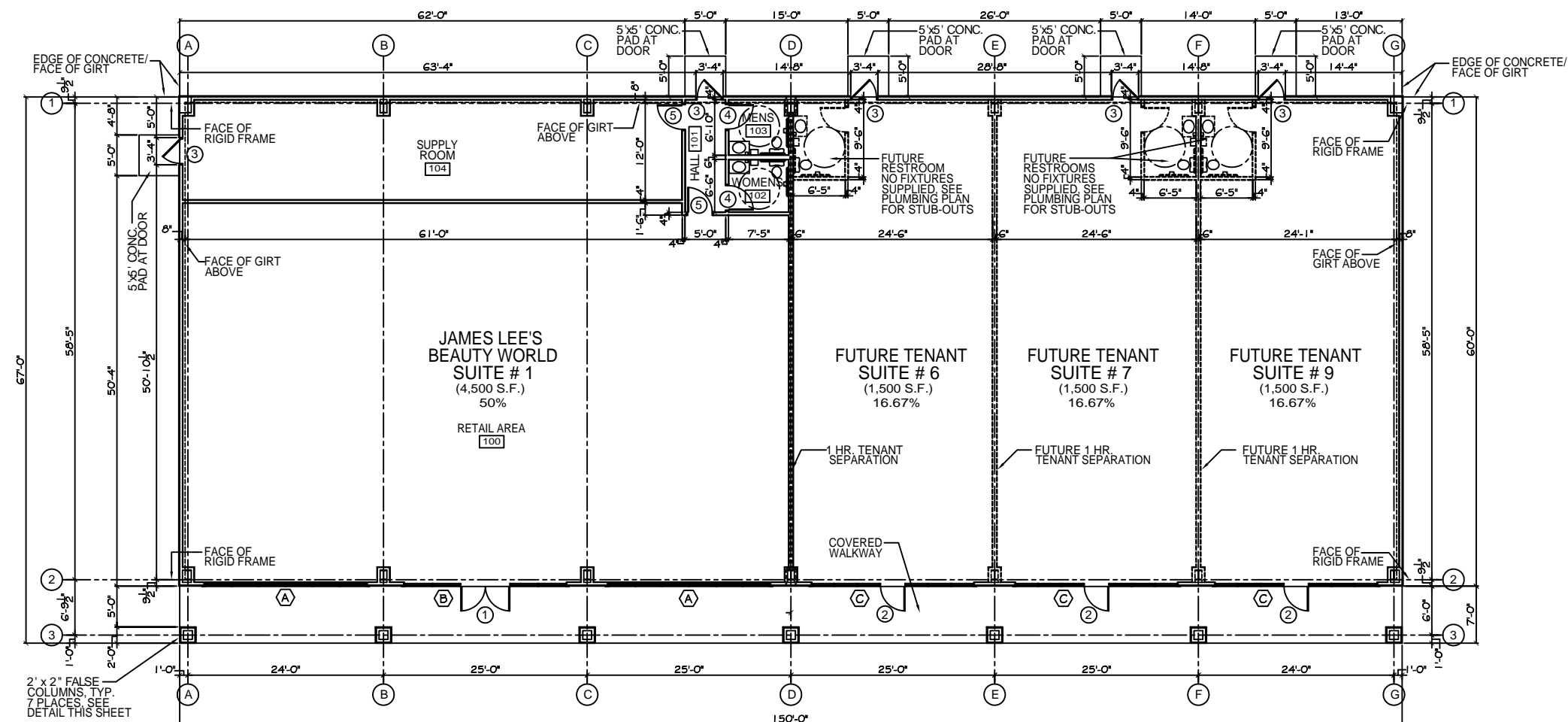
ENGINEERING

STUDIES

PLANNING

INVESTIGATION

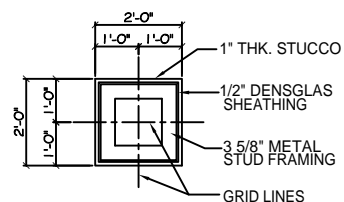
EXPERT WITNESS



FLOOR PLAN
SCALE: 1/8"=1'

LEGEND

- 1 HR. FIRE-RATED TENANT SEPERATION WALL
- FUTURE INSTALLATIONS



GA FILE NO. WP 1072 GENERIC

ONE LAYER 5/8" TYPE X GYPSUM WALLBOARD OR GYPSUM VENEER BASE APPLIED PARALLEL OR AT RIGHT ANGLES TO EACH SIDE OF 3-5/8" STEEL STUDS 24" O.C. WITH 1" TYPE S DRYWALL SCREWS 8" O.C. AT VERTICAL JOINTS AND 12" O.C. AT FLOOR AND CEILING RUNNERS AND INTERMEDIATE STUDS.

JOINTS STAGGERED 24" ON EACH SIDE AND ON OPPOSITE SIDES. SOUND TESTED WITH 3-12" GLASS FIBER FRICTION FIT IN STUD SPACE. (NON-LOAD BEARING)

UL FIRE WALL DETAIL

NTS

1 HOUR FIRE 45 TO 49 STC SOUND



THICKNESS:
APPROX. WEIGHT: 6 PSF
FIRE TEST:

4-7/8"

SOUND TEST:

SEE WP 1200
(FM WP-45, 6-19-68);
OSU T-1770, 8-61;
ULC 79T484, 79T500, 79T497,
8-12-81, ULC DESIGN W415)
NRCC 816-NV, 2-3-81

REV:

SCALE: AS NOTED

JOB#: 2037

DATE: 09-22-09

SHEET

A-1

OF

PRELIMINARY (NOT FOR CONSTRUCTION)