

DAMMON
ENGINEERING, INC.

CHIEF ENGINEER
EMMETT
DAMMON, P.E.

CHIEF ARCHITECT
ROBERT
WILTSE

1095 FLORIDA AVENUE
SLIDELL, LA. 70458
OFFICE: 985-649-5832
FAX: 985-641-5950

WEBSITE:
WWW.DAMMONENGINEERING.COM

EMAIL:
DAMMONENG@BELLSOUTH.NET

ARCHITECTURE

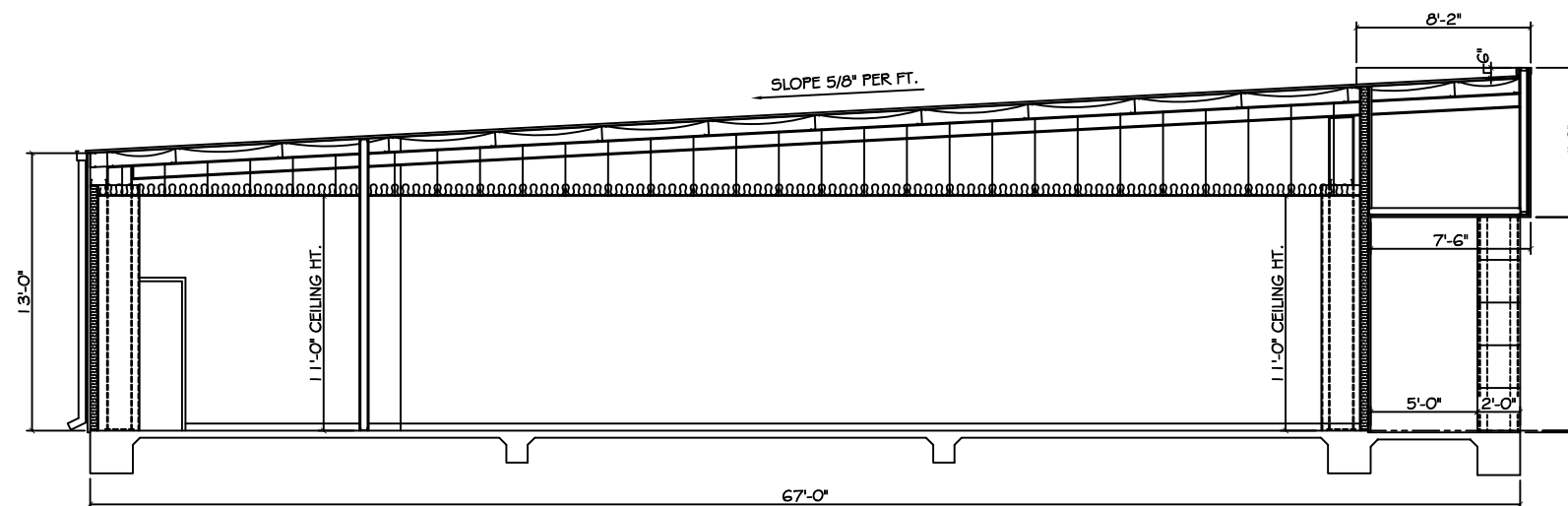
ENGINEERING

STUDIES

PLANNING

INVESTIGATION

EXPERT WITNESS



BUILDING SECTION
SCALE: 1/4"=1'

JAMES LEE
CENTER
345 GAUSE
BOULEVARD WEST
SLIDELL, LA

BUILDING
AND
WALL
SECTIONS

REV:

SCALE: AS NOTED

JOB#: 2037

DATE: 08-13-09

SHEET

A-4

PRELIMINARY (NOT FOR CONSTRUCTION)

OF