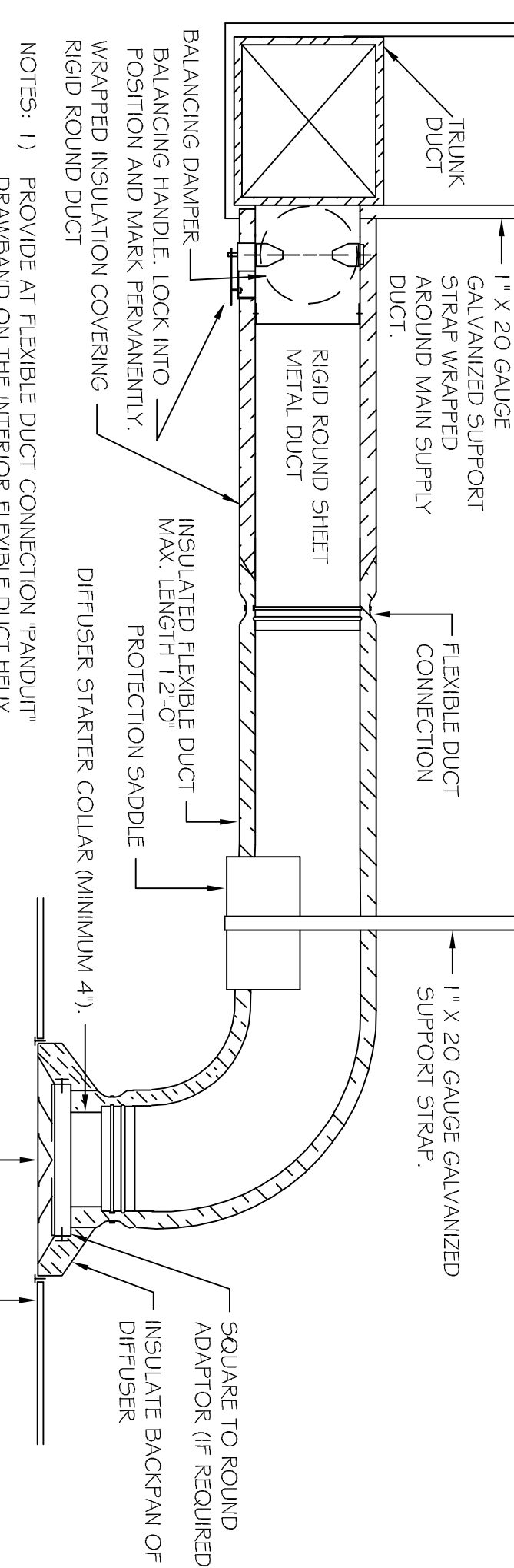
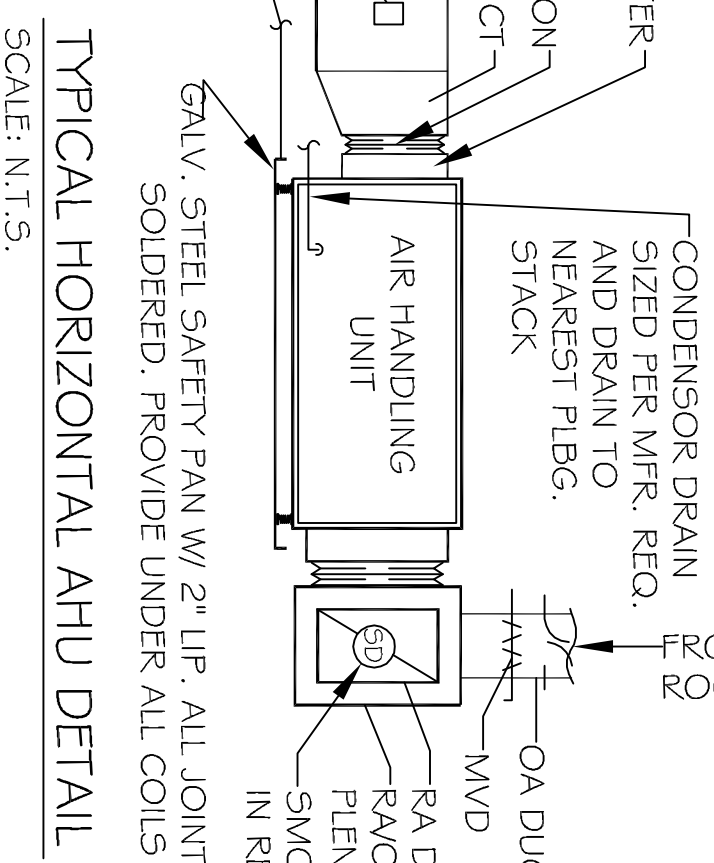
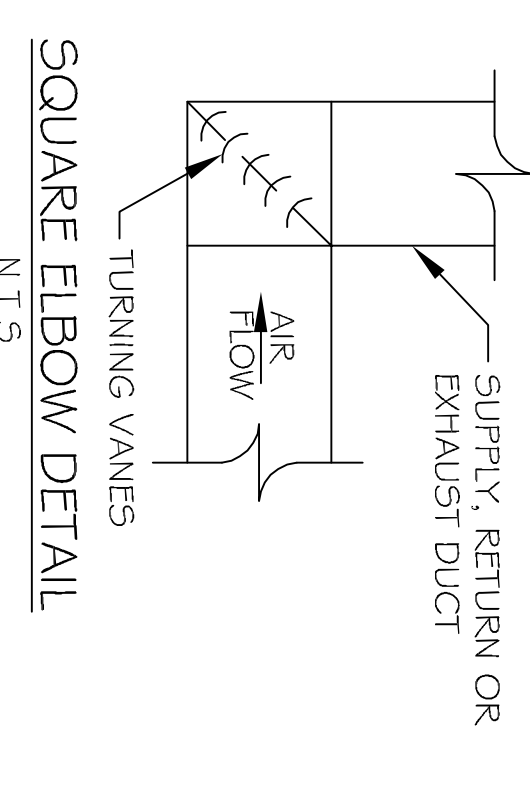
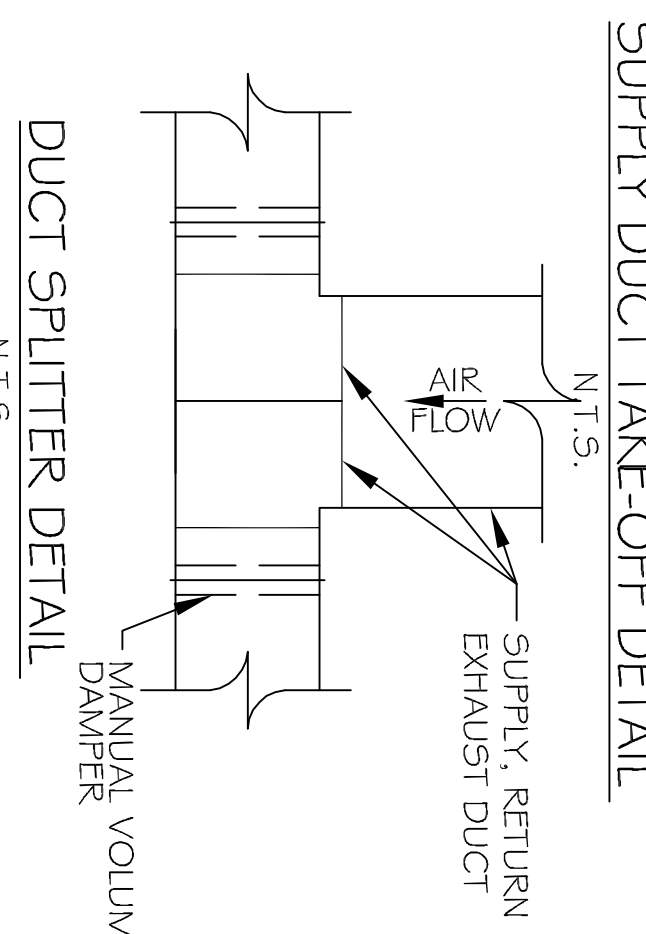
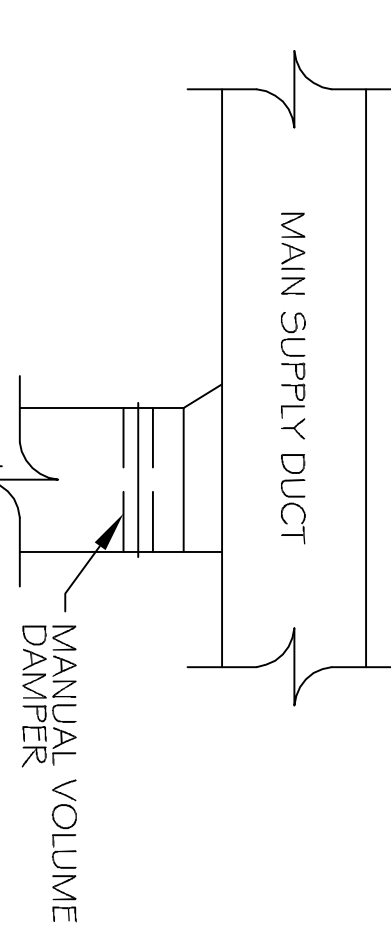
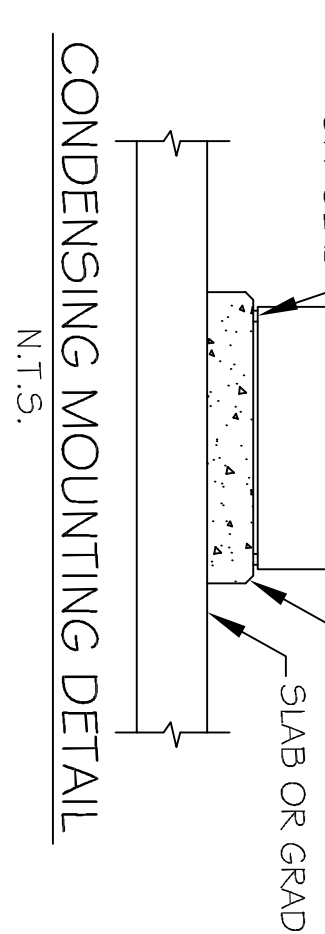


CONDENSING UNIT FEET OR 1" THICK RUBBER ISOLATION PAD AS REQUIRED TO RAISE UNIT OFF SLAB

3 1/2" THICK CONCRETE HOUSEKEEPING PAD WITH CHAMFERED EDGES PAD TO BE MINIMUM 2" LARGER THAN UNIT



NOTES: 1) PROVIDE AT FLEXIBLE DUCT CONNECTION "RANDU" DRABRAND ON THE INTERIOR FLEXIBLE DUCT HELIX.
2) PROVIDE MINIMUM 4" COLLARS FOR ATTACHMENT OF THE FLEXIBLE DUCT TO ROUND DUCT, DAMPERS AND DIFFUSERS.
3) BAND RIGID ROUND DUCT INSULATION TO DUCT AND PROVIDE TAPE FOR INSULATION OVERLAP.

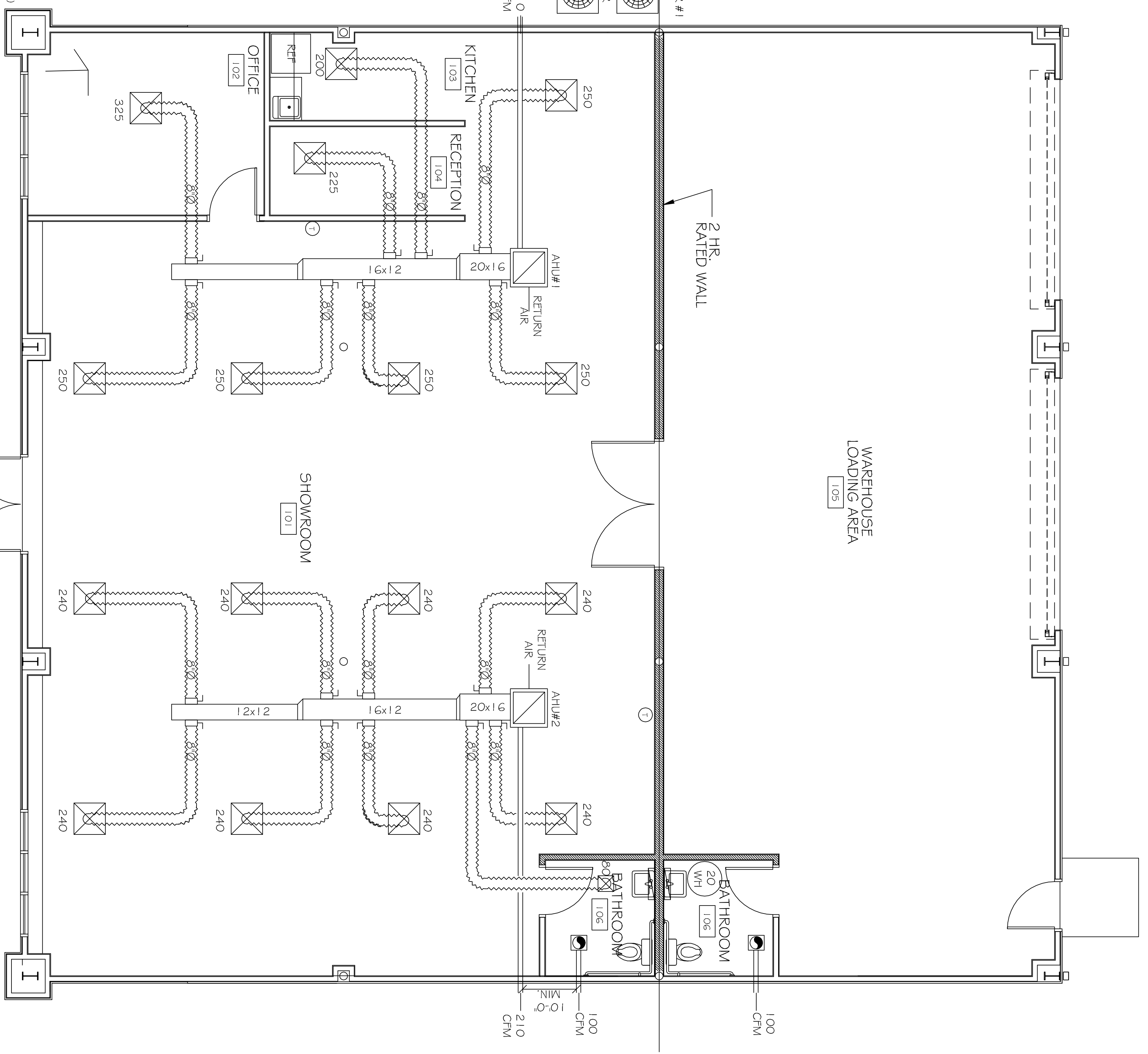
HVAC NOTES

1. CONCEALED DUCTWORK TO BE UL-181, CLASS 1, FIRE-RATED DUCTBOARD. DUCTS SHALL BE SIZED TO LIMIT MAIN DUCTS TO 7,000 CFM & SECONDARY DUCTS TO 800 CFM. TO BE INSTALLED PER SMACNA STANDARDS.
2. EXPOSED DUCTWORK TO BE GALVANIZED SHEET METAL PER SMACNA STANDARDS. LINE ROOF PENETRATIONS TO BE UL-181 DUCT PER CODE FOOT DUCT INSULATION.
3. RIGID ROUND DUCT SHALL BE UL-181 DUCT PER CODE FOOT DUCT INSULATION.
4. DUCT SIZES SHOWN ARE CLEAR INSIDE DIMENSIONS.
5. IN ALL SYSTEMS OVER 2000 CFM AND LESS THAN 15,000 CFM, SMOKE DETECTORS SHALL BE INSTALLED IN ACCORDANCE WITH NFPA 72E IN THE RETURN DUCT DOWNSTREAM OF THE AIR HANDLING UNIT AND ALL FILTERS TO AUTOMATICALLY STOP THE FAN.
6. PROVIDE UL LISTED 25# FIBERGLASS IN RETURN AIR OF EACH SYSTEM UNDER 2000 CFM. PROVIDE UL LISTED 125# FIBERGLASS IN RETURN AIR OF EACH SYSTEM OVER 2000 CFM.
7. PROVIDE UL LISTED FIRE RATED FIRE DAMPERS WHERE REQUIRED BY CODE, INCLUDING OUTSIDE AIR INTAKES, CONDENSATE DRAINS TO BE PVC PIPE RUN TO PLUMBERS P-TRAP WITHIN FIVE FEET OF AIR HANDLING UNITS.
8. CONDENSATE DRAINS TO BE BALANCED TO ASSURE PROPER AIR FLOWS PER PLANS.
9. ALL AIR HANDLING SYSTEMS TO BE BALANCED TO ASSURE PROPER AIR FLOWS PER PLANS.
10. PROVIDE UL LISTED 25# FIBERGLASS IN RETURN AIR OF EACH SYSTEM UNDER 2000 CFM.
11. EXHAUST FAN EQUAL TO ROOM MODEL NO. 100 CF OR EQUAL.
12. CONTROLLED BY A SWITCH ON THE WALL IN THE SAME LOCATION AS LIGHT SWITCHES). PROVIDE BACK DRAFT DAMPER.
13. PROVIDE BACK DRAFT DAMPER.
14. PROVIDE BACK DRAFT DAMPER.
15. PROVIDE BACK DRAFT DAMPER.
16. REFRIGERANT LINES SHALL BE SIZED BY UNIT MANUFACTURER AND INSTALLED ACCORDING TO MANUFACTURER'S INSTRUCTIONS.
17. FRESH AIR SHALL BE SUPPLIED TO EACH AIR HANDLER THROUGH EXTERIOR WALL DUCT SPPLIED WITH A CONTROL DAMPER.
18. ALL ELECTRICAL MECHANICAL AND PLUMBING PENETRATING FIRE WALLS SHALL BE FIRE CALULATED. (PENETRATIONS THROUGH RATED CONSTRUCTION SHALL BE SEALED WITH A MATERIAL CAPABLE OF PREVENTING THE PASSAGE OF FLAME/AND HOT GASES WHEN TESTED IN ACCORDANCE WITH ASTM E814).
19. ALL MECHANICAL SYMBOLS ARE DRAWN DIAGRAMMATICALLY. CONTRACTOR TO VERIFY WITH OWNER ON LOCATIONS OF VENTS, DAMPERS, REGISTER, ETC.
20. REFER TO MECHANICAL SCHEDULES TO COORDINATE LOCATIONS & MOUNTING OF MECHANICAL EQUIPMENT.
21. FLEXIBLE DUCTWORK LENGTH NOT TO EXCEED 110'-0".
22. REFER TO REFLECTED CEILING PLAN FOR FINAL GRILLE AND DIFFUSER LOCATIONS AND COORDINATE AS REQUIRED.
23. FINAL LOCATION OF TEMPERATURE CONTROLS TO BE COORDINATED WITH OWNER AT CONTRACTOR'S RISK.
24. PROVIDE AND INSTALL SMOKE DETECTORS AS APPROVED BY LOCAL AHS. PLACE NEAR RA AND SA OPENINGS OF AHU AND PROVIDE WITH ACCESS PANEL, WIRING BY ELECTRICAL CONTRACTOR.
25. FRESH AIR INTAKES ARE REQUIRED TO HAVE MOTORIZED OR GRAVITY DAMPERS TO SHUT OFF WHEN SYSTEM IS NOT RUNNING. ALL THERMOSTATS MUST BE PROGRAMMABLE. SEE SECTION 502.4.4 OR 503.2.4.5 OF THE 2008 INTERNATIONAL ENERGY CODE.

A/C UNIT SCHEDULE							
NO.	TOTAL NO.	CFM	O.A.	HEAT ELEC.	ELECTRICAL VOLTAGE W/CH	EXH. BRKR.	COMMENTS
1	60,000	2,000	210	115 KW	200V, 3Ø	FULL	
2	60,000	2,000	210	115 KW	200V, 3Ø	FULL	

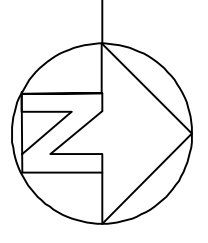
EXHAUST FAN SCHEDULE				
FAN NO.	CFM	VOLTAGE	TYPE	SHAFT
EF-1	100	120	VENTILIGHT	

- LEGEND
- 24x24 CEILING DIFFUSER
 - 12x12 DIFFUSERS IN TOLLER ROOMS
 - VENT / LIGHT COMBINATION
 - THERMOSTAT
 - A/C UNIT



FLOOR PLAN

SCALE: 1/4" = 1'



RAY HORVATH FLOORWORKS AND BLINDS
RETAIL
1360 SHORTCUT ROAD
SLIDELL, LA 70455

JOB No:	2152	DATE:	10-23-12
DRAWN BY:	BSN	CHECKED BY:	BSN



DAMMON
ENGINEERING, INC.
Architects & Engineers

CHIEF ENGINEER, EMMETT DAMMON, P.E.
CHIEF ARCHITECT, ROBERT WILTSE
554 OLD SPANISH TRAIL
SLIDELL, LA 70456

dammoneengineering.com
dammoneg@bellsouth.net
PHONE: 985-649-5832
FAX: 985-641-5950

MECHANICAL PLAN

SHEET No: 7 OF 9

M-1