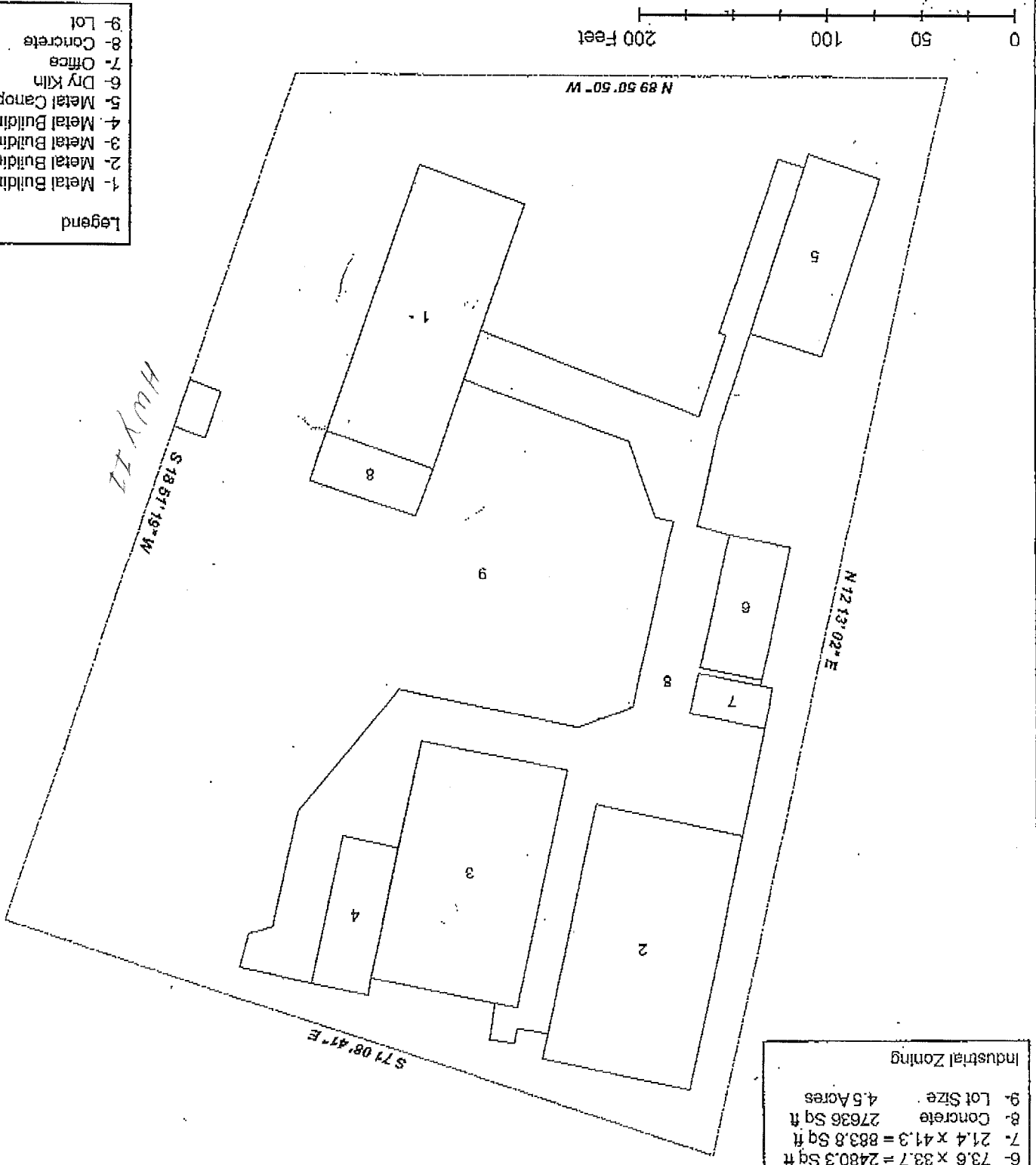


**Heartwood Lumber Industrial Site**

Approximate Square Footage

Industrial Zoning	Approximate Square Footage
1- 150.7 x 60.4 = 9102.2 Sq ft	
2- 141.2 x 80.3 = 11338.3 Sq ft	
3- 129.6 x 80.2 = 10393.9 Sq ft	
4- 79.5 x 30.5 = 2427.7 Sq ft	
5- 100.0 x 40.0 = 4000.0 Sq ft	
6- 73.6 x 33.7 = 2480.3 Sq ft	
7- 21.4 x 41.3 = 883.8 Sq ft	
8- Concrete 27636 Sq ft	
9- Lot Size 4.5 Acres	



- Legend
- 1- Metal Building
  - 2- Metal Building
  - 3- Metal Building
  - 4- Metal Building
  - 5- Metal Canopy
  - 6- Dry Kiln
  - 7- Office
  - 8- Concrete
  - 9- Lot