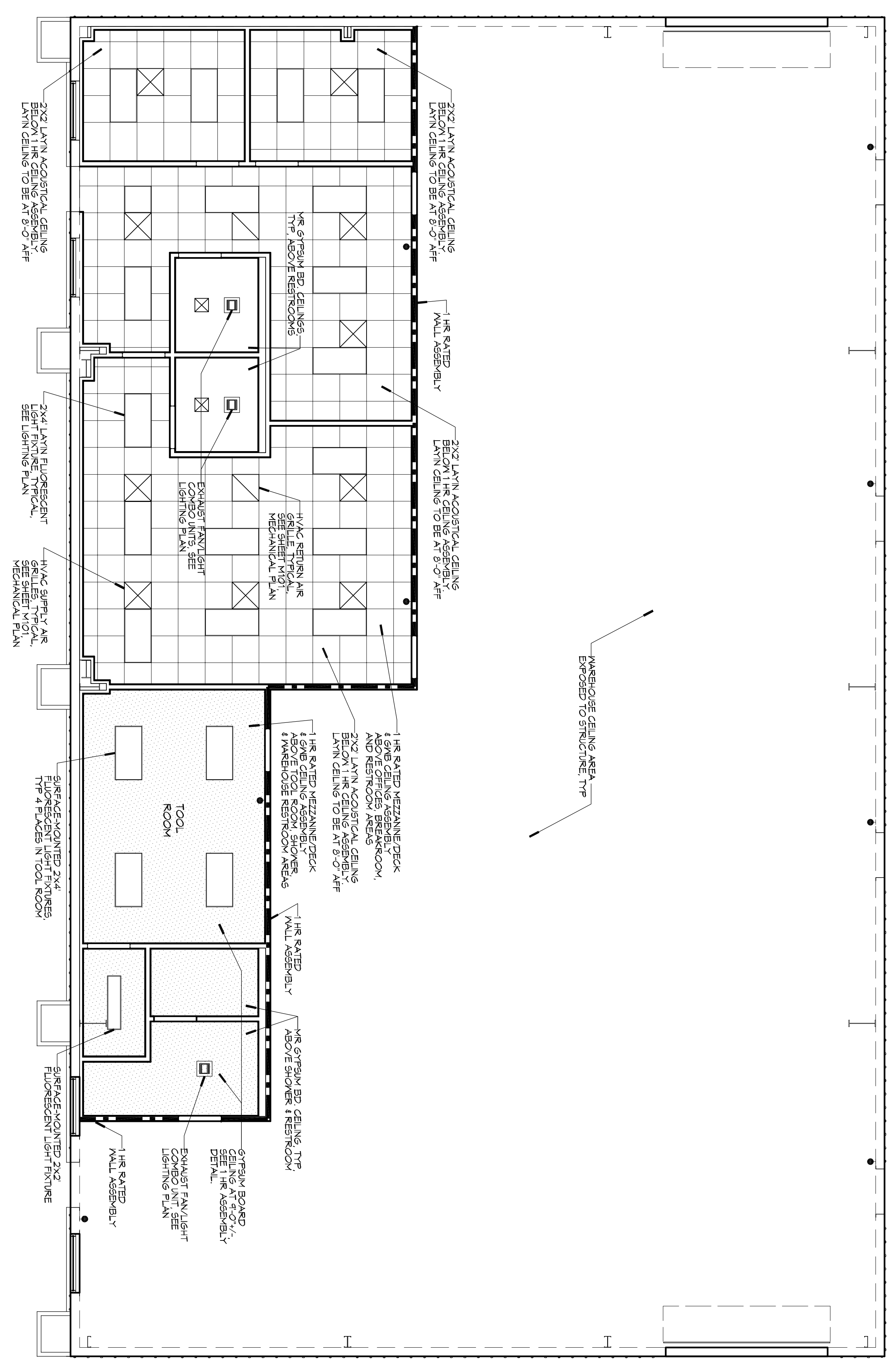


**REFLECTED CEILING PLAN**  
SCALE: 3/8"=1'-0"



SHEET NO: **A102**

**OFFICE BUILDOUT FOR**  
**YUBERTUMS**

176 STRAWBERRY STREET  
SLIDELL, LOUISIANA 70460

JOB No: 2221 DATE: 01-07-15  
DRAWN BY: KJK CHECKED BY: CKD

This drawing contains the specifications, design and arrangements registered hereby and used shall remain the property of Dammon Engineering, and no part thereof shall be copied, reproduced, or transmitted in any form or by any means, electronic, mechanical, photocopying, recording, or by any information storage and retrieval system, without the prior written permission of Dammon Engineering. Please contact with their coverage of specifications, and conditions.

REVISIONS		DATE
#	DESCRIPTION	

**DAMMON**  
**ENGINEERING, INC.**  
*Architects & Engineers*

Chief Architect: Kevin J. Kinchen, NCARB  
Chief Engineer: Brian Mistic, PE

www.dammonengineering.com  
info@dammonengineering.com  
554 Old Spanish Trail  
Slidell, LA 70458  
PH: 985.649.5832  
F: 985.641.5950