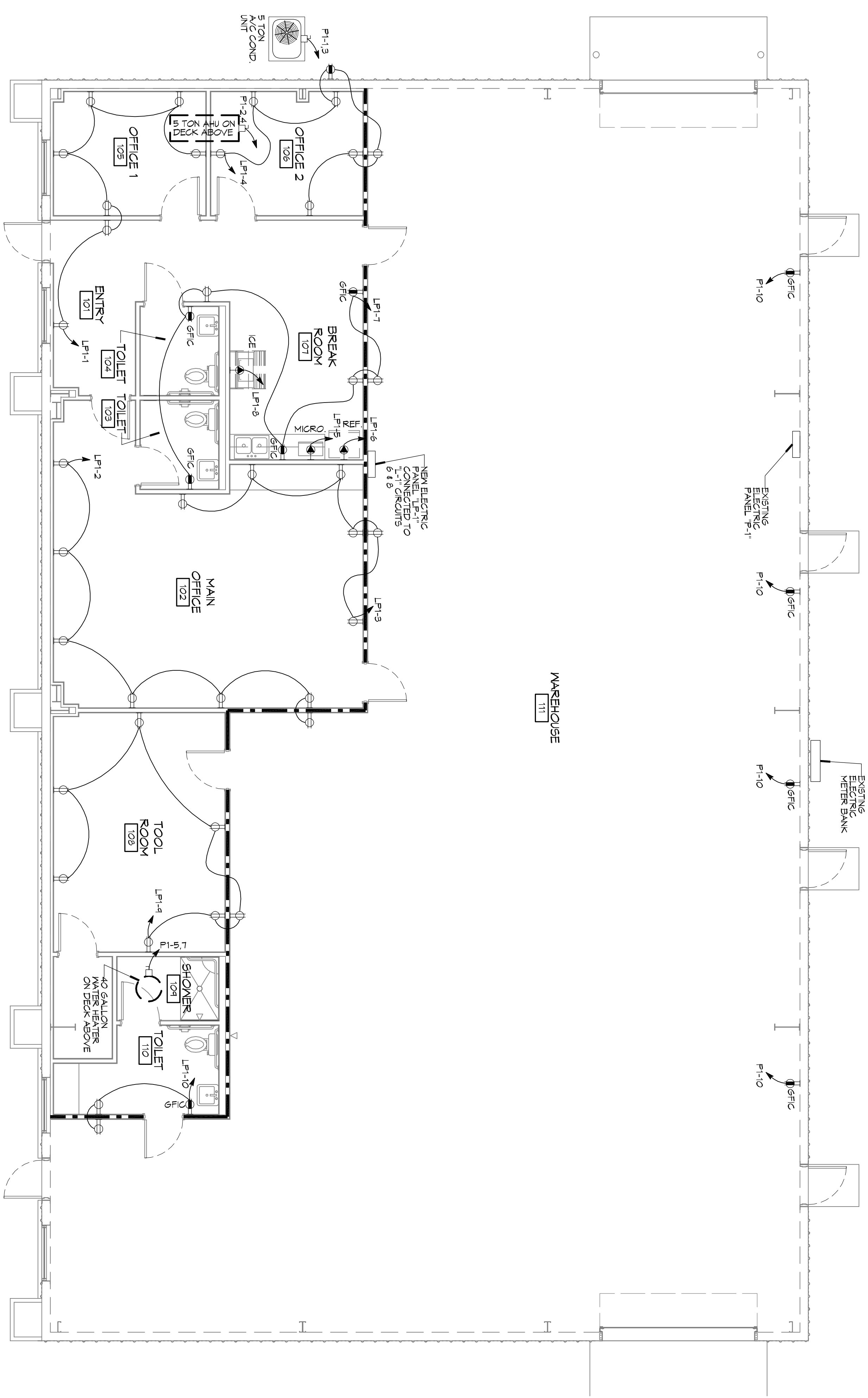


**ELECTRICAL POWER PLAN**  
SCALE: 3/16\"/>



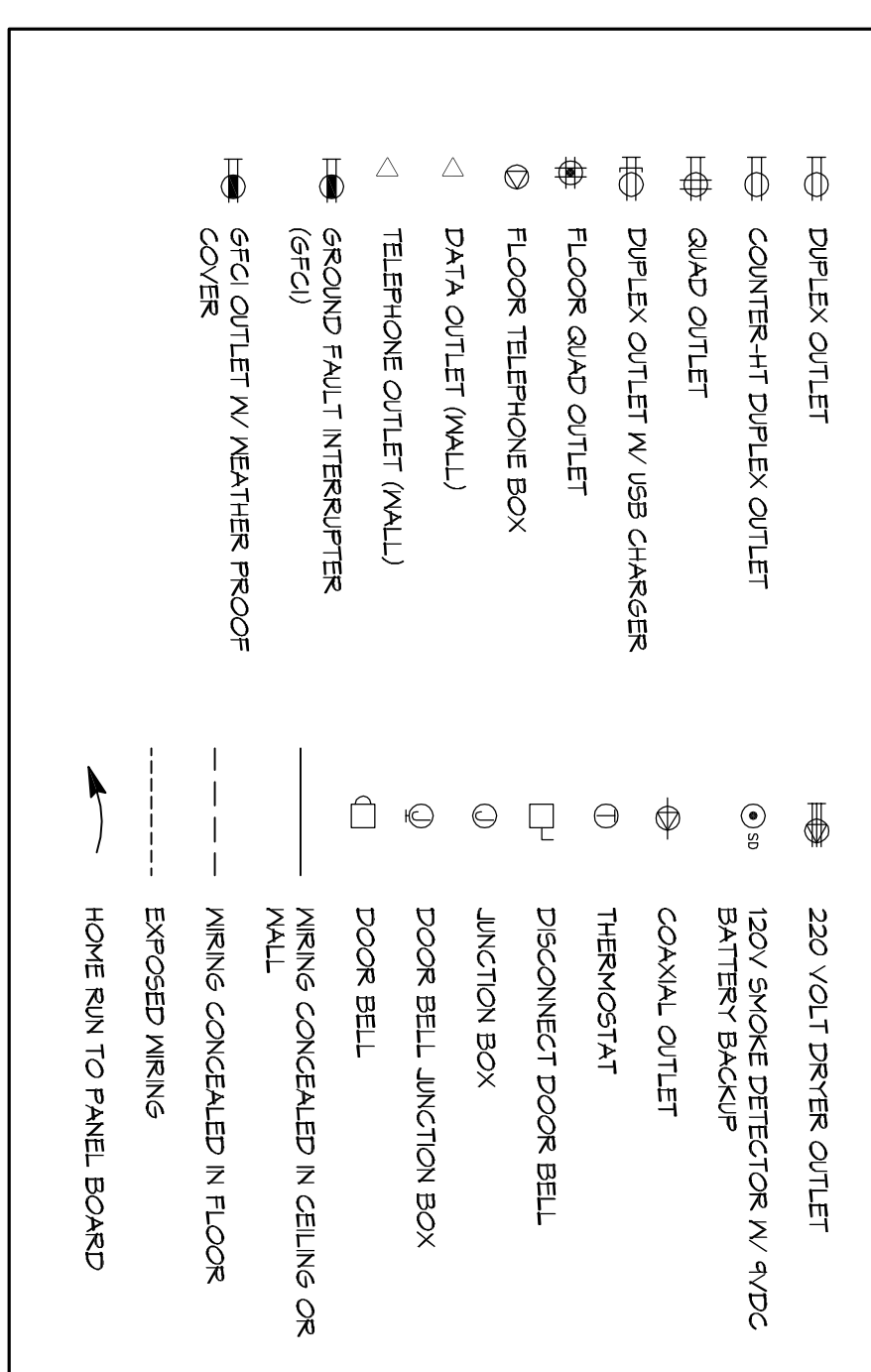
**GENERAL NOTES**

- DRAWINGS ARE DIAGNOSTIC ONLY. FINISH ALL CONDUIT, WIRING, PANELS, BREAKERS, DISCONNECTS, ACCESSORIES, ETC. FOR COMPLETE INSTALLATION EITHER OR NOT EXPLICITLY SHOWN OR SPECIFIED.
- THESE DRAWINGS ARE INTENDED AS GENERAL GUIDELINES FOR PURPOSES OF ESTABLISHING BEST PRACTICES, AND DO NOT NECESSARILY REPRESENT THE FINAL LAYOUT. ARRANGEMENT, SIZE, BRAND NAME, CAPACITY OR OTHER CHARACTERISTICS OF THE ENGINEERED SYSTEM SHALL BE DETERMINED IN ACCORDANCE WITH ALL APPLICABLE CODES, STANDARDS AND REQUIREMENTS OF LOCAL UTILITY OFFICIALS.
- INSTALL GFCI OUTLETS AS REQUIRED BY APPLICABLE CODES. INSTALL GROUND FAULT INTERRUPTERS AT RECEPTACLE LOCATIONS WITHIN 5' OF SINKS OR LAVATORIES, AND AT EXTERIOR LOCATIONS. EXTERIOR RECEPTACLES SHALL ALSO BE WEATHERPROOF.
- INSTALL HARDWIRED SMOKE DETECTORS WITH BATTERY BACKUP AS REQUIRED. INTER-CONNECT DETECTORS SO THAT ALL WILL SOUND SHOULD ONE DETECTOR ACTIVATE.
- SOME EQUIPMENT SHOWN ON OTHER PLANS MAY REQUIRE ELECTRICAL SERVICE SUCH AS WATER HEATER, CONDENSING UNITS, AIR-HANDLING UNITS, CONDENSATE PUMPS, ETC... ELECTRICAL CONTRACTOR SHALL INCLUDE ELECTRICAL SERVICE TO ALL SUCH EQUIPMENT. COORDINATE WITH OTHER TRADES CONCERNING CONCERNING TRAYS REQUIRING ELECTRICAL SERVICE. PROVIDE ONE OTHER TRAY OUTLET AND LEAD IN UNIT IS IN NON-UTL AREA FOR EVERY CONDENSING UNIT AND EVERY AIR-HANDLING UNIT AS REQUIRED BY APPLICABLE CODES.
- OBTAIN NAME PLATE AND RATINGS OF ALL EQUIPMENT BEFORE ROUGHING IN AND PROVIDE WIRING OF PROPER SIZE, VOLTAGE, AND AMPACITY. PROVIDE FUSED OR NON-FUSED DISCONNECT SWITCH AS REQUIRED.
- PROVIDE PANEL BOARDS OF PROPER VOLTAGE AND AMPACITY FOR ALL ELECTRICAL CIRCUITS.
- VERIFY SERVICE REQUIREMENTS WITH LOCAL POWER COMPANY INCLUDING TRANSFORMER LOCATIONS AND TYPES, DISCONNECTS AT EXTERIOR OF BLDG., VOLTS AND AMPACITIES AND OTHER DETAILS OF ELECTRICAL CONSTRUCTION. SIZE ALL FEEDERS ACCORDING TO NEC REQUIREMENTS.
- RUN ALL CABLE CONCEALED IN WALLS, CEILINGS OR FLOORS UNLESS NOTED OTHERWISE.
- SUPPORT ALL FIXTURES AND OTHER ITEMS RIGIDLY FROM STRUCTURE.
- INSULATE AND SEAL SOLIDLY BEHIND RECEPTACLES IN EXTERIOR WALLS.
- ALL SWITCHES AND OUTLETS ON FIRST FLOOR TO BE 1'-0" ABOVE BASE FLOOD ELEVATION.
- WHERE MORE THAN ONE SWITCH OCCURS IN THE SAME LOCATION, THEY SHALL BE INSTALLED IN A GANG-TYPE BOX UNDER ONE COVER PLATE.
- ALL OUTLETS SHALL BE INSTALLED 18" AFF UNLESS NOTED OTHERWISE. SEE ELECTRICAL POWER PLAN FOR INDICATED MOUNTING HEIGHT.
- REFERS TO REFLECTED CEILING PLAN FOR RECESSED LIGHT FIXTURE LOCATIONS.

**GENERAL UTILITY NOTES**

- 5/4" SQ. PVC CONDUIT WHERE PIPE IS EXPOSED ABOVE GRADE. TRANSITION TO 3/4" PVC BELOW GRADE. ALL 90° ELBOWS TO BE LONG SWEEP TYPE.
- 100/250V, 1Ø 200A SERVICE FROM UTIL. CO. FEEDER BY UTIL. CO. TO METER BOX. FIELD LOCATE TRANSFORMER ON POLE AND COORDINATE WITH ELEC. COMPANY REGARDING NEW ELECTRICAL SERVICE CONNECTION.
- CONTACT LOUISIANA ONE CALL BEFORE DIGGING.

**ELECTRICAL POWER LEGEND**



**DAMMON ENGINEERING, INC.**  
*Architects & Engineers*

Chief Architect: Kevin J. Kinchen, NCARB  
Chief Engineer: Brian Mistich, PE  
554 Old Spanish Trail  
Slidell, LA 70458

www.dammoneengineering.com  
info@dammoneengineering.com  
PH: 985.649.5832  
F: 985.641.9590

REVISIONS		DATE
#	DESCRIPTION	

**OFFICE BUILDOUT FOR**

176 STRAWBERRY STREET  
SLIDELL, LOUISIANA 70460

JOB No: 2221 DATE: 01-14-15

DRAWN BY: KJK CHECKED BY: CKJ

SHEET TITLE: POWER PLAN

DRAWING NUMBER: E101

SHEET No: 9 of 11