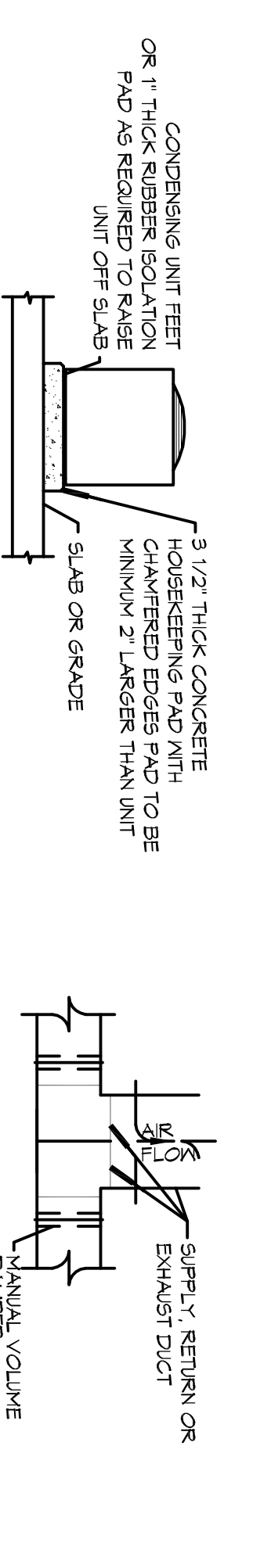
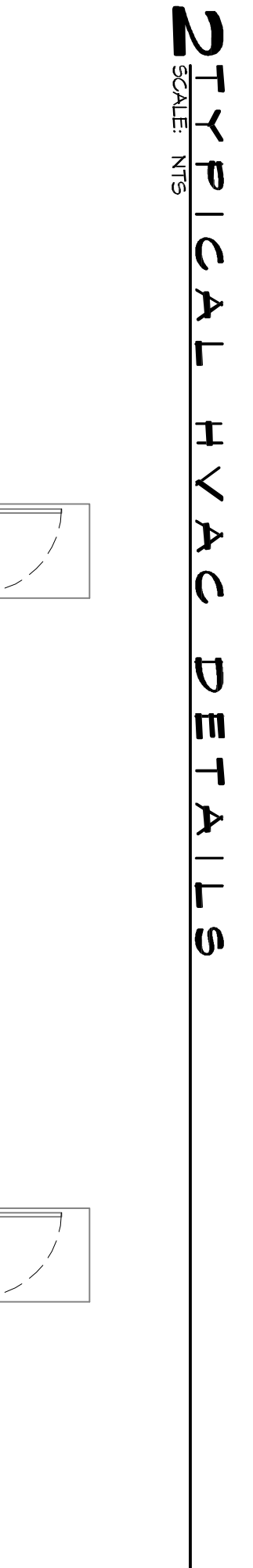


TYPICAL HORIZONTAL AHU DETAIL
SCALE: N.T.S.



CONDENSING MOUNTING DETAIL
N.T.S.



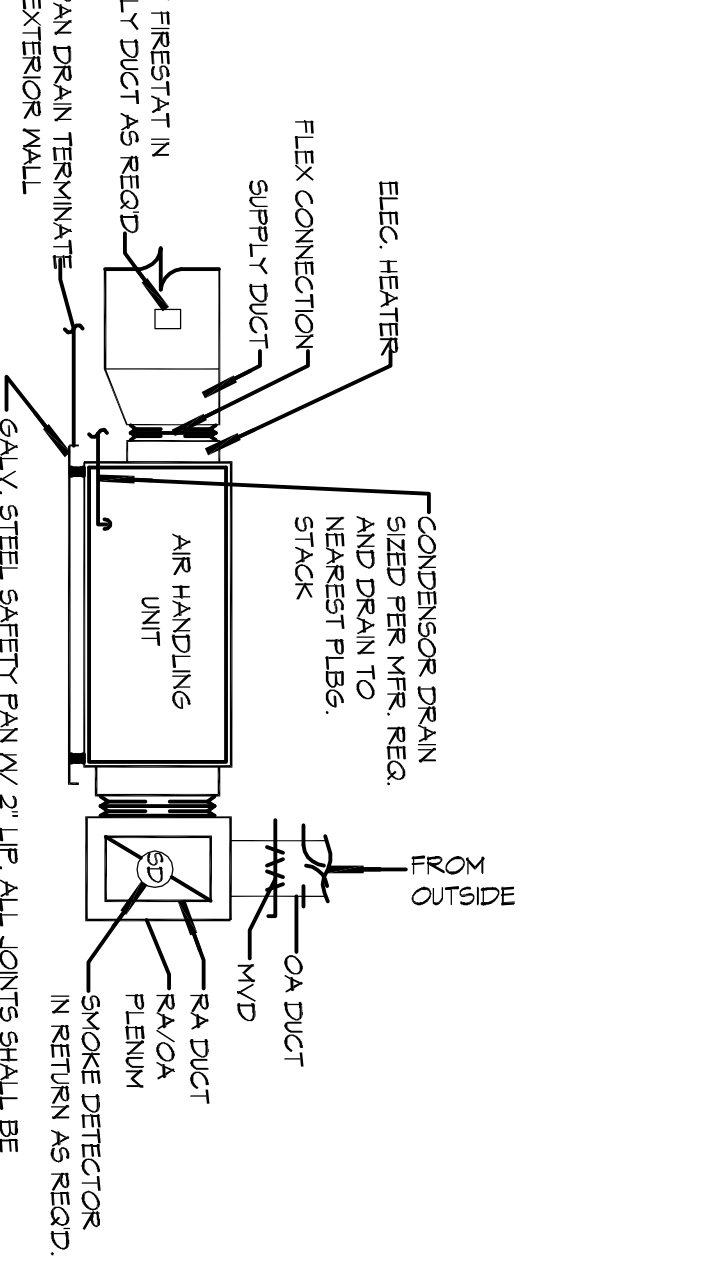
DUCT SPLITTER DETAIL
N.T.S.



SUPPLY DUCT TAKE-OFF DETAIL
N.T.S.



SQUARE ELBOW DETAIL
N.T.S.



TYPICAL HORIZONTAL AHU DETAIL
SCALE: N.T.S.



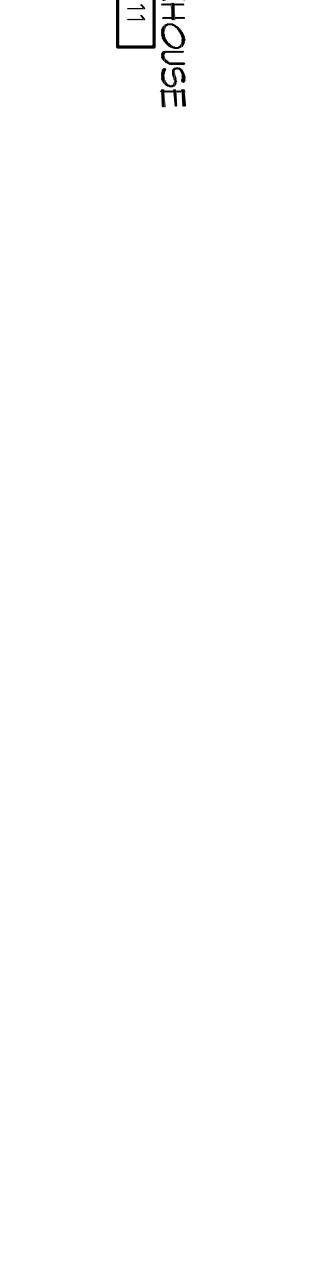
CONDENSING MOUNTING DETAIL
N.T.S.



DUCT SPLITTER DETAIL
N.T.S.



SUPPLY DUCT TAKE-OFF DETAIL
N.T.S.



SQUARE ELBOW DETAIL
N.T.S.

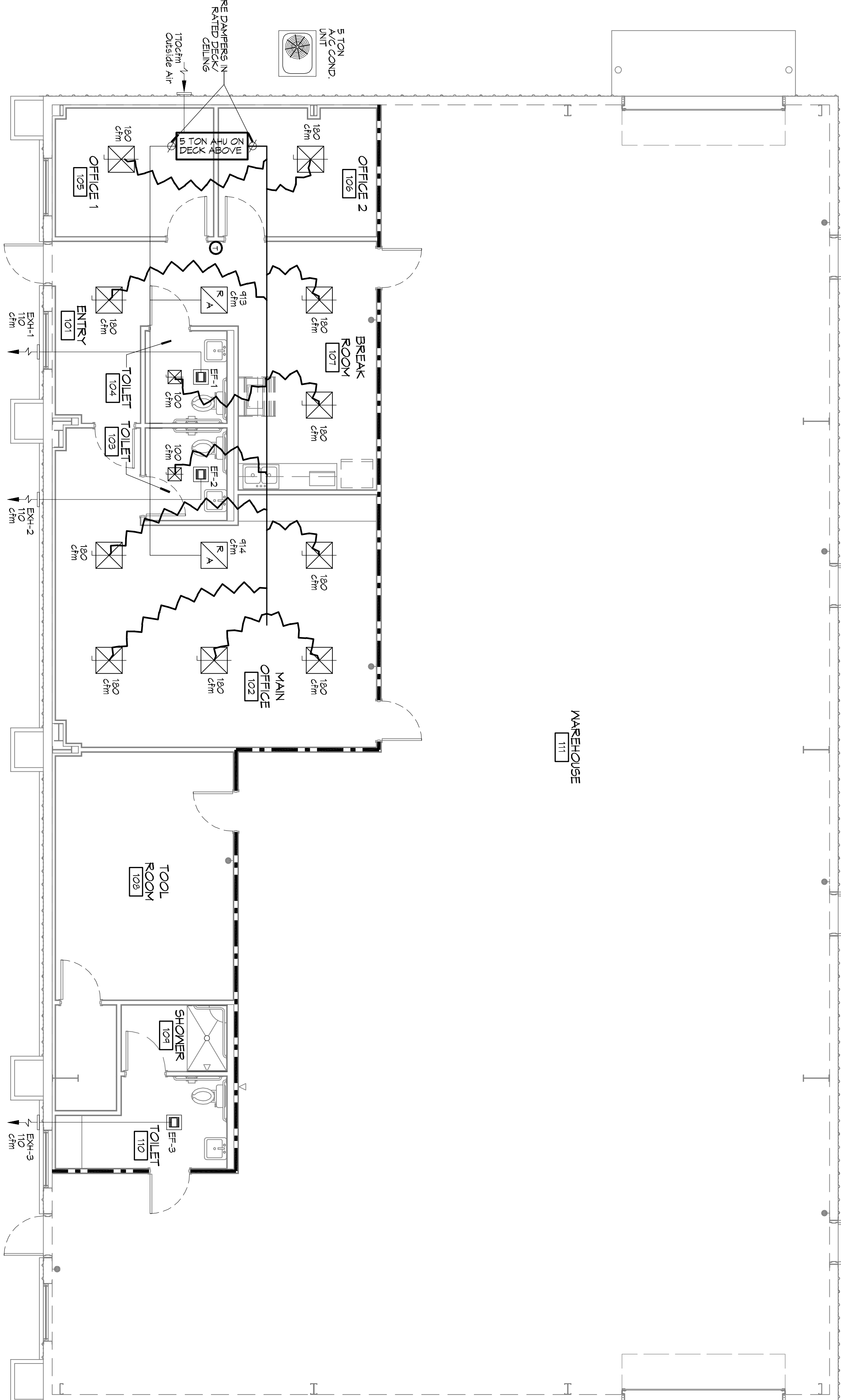
A/C UNIT SCHEDULE				ELECTRICAL		COMMENTS	
TOTAL BTU	VOLTAGE	WATTAGE	PHASES	CCT BREAKS	SYSTEM	HAAC TRANE	OR EQUAL
60,000 BTU (5 TON)	240V/1Ø	94.5	HP-13				

AHU UNIT SCHEDULE				ELECTRICAL		COMMENTS	
TOTAL BTU	CFM	O.A. (KVA)	VOLTAGE	PHASES	SYSTEM	HAAC TRANE	OR EQUAL
60,000 BTU (5 TON)	2,000	150	240V/1Ø	5E,0	HP-24		

EXHAUST FAN SCHEDULE				ELECTRICAL		COMMENTS	
EXHAUST LOCATION	CFM	VOLTAGE	TYPE	MANUFACTURER	SYSTEM	HAAC TRANE	OR EQUAL
EF-1-23 TOILETS	110	120	VENT	BROAN OR EQUAL			

GENERAL NOTES

1. CONCEALED DUCTWORK TO BE UL-181, CLASS 1, FIBERGLASS DUCTS SHALL BE SIZED TO LIMIT MAIN DUCTS TO 1000 CFM & SECONDARY DUCTS TO 500 CFM. TO BE INSTALLED PER SMACNA STANDARDS.
2. EXPOSED DUCTWORK TO BE GALVANIZED SHEET METAL PER SMACNA STANDARDS. LINE WITH NEOPRENE COATED 10\"/>



MECHANICAL PLAN
SCALE: 3/8\"/>

LEGEND

- SUPPLY AIR GRILLE
- RETURN AIR GRILLE
- EXHAUST FAN W/LIGHT
- THERMOSTAT
- SUPPLY AIR DUCT
- RETURN AIR DUCT
- FIRE DAMPER
- SUPPLY DAMPER CONTROL
- ROUND FLEX DUCT MAX LENGTH 14\"/>

OFFICE BUILDOUT FOR
176 STRAWBERRY STREET
SLIDELL, LOUISIANA 70460

JOB No: 2221 DATE: 01-07-15
DRAWN BY: KJK CHECKED BY: CKD

DAMMON ENGINEERING, INC.
Architects & Engineers

Chief Architect: Kevin J. Kinchen, NCARB
Chief Engineer: Brian Nistich, PE
554 Old Spanish Trail
Slidell, LA 70458

www.dammoneengineering.com
info@dammoneengineering.com
PH: 985.649.5832
F: 985.641.5950

#	DESCRIPTION	DATE

DAMMON ENGINEERING, INC.
Architects & Engineers

Chief Architect: Kevin J. Kinchen, NCARB
Chief Engineer: Brian Nistich, PE
554 Old Spanish Trail
Slidell, LA 70458

www.dammoneengineering.com
info@dammoneengineering.com
PH: 985.649.5832
F: 985.641.5950