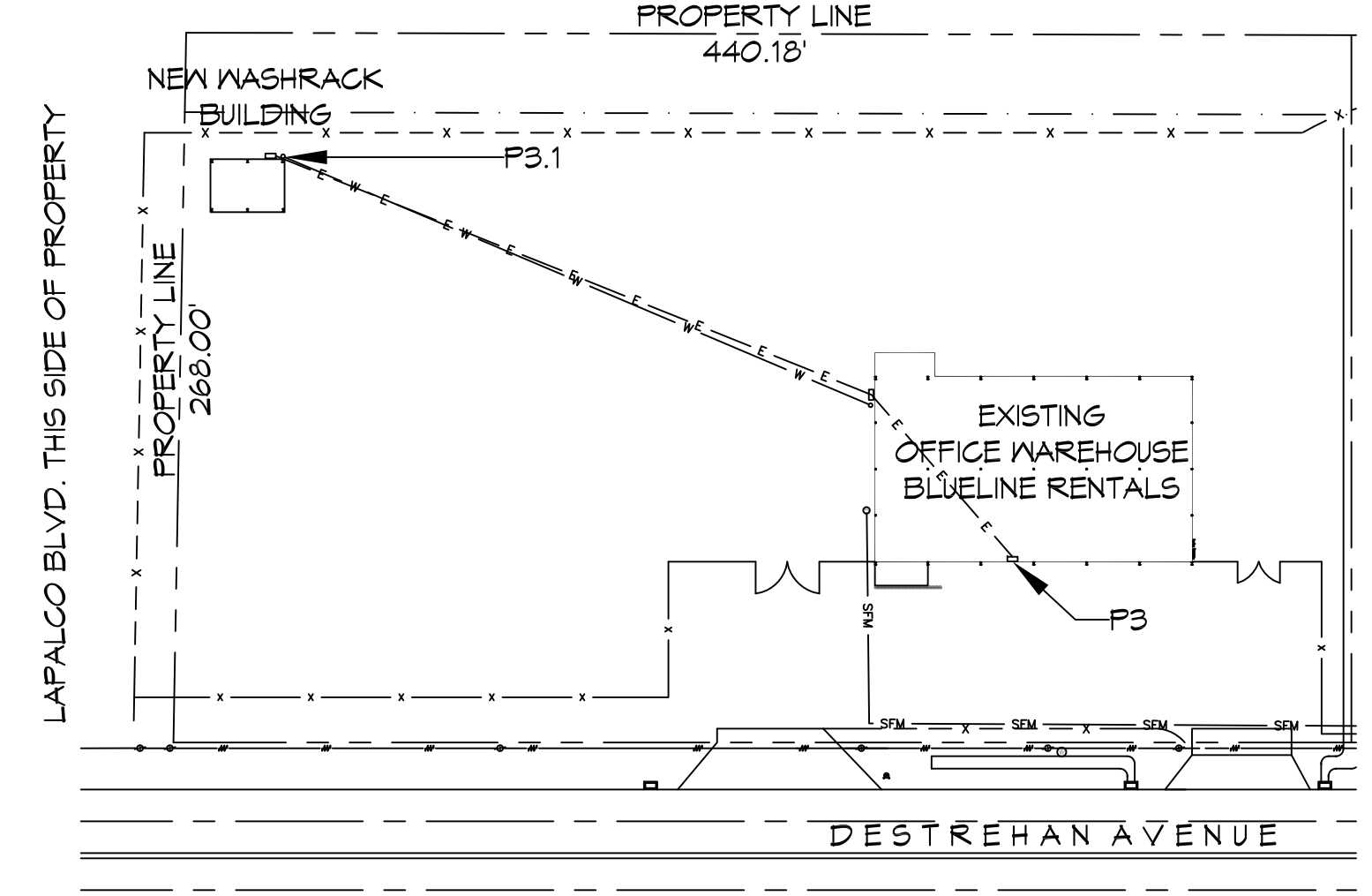
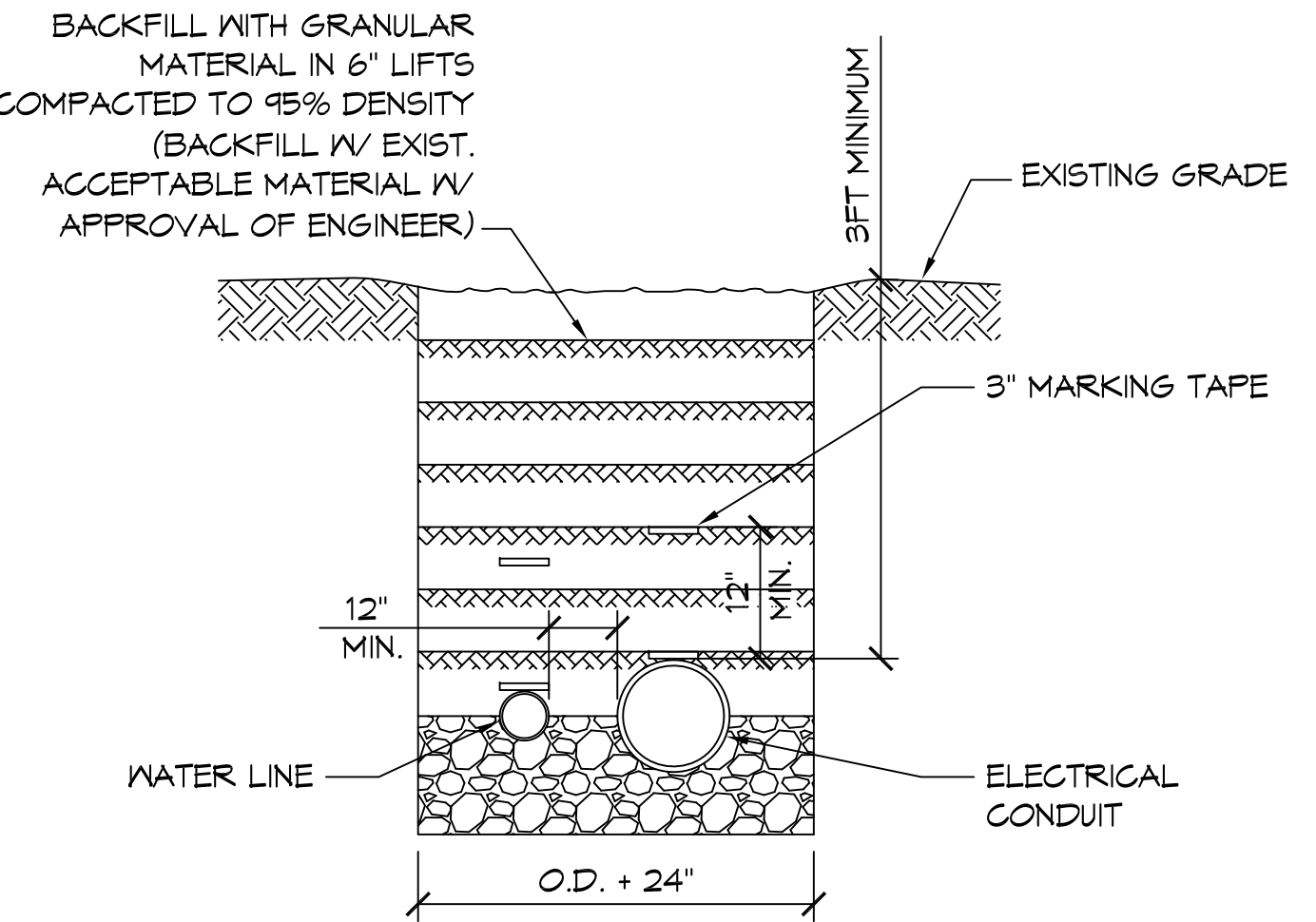
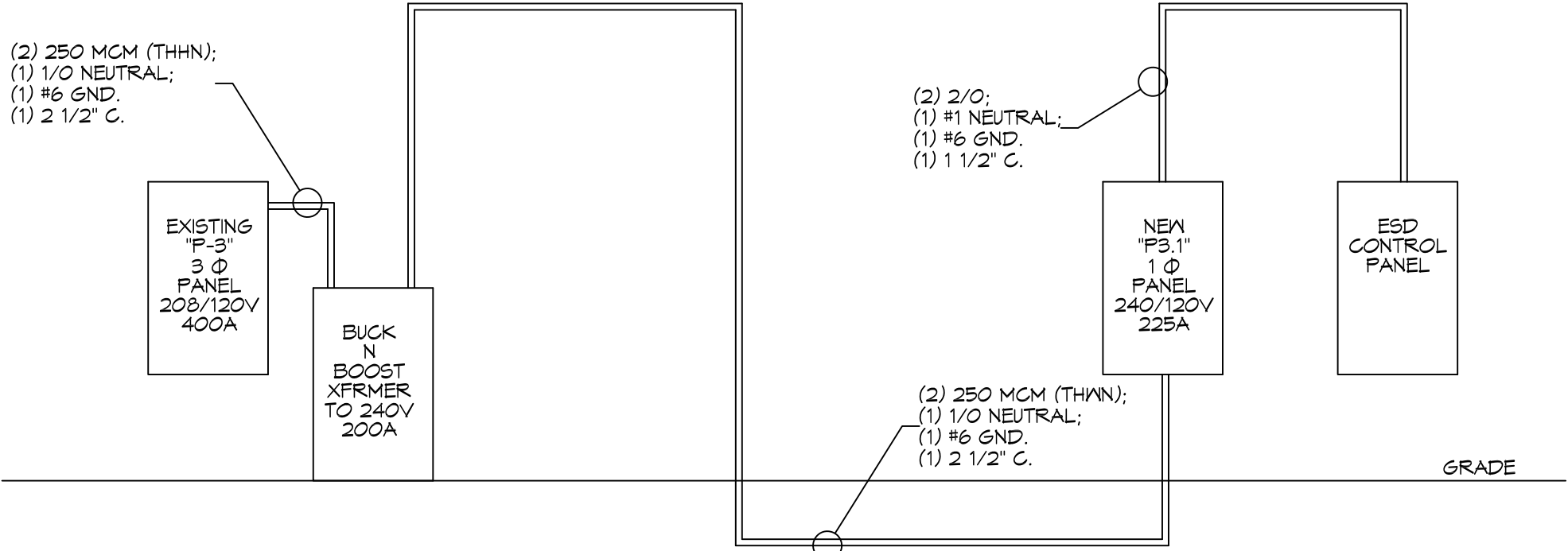
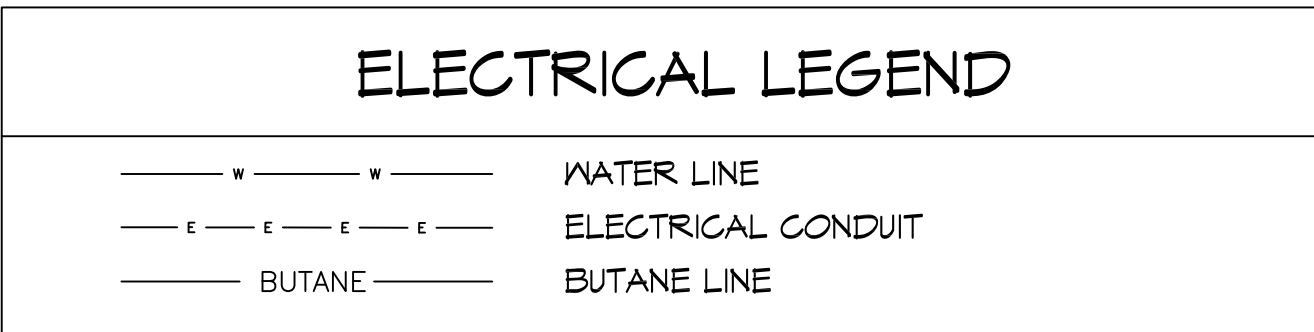


GENERAL LIGHTING NOTES

1. ALL WORK SHALL COMPLY WITH APPLICABLE NATIONAL, STATE, AND LOCAL CODES, RULES, REGULATIONS, AND REQUIREMENTS OF THE SERVICE UTILITY COMPANY.
2. ALL 120V RUNS LONGER THAN 60 FEET SHALL BE #10 AWG AND 277V RUNS LONGER THAN 150 FEET SHALL BE #10 AWG UNLESS NOTED OTHERWISE.
3. ALL CONDUCTORS SHALL BE COPPER.
4. WHERE CONDUCTOR SIZES ARE NOTED ON DRAWINGS, THAT WIRE SIZE SHALL BE THROUGH THE ENTIRE RUN UNLESS OTHERWISE NOTED.
5. MOUNTED LIGHT SWITCHES 48" AFF UNLESS NOTED OTHERWISE ON ARCHITECTURAL DRAWINGS.
6. WHERE MORE THAN ONE SWITCH OCCURS IN THE SAME LOCATION, THEY SHALL BE INSTALLED IN A GANG TYPE BOX UNDER ONE COVER PLATE. ALL GANGED SWITCHES SHALL HAVE A COMMON SEAMLESS FACEPLATE. EACH MULTI-GANGED BOX SHALL BE NO MORE THAN SIX (6) SWITCHES WIDE. WHERE MORE THAN SIX (6) SWITCHES ARE SHOWN AT ONE (1) LOCATION, ADDITIONAL MULTI-GANGED BOXES SHALL BE STACKED VERTICALLY AND THE WIDTH OF THE MULTI-GANGS SHALL BE AS EVEN AS POSSIBLE.
7. ALL EMERGENCY LIGHT FIXTURES SHALL HAVE 90 MINUTE BATTERY BACKUP WITH INTEGRAL TEST BUTTON AND SHALL BURN CONTINUOUSLY.
8. ALL FLUORESCENT FIXTURES THAT UTILIZE DOUBLE-ENDED LAMPS AND CONTAIN BALLASTS SHALL BE PROVIDED WITH A DISCONNECTING MEANS IN ACCORDANCE WITH NEC 410.136.
9. MINIMUM CONDUCTOR SIZE SHALL BE #12, 600V INSULATION. MINIMUM SIZE CONDUIT SHALL BE 3/4" ELECTRICAL METALLIC TUBING (EMT) FOR INTERIOR USE, 3/4" RIGID ALUMINUM FOR EXTERIOR USE ABOVE GRADE AND 1" SCHEDULE 40 PVC, BURIED A MINIMUM OF 18" FOR NON-VEHICULAR TRAFFIC AREAS. FOR CONDUITS BELOW GRADE, EMT SHALL BE USED WITH METAL STUD CONSTRUCTION. 6 FT LENGTH MC CABLE IS ALLOWED ABOVE DROPPED CEILING. INTERIOR FITTINGS SHALL BE CAST WHERE EXPOSED ON WALLS, AND EXTERIOR FITTINGS SHALL BE CAST BOXES WITH NEMA 3R COVER(S).

CCT. NO.	THIN WIRE SIZE	LOAD DESCRIPTION		BREAKER		LOAD (VA)	A/B/BØ	LOAD (VA)	BREAKER		LOAD DESCRIPTION	THIN WIRE SIZE	CCT. NO.
		LOCATION	AMP	POLE	LOCATION				AMP	POLE			
1	2/0	ESD CONTROL PANEL	150	2	14,040		1200	1	20		LIGHTING	#12	2
3					14,040			1	20		SPARE		4
5		BLANK						1	20		SPARE		6
7		BLANK									BLANK		8
9		BLANK									BLANK		10
11		BLANK									BLANK		12

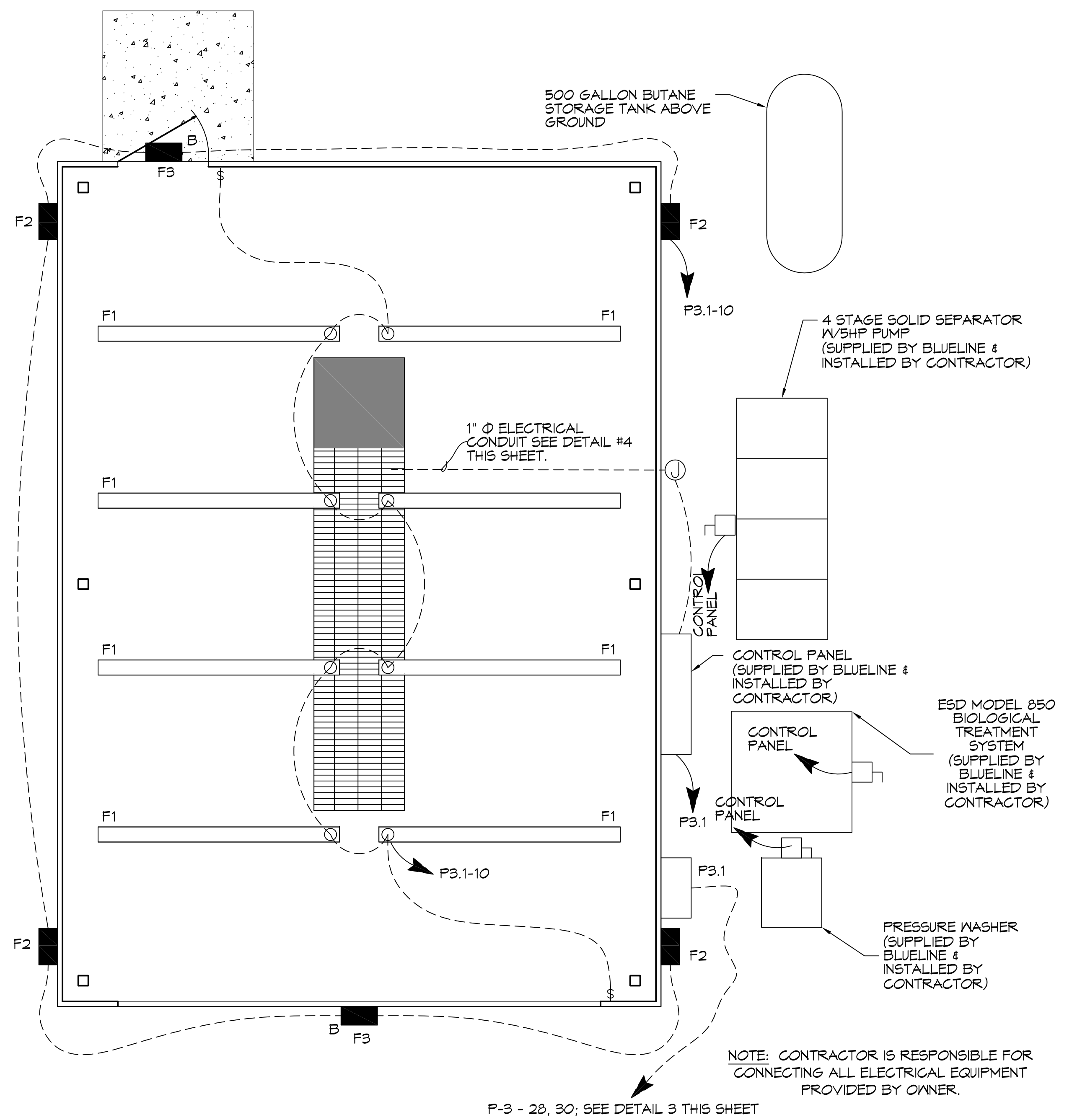
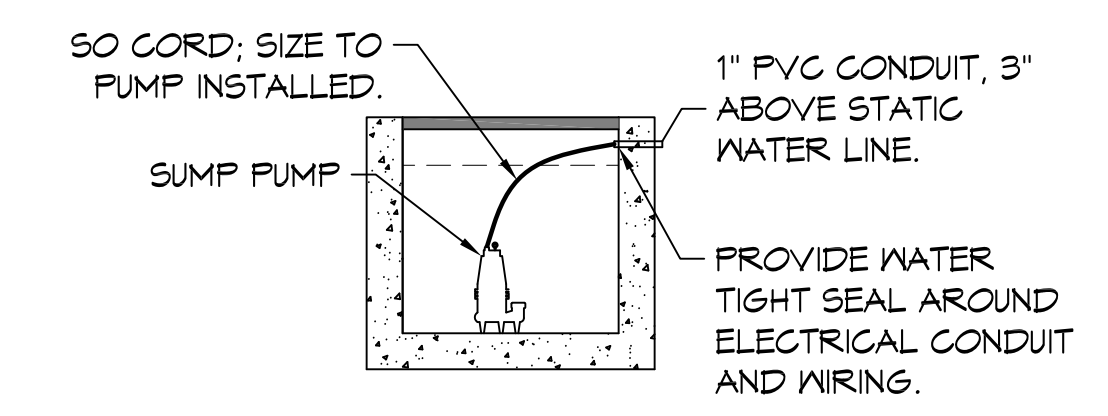
TOTAL CONNECTED LOAD (VA) = 29,280
 AØ = 15,240 BØ = 14,040



LIGHTING FIXTURE SCHEDULE

EXAMPLE	LABEL	DESCRIPTION	MANUFACTURER PRODUCT #	LAMPS	QTY
	F1	1x8 CEILING MOUNT FIXTURE	LITHONIA LIGHTING DMX 2 32 MVOLT GEB10RS	2-T8 32W FLOURESCENT MVOLT	8
	F2	WALL MOUNTED FIXTURE	LITHONIA LIGHTING - TWR1 LED 3 40K MVOLT PE	LED-55W MVOLT	4
	F3	WALL MOUNTED FIXTURE W/90 MIN. BATTERY BACKUP	LITHONIA LIGHTING - TWR1 LED 3 40K MVOLT PE; BODINE ELI-S-100	LED-55W MVOLT	2

NOTES: 1. PROVIDE PRODUCTS BY LISTED MANUFACTURER OR EQUAL.



DAMMON ENGINEERING, INC.
554 Old Spanish Trail, Slidell, LA 70458
PH: 985.649.5832

Chief Engineer: Brian Wistich, PE
554 Old Spanish Trail, Slidell, LA 70458

REVISIONS

#	DESCRIPTION	DATE

SEAL:

WASH RACK BLUELINE RENTALS

2480 DESTREHAN AVENUE
HARVEY, LOUISIANA 70059
JOB NO: 221R DATE: 13 APRIL 2016
DRAWN BY: BAW
CHECKED BY: DFP

SHEET TITLE: ELECTRICAL PLAN
DRAWING NUMBER: **E101**
SHEET No: 5 of 6