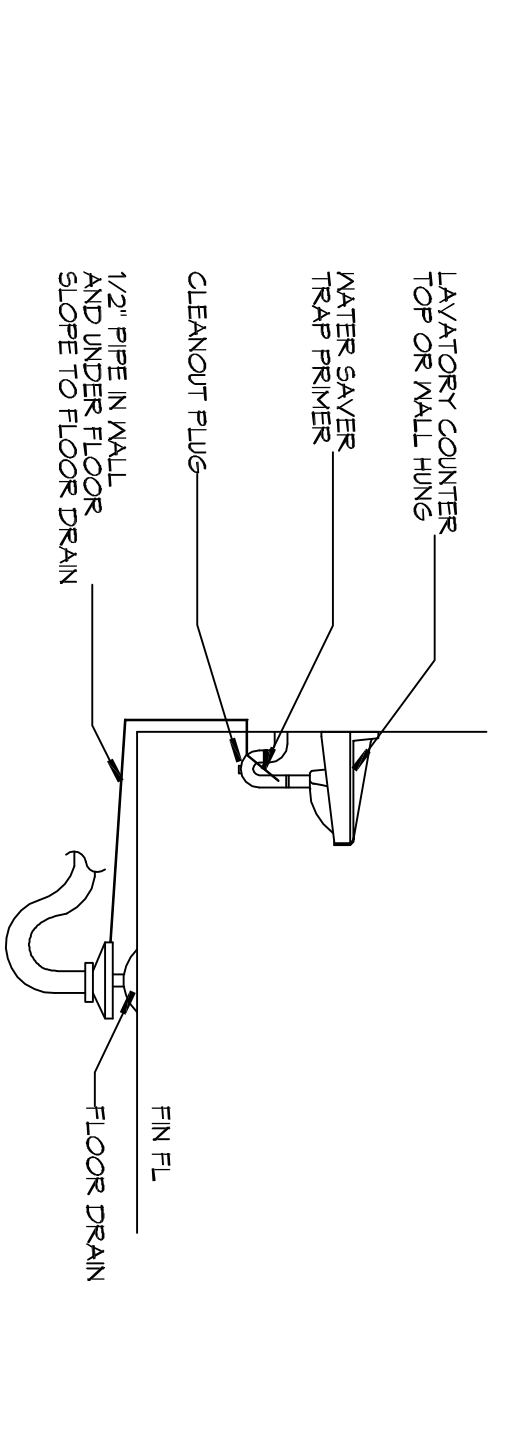
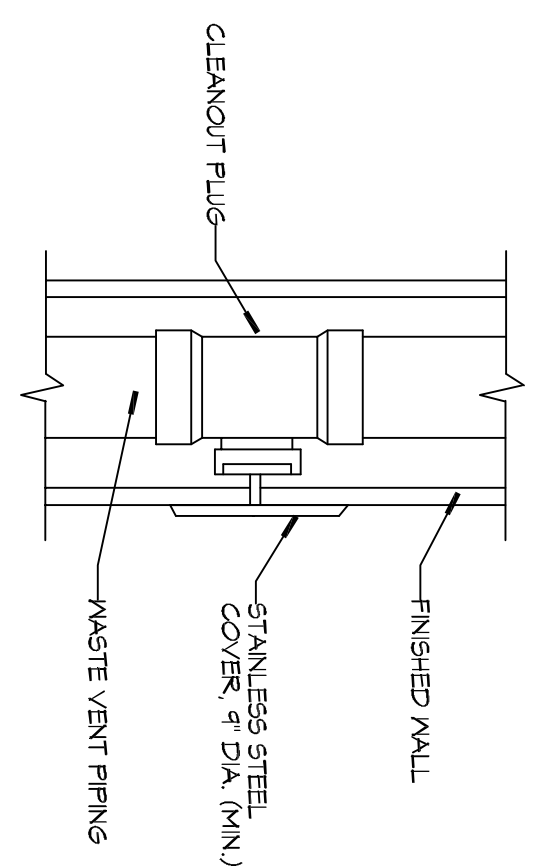


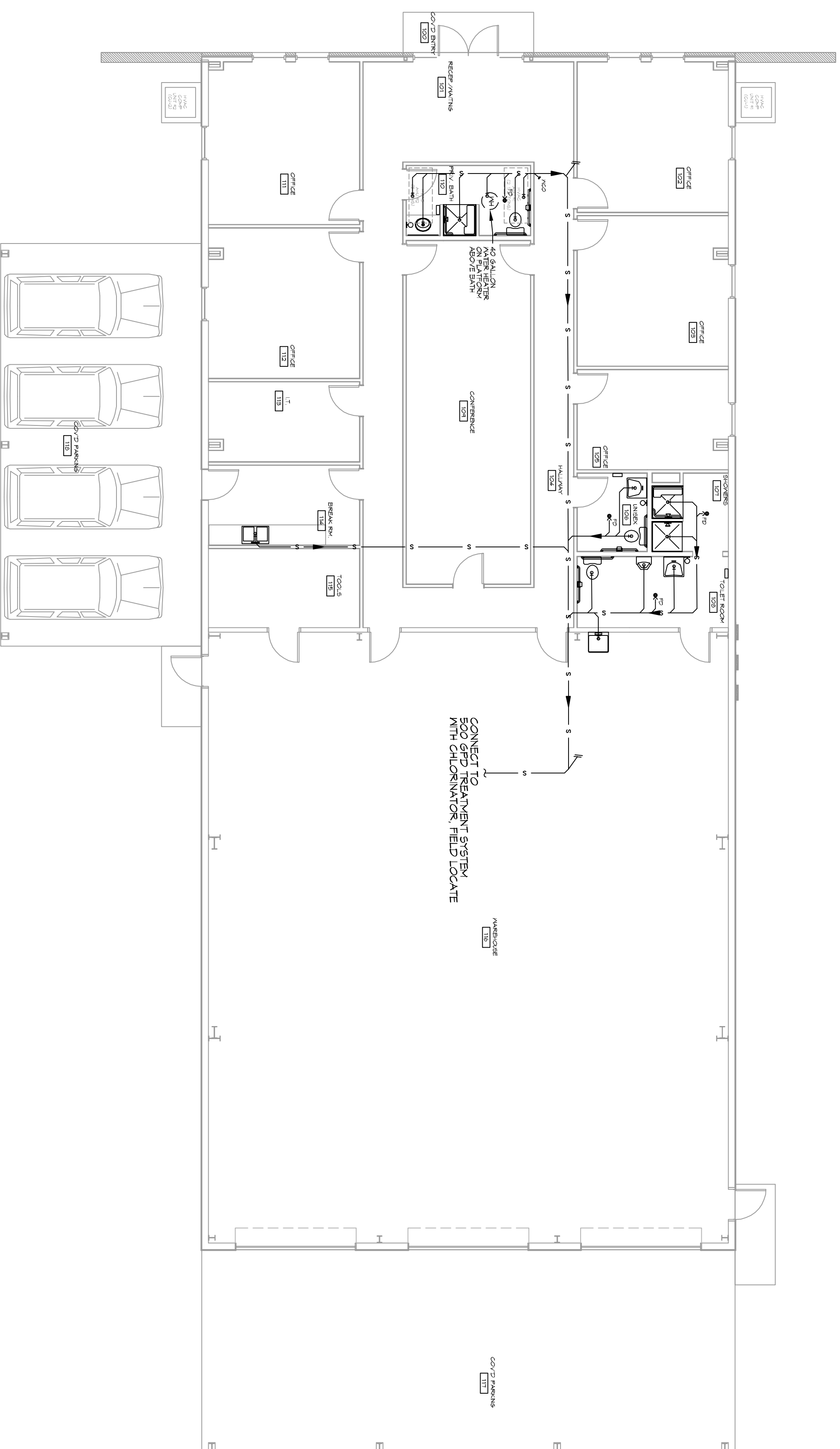
**20 PLUMBING RISER DIAGRAM**  
SCALE: NTS



**21 TYPICAL DETAILS**  
SCALE: NTS  
MISCELLANEOUS PLUMBING



**22 TYPICAL DETAILS**  
SCALE: NTS  
MISCELLANEOUS PLUMBING



**19 PLUMBING PLAN**  
SCALE: 3/8"=1'-0"

**GENERAL NOTES**

- PLUMBING LINES SHOWN ARE DRAWN DIAGNOSTIC IN NATURE AND REPRESENT CONCEPTUAL SCOTTING ONLY. CONTRACTOR IS RESPONSIBLE FOR FIELD VERIFICATION OF ALL ACTUAL CONDITIONS.
- PROVIDE ALL LABOR, MATERIAL, TRANSPORTATION, SUPERVISION, CLEAN-UP, SERVICES, AND EQUIPMENT FOR A COMPLETE OPERATING SYSTEM. THE SYSTEM SHALL INCLUDE HOT AND COLD WATER PIPING, SEWER AND VENT PIPING, INSULATION, WATER HEATER, HANGERS, VALVES, SUPPORTS WITH/OUT ANTI VIBRATION TO VOLUME, HOT AND COLD WATER, INSULATION, VALVES, SUPPORTS WITH/OUT ANTI VIBRATION AND MATERIAL SHALL COVER STRUCTURE TO THE LAYER LOCAL CITY RAINFALL STATE AND NATIONAL CONSERVATION CODES. RIGHT IN THE LAYER CODE 2018 BEARINGS.
- CONTRACTOR IS TO PROVIDE ALL NECESSARY FIELD FOR THE UTILITIES CONNECTIONS.
- CONTRACTOR IS RESPONSIBLE TO VERIFY THE EXISTING INVERTS AND SET NEW INVERTS OF SEWERAGE AND DRAINAGE PIPES.
- SEWERAGE LINES 3-INCH AND SMALLER SHALL BE SLOPED 1/4" PER FOOT AND LINES 4-INCH AND LARGER SHALL BE 1/8" PER FOOT.
- TEST ALL PIPING AT REQUIRED PRESSURE.
- ALL PLUMBING SHALL BE CLOSER TO COORDINATE WITH STRUCTURAL, MECHANICAL SYSTEM AND ELECTRICAL SYSTEMS TO INSURE NO TRADES WILL CONFLICT WITH EACH OTHER.
- DO NOT SCALE DRAWINGS. SEE ARCHITECTURAL DRAWINGS FOR EXACT LOCATIONS OF DOORS, WINDOWS, WALLS, FIXTURES, ETC.
- ALL WATER WANG AND PIPING NOT SHOWN FOR CLARITY. ALL LOCATIONS FIELD VERIFIED.
- DO NOT HOT AND COLD WATER PIPING AND FITTINGS ABOVE SLAB SHALL BE A578 A88 COPPER WATER TUBE TYPE K. SOFT ANNEALED. NO UNITS SHALL BE ALLOWED UNDER THE SLAB.
- DO NOT HOT AND COLD WATER PIPING AND FITTINGS ABOVE THE SLAB SHALL BE A578 B88 COPPER WATER TUBE TYPE L. HARD DRAWN WITH COPPER PRESSURE TIGHT FITTINGS. ANSI B16.22. THE UNITS SHALL BE SOLDERED USING ASTM B32. ALLOW GRADE 484 (95.5) SOLDER.
- SOIL WASTE VENT PIPING AND FITTINGS ABOVE THE SLAB SHALL BE SERVICE WEIGHT CAST IRON PIPE WITH BELL AND SPOUT ENDS AND ONE PIECE NEOPRENE INSERT TYPE GASKET. USE PVC SCHEDULE 40 OR ABS DWP PIPES AND FITTINGS WHERE PERMITTED BY CODE.
- ALL WATER PIPING AND FITTINGS ABOVE THE FLOOR SHALL BE INSULATED WITH 1/2" THICK FIBERGLASS INSULATION AND JACKET.
- ALL ELECTRICAL, MECHANICAL AND PLUMBING ELEMENTS PENETRATING FIRE PARTITIONS SHALL BE FIRE CALLED. (PENETRATIONS THROUGH EXISTED CONSTRUCTION SHALL BE SEALED WITH A MATERIAL CAPABLE OF PREVENTING THE PASSAGE OF FLAMES AND HOT GASES WHEN TESTED IN ACCORDANCE WITH ASTM-E814.)
- SEE ROOF PLAN FOR PLUMBING ROOF PENETRATIONS. ROUTE VENT PIPES IN ATTIC AS NECESSARY.
- ALL VENTS THROUGH ROOF (VTS) SHALL BE LOCATED A MINIMUM OF 10'-0" FROM ANY MECHANICAL OR NATURAL AIR INTAKE.

**PLUMBING ABBREVIATIONS**

US	UTILITY SINK	WCO	WALL CLEAN OUT
LAV	LAVATORY		
WC	WATER CLOSET		
UR	URINAL		
FD	FLOOR DRAIN		
SH	SHOWER		

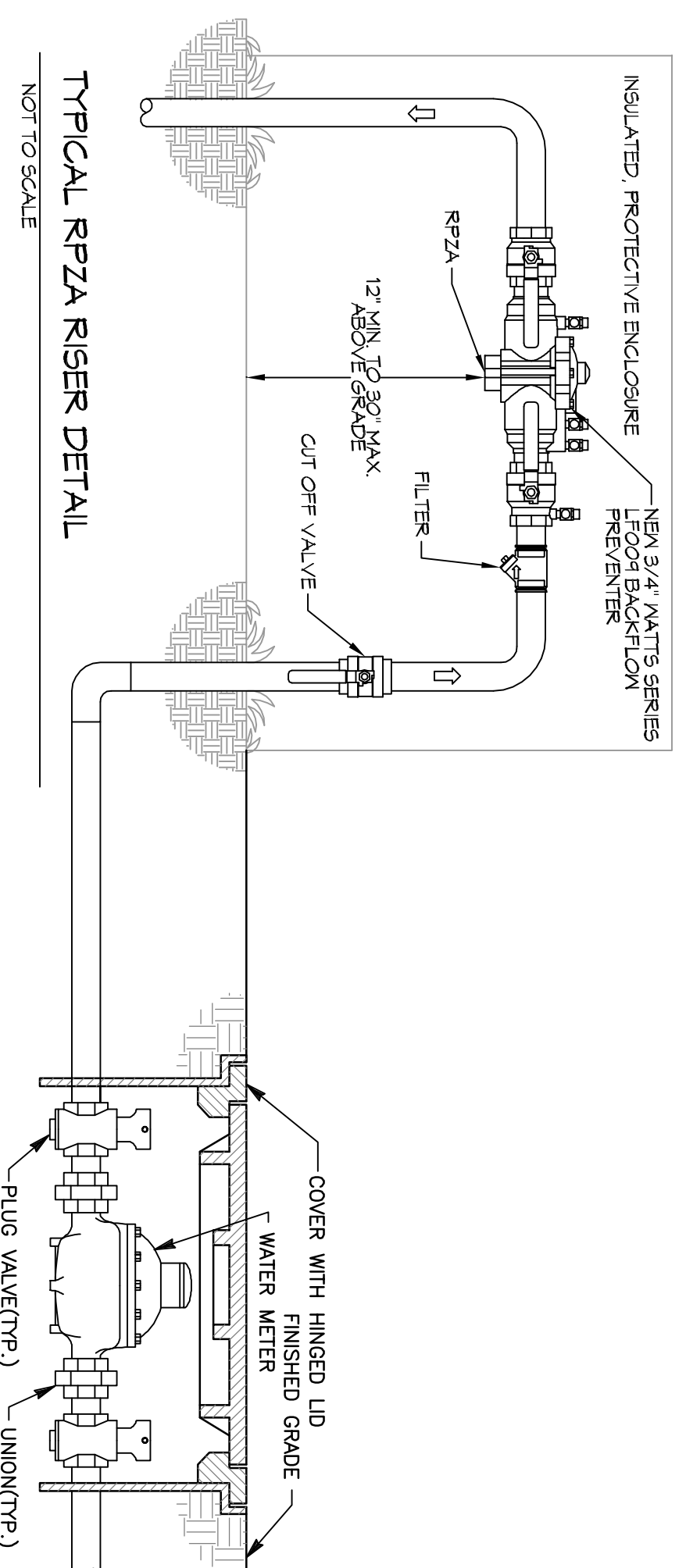
**LEGEND**

—S—S—	SANITARY SEWER
—V—V—	VENT PIPE
—FD—	FLOOR DRAIN
— CO—	LINE CLEAN OUT
— WCO—	WALL CLEAN OUT

**PLUMBING FIXTURE SCHEDULE**

ITEM	DESCRIPTION	SOIL	COLD	HOT	REMARKS
WC	WATER CLOSET	4"	3"	1"	FLUSH VALVE MATCH EXISTING
LAV	LAVATORY	1-1/2"	2"	1/2"	MATCH EXISTING
US	UTILITY SINK	3"	2"	1/2"	FAT MODEL #489 2424 OR EQUAL, 24"x24"x10" FIBERGLASS BASIN WITH MODEL #890-AM FAUCET WITH VACUUM BREAKER AND PAL HOOK, AND MODEL #894-CC OR EQUAL, NCP HANGER COATED CAST IRON WITH ADJUSTABLE NICKEL BRONZE GATE TRAP FRICTION CONNECTION AND DEEP SEAL TRAP EQUAL TO JAY R. SMITH 2010-B-F
FD	FLOOR DRAIN	3"	2"	—	MADE #V4-453-R6 OR EQUAL, CAST IRON IN ADJUSTABLE HOUSING, ROUND HEAVY CAST IRON VANDAL PROOF TOP.
FCO	FLOOR CLEAN OUT	—	—	—	MADE #V4-453-R6 OR EQUAL, WITH BRASS PLUG AND ROUND STAINLESS STEEL SECURED ACCESS COVER.
WCO	WALL CLEAN OUT	—	—	—	—

**TYPICAL RPZA RISER DETAIL**



NOTE: ALL CONNECTIONS TO POTABLE WATER SYSTEMS SHALL BE PROTECTED WITH AN APPROVED BACK-FLOW PREVENTER.

**DAMMON ENGINEERING, INC.**  
LOUISIANA & MISSISSIPPI

Chief Engineer: Brian Mistich, PE  
554 Old Spanish Trail  
Slidell, LA 70458

www.dammonengineering.com  
info@dammonengineering.com  
PH: 985.649.5832



**NEIGLER TIMBER CO.**

LA. HWY 1025 DEER CROSS DRIVE  
MADISONVILLE, LA 70447

JOB No: 2383 DATE: 7-25-2018  
DRAWN BY: CKD CHECKED BY: BAM

**P101**

NEW OFFICE WAREHOUSE  
SHEET TITLE: PLUMBING PLAN  
DRAWING NUMBER:  
SHEET NO. 3 OF 3