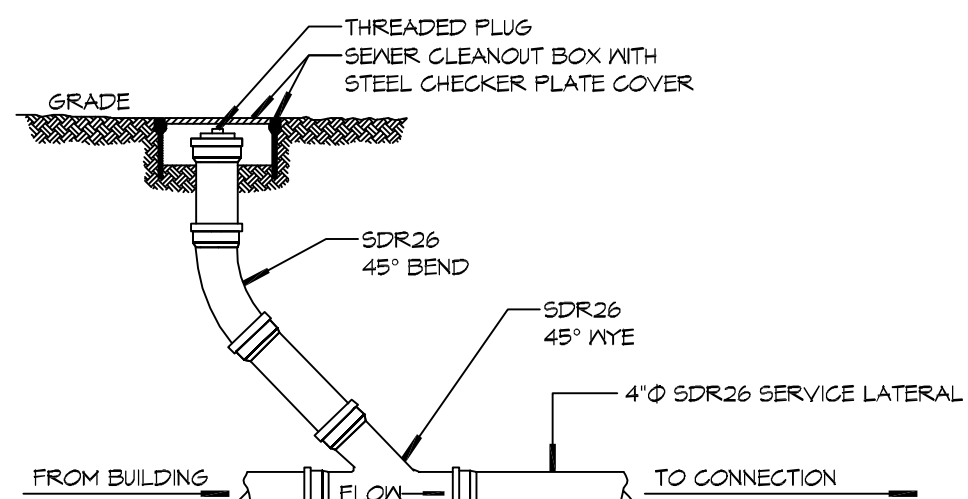
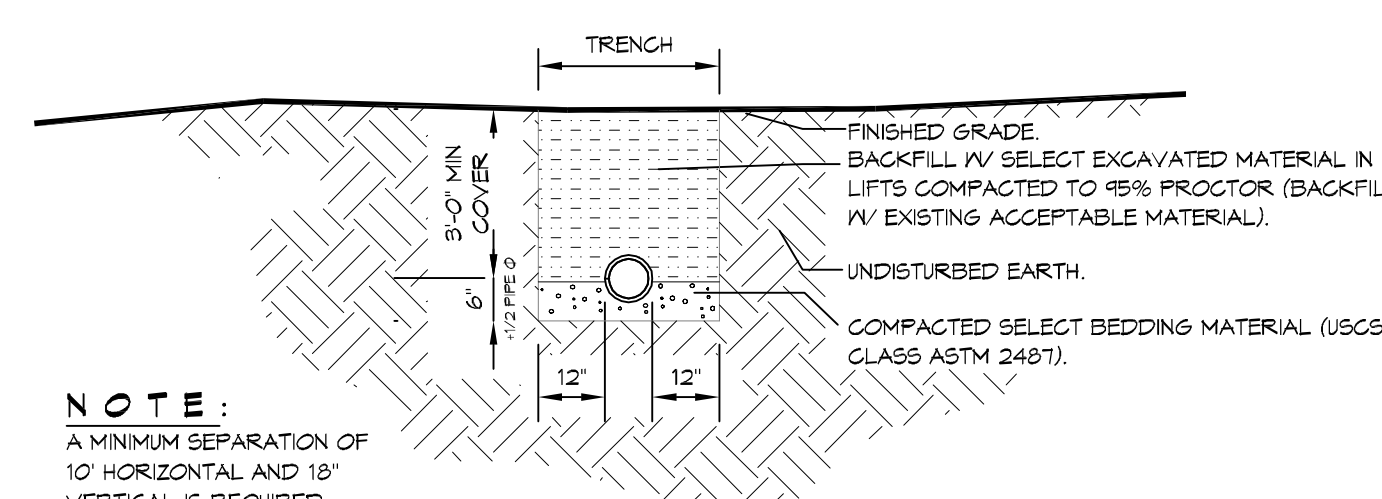


2 DETAIL
SCALE: N.T.S. TYPICAL PIPE BEDDING



3 DETAIL
SCALE: N.T.S. SEWER CLEAN OUT



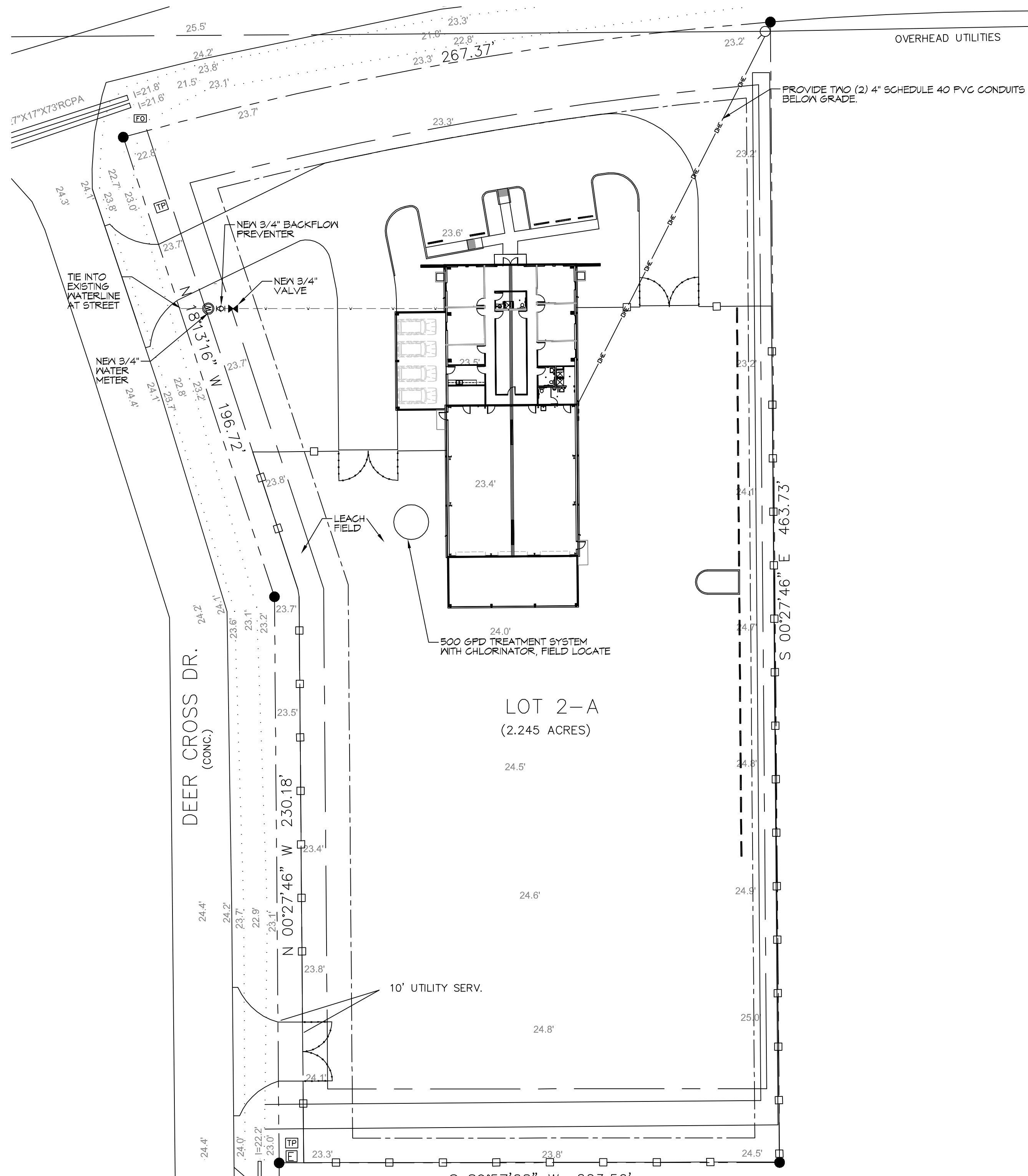
4 DETAIL
SCALE: N.T.S. SEWER AND WATER SEPERATION

GENERAL SITE NOTES

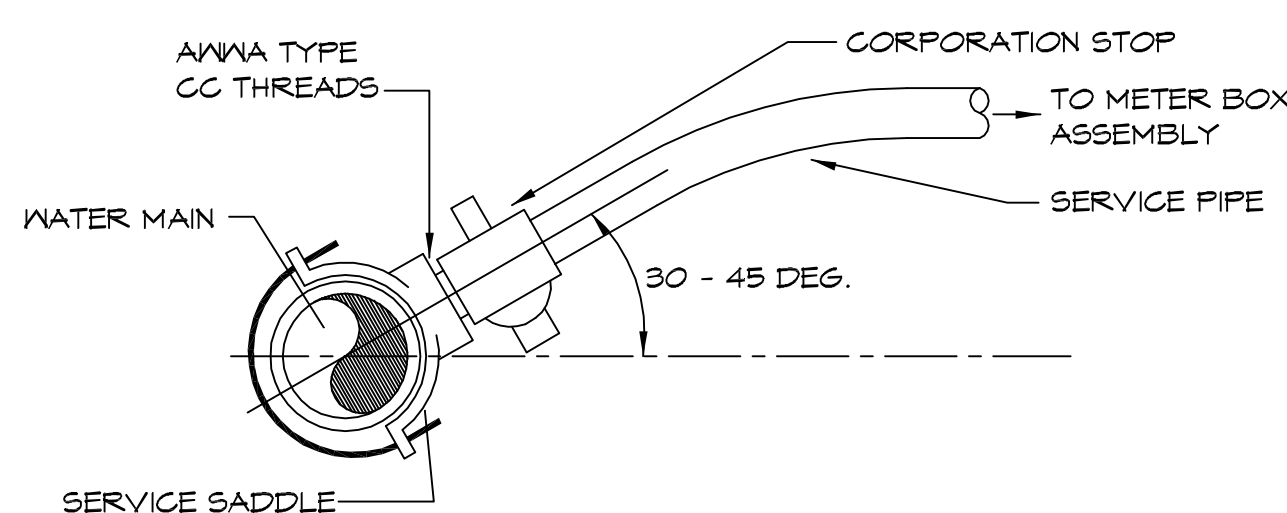
1. PROVIDE ALL LABOR, MATERIAL AND EQUIPMENT FOR A COMPLETE OPERATING SYSTEM. CONTRACTOR IS TO FIELD VERIFY ALL EXISTING UTILITY LOCATIONS, ELEVATIONS, AND INVERTS PRIOR TO COMMENCING ANY WORK. CONTRACTOR SHALL PAY NECESSARY FEES FOR THE UTILITIES CONNECTIONS.
2. CONTRACTOR TO BE RESPONSIBLE TO VERIFY ANY INVERTS AND SET NEW INVERTS OF SEWAGE AND DRAINAGE PIPES.
3. ALL WORK AND MATERIAL TO COMPLY STRICTLY TO THE LATEST LOCAL CITY PARISH, STATE, AND NATIONAL GOVERNING CODES.
4. SEWAGE LINES 3" AND SMALLER SHALL BE SLOPED 1/4" PER FOOT AND LINES THAT ARE 4" AND LARGER SHALL BE SLOPED 1/8" PER FOOT.
10. CONTRACTOR SHALL CONTACT LOUISIANA ONE CALL PRIOR TO COMMENCEMENT OF SITE EXCAVATION.

SITE UTILITIES LEGEND

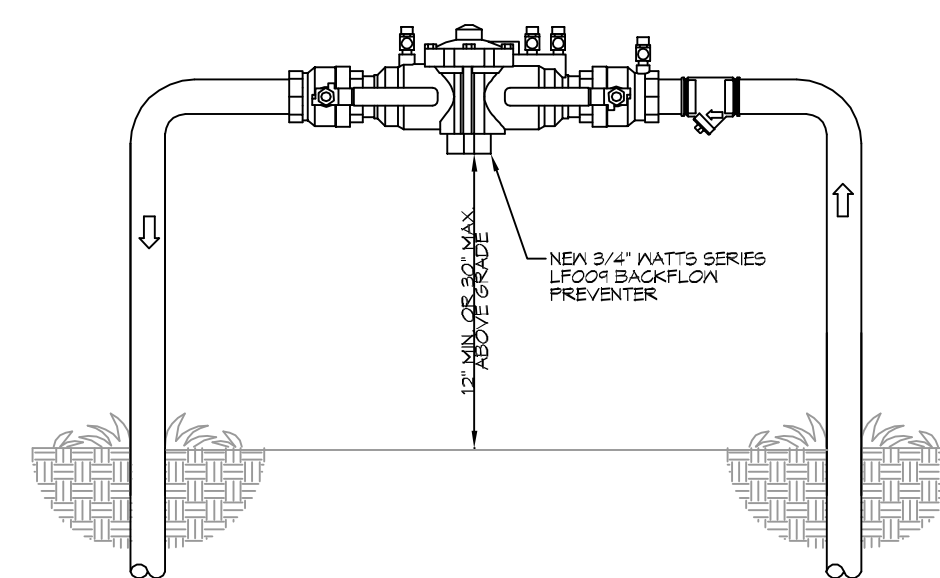
- - - - - NEW WATER LINE
- - - - - NEW ELECTRICAL LINE



1 SITE UTILITY PLAN
SCALE: 1" = 30'-0"



5 WATER SERVICE CONNECTION
SCALE: N.T.S. TYPICAL



6 TYPICAL RISER DETAIL
SCALE: N.T.S. TYPICAL

CONTRACTOR SHALL CONTACT TAMMANY UTILITIES, (TU) @ 985-8493-1717 REGARDING WATER AND SEWERAGE AVAILABILITY. WATER COULD BE AVAILABLE THROUGH A BORE. SEWERAGE MAY BE AVAILABLE WITH THE INSTALLATION OF A LIFT STATION. IF TU DETERMINES WATER AND OR SEWERAGE IS NOT AVAILABLE, YOU MUST CONTACT THIS OFFICE FOR FURTHER DISCUSSION AND OR INSTRUCTIONS. GRETCHEN SEYMOUR 09-06-19

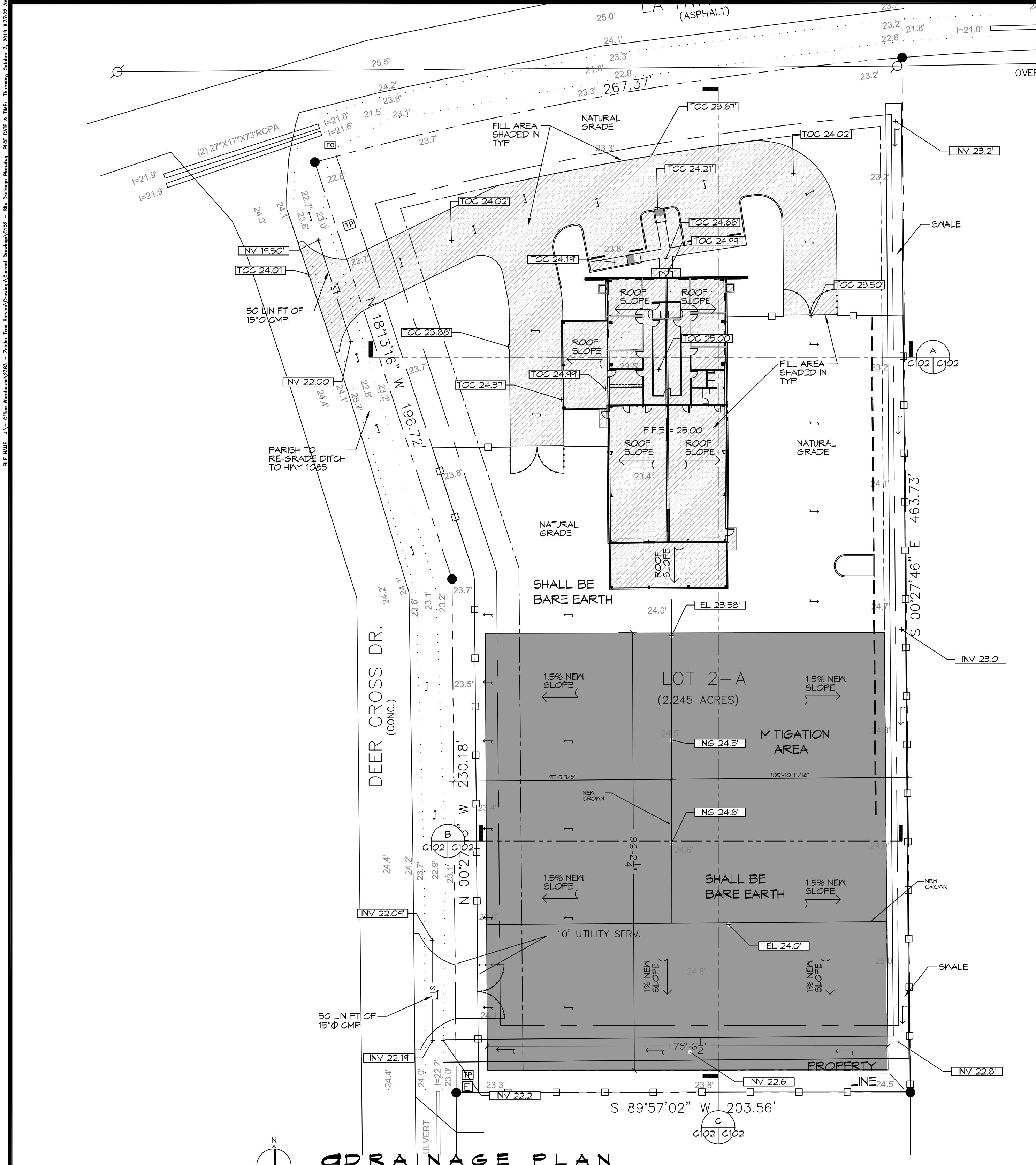
DAMMON ENGINEERING, INC.
LOUISIANA & MISSISSIPPI
www.dammonengineering.com
info@dammonengineering.com
PH: 985.847.1828
Chief Engineer: Brian Mestich, PE
356 Old Spanish Trail
Shreveport, LA 71208

#	DESCRIPTION	REVISIONS	DATE

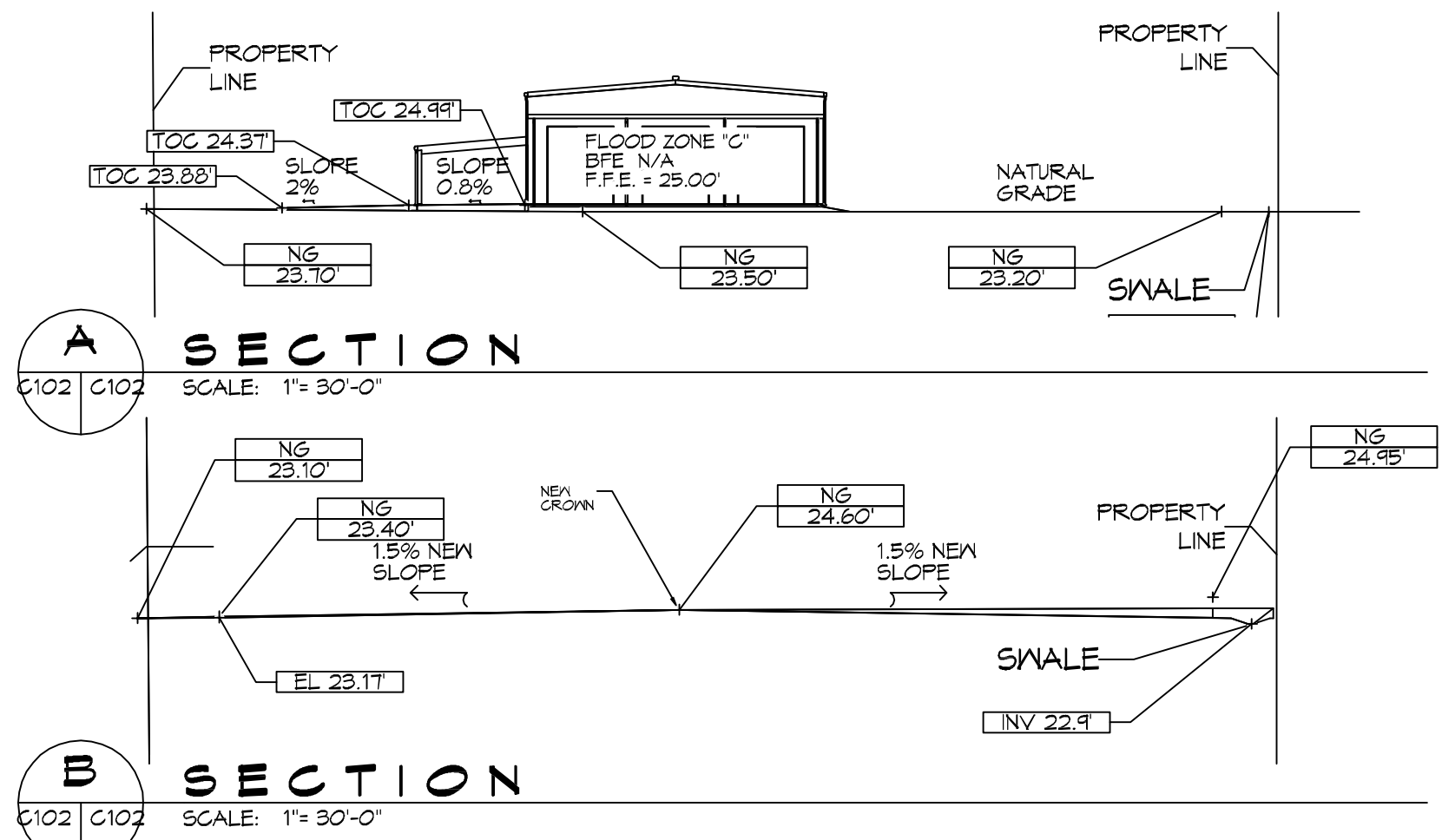
SEAL:

NEW OFFICE WAREHOUSE
ZEIGLER, CO.
L.A. HWY 1025 DEER CROSS DRIVE
MADISONVILLE, LA 70447
JOB No: 2383 DATE: 10-03-2019
DRAWN BY: BMM CHECKED BY: CSD

SHEET TITLE:
SITE UTILITY PLAN
DRAWING NUMBER:
C100
SHEET No: 1 of 2



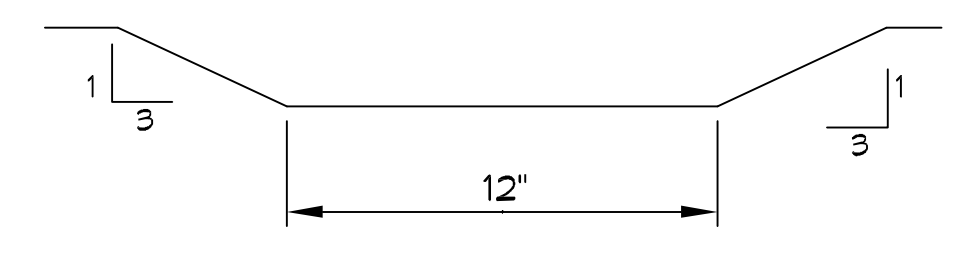
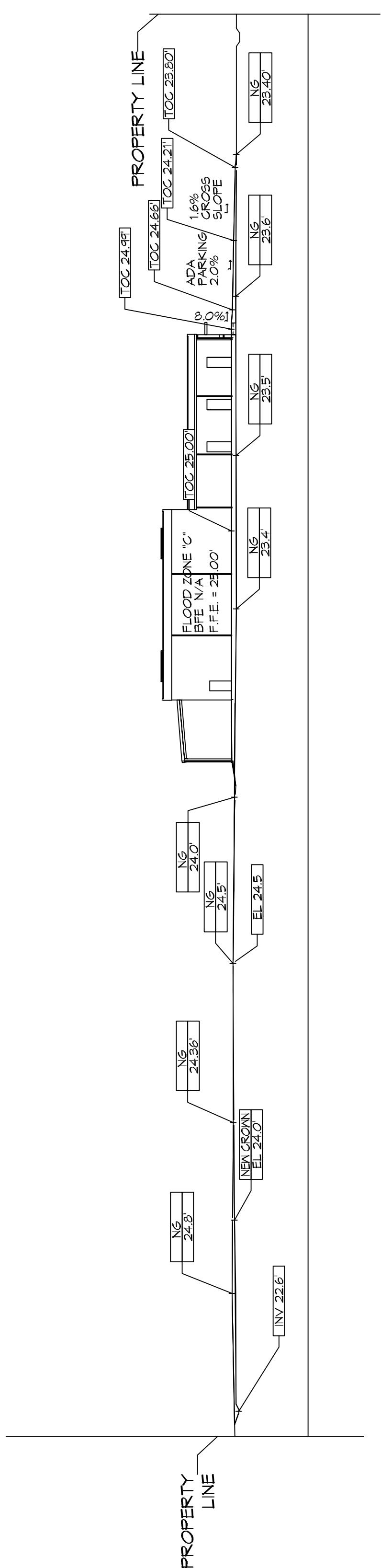
DRAINAGE PLAN
SCALE: 1" = 30'-0"



A SECTION
SCALE: 1" = 30'-0"

B SECTION
SCALE: 1" = 30'-0"

C MITIGATION SECTION
SCALE: 1" = 30'-0"



14" SWALE
SCALE: N.T.S.

- DRAINAGE NOTES**
- ELEVATIONS SHOWN ARE MSL.
 - FIELD VERIFY ALL ELEVATIONS AND DRAINAGE SYSTEM PLACEMENT PRIOR TO START OF WORK.
 - PROVIDE VERTICAL ELBOW AT DOWNSPOUTS WITH SPLASH BLOCKS.
- DRAINAGE LEGEND**
- TOC XXXX — TOP OF CONCRETE ELEVATION
 - TOG XXXX — TOP OF GRATE ELEVATION
 - INV XXXX — INVERT OF PIPE ELEVATION
 - IS — CMP (CORRUGATED METAL PIPE) DRAINAGE OF FLOW ARROW. SEE PLAN FOR SIZE
 - EL XXXX — NEW ELEVATION
 - NG XXXX — NATURAL GRADE
 - ← — SLOPE

DAMMON ENGINEERING, INC.
LOUISIANA & MISSISSIPPI

Chief Engineer: Brian Mestich, P.E.
www.dammonengineering.com
554 Old Spanish Trail
Shreveport, LA 71208
Phone: 848.671.8282

#	DESCRIPTION	DATE	REVISIONS
1	REVISED CUT/FILL CALCS	9/26/2019	



NEW OFFICE WAREHOUSE
ZEIGLER TREE & TIMBER CO.

L.A. HWY 1085 DEER CROSS DRIVE
MADISONVILLE, LA 70447

JOB No: 2383 DATE: 10-03-2019
DRAWN BY: BMM
CHECKED BY: C102

SHEET TITLE:
DRAINAGE AND MITIGATION PLAN

DRAWING NUMBER:
C102

SHEET No: 3 of 6

CUT/FILL CALCS

FILL MITIGATION VOLUME;	
Bldg + Rear Covered Parking	(200.7 sf x 53 ft) = 10,637.1 cf
Side Covered Parking	(23.1 sf x 40 ft) = 924.0 cf
Paving = (Drive 132.2 sf x 24 ft) + (Drive 16.1 sf x 95 ft) + (Parking 25.7 sf x 71 ft)	= 6,527.0 cf
TOTAL =	18,088 cf
CUT MITIGATION VOLUME	
Cut Volume = (119.2 s.f. x 145 ft) + (0.1 s.f. x 237 ft) + (53.7 sf x 179.5 ft)	= 26,920 cf

EXCESS CUT TO BE REMOVED OFFSITE

