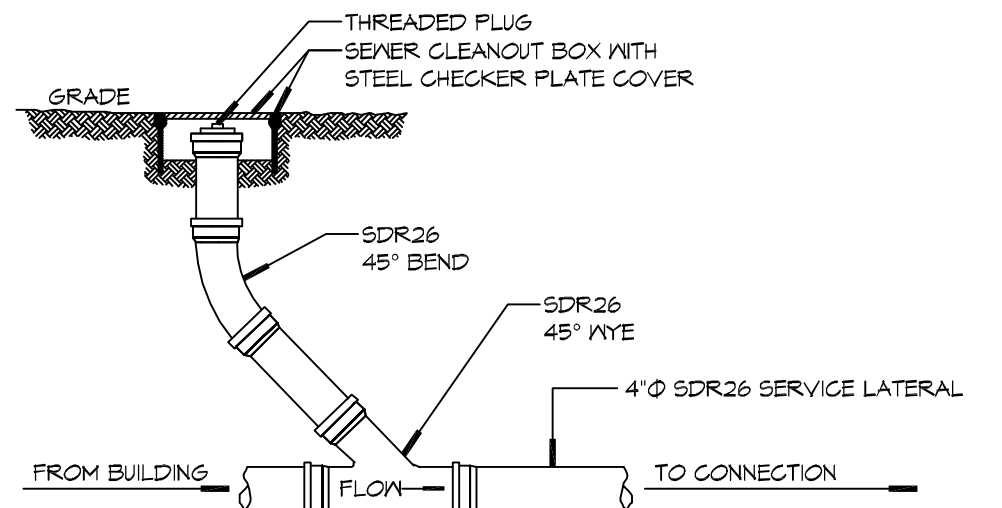
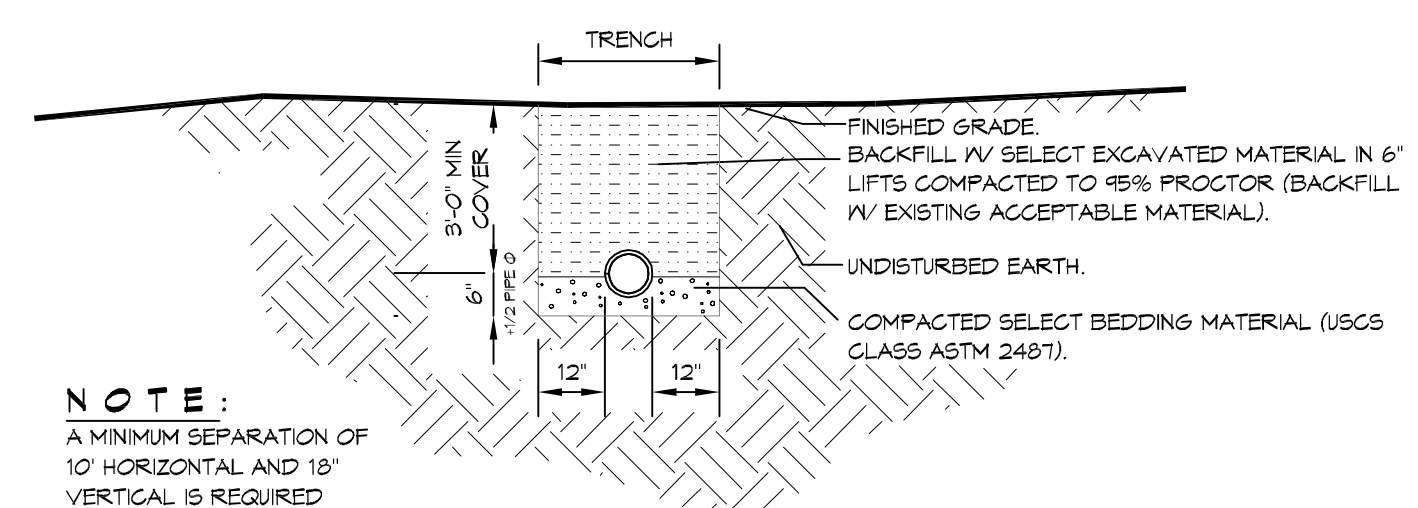


2 DETAIL
SCALE: N.T.S.
TYPICAL PIPE BEDDING



3 DETAIL
SCALE: N.T.S.
SEWER CLEAN OUT

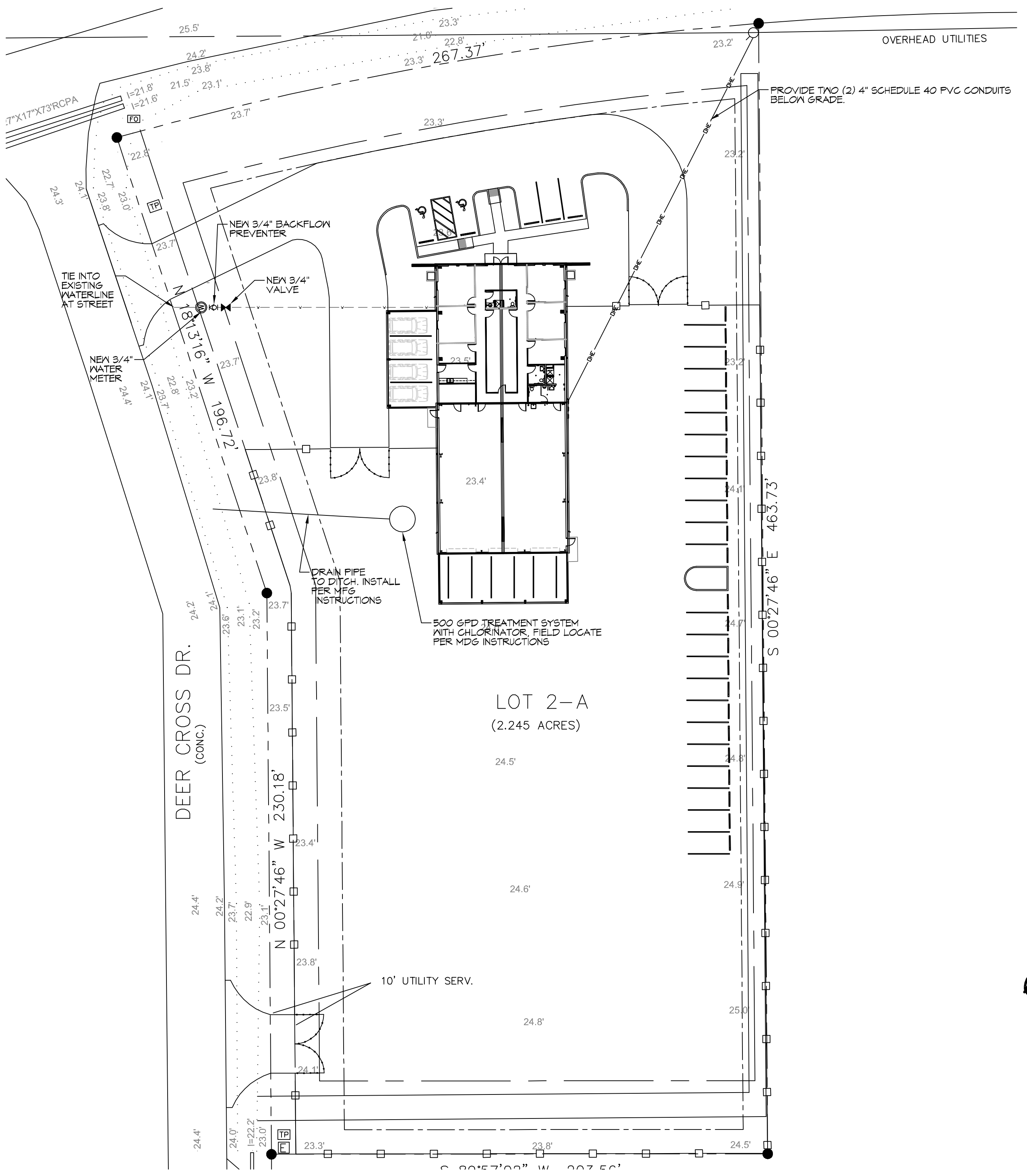
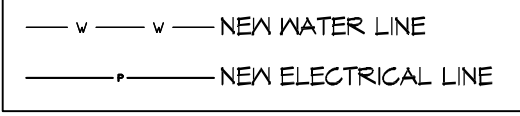


4 DETAIL
SCALE: N.T.S.
SEWER AND WATER SEPERATION

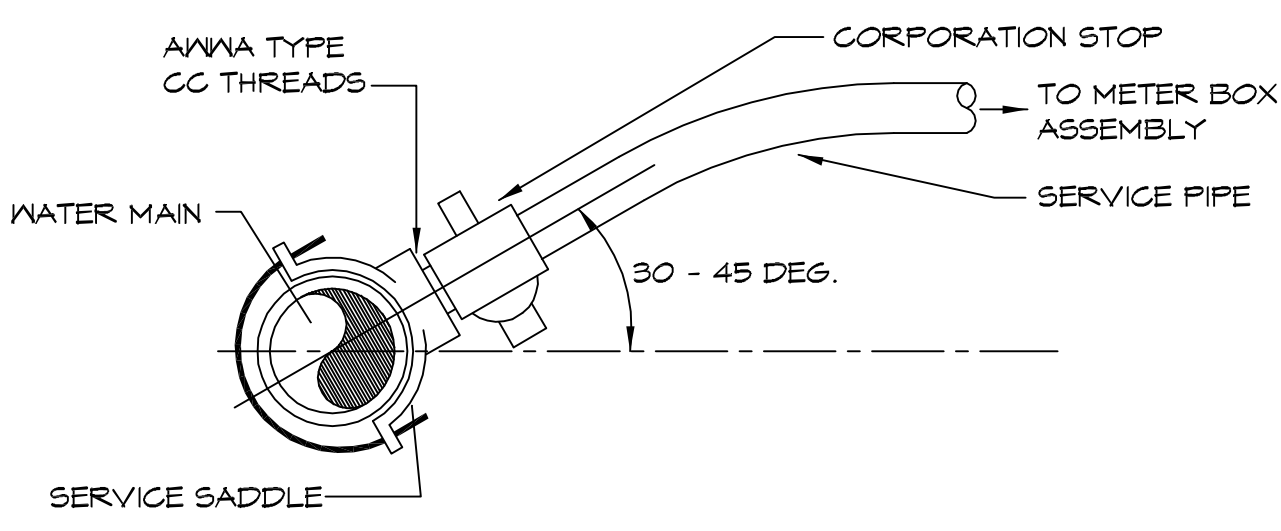
GENERAL SITE NOTES

1. PROVIDE ALL LABOR, MATERIAL AND EQUIPMENT FOR A COMPLETE OPERATING SYSTEM. CONTRACTOR IS TO FIELD VERIFY ALL EXISTING UTILITY LOCATIONS, ELEVATIONS, AND INVERTS PRIOR TO COMMENCING ANY WORK. CONTRACTOR SHALL PAY NECESSARY FEES FOR THE UTILITIES CONNECTIONS.
2. CONTRACTOR TO BE RESPONSIBLE TO VERIFY ANY INVERTS AND SET NEW INVERTS OF SEWAGE AND DRAINAGE PIPES.
3. ALL WORK AND MATERIAL TO COMPLY STRICTLY TO THE LATEST LOCAL CITY PARISH, STATE, AND NATIONAL GOVERNING CODES.
4. SEWAGE LINES 3" AND SMALLER SHALL BE SLOPED 1/4" PER FOOT AND LINES THAT ARE 4" AND LARGER SHALL BE SLOPED 1/8" PER FOOT.
10. CONTRACTOR SHALL CONTACT LOUISIANA ONE CALL PRIOR TO COMMENCEMENT OF SITE EXCAVATION.

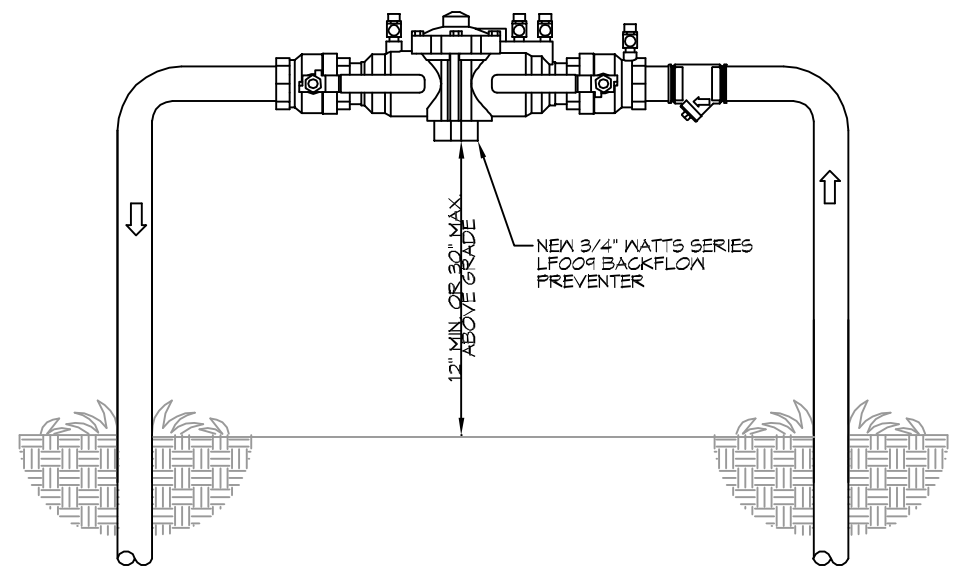
SITE UTILITIES LEGEND



1 SITE UTILITY PLAN
SCALE: 1" = 30'-0"



5 WATER SERVICE CONNECTION
SCALE: N.T.S.
TYPICAL



6 TYPICAL RISER DETAIL
SCALE: N.T.S.
TYPICAL

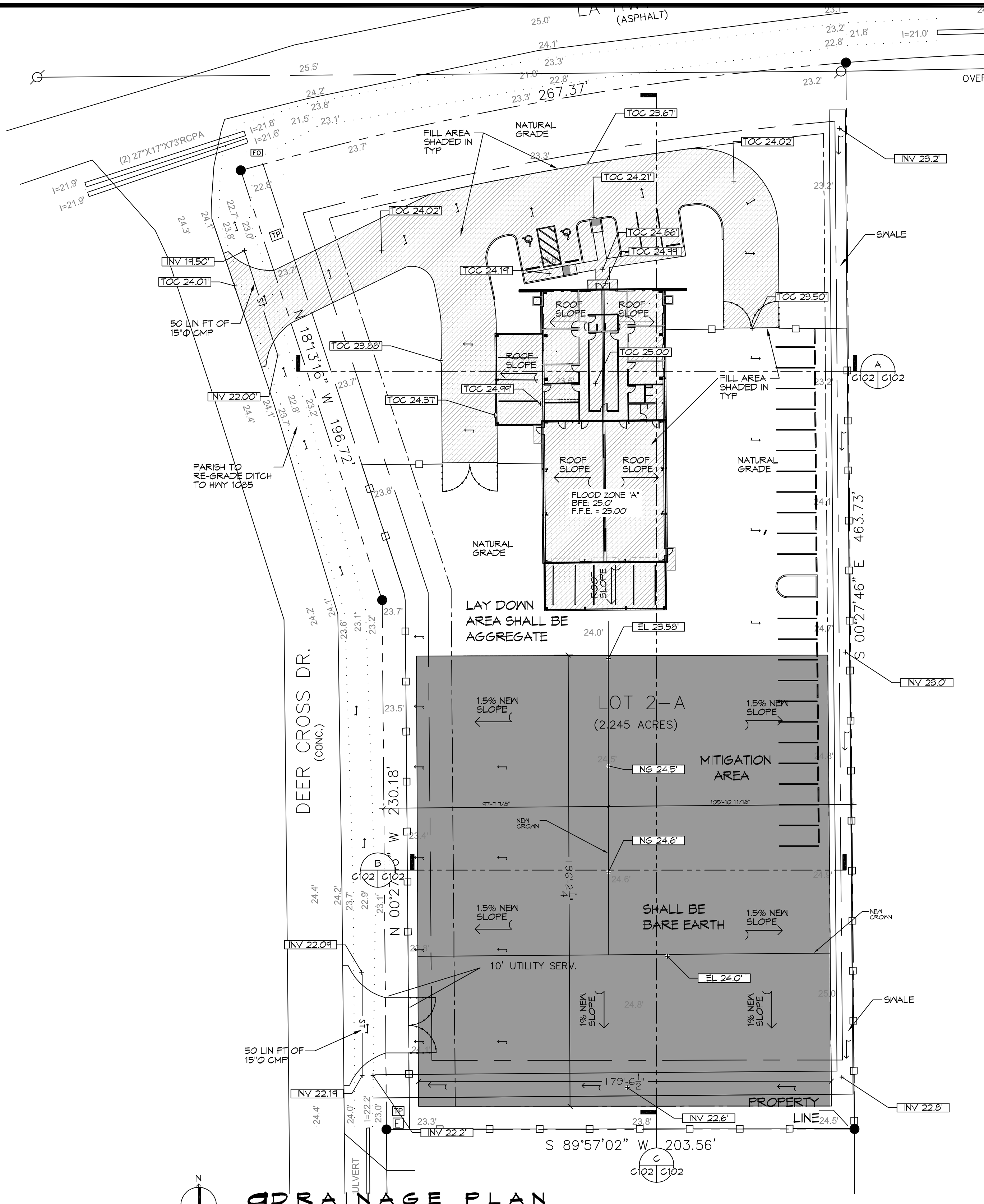
CONTACT TAMMANY UTILITIES,
@ 985-893-1717 FOR WATER TIE IN.

DAMMON ENGINEERING, INC.
LOUISIANA & MISSISSIPPI
www.dammonengineering.com
info@dammonengineering.com
PH: 985-897-1828
Chief Engineer: Brian Mestich, PE
356 Old Spanish Trail
Shreveport, LA 71208

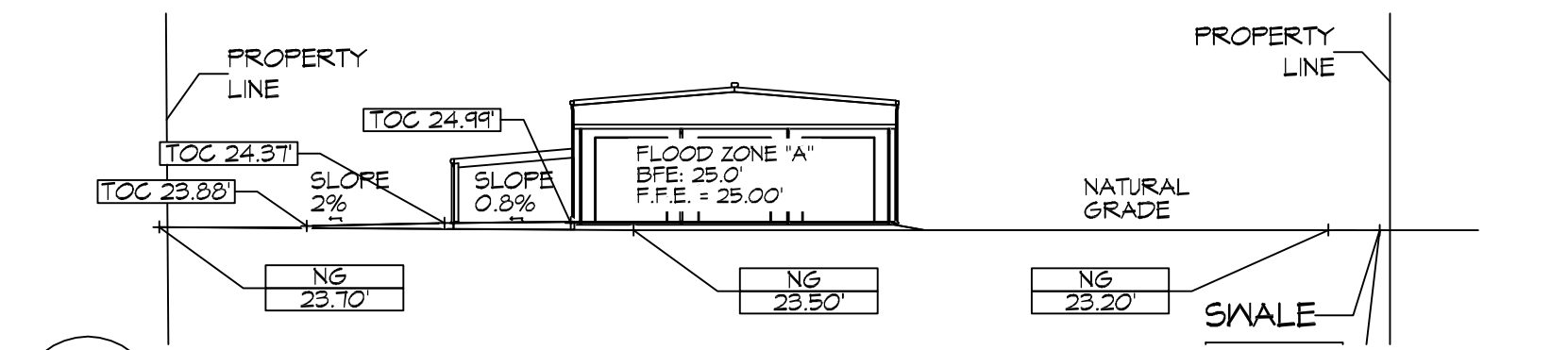
#	DESCRIPTION	REVISIONS	DATE

SEAL:
STATE OF LOUISIANA
BRIAN A. MESTICH
License No. 30187
PROFESSIONAL ENGINEER
BAM

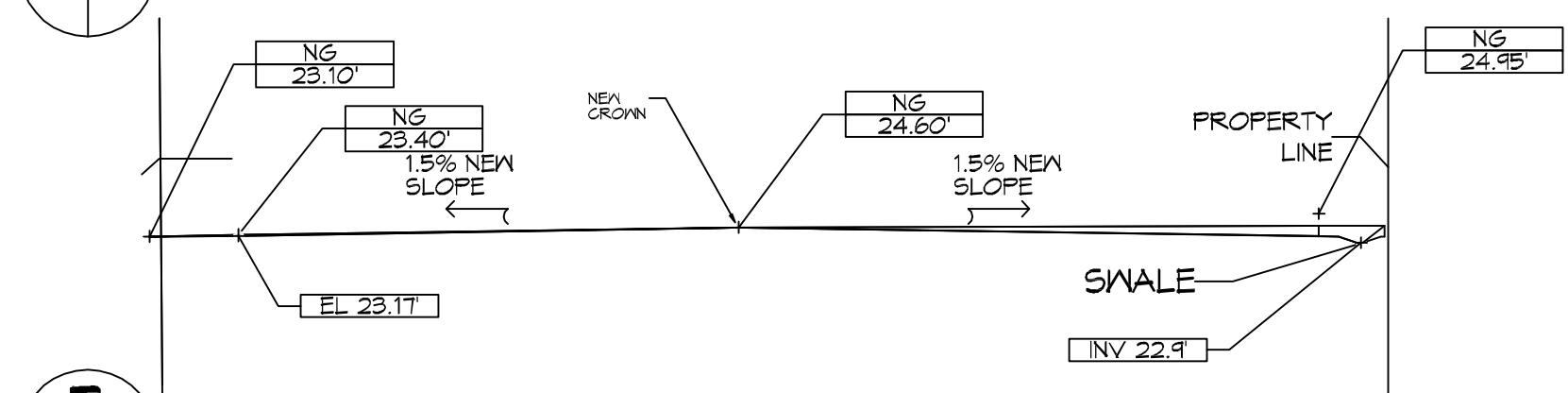
NEW OFFICE WAREHOUSE
ZEIGLER TREE & TIMBER, CO.
L.A. HWY 1025 DEER CROSS DRIVE
MADISONVILLE, LA 70447
JOB No: 2383 DATE: 10-09-2019
DRAWN BY: CACD CHECKED BY: BMM
SHEET TITLE: SITE UTILITY PLAN
DRAWING NUMBER:
C100
SHEET No: 2 of 2



DRAINAGE PLAN
SCALE: 1" = 30'-0"

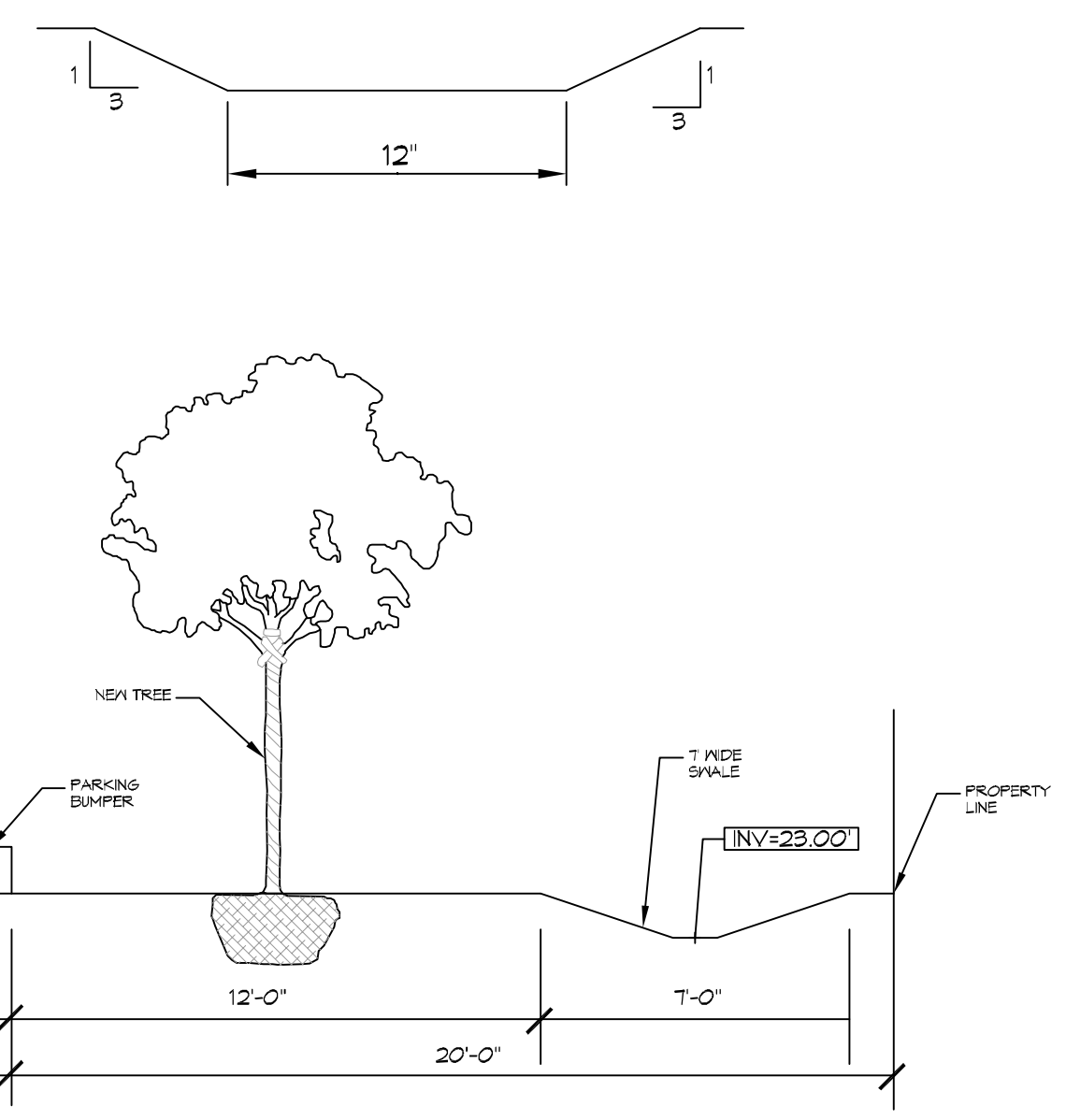
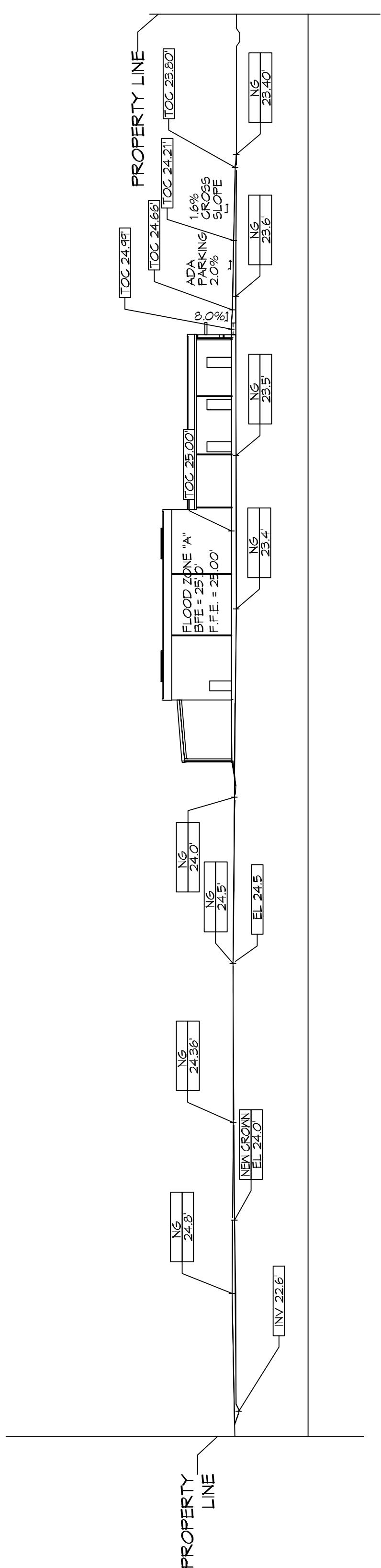


SECTION A
SCALE: 1" = 30'-0"



SECTION B
SCALE: 1" = 30'-0"

MITIGATION SECTION
SCALE: 1" = 30'-0"



14 SWALE AND PLANTABLE AREA
SCALE: N.T.S.

DRAINAGE NOTES	
1.	ELEVATIONS SHOWN ARE MSL.
2.	FIELD VERIFY ALL ELEVATIONS AND DRAINAGE SYSTEM PLACEMENT PRIOR TO START OF WORK.
3.	PROVIDE VERTICAL ELBOW AT DOWNSPOUTS WITH SPLASH BLOCKS.

DRAINAGE LEGEND	
	TOP OF CONCRETE ELEVATION
	TOP OF GRATE ELEVATION
	INVERT OF PIPE ELEVATION
	CMP (CORRUGATED METAL PIPE) DRAINAGE OF FLOW ARROW, SEE PLAN FOR SIZE
	NEW ELEVATION
	NATURAL GRADE
	SLOPE

FLOOD ZONE	
ZONE "A"	

BUILDING ELEVATION	
BASE FLOOD ELEVATION = 25.0'	
FINISHED FLOOR ELEVATION = 25.0'	

DAMMON ENGINEERING, INC.
LOUISIANA & MISSISSIPPI

Chief Engineer: Brian Mestich, P.E.
www.dammonengineering.com
554 Old Spanish Trail
Shreveport, LA 71208
Phone: 848.671.8282

REVISIONS	DATE	DESCRIPTION
1	9/26/2019	REVISED CUT/FILL CALCS



NEW OFFICE WAREHOUSE
ZEIGLER TREE & TIMBER, CO.

L.A. HWY 1085 DEER CROSS DRIVE
MADISONVILLE, LA 70447

JOB No: 2383 DATE: 10-09-2019
DRAWN BY: BMM
CHECKED BY: C102

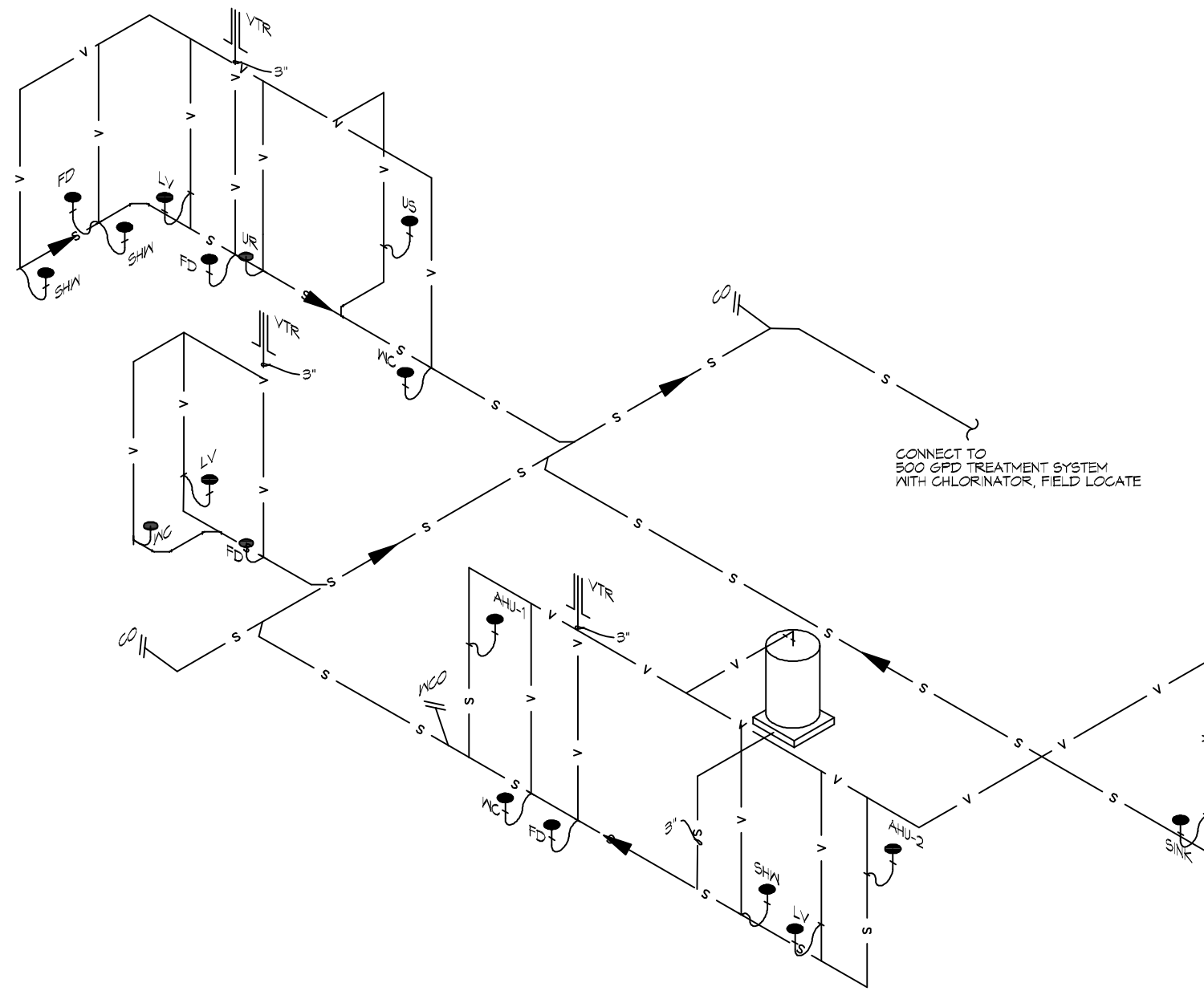
SHEET TITLE:
DRAINAGE AND MITIGATION PLAN

DRAWING NUMBER:
C102

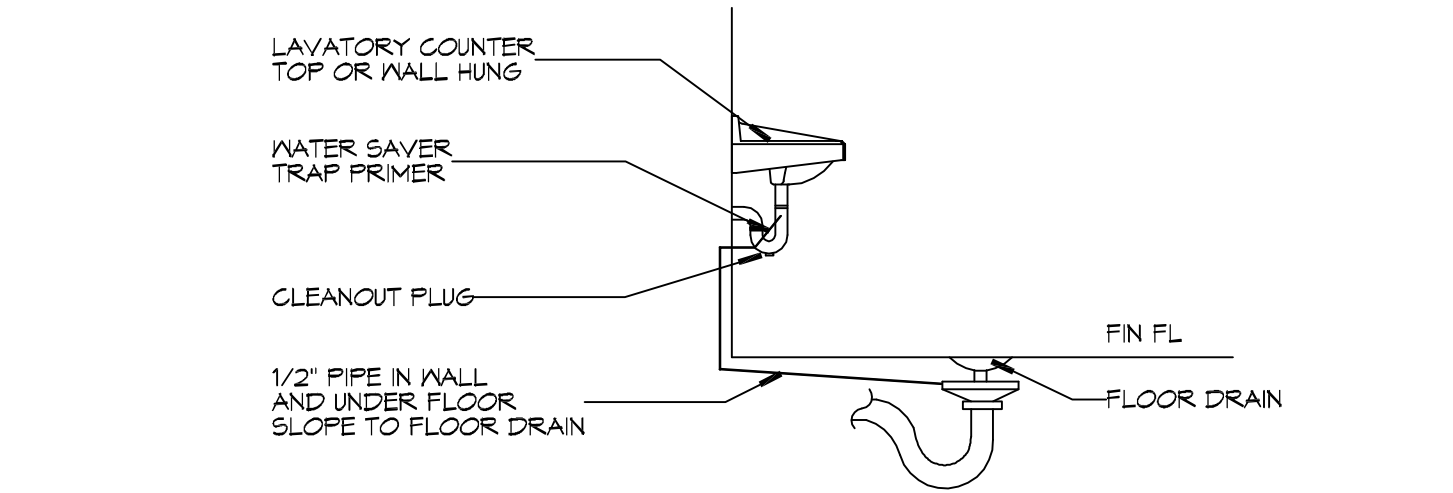
SHEET No: 4 of 4

CUT/FILL CALCS	
FILL MITIGATION VOLUME;	
Bldg + Rear Covered Parking	(200.7 sf x 53 ft) = 10,637.1 cf
Side Covered Parking	(23.1 sf x 40 ft) = 924.0 cf
Paving = (Drive 132.2 sf x 24 ft) + (Drive 16.1 sf x 95 ft) + (Parking 25.7 sf x 71 ft)	= 6,527.0 cf
TOTAL =	18,088 cf
CUT MITIGATION VOLUME	
Cut Volume = (119.2 s.f. x 145 ft) + (0.1 s.f. x 237 ft) + (53.7 sf x 179.5 ft)	= 26,920 cf
EXCESS CUT TO BE REMOVED OFFSITE	

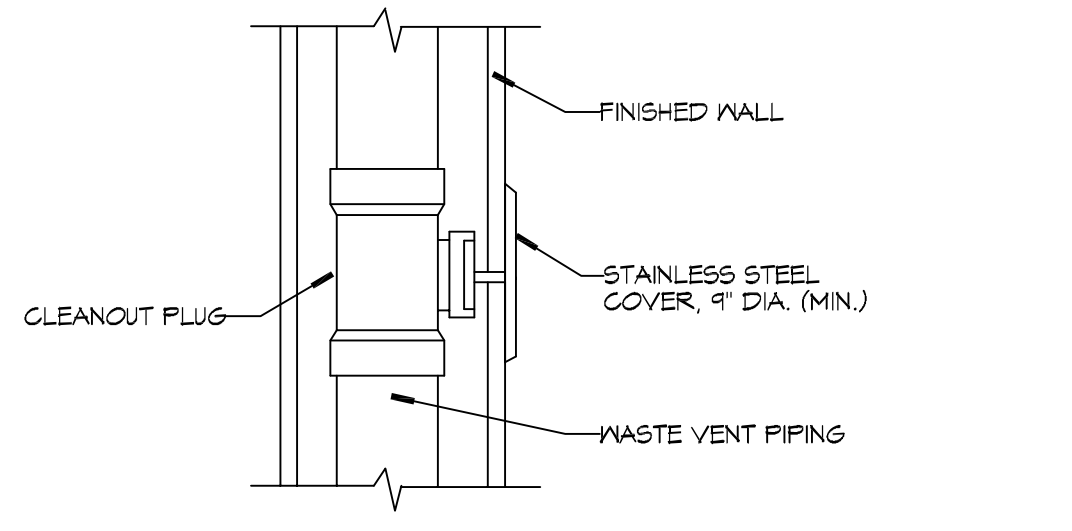
FILE NAME: I:\Projects\2018\2018-03-23\2018-03-23.dwg User: brian.mitchell Date: 10/08/2018 Time: 10:08:10 AM Plot Date: 10/08/2018 Time: 10:08:10 AM



20 PLUMBING RISER DIAGRAM
SCALE: NTS



21 TYPICAL DETAILS
SCALE: NTS MISCELLANEOUS PLUMBING



22 TYPICAL DETAILS
SCALE: NTS MISCELLANEOUS PLUMBING

GENERAL PLUMBING NOTES

- PLUMBING LINES SHOWN ARE DRAWN DIAGRAMMATIC IN NATURE AND REPRESENT CONCEPTUAL ROUTING ONLY. CONTRACTOR IS RESPONSIBLE FOR FIELD VERIFICATION OF ALL ACTUAL CONDITIONS.
- PROVIDE ALL LABOR, MATERIAL, TRANSPORTATION, SUPERVISION, CLEAN-UP, SERVICES, AND EQUIPMENT FOR A COMPLETE OPERATING SYSTEM. THE SYSTEM SHALL INCLUDE HOT AND COLD WATER PIPING, SEWER AND VENT PIPING, INSULATION, WATER HEATER, HANGERS, VALVES, SUPPORTS WITHOUT ANY RESTRICTIONS TO VOLUME, CUT AND PATCH AS REQUIRED TO INSTALL PIPES.
- ALL WORK AND MATERIAL SHALL CONFORM STRICTLY TO THE LATEST LOCAL, CITY, PARISH, STATE AND NATIONAL GOVERNING CODES. MUST MEET LA STATE PLUMBING CODE 2013 REQUIREMENTS.
- CONTRACTOR IS TO FIELD VERIFY ALL EXISTING UTILITY LOCATIONS, ELEVATIONS AND SIZES PRIOR TO COMMENCING ANY WORK. CONTRACTOR SHALL PAY NECESSARY FEES FOR THE UTILITIES CONNECTIONS.
- CONTRACTOR IS RESPONSIBLE TO VERIFY THE EXISTING INVERTS AND SET NEW INVERTS OF SEWERAGE AND DRAINAGE PIPES.
- SEWERAGE LINES 3-INCH AND SMALLER SHALL BE SLOPED 1/4" PER FOOT AND LINES 4-INCH AND LARGER SHALL BE 1/8" PER FOOT.
- TEST ALL PIPING AT REQUIRED PRESSURE.
- ALL PLUMBING SHALL BE CLOSELY COORDINATED WITH STRUCTURAL, MECHANICAL SYSTEM AND ELECTRICAL SYSTEMS TO INSURE NO TRADES WILL CONFLICT WITH EACH OTHER.
- DO NOT SCALE DRAWINGS. SEE ARCHITECTURAL DRAWINGS FOR EXACT LOCATIONS OF DOORS, WINDOWS, WALLS, FIXTURES, ETC.
- ALL WATER MAINS AND PIPING NOT SHOWN FOR CLARITY, ALL LOCATIONS FIELD VERIFIED.
- DOMESTIC HOT AND COLD WATER PIPING AND FITTINGS UNDER SLAB SHALL BE ASTM B88 COPPER WATER TUBE, TYPE K, SOFT ANNEALED. NO JOINTS SHALL BE ALLOWED UNDER THE SLAB.
- DOMESTIC WATER PIPING AND FITTINGS ABOVE THE SLAB SHALL BE ASTM B88 COPPER WATER TUBE, TYPE L, HARD DRAWN WITH COPPER PRESSURE TYPE FITTINGS, ANSI B16.22. THE JOINTS SHALL BE SOLDERED TYPE USING ASTM B32, ALLOY GRADE 85A (95-5) SOLDER.
- SOIL, WASTE, VENT PIPING AND FITTINGS ABOVE THE SLAB SHALL BE SERVICE WEIGHT CAST IRON PIPE WITH BELL AND SPIGOT ENDS AND ONE PIECE NEOPRENE INSERT TYPE GASKET. USE PVC SCHEDULE 40 OR ABS DWV PIPES AND FITTINGS WHERE PERMITTED BY CODE.
- ALL WATER PIPING AND FITTINGS ABOVE THE FLOOR SHALL BE INSULATED WITH 1/2" THICK FIBERGLASS INSULATION AND JACKET.
- ALL ELECTRICAL, MECHANICAL AND PLUMBING ELEMENTS PENETRATING FIRE PARTITIONS SHALL BE FIRE CAULKED. (PENETRATIONS THROUGH RATED CONSTRUCTION SHALL BE SEALED WITH A MATERIAL CAPABLE OF PREVENTING THE PASSAGE OF FLAMES AND HOT GASES WHEN TESTED IN ACCORDANCE WITH ASTM-E814.)
- SEE ROOF PLAN FOR PLUMBING ROOF PENETRATIONS. ROUTE VENT PIPES IN ATTIC AS NECESSARY.
- ALL VENTS THROUGH ROOF (VTR) SHALL BE LOCATED A MINIMUM OF 10'-0" FROM ANY MECHANICAL OR NATURAL AIR INTAKE.

PLUMBING ABBREVIATIONS

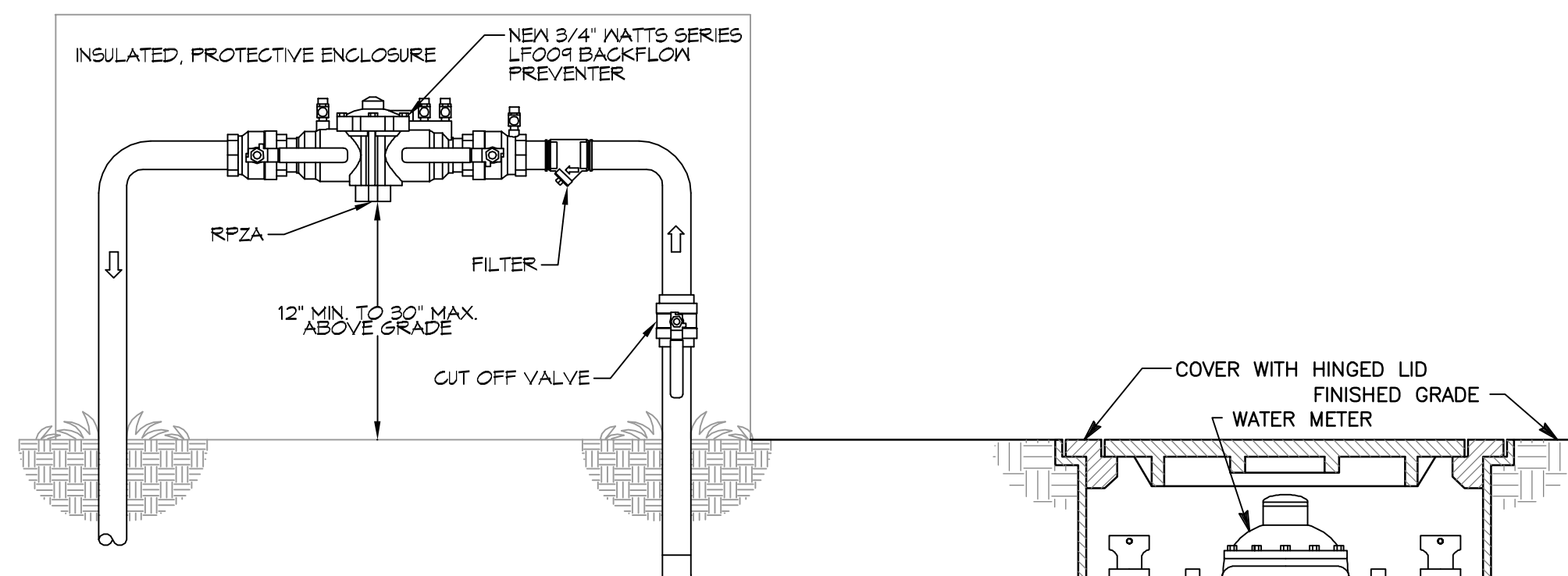
US	UTILITY SINK	WCO	WALL CLEAN OUT
LAV	LAVATORY		
WC	WATER CLOSET		
UR	URNAL		
AHU#	AIR HANDLING UNIT		
FD	FLOOR DRAIN		
SHW	SHOWER		

LEGEND

SYMBOL	DESCRIPTION
—S—S—	SANITARY SEWER
—V—V—	VENT PIPE
—FD	FLOOR DRAIN
— CO	LINE CLEAN OUT
— WCO	WALL CLEAN OUT

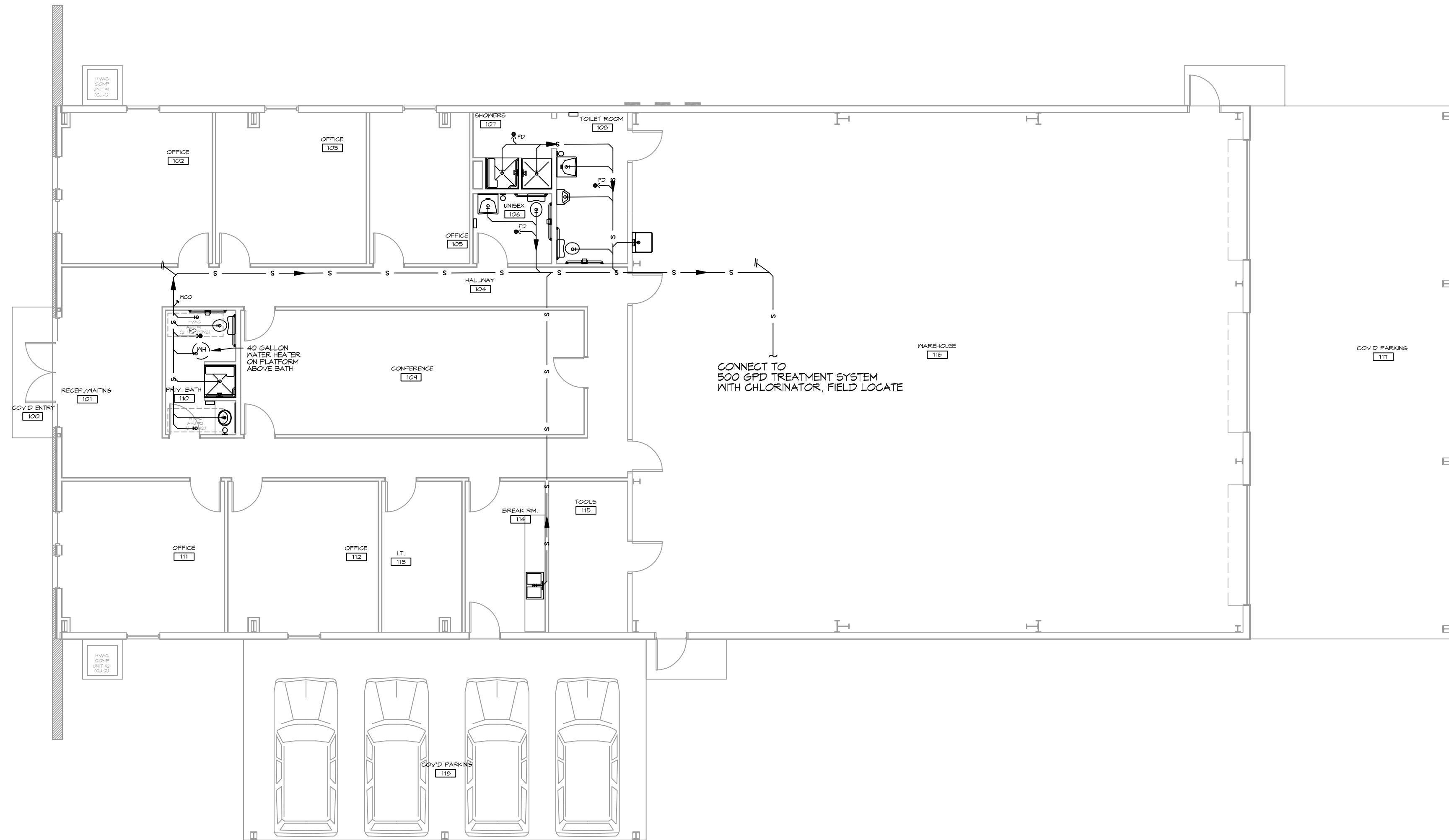
PLUMBING FIXTURE SCHEDULE

ITEM	DESCRIPTION	SOIL OR WASTE	VENT	COLD WATER	HOT WATER	
WC	WATER CLOSET	4"	3"	1"	—	FLUSH VALVE, MATCH EXISTING
LAV	LAVATORY	1-1/2"	2"	1/2"	1/2"	MATCH EXISTING
US	UTILITY SINK	3"	2"	1/2"	1/2"	FIAT MODEL #MSB 2424 OR EQUAL, 24"X24"X10" FIBERGLASS BASIN WITH MODEL #830-AA FAUCET WITH VACUUM BREAKER AND PAIL HOOK, AND MODEL #884-CC OR EQUAL MOP HANGER.
FD	FLOOR DRAIN	3"	2"	—	—	COATED CAST IRON WITH ADJUSTABLE NICKEL BRONZE GRATE, TRAP PRIMER CONNECTION AND DEEP SEAL TRAP. EQUAL TO JAY R. SMITH 2010-B-P.
FCO	FLOOR CLEAN OUT	—	—	—	—	MADE #N-8004-Y OR EQUAL, CAST IRON W/ADJUSTABLE HOUSING, ROUND HEAVY CAST IRON VANDAL PROOF TOP.
WCO	WALL CLEAN OUT	—	—	—	—	MADE #N-8453-R6 OR EQUAL, WITH BRASS PLUG AND ROUND STAINLESS STEEL SECURED ACCESS COVER.



TYPICAL RPZA RISER DETAIL
NOT TO SCALE

NOTE: ALL CONNECTIONS TO POTABLE WATER SYSTEMS SHALL BE PROTECTED WITH AN APPROVED BACK-FLOW PREVENTER



19 PLUMBING PLAN
SCALE: 3/8"=1'-0"

DAMMON ENGINEERING, INC.
 LOUISIANA & MISSISSIPPI
 Chief Engineer: Brian Mitchell, PE
 554 Old Spanish Trail
 Slidell, LA 70688
 www.dammonengineering.com
 info@dammonengineering.com
 PH: 985.449.9832

REVISIONS	DATE	DESCRIPTION

SEAL:

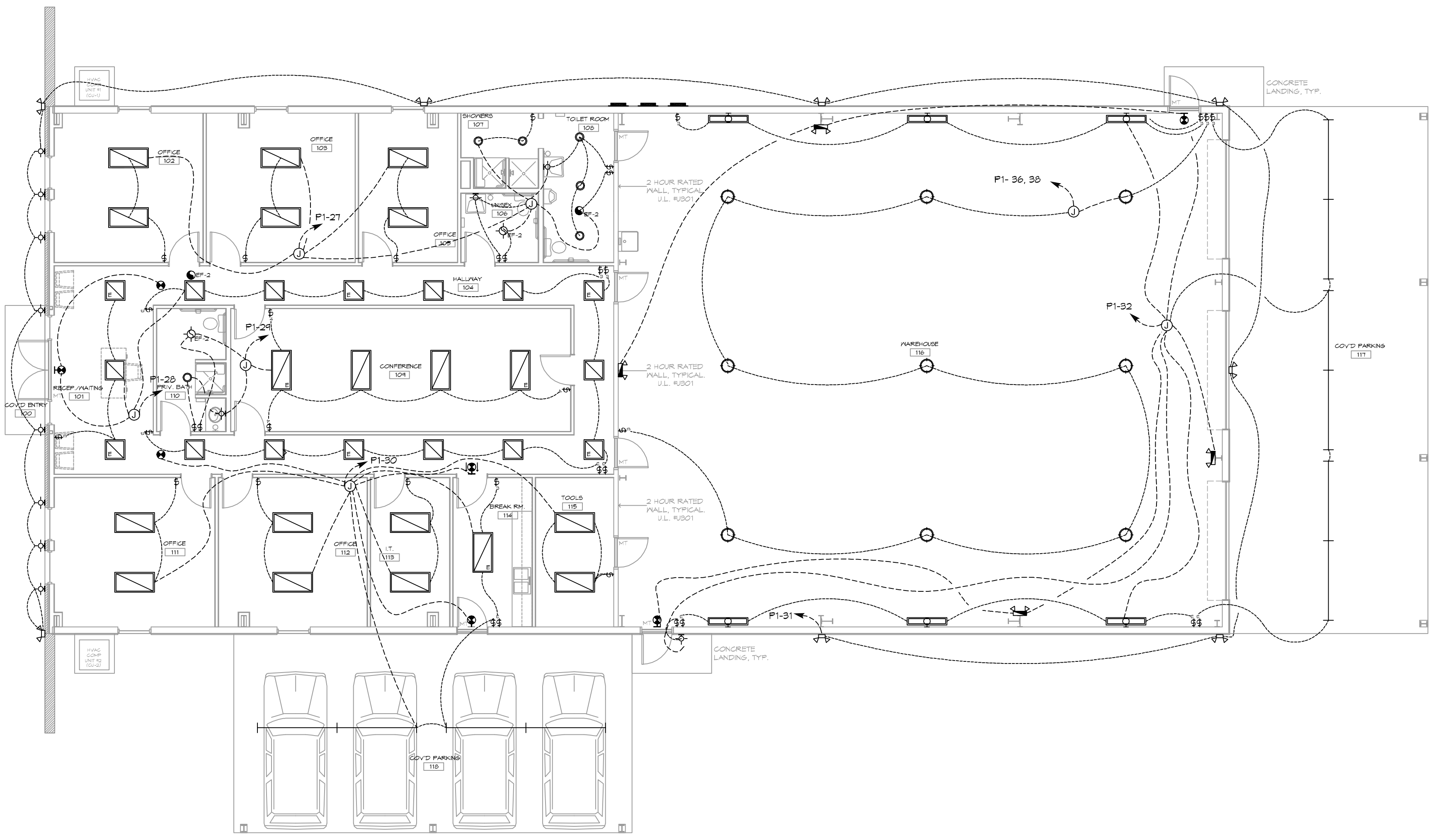
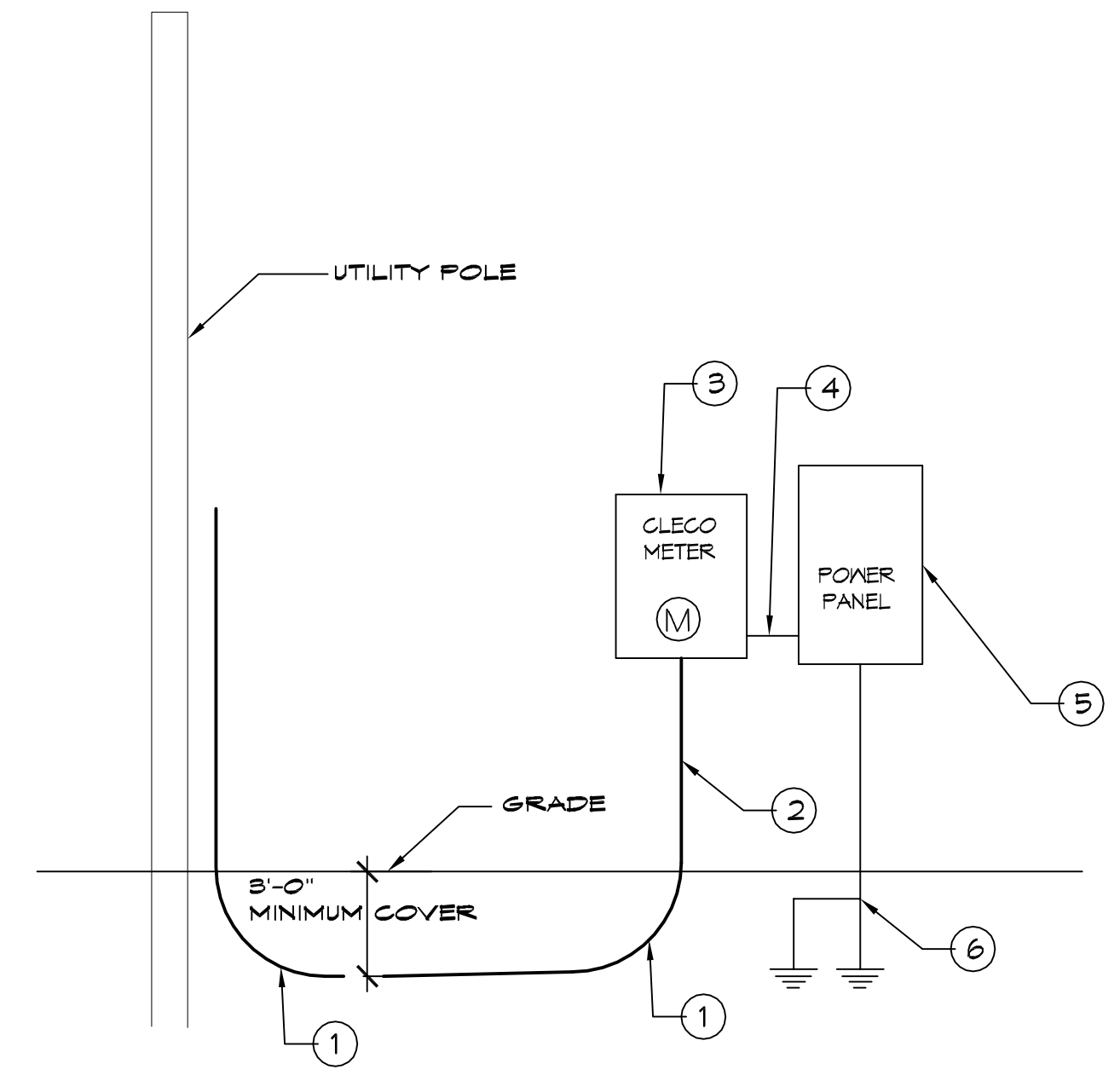
NEW OFFICE WAREHOUSE
ZEIGLER, TROTT & TIMBER, CO.
 L.A. HWY 1095 DEER CROSS DRIVE
 MADISONVILLE, LA 70447
 JOB NO: 2893 DATE: 10-08-2018
 DRAWN BY: GSD CHECKED BY: BMM

SHEET TITLE:
PLUMBING PLAN
 DRAWING NUMBER:
P101
 SHEET No: 6 of 9

GENERAL LIGHTING NOTES

1. ALL WORK SHALL COMPLY WITH APPLICABLE NATIONAL, STATE, AND LOCAL CODES, RULES, REGULATIONS, AND REQUIREMENTS OF THE SERVICE UTILITY COMPANY.
2. GENERAL CONTRACTOR SHALL NOTIFY THE ARCHITECT IMMEDIATELY IF ANY CONFLICTS OCCUR BETWEEN LIGHTING AND ANY OTHER TRADE. DO NOT PROCEED WITH INSTALLATION IN THAT AREA UNTIL CONFLICT HAS BEEN RESOLVED TO THE SATISFACTION OF THE ARCHITECT AND ENGINEER.
3. REFER TO ARCHITECTURAL DRAWINGS FOR EXACT LOCATION AND MOUNTING INSTRUCTIONS FOR ALL LIGHT FIXTURES. NOTIFY THE ARCHITECT AND ENGINEER OF ANY DISCREPANCIES BETWEEN THESE PLANS AND THE ARCHITECTURAL PLANS RELATING TO QUANTITY, TYPE AND LOCATION OF DEVICES AND/OR FIXTURES.
4. WHEN SPECIFIC LIGHT FIXTURE HAS BEEN SPECIFIED IN THE FIXTURE SCHEDULE, ELECTRICAL CONTRACTOR SHALL PROVIDE COMPLETE ASSEMBLY INCLUSIVE ALL PARTS AND HARDWARE TO INSURE PROPER FUNCTIONING FIXTURE.
5. ALL CONDUCTORS SHALL BE A MINIMUM OF #12 AWG UNLESS NOTED OTHERWISE.
6. ALL 120V RUNS LONGER THAN 60 FEET SHALL BE #10 AWG AND 277V RUNS LONGER THAN 150 FEET SHALL BE #10 AWG UNLESS NOTED OTHERWISE.
7. ALL CONDUCTORS SHALL BE COPPER.
8. WHERE CONDUCTOR SIZES ARE NOTED ON DRAWINGS, THAT WIRE SIZE SHALL BE THROUGH THE ENTIRE RUN UNLESS OTHERWISE NOTED.
9. MOUNTED LIGHT SWITCHES 48" AFF UNLESS NOTED OTHERWISE ON ARCHITECTURAL DRAWINGS.
10. WHERE MORE THAN ONE SWITCH OCCURS IN THE SAME LOCATION, THEY SHALL BE INSTALLED IN A GANG TYPE BOX UNDER ONE COVER PLATE. ALL GANGED SWITCHES SHALL HAVE A COMMON SEAMLESS FACEPLATE. EACH MULTI-GANGED BOX SHALL BE NO MORE THAN SIX (6) SWITCHES WIDE. WHERE MORE THAN SIX (6) SWITCHES ARE SHOWN AT ONE (1) LOCATION, ADDITIONAL MULTI-GANGED BOXES SHALL BE STACKED VERTICALLY AND THE WIDTH OF THE MULTI-GANGS SHALL BE AS EVEN AS POSSIBLE.
11. EACH DIMMER SWITCH SHALL HAVE A WATTAGE RATING 25% HIGHER THAN THE TOTAL WATTAGE OF ALL LIGHTS TO BE CONTROLLED BY THE DIMMER. DIMMER SIZES 600, 1000, 1500, AND 2000 WATTS, LUTRON NOVA T-STAR. WHERE SWITCHES ARE GANGED WITH DIMMERS, THE SWITCHES SHALL ALSO BE LUTRON NOVA T-STAR. FLUORESCENT AND LOW VOLTAGE DIMMERS SHALL BE LUTRON NOVA T-STAR.
12. WHERE FLUORESCENT FIXTURES ARE SHOWN TO BE DIMMED, THE FIXTURES SHALL HAVE DIMMING TYPE BALLASTS WHICH ARE COMPATIBLE WITH THE SPECIFIED DIMMERS.
13. WHERE LED FIXTURES/LAMPS ARE SHOWN TO BE DIMMED, THE DIMMER SHALL BE COMPATIBLE WITH THE FIXTURE/LAMP SPECIFIED OR PROVIDED.
14. ALL EMERGENCY EXIT LIGHT FIXTURES SHALL HAVE 90 MINUTE BATTERY BACKUP WITH INTEGRAL TEST BUTTON AND SHALL BURN CONTINUOUSLY.
15. ALL FLUORESCENT FIXTURES THAT UTILIZE DOUBLE-ENDED LAMPS AND CONTAIN BALLASTS SHALL BE PROVIDED WITH A DISCONNECTING MEANS IN ACCORDANCE WITH NEC 410.7(B).

PANEL SCHEDULE											
PANEL LOCATION:		PANEL P1 OUTSIDE FEEDER SOURCE: UTILITY COMPANY		VOLTAGE: 120/240V 528A 15.0kV		ENCLOSURE: FLESH MOUNTED NEVA 1 INLEED K/REGUP 62P 24K 228A M/B 28K/AS					
QTY	THHN WIRE SIZE	LOAD DESCRIPTION	BREAKER	LOAD (KVA)	AD	OV	LOAD (KVA)	BREAKER	LOAD DESCRIPTION	THHN WIRE SIZE	QTY
NO		LOCATION	AMP					AMP	LOCATION		NO
1	#10	25 TON CU-1	20	2	15	24	2	25	25 TON AA-1 3.5 KW	#10	2
3					15						4
5	#10	5 TON CU-2	60	2	35	41	2	35	5 TON AA-2 4.5 KW	#6	8
7					35						8
9	#10	HOT WATER HEATER	30	2	23	11	2	20	GRINDER PUMP/LIFT STATION	#10	10
11					23						12
13	#12	ROOM 111 OUTLETS	20	1	13	14	1	20	ROOMS 102 & 103 OUTLETS	#12	14
15	#12	ROOMS 114 & 115 OUTLETS	20	1	13	15	1	20	ROOM 115 & HALLWAY OUTLETS	#12	16
17	#12	ROOM 104 OUTLETS	20	1	13	14	1	20	ROOMS 101, 102 & HALLWAY 104 OUTLETS	#12	18
19	#12	ROOM 102 OUTLETS	20	1	14	14	1	20	ROOM 105 & 109 OUTLETS	#12	20
21	#12	ROOM 105 & HALLWAY 116 OUTLETS	20	1	14	14	1	20	WAREHOUSE 116 OUTLETS	#12	22
23	#12	WAREHOUSE 116 OUTLETS	20	1	14	11	1	20	WAREHOUSE 116 OUTLETS	#12	24
25	#12	WAREHOUSE 116 OUTLETS	20	1	17	15	1	20	OUTSIDE OUTLETS	#12	26
27	#12	Rm 102, 103, 105, 106, 109 LETS	20	1	0.4	0.4	1	20	ENTRANCE 101 & HALLWAY 104 LETS	#12	28
29	#12	Rm 101, 110, 110 LIGHTS	20	1	0.4	0.4	1	20	Rm 111, 112, 113, 114, 115 & 116 LETS	#12	30
31	#12	OUTSIDE LIGHTS	20	1	0.9	0.4	1	20	Rm 118 STRIP LETS, 111 LETS	#12	32
33	-	SPARE	20	1	-	-	1	20	SPARE	-	34
35	-	SPARE	20	1	-	-	2	20	WAREHOUSE 116 BAY LIGHTS	#10	36
37	-	SPARE	20	1	-	-	10				38
39	#10	WAREHOUSE 116 240V OUTLET	30	2	23	23	2	30	OUTSIDE 240V OUTLET	#10	40
41					23						42
				TOTAL CONNECTED LOAD = 65.1 kW							
				GROUND BUS							
				GROUND WIRE (N)							
				AD = 33.9 kW				OV = 31.2 kW			



16 LIGHTING PLAN
SCALE: 1/8"=1'-0"

LEGEND

- RECESSED 2 x 4 "LED" LIGHT FIXTURE, TO BE SELECTED. ('E' DENOTES FIXTURE ON EMERGENCY LIGHTING CIRCUIT)
- RECESSED 2 x 2 "LED" LIGHT FIXTURE, TO BE SELECTED. ('E' DENOTES FIXTURE ON EMERGENCY LIGHTING CIRCUIT)
- RECESSED "LED" "DOWN" LIGHT FIXTURE, TO BE SELECTED. ('E' DENOTES FIXTURE ON EMERGENCY LIGHTING CIRCUIT)
- RECESSED VENT/LIGHT FIXTURE, TO BE SELECTED.
- RECESSED EXHAUST FAN, TO BE SELECTED.
- CEILING MOUNTED "LED" "HIGH-BAY" LIGHT FIXTURE, TO BE SELECTED.
- ADJUSTABLE WALL WASHER LIGHT FIXTURE, TO BE SELECTED.
- 8' L CEILING MOUNTED "LED" STRIP LIGHT FIXTURE, TO BE SELECTED.
- WALL MOUNTED "LED" LIGHT FIXTURE, TO BE SELECTED.
- WALL MOUNTED "SECURITY" LIGHT FIXTURE, TO BE SELECTED.
- SINGLE POLE WALL SWITCH, MOUNTED AT 48" A.F.F., UNLESS NOTED OTHERWISE.
- THREE WAY WALL SWITCH, MOUNTED AT 48" A.F.F., UNLESS NOTED OTHERWISE.
- FOUR WAY WALL SWITCH, MOUNTED AT 48" A.F.F., UNLESS NOTED OTHERWISE.
- WALL OR CEILING MOUNTED "TEXT" LIGHT, WITH BATTERY BACKUP ON EMERGENCY CIRCUIT, TO BE SELECTED.
- WALL MOUNTED "EMERGENCY" LIGHT, WITH BATTERY BACKUP ON EMERGENCY CIRCUIT, TO BE SELECTED.
- ELECTRICAL DISCONNECT SWITCH, SIZED, CIRCUITED, AND MOUNTED PER CODE.
- ELECTRICAL PANEL, SIZED, CIRCUITED, AND MOUNTED PER CODE.
- ELECTRIC METER, MOUNTED PER CODE.
- JUNCTION BOX

DAMMON

ENGINEERING, INC.

LOUISIANA & MISSISSIPPI

www.dammonengineering.com
info@dammonengineering.com
554 Old Spanish Trail
St. Charles, LA 70588

Chief Engineer: Brian Mitchell, PE
1554 Old Spanish Trail
St. Charles, LA 70588

#	DESCRIPTION	DATE

SEAL:

BRIAN A. MISTICH
License No. 30187
PROFESSIONAL ENGINEER

NEW OFFICE WAREHOUSE
ZEIGLER & ZEIGLER, CO.
 L.A. HWY 1095 DEER CROSS DRIVE
 MADISONVILLE, LA 70447
 JOB No: 2393 DATE: 10-09-2019
 DRAWN BY: GCD CHECKED BY: BAM

SHEET TITLE:
LIGHTING PLAN

DRAWING NUMBER:
E102

SHEET No: 1 of 4