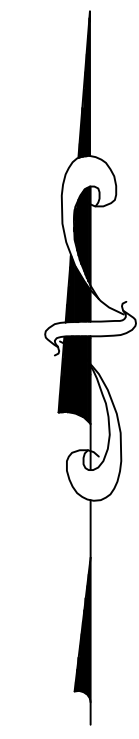
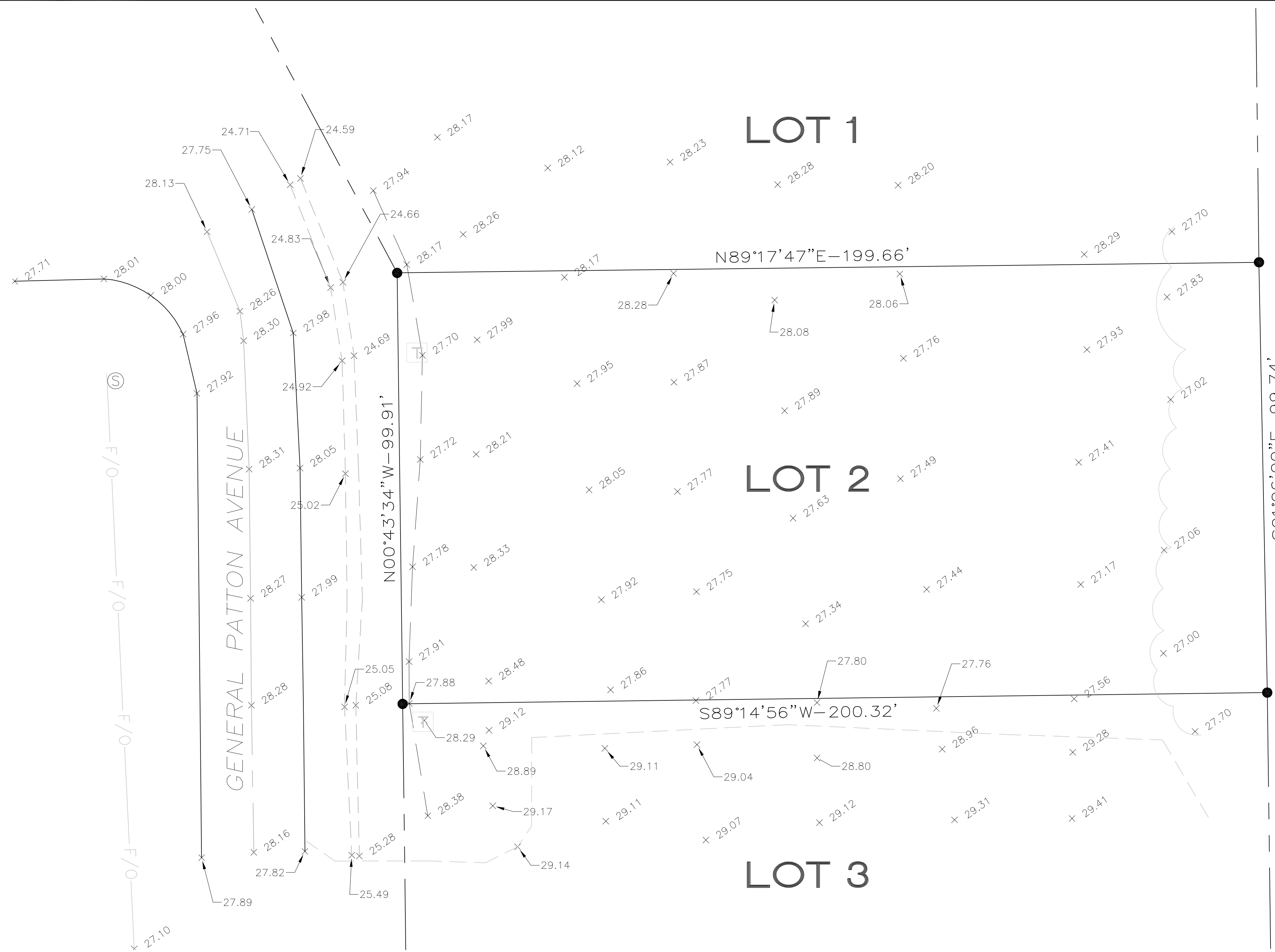
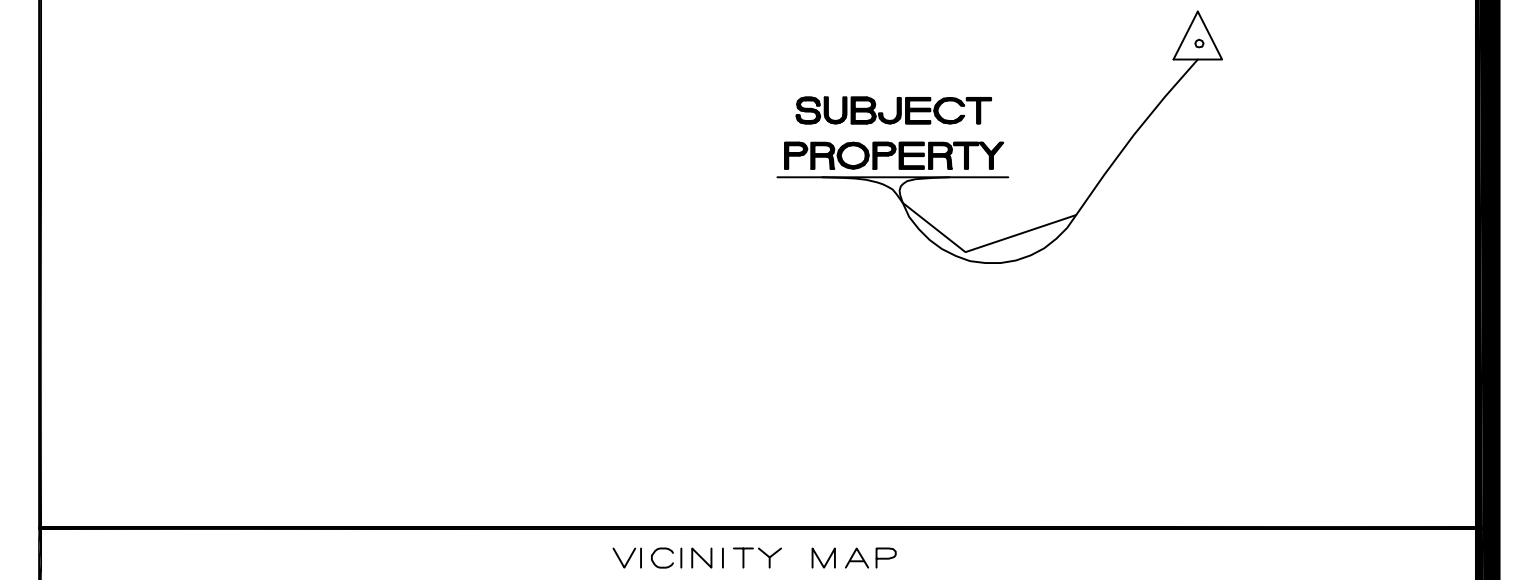


J:\OFFICE WAREHOUSE\2409 - MIKE SCHWARTZ MANDEVILLE\RESOURCE DWGS\217 GEN PATTON_2010.DWG - MIKE - 217 GENERAL PATTON - 4/21/2020



ering)\general eng\2020 Projects\Devier Projects\217 General Patton-Mandeville\patton



VICINITY MAP

REFERENCE MAP:

"MAP OF NORTHSORE COMMERCIAL PARK, LOT 2, LOCATED IN SECTION 18, T-7-S, R-12-E, ST. TAMMANY PARISH, LOUISIANA BY KELLY J. MCHUGH ASSOCIATES, INC." RECORDED WITH CLERK OF COURT, ST. TAMMANY PARISH, LOUISIANA AS MAP FILE NO. 4342.

BASIS OF BEARING:

BEARING DETERMINED USING LOUISIANA C&G NETWORK. BASE BEARING N89°17'47"E, SHOWN ON THE ORIGINAL MAP AS N89°55'01"E.

LEGEND:

● FOUND 1/2" IRON ROD

MAP SHOWING SURVEY OF
LOT 2
NORTHSORE COMMERCIAL PARK
LOCATED IN SECTIONS 18 AND 34
T.7.S.-R.12.E.
GREENSBURG LAND DISTRICT
ST. TAMMANY PARISH, LOUISIANA
FOR

DEVIER ENTERPRISES, LLC



General Engineering & Environmental Companies, Inc.
ENGINEERING AND SURVEYING
12241 INDUSTRIPLEX BLVD, SUITE C, BATON ROUGE, LA 70809
225-753-6545

CERTIFICATION:

I HEREBY CERTIFY THAT I MADE AN ACTUAL GROUND SURVEY OF THE PROPERTY SHOWN HEREON, AS PER RECORD DESCRIPTION, AND THAT THIS MAP IS MADE IN ACCORDANCE WITH THE FIELD NOTES OF SAID SURVEY, AND THAT THERE ARE NO ENCROACHMENTS EITHER WAY ACROSS PROPERTY LINES UNLESS OTHERWISE NOTED.

THIS SURVEY HAS BEEN DONE IN ACCORDANCE WITH LSBRPELS RS 49:951, et seq, LAC 46:LXI CHAPTER 29 BASED ON A CLASS "C" SURVEY.

TODD A. FARRAR, P.L.S.
REG. NO. 4947

DATE



FLOOD NOTE:

PROPERTY IS LOCATED IN FLOOD ZONE A3
BASE FLOOD ELEVATIONS 29.5' AS DELINEATED
ON FEMA FLOOD INSURANCE RATE MAP
225205 0245 C. DATED OCTOBER 17, 1989.

DRAWN BY: EBK	APPROVED BY: TAF	CHECKED: TAF
DATE: JANUARY, 2020	FILE NO.	217 GEN PATTON.DWG