

NEW OFFICE / WAREHOUSE
AMERICAN TRADESHOW SERVICES

LOTS 4 & 5, NORTHSORE COMMERCIAL PARK

GENERAL PATTON AVENUE

ST. TAMMANY PARISH, LOUISIANA

RATLIFF
 ARCHITECTS

814 MARINER'S PLAZA DRIVE
 MANDEVILLE, LOUISIANA
 (985) 626-5236

PROJECT INFORMATION:

OCCUPANY CLASSIFICATION:

IBC - BUSINESS, GROUP B
 NFPA 101 - BUSINESS, CH. 38

TYPE OF CONSTRUCTION:

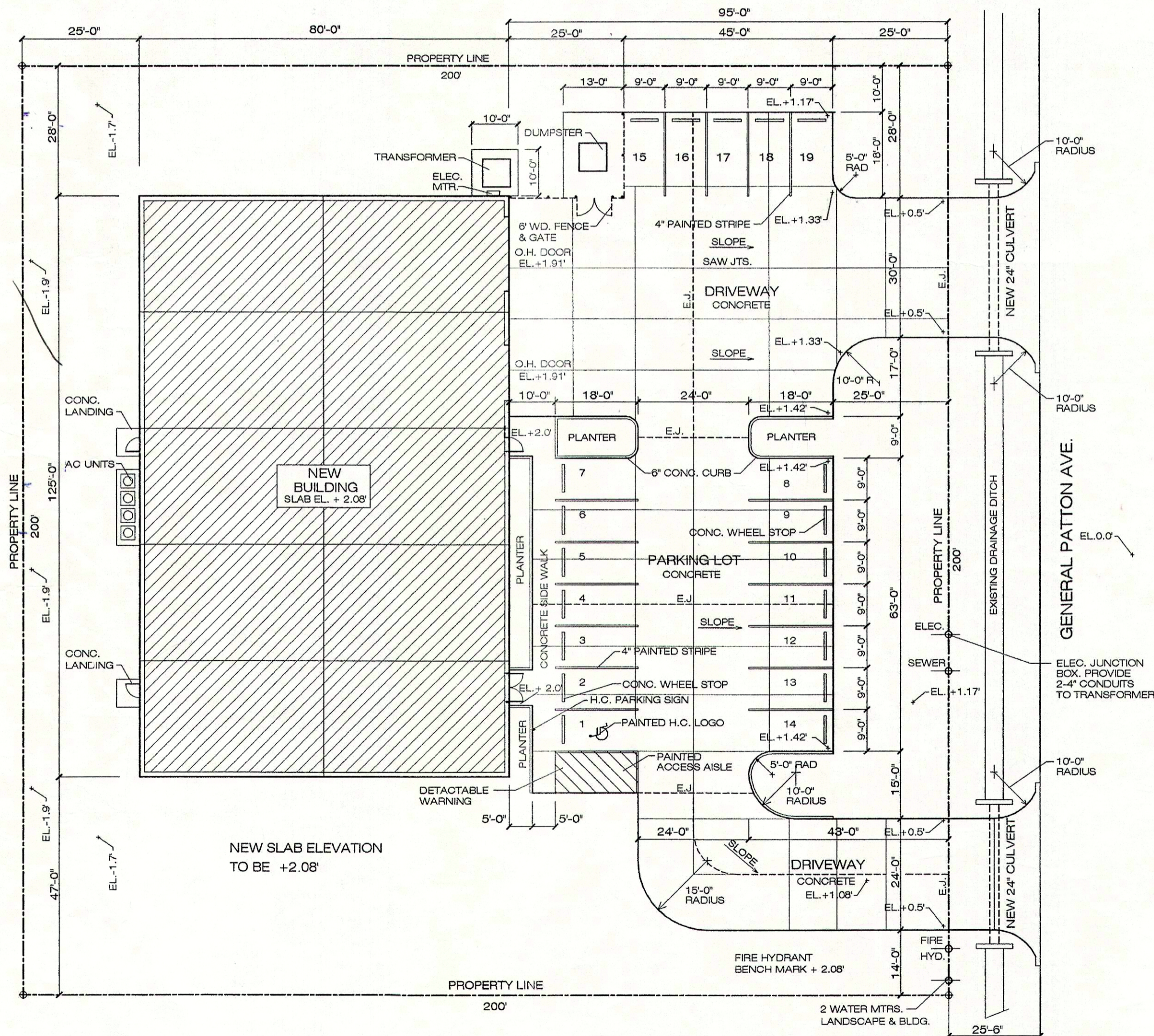
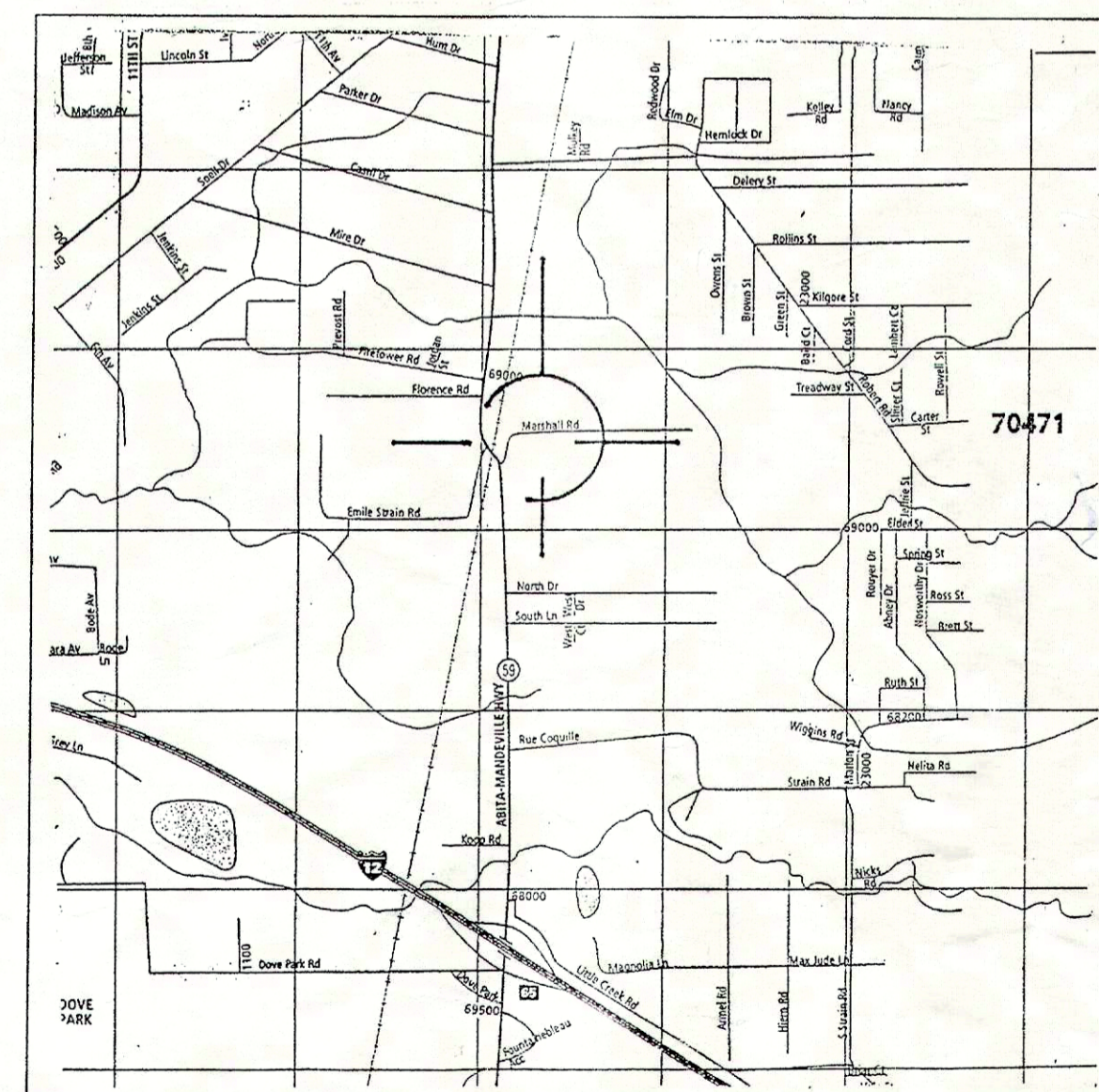
IBC - TYPE III

SQUARE FOOTAGE:

OFFICE AREA 5,200 S.F.
 WAREHOUSE AREA 4,800 S.F.
 TOTAL AREA 10,000 S.F.

INDEX OF DRAWINGS:

- A-1 TITLE SHEET / SITE PLAN
- A-2 DRAINAGE / LANDSCAPE PLAN
- A-3 FLOOR PLAN
- A-4 ELEVATIONS
- A-5 ELEVATIONS
- A-6 BUILDING SECTIONS
- A-7 WALL SECTIONS, RESTROOM DETAILS
- A-8 CEILING PLAN
- A-9 MECHANICAL PLAN
- A-10 ELECTRICAL PLAN



2 SITE PLAN
 A1 SCALE 1" = 20'-0"

1 VICINITY MAP
 A1 SCALE N. T. S.

NEW OFFICE / WAREHOUSE
 AMERICAN TRADESHOW SERVICES
 LOTS 4 & 5, NORTHSORE COMMERCIAL PARK
 ST. TAMMANY PARISH, LOUISIANA

JULY 30, 2007
 JOB # 07-07

SHEET:

A-1

1 OF 10