

**SITE PLAN**  
SCALE: 1"=20'-0"

**LEGEND**

- - PROPERTY LINE
- - - - - SETBACK LINE
- — — — NEW BUILDING
- — — — PARKING
- - 6' OPAQUE FENCE
- ♿ - HANDICAP PARKING
- ♿ - HANDICAP PARKING SIGN

**OFFICE WAREHOUSE PARKING REQUIREMENTS**

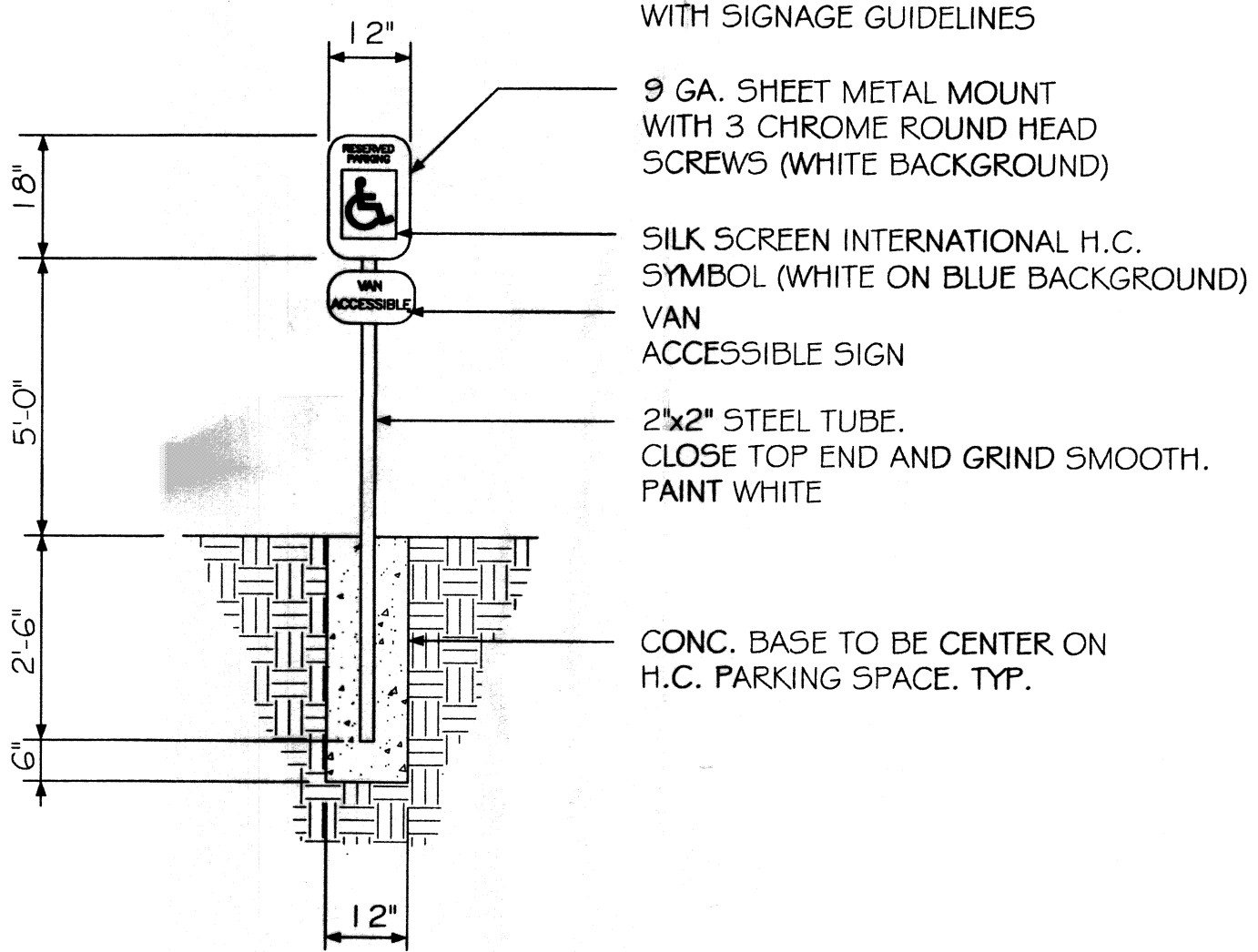
OFFICE - 1 PER TWO HUNDRED SQUARE FT. = 3  
 WAREHOUSE - 1 PER 5 EMPLOYEES = 1  
 TOTAL PARKING REQUIRED = 4 SPACES INCLUDING  
 1 HANDICAP ACCESSIBLE. TOTAL PROVIDED = 5

**NOTE:**  
 ALL CONCRETE PAVEMENT SHALL BE  
 5" THICK CONCRETE EXCEPT FROM  
 PROPERTY LINE TO STREET SHALL BE 6"  
 THICK CONCRETE.

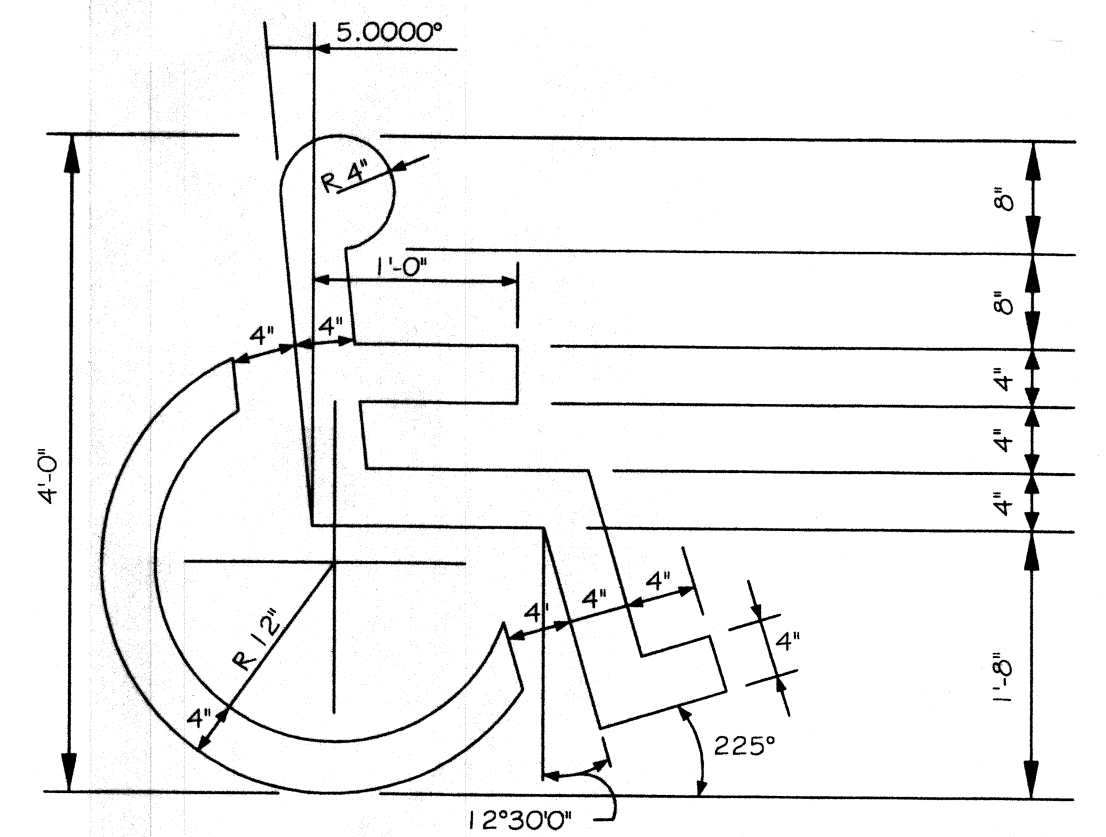
**SITE PLAN NOTES**

1. ROOFING MATERIAL: METAL ROOFING PANEL
2. SIDING MATERIAL: METAL PANELS # CMU
3. UTILITIES: ALL UTILITIES SHALL BE PLACED UNDERGROUND

**NOTE:**  
 SIGNAGE SHALL COMPLY  
 WITH SIGNAGE GUIDELINES



**HANDICAP PARKING SIGN**  
N. T. S.



**HANDICAP SYMBOL DETAIL**  
N. T. S.

**SITE LIGHTING**

EXTERIOR LIGHTING SHALL BE SHADED OR INWARDLY DIRECTED IN SUCH A MANNER SO THAT NO DIRECT LIGHTING OR GLARE BE CAST BEYOND THE PROPERTY LINE. THE INTENSITY OF SUCH LIGHTING SHALL NOT EXCEED ONE FOOT CANDLE AS MEASURED AT THE ABUTTING PROPERTY LINE. (NA FOR THIS PARTICULAR JOB)

**DAMMON ENGINEERING, INC.**  
Architects & Engineers

dammonengr.com  
 dammoneng@bellsouth.net  
 PHONE: 504-649-5832  
 FAX: 504-641-5950

CHIEF ENGINEER: EMMETT DAMMON, P.E.  
 CHIEF ARCHITECT: KEVIN KINCHEN  
 554 OLD SPANISH TRAIL  
 SUITE 100  
 BOULDER, LA 70455

**BULK SYSTEMS NEW OFFICE/WAREHOUSE BUILDING**

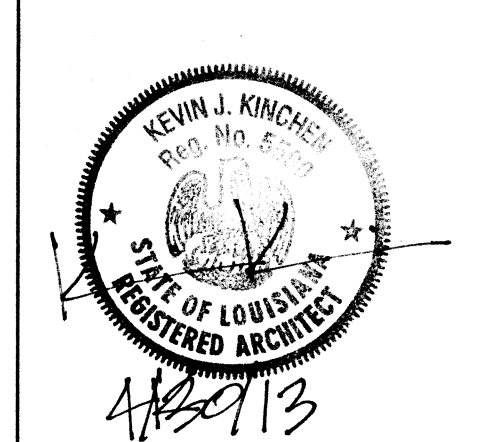
1226 FREMEAUX AVENUE  
 SUITE 100  
 SLIPPERY ROCK, LA 70459

JOB No: 2173 DATE: 04-22-2013  
 DRAWN BY: JTL CHECKED BY:

#	DESCRIPTION	DATE

432238  
 REVIEWED FOR  
 STATE FIRE MARSHAL  
 AS PER REVIEW LETTER  
 BY: WILLIAM D. JONES, ARCHITECT, CBO

*William D. Jones*



**SITE PLAN**