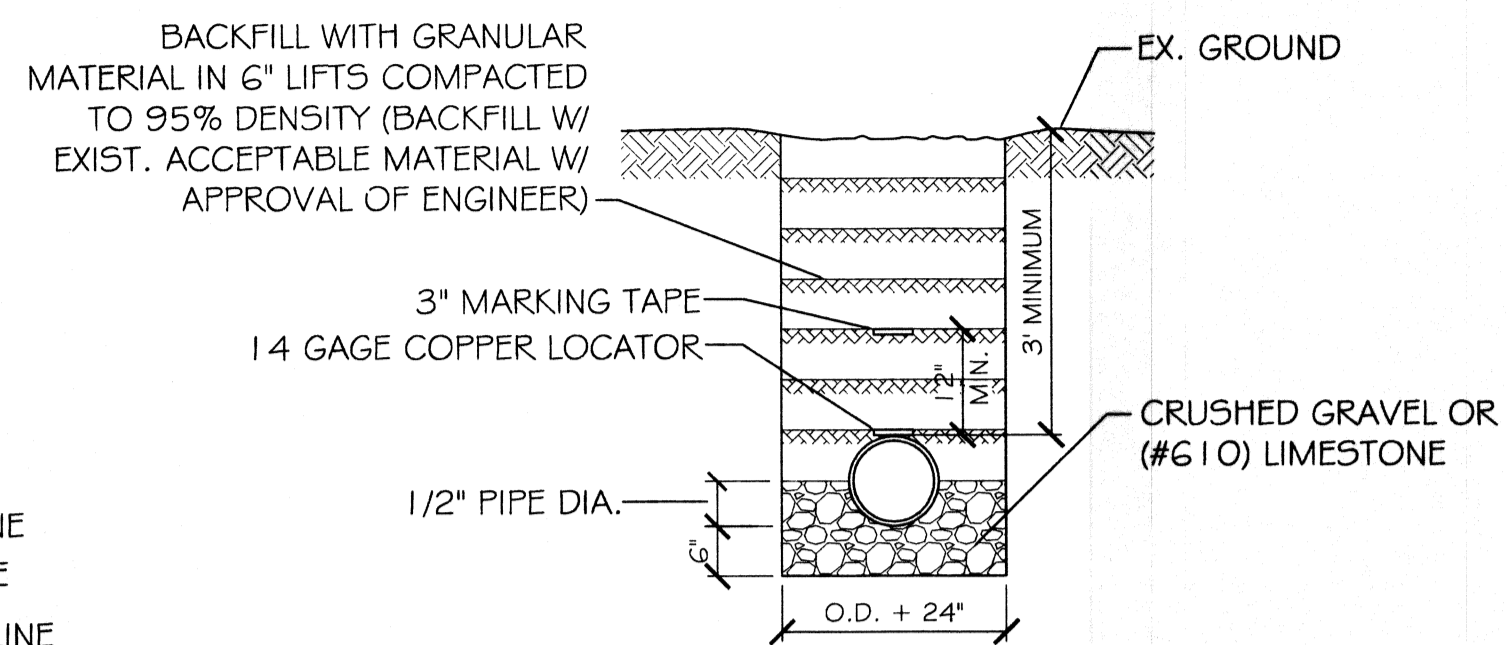
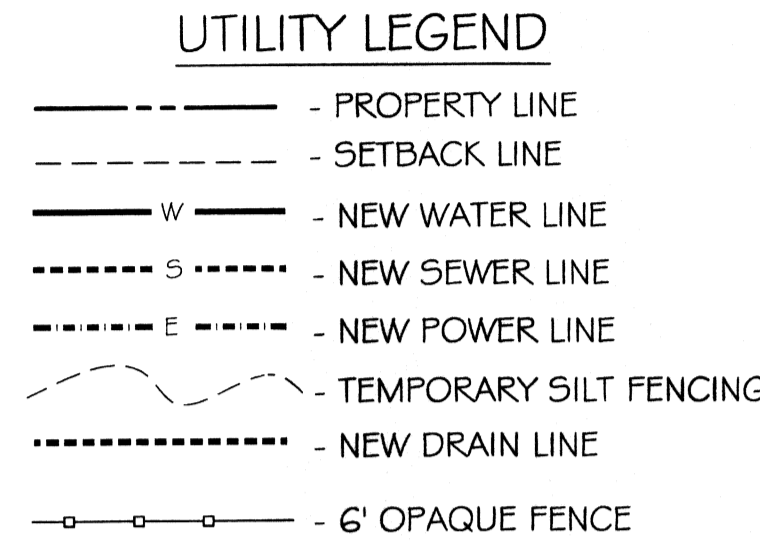
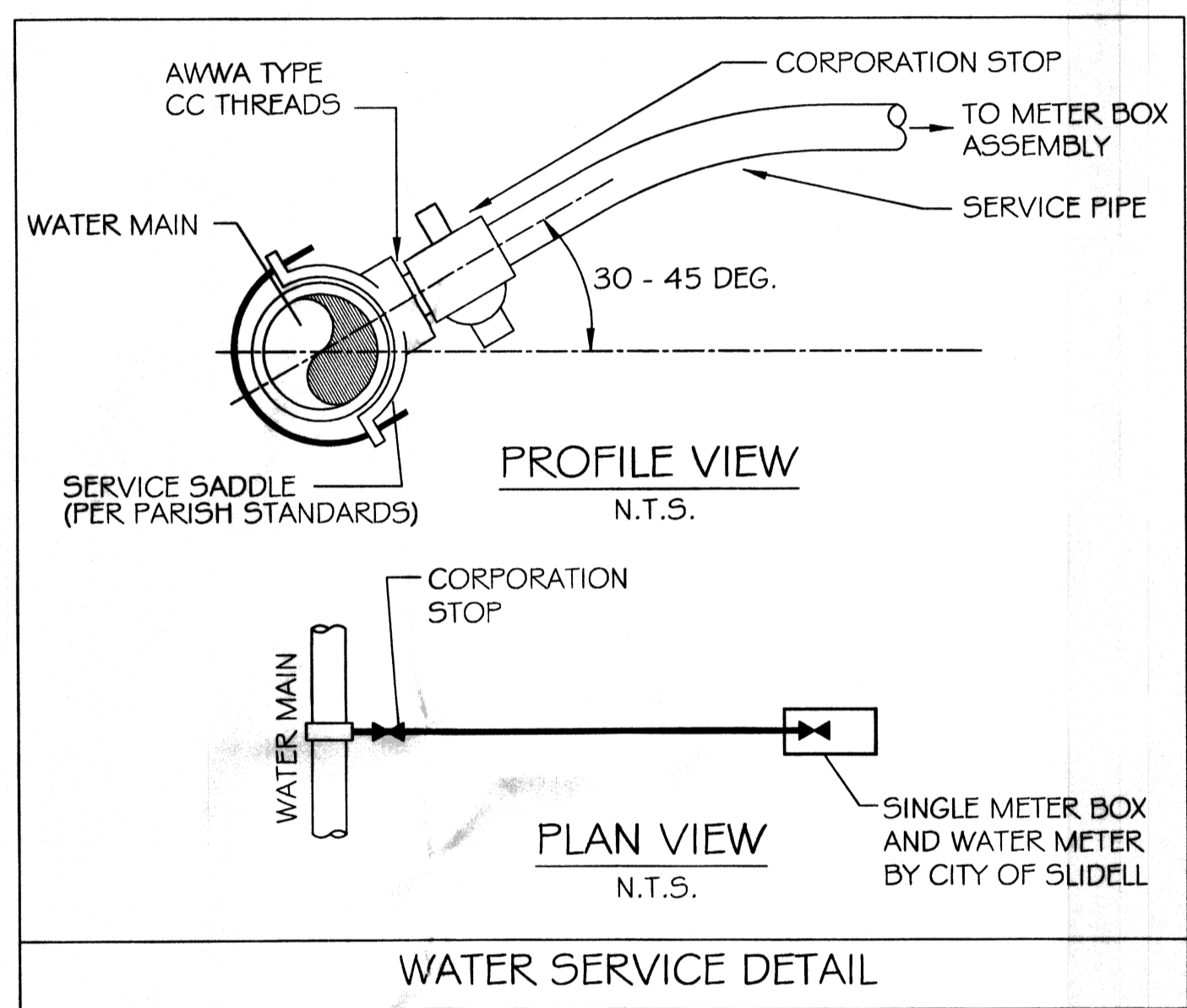


SITE UTILITY PLAN
SCALE: 1"=20'-0"

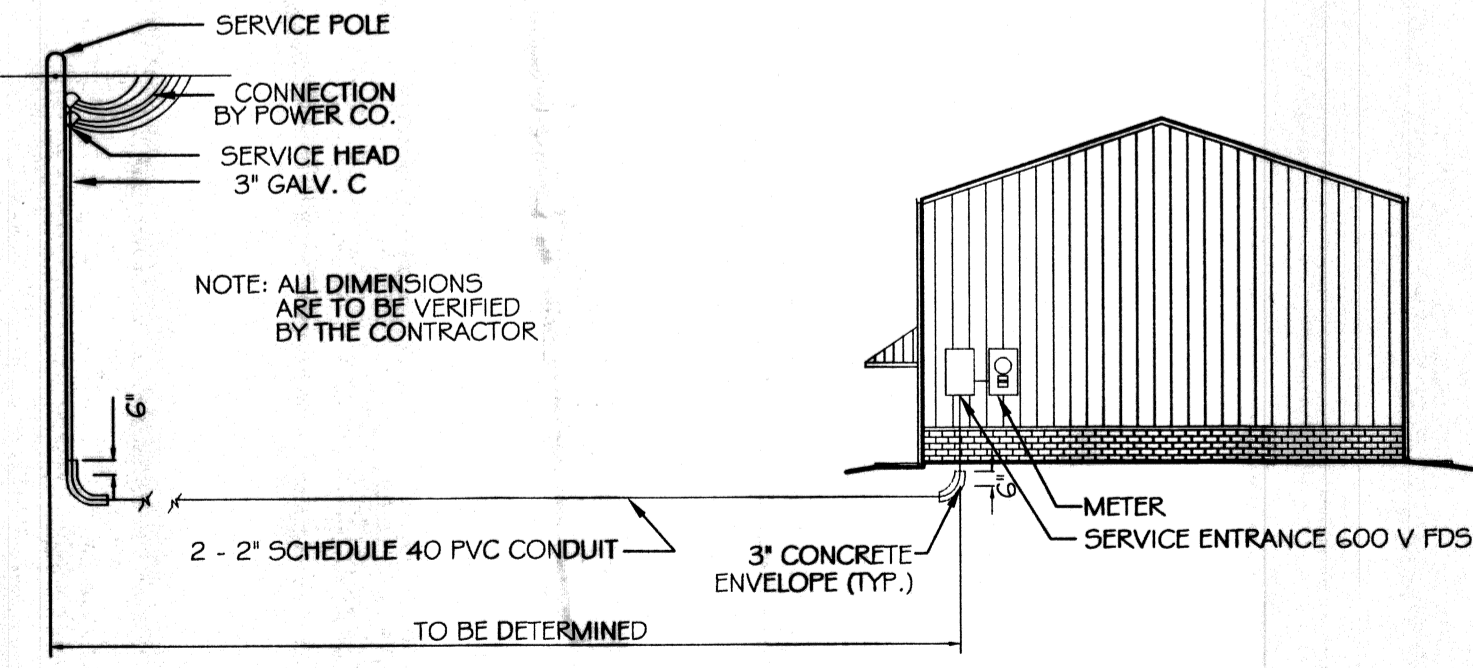


NOTE: A MINIMUM 10' HORZ. AND 18\"/>

PIPE BEDDING DETAIL FOR SEWER AND WATER
SCALE: N.T.S.



- UTILITY NOTES:**
- ELECTRICAL - 5CH. 80 PVC CONDUIT WHERE PIPE IS EXPOSED OUTSIDE OF BUILDING WALL. TRANSITION BACK TO 5CH. 40 PVC @ 90° PVC ELBOW BELOW GRADE. ALL 90° FITTINGS TO BE 36" LONG SWEEP TYPE.
 - COORDINATE WITH ELEC. COMPANY REGARDING ELECTRICAL SERVICE CONNECTION.
 - TIE NEW WATER SERVICE INTO EXISTING WATER MAIN, FIELD VERIFY LOCATION. SEE DETAIL THIS SHEET



ELECTRICAL SERVICE DETAIL
N.T.S.

432238
REVIEWED FOR
STATE FIRE MARSHAL
AS PER REVIEW LETTER
BY: WILLIAM D. JONES, ARCHITECT, CBO
William D. Jones

DAMMON ENGINEERING INC.
Architects & Engineers

dammonengineering.com
dammonera@bellsouth.net
PHONE: 985-649-5832
FAX: 985-641-5950

CHIEF ENGINEER: EMMETT DAMMON, P.E.
CHIEF ARCHITECT: KEVIN KINCHEN
554 OLD SPANISH TRAIL
SLIDELL, LA 70456

BULK SYSTEMS' NEW OFFICE/WAREHOUSE BUILDING

1,220 FREMEAUX AVENUE
SLIDELL, LOUISIANA 70456

JOB No: 2173 DATE: 04-22-2013
DRAWN BY: JTL CHECKED BY:

#	DESCRIPTION	DATE

KEVIN J. KINCHEN
Reg. No. 456
STATE OF LOUISIANA
REGISTERED ARCHITECT

4/30/13

SITE UTILITY PLAN

SHEET No: 4 OF 20

C3