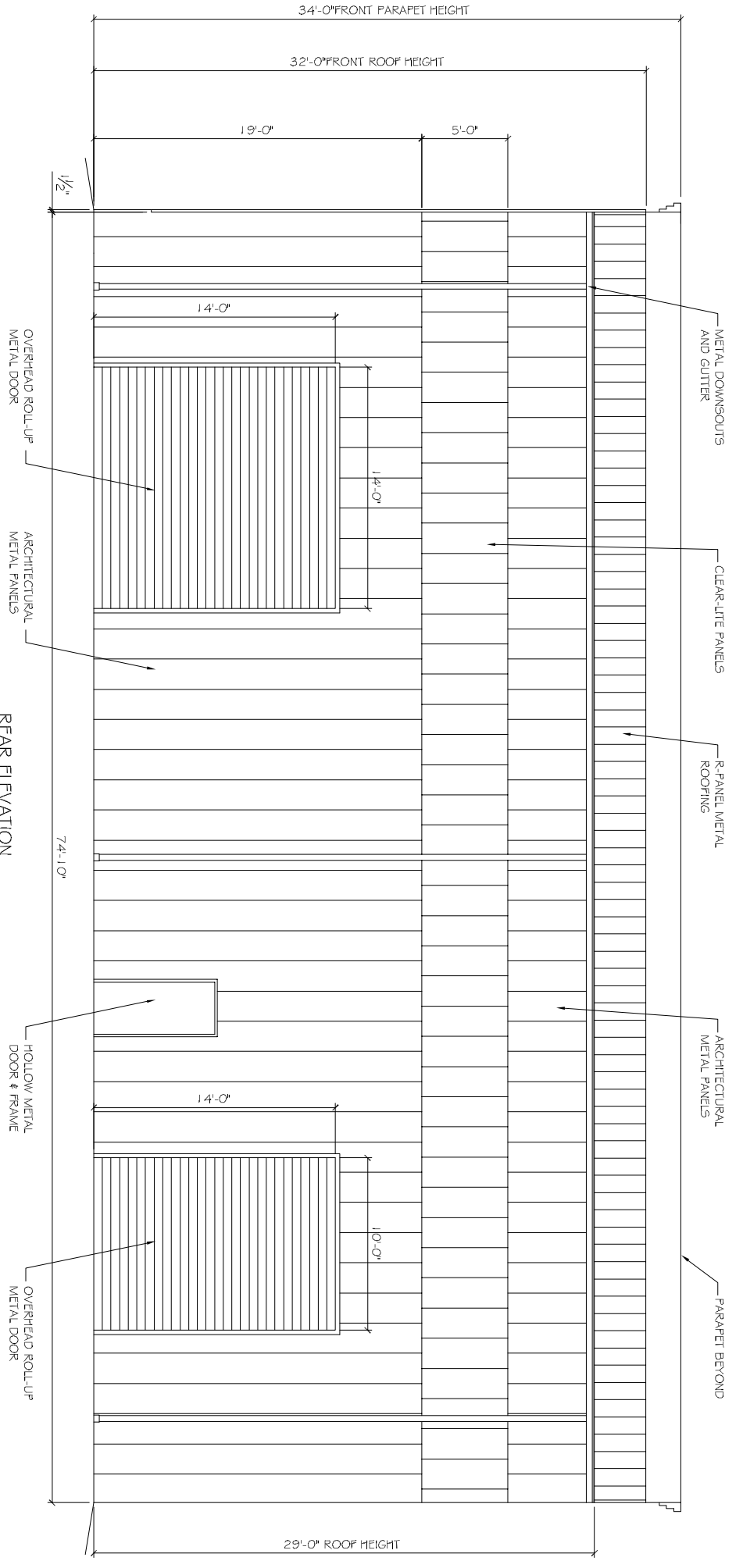


LEFT SIDE ELEVATION

SCALE: 1/4" = 1'-0"



REAR ELEVATION

SCALE: 1/4" = 1'-0"

EXTERIOR ELEVATIONS

SHEET No: OF

A4

REVISIONS		
#	DESCRIPTION	DATE

BULK SYSTEM'S NEW OFFICE/WAREHOUSE BUILDING
 1223 FREMEAUX AVENUE
 SLIDELL, LOUISIANA 70458

JOB No: DATE: 01-22-2013
 DRAWN BY: JTL CHECKED BY:

I warrant that the design and construction documents prepared by me or under my direct supervision and control are the property of Dammon Engineering, Inc. and shall remain confidential. I warrant that I will not disclose the design and construction documents prepared by me or under my direct supervision and control to any third party without the written consent of Dammon Engineering, Inc. I warrant that I will not use any design or construction documents prepared by me or under my direct supervision and control for any other project without the written consent of Dammon Engineering, Inc.

DAMMON ENGINEERING INC.
Architects & Engineers

CHIEF ENGINEER: EMMETT DAMMON, P.E.
 CHIEF ARCHITECT: KEVIN KINCHEN
 554 OLD SPANISH TRAIL
 SLIDELL, LA 70458

dammonengme.com
 dammoneng@slidell.ah.net
 PHONE: 905-649-5832
 FAX: 905-641-5950