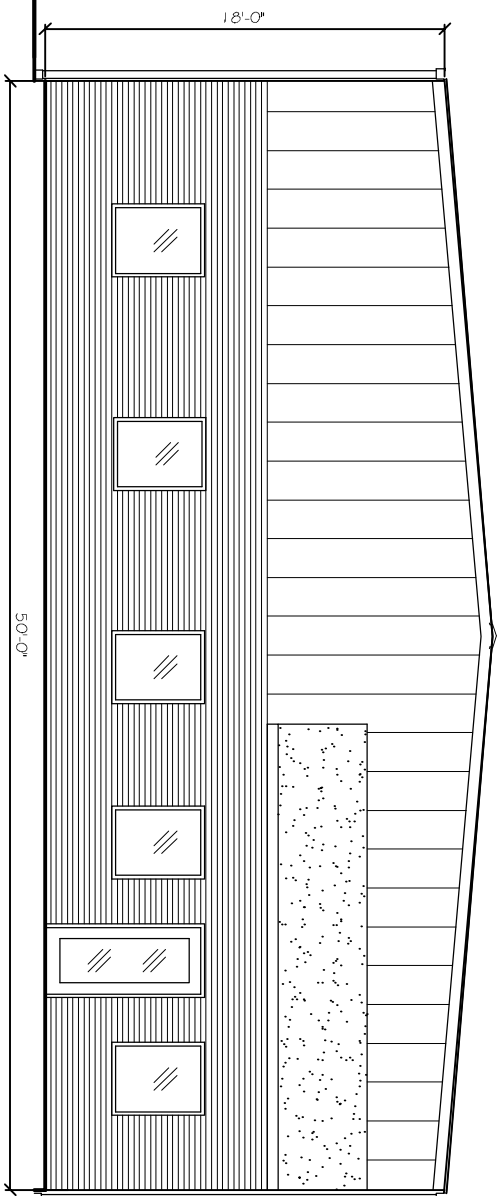
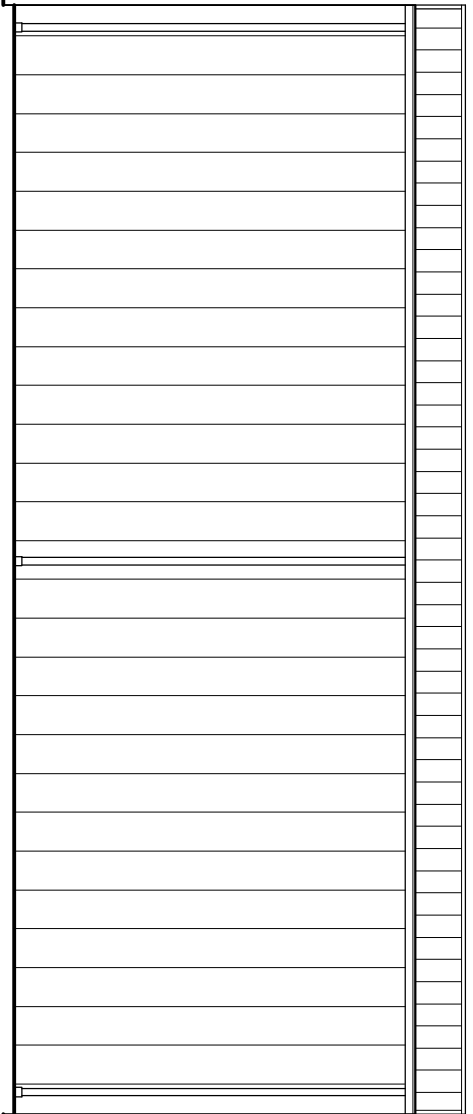


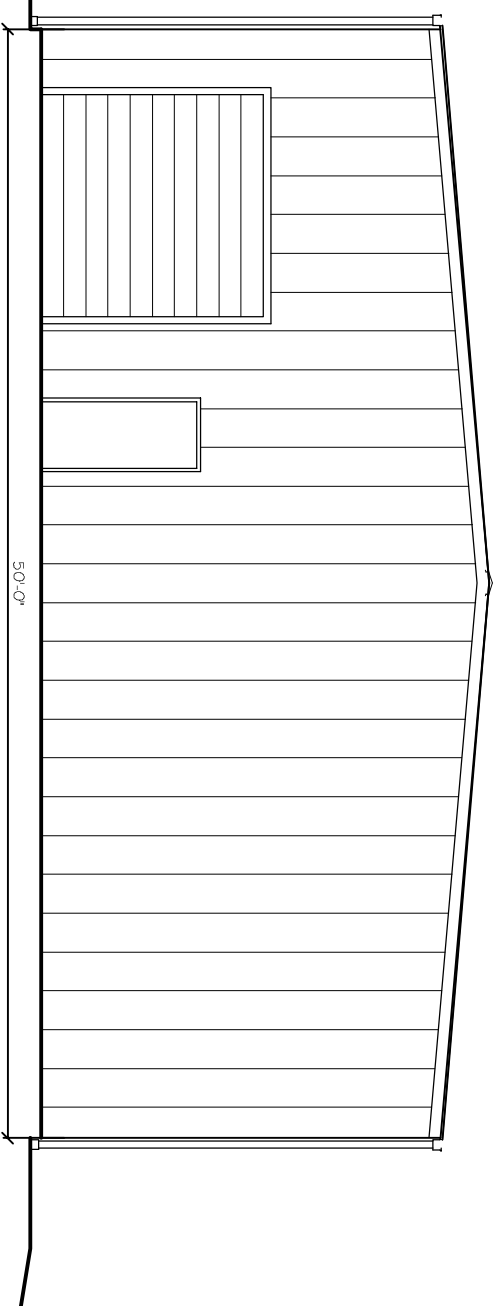
SIDE ELEVATION
SCALE: 1/4" = 1'



FRONT ELEVATION
SCALE: 1/4" = 1'



SIDE ELEVATION
SCALE: 1/4" = 1'



REAR ELEVATION
SCALE: 1/4" = 1'

REVISIONS	
#	DESCRIPTION

INDUSTRIAL & MARINE STARTER
LAMB STREET
NEW ORLEANS, LOUISIANA

JOB No: DATE: 07-29-2013
DRAWN BY: CKD CHECKED BY: CKD

This plan, drawing and specification, as well as any other documents prepared by or for the firm, are the property of Dammon Engineering, Inc. and shall remain the confidential property of the firm. No part of this drawing or specification may be reproduced, stored in a retrieval system, or transmitted in any form or by any means, electronic, mechanical, photocopying, recording, or by any information storage and retrieval system, without the prior written consent of Dammon Engineering, Inc. All other drawings or specifications may be subject to revision without notice or without obligation of the firm.



DAMMON
ENGINEERING, INC.
Architects & Engineers

CHIEF ENGINEER: ENNETT DAMMON, P.E.
CHIEF ARCHITECT: KEVIN KINCHEN
554 OLD SPANISH TRAIL
SUDELL, LA 70458
dammoneng@att.net
dammoneng@bellsouth.net
PHONE: 905-649-5832
FAX: 905-641-5950

BUILDING ELEVATIONS

SHEET No: 0 OF 0

A2