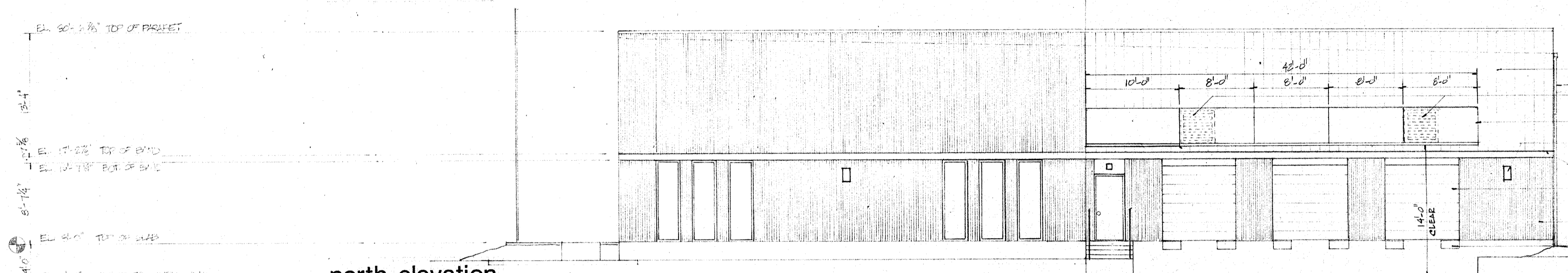


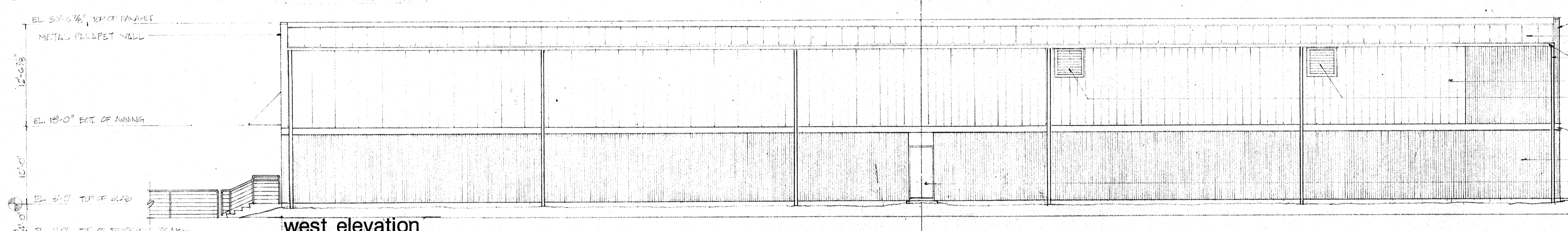
east elevation

- CAP FLASHING - CONT. @ ALL PARAPET WALLS
- PPG LOGO (PPG BLUE)
- 8" RIPPED CONCRETE MASONRY UNIT
- 30" FLAG POLE (INSTALL AS PER MFR. SPECS)
- METAL AWNING - CUSTOM-BUILT
- 8" GRAPHIC BAND (1 BLOCK COURSE) (PPG BLUE)
- 1/4" FIXED GLASS
- WALL MTD. LIGHT FIXTURE
- STEEL PIPE HANDRAIL (PPG BLUE)



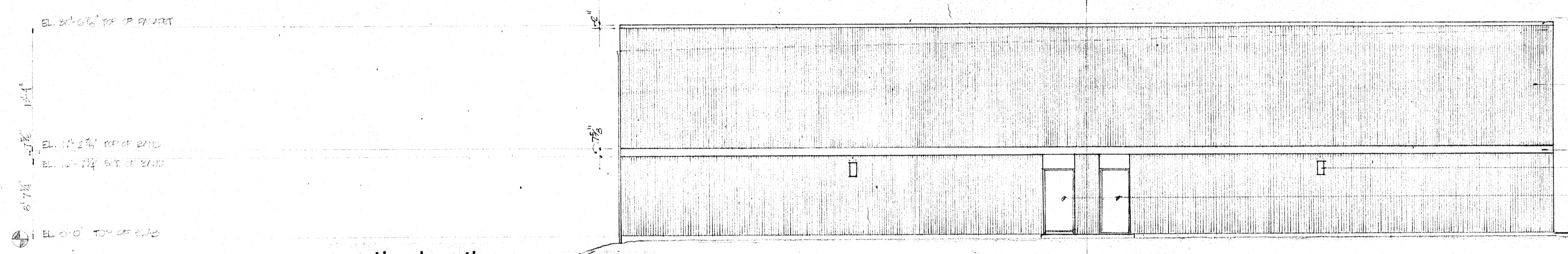
north elevation

- METAL SIDING
- 6" MTL. DOWNLIGHT
- 30" MTL. LINER w/ BIRD SCREEN
- MTD. BEHIND CANOPY
- METAL AWNING (CUSTOM-BUILT)
- WALL MTD. LIGHT FIXTURE
- 8" GRAPHIC BAND (1 BLOCK COURSE) (PPG BLUE)
- 8'x8' OVERHEAD DOOR
- 8" RIPPED CON. MASONRY UNIT
- ROCK BUSHERS



west elevation

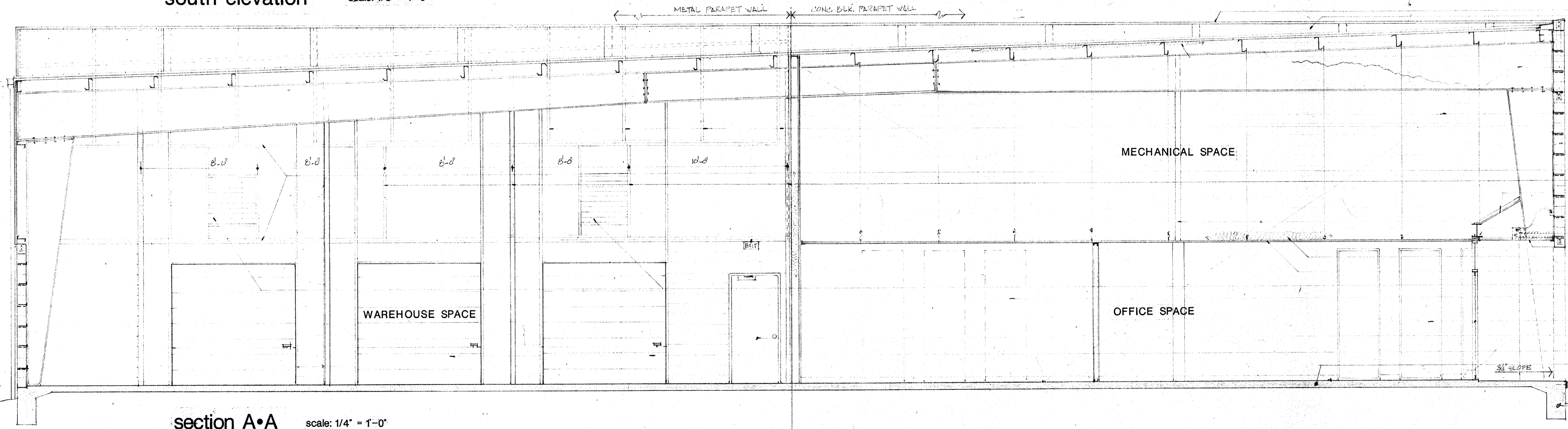
- CONC. BLOCK PARAPET WALL
- STANDING SEAM METAL ROOF
- 20 GA. GALV. SHEET & DOWN GUTTER (5" D)
- COLOR: SAME AS METAL SIDING
- METAL SIDING
- 30" MTL. LINER w/ BIRD SCREEN
- PAINT TO MATCH MTL. SIDING
- 8" GRAPHIC BAND (1 BLOCK COURSE) (PPG BLUE)
- 8" RIPPED C.M.U. COLOR: MATCH METAL SIDING
- H.M. DOOR (NO HWD ON EXT. SIDE)



south elevation

scale: 1/8" = 1'-0"

- CAP FLASHING
- 8" RIPPED C.M.U.
- 30" FLAG POLE (INSTALL AS PER MFR. SPECS)
- 8" GRAPHIC BAND (1 BLOCK COURSE) (PPG BLUE)
- WALL MTD. LIGHT FIXTURE
- H.M. DOORS w/ PLAIN MASONRY PANEL ABOVE
- COLOR: SAME AS GALV. WALL
- (NO HWD ON EXT. SIDE)



section A-A

scale: 1/4" = 1'-0"

- CAP FLASHING
- MTL. COUNTERSINKING (ENTIRE WALL)
- 1/2" PRIME G.F.L.O.C.
- 2" INSULATION
- RIGID FOAM
- WIND BRACING
- 6" MTL. STUDS @ 8'-0" O.C. (PARAPET WALL)
- 8" RIPPED C.M.U. w/ #8 DOWEL EVERY 2nd COURSE & METAL TIES EVERY 2nd COURSE
- 8" G.I.T.
- 2" LIGHT ROLLED CHANNEL BETWEEN PARTS TO ANCHOR MTL. AWNING
- PPG & 2" WIND BRACING WELD TO RIGID BEAMS & BEAM
- INTERIOR BRICK END CEILING
- 6" DOWNLIGHT
- METAL SOFFIT
- 6" INSULATION (R-14)
- SUBSTRATE ACROUSTICAL CEILING
- 30" MTL. LINER w/ BIRD SCREEN
- FIXED GLASS w/ WINDOWS BLOCKED
- 1/4" FIXED GLASS
- HOLLOW METAL DOOR (2'-0" x 7'-0") w/ GLIDER
- METAL OVERHEAD DOOR (8'-0" x 8'-0")
- 7" CONC. SLAB
- CONC. G.B. (SEE FOUNDATION PLAN)

project no.	87094
date	10 Dec. 87
scale	NOTED
drawn by	VFA
checked by	SFC
revisions	

CASERTA / CARROLL ARCHITECTS
 A Professional Corporation
 110 James Drive West / Suite 200 / St. Rose, LA 70087 / 504-466-0988

PPG INDUSTRIES • TRAINING & DISTRIBUTION CENTER
 James Business Park • St. Rose, Louisiana
BRACKLEY & VOELKEL • GENERAL CONTRACTORS

A-6	6	14
-----	---	----

BRUNING 40-22-83571