

PANEL: MDP LOCATION: REPAIR BAY FED FROM: SERVICE PROVIDER										VOLTAGE: 277V/480V, 400A 3Ø, 4W ENCLOSURE: NEMA 1, SURFACE MOUNTED, W/EQUIPMENT GRND BAR, 400A, 400A MAIN DISCONNECT, 14,000 AIC									
CKT. NO.	THHN WIRE SIZE	LOAD DESCRIPTION	BREAKER		LOAD (KVA)	AØ	BØ	CØ	LOAD (KVA)	BREAKER		LOAD DESCRIPTION	THHN WIRE SIZE	CKT. NO.					
			AMP	POLE						AMP	POLE								
1	-	SPARE	20	1	-				-	1	20	SPARE	-	2					
3	-	SPARE	20	1	-				-	1	20	SPARE	-	4					
5	-	SPARE	20	1	-				-	1	20	SPARE	-	6					
7	-	SPARE	20	1	-				-	1	20	SPARE	-	8					
9	-	SPACE	-	-	-				-	1	20	SPARE	-	10					
11	-	SPACE	-	-	-				-	1	20	SPARE	-	12					
13	-	SPACE	-	-	-			25.0	-	-	-	-	-	14					
15	-	SPACE	-	-	-			25.0	3	200	PANEL A	-	16						
17	-	SPACE	-	-	-			25.0	-	-	-	-	-	18					
19	-	SPACE	-	-	-			-	-	-	-	-	-	20					
21	-	SPACE	-	-	-			-	-	-	-	-	-	22					
23	-	SPACE	-	-	-			-	-	-	-	-	-	24					
25	-	SPACE	-	-	-			-	-	-	-	-	-	26					
27	-	SPACE	-	-	-			-	-	-	-	-	-	28					
29	-	SPACE	-	-	-			-	-	-	-	-	-	30					

PANEL: "A" LOCATION: REPAIR BAY FED FROM: MDP										VOLTAGE: 277V/480V, 200A 3Ø, 4W ENCLOSURE: NEMA 1, SURFACE MOUNTED, W/EQUIPMENT GRND BAR, 225A, MLO, 14,000 AIC									
CKT. NO.	THHN WIRE SIZE	LOAD DESCRIPTION	BREAKER		LOAD (KVA)	AØ	BØ	CØ	LOAD (KVA)	BREAKER		LOAD DESCRIPTION	THHN WIRE SIZE	CKT. NO.					
			AMP	POLE						AMP	POLE								
1	12	HIGH BAY LIGHTS	20	1	4.5				-	1	20	SPARE	-	2					
3	12	HIGH BAY LIGHTS	20	1	6.5				-	1	20	SPARE	-	4					
5	-	SPACE	-	-	-				-	1	20	SPARE	-	6					
7	-	SPACE	-	-	-				-	1	20	SPARE	-	8					
9	-	SPACE	-	-	-				-	1	20	SPARE	-	10					
11	-	SPACE	-	-	-				-	1	20	SPARE	-	12					
13	-	SPACE	-	-	-			25.0	-	-	-	-	-	14					
15	-	SPACE	-	-	-			25.0	3	110	75 KVA TRANSFORMER & SUB PANEL	-	16						
17	-	SPACE	-	-	-			25.0	-	-	-	-	-	18					
19	-	SPACE	-	-	-			25.0	-	-	-	-	-	20					
21	-	SPACE	-	-	-			-	-	-	-	-	-	22					
23	-	SPACE	-	-	-			-	-	-	-	-	-	24					
25	-	SPACE	-	-	-			-	-	-	-	-	-	26					
27	-	SPACE	-	-	-			-	-	-	-	-	-	28					
29	-	SPACE	-	-	-			-	-	-	-	-	-	30					

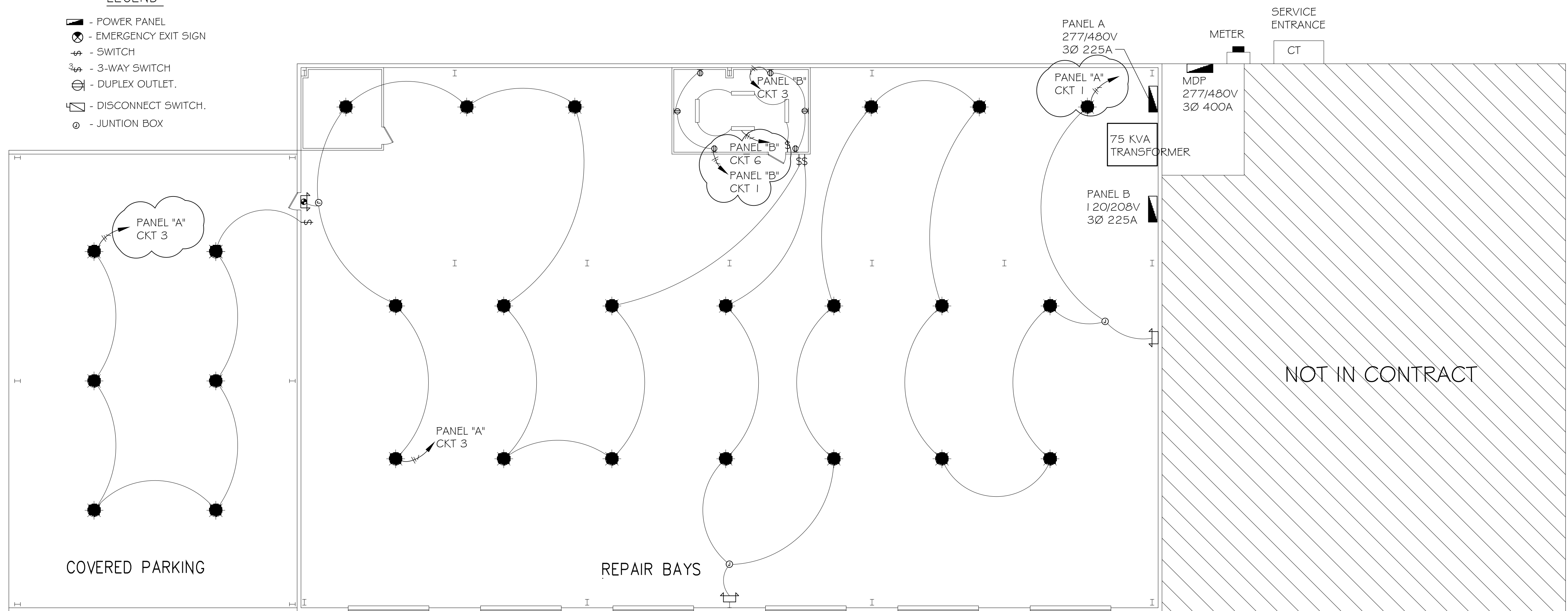
PANEL: "B" LOCATION: REPAIR BAY FED FROM: 75KVA TRANSFORMER										VOLTAGE: 120/208V, 200A 3Ø, 4W ENCLOSURE: NEMA 1, SURFACE MOUNTED, W/EQUIPMENT GRND BAR, 225A, MLO, 14,000 AIC									
CKT. NO.	THHN WIRE SIZE	LOAD DESCRIPTION	BREAKER		LOAD (KVA)	AØ	BØ	CØ	LOAD (KVA)	BREAKER		LOAD DESCRIPTION	THHN WIRE SIZE	CKT. NO.					
			AMP	POLE						AMP	POLE								
1	12	OUTLETS - OFFICE	20	1	0.5				-	1	20	SPARE	-	2					
3	12	OUTLETS - OFFICE	20	1	0.5				-	1	20	SPARE	-	4					
5	-	SPARE	20	1	-			0.4	1	20	OFFICE LIGHTS	#12	6						
7	-	SPARE	20	1	-			-	-	-	-	-	-	8					
9	-	SPACE	-	-	-			-	-	-	-	-	-	10					
11	-	SPACE	-	-	-			-	-	-	-	-	-	12					
13	-	SPACE	-	-	-			-	-	-	-	-	-	14					
15	-	SPACE	-	-	-			-	-	-	-	-	-	16					
17	-	SPACE	-	-	-			-	-	-	-	-	-	18					
19	-	SPACE	-	-	-			-	-	-	-	-	-	20					
21	-	SPACE	-	-	-			-	-	-	-	-	-	22					
23	-	SPACE	-	-	-			-	-	-	-	-	-	24					
25	-	SPACE	-	-	-			-	-	-	-	-	-	26					
27	-	SPACE	-	-	-			-	-	-	-	-	-	28					
29	-	SPACE	-	-	-			-	-	-	-	-	-	30					

**ELECTRICAL NOTES:**

- EQUIPMENT LAYOUT, ELECTRICAL DETAILS ARE BASED ON THE INFORMATION PROVIDED BY THE OWNER. CONTRACTOR TO COORDINATE ANY CORRESPONDING CHANGES TO EQUIPMENT SELECTION, LAYOUT AND ELECTRICAL REQUIREMENTS WITH THE OWNER.
- CONTRACTOR TO COORDINATE EQUIPMENT REQUIREMENTS WITH ARCHITECTURAL, AND PLUMBING DISCIPLINES.
- SEE ARCHITECTURAL SHEETS FOR ADDITIONAL INFORMATION AND DETAILS ON EQUIPMENT INSTALLATION.
- ALL WORK SHALL CONFORM TO THE LATEST EDITION OF THE NATIONAL ELECTRICAL CODE, THE GOVERNING ELECTRICAL CODE AND ALL OTHER INSPECTION DEPARTMENTS HAVING JURISDICTION. OBTAIN CERTIFICATES OR APPROVAL WHERE REQUIRED.
- ALL MATERIALS FURNISHED SHALL BE NEW AND SHALL BE U.L. LISTED.
- THE DRAWINGS INDICATE SIZE AND GENERAL LOCATION OF WORK. SCALE DIMENSIONS SHALL NOT BE USED. THE EXACT LOCATION AND LOCATION OF ALL LIGHTING FIXTURES, RECEPTACLES AND TELEPHONE OUTLETS, ETC. SHALL BE DETERMINED BY ACTUAL CONDITIONS IN THE FIELD.
- PRIOR TO BIDDING, CONTRACTOR SHALL VISIT THE JOB SITE AND FAMILIARIZE THEMSELVES WITH THE EXISTING CONDITIONS.
- ELECTRICAL CONTRACTOR SHALL COORDINATE HIS WORK WITH OTHER TRADES AND WITH OTHER CONTRACTORS WHOSE WORK MAY AFFECT THIS INSTALLATION.
- ELECTRICAL CONTRACTOR SHALL COORDINATE INCOMING ELECTRICAL SERVICE WITH UTILITY COMPANY AND INCLUDE IN HIS BID ALL CHARGES AND FEES INCURRED IN MODIFICATIONS.
- WHERE MORE THAN ONE SWITCH OCCURS IN THE SAME LOCATION, THEY SHALL BE INSTALLED IN A GANG TYPE BOX UNDER ONE COVER PLATE.
- ELECTRICAL CONTRACTOR SHALL COORDINATE THE TELEPHONE INSTALLATION WITH THE TELEPHONE COMPANY AND THE GENERAL CONTRACTOR.
- ELECTRICAL CONTRACTOR, BEFORE INSTALLING ANY OF THE WORK, SHALL SEE THAT IT DOES NOT INTERFERE WITH CLEARANCES REQUIRED FOR FINISHED COLUMNS, HUNG CEILINGS, PLASTER, PARTITIONS, WALLS, ETC. AS SHOWN IN THE ARCHITECTURAL DRAWINGS AND DETAILS. IF ANY WORK IS INSTALLED AND IT LATER DEVELOPS THAT SUCH DETAILS OR DESIGN CANNOT BE FOLLOWED, THE CONTRACTOR, AT HIS OWN EXPENSE, SHALL MAKE SUCH CHANGES IN THE WORK AS DIRECTED BY THE ARCHITECT. AS WELL AS TO PERMIT THE INSTALLATION OF THE ARCHITECTURAL WORK AS SHOWN ON THE PLANS AND DETAILS. MC MAY BE USED FOR LIGHTING WHIPS.
- PERFORM TEST REQUIRED BY THE OWNER OR THE ENGINEER IN CONNECTION WITH THE OPERATION OF THE ELECTRICAL SYSTEM IN THE BUILDING.
- ALL TESTS SHALL BE MADE IN ACCORDANCE WITH THE LATEST STANDARD OF THE IEEE AND THE NATIONAL ELECTRICAL CODE.
- MINIMUM CONDUCTOR SIZE SHALL BE #12, 600V INSULATION. MINIMUM SIZE CONDUIT SHALL BE 3/4" EMT FOR INTERIOR USE, AND 3/4" RIGID ALUMINUM FOR EXTERIOR USE. USE TYPE MC CABLE COPPER, FOR LIGHTS AND RECEPTACLE CIRCUITS. EXTERIOR FITTINGS SHALL BE CAST BOXES AND COVERS. INTERIOR FITTINGS SHALL BE CAST WHERE EXPOSED ON WALLS.
- CONTRACTOR SHALL INSTALL WIRING AND OTHER CIRCUIT COMPONENTS TO MATCH EQUIPMENT ACTUALLY INSTALLED.
- INSTALL GROUND FAULT RECEPTACLES AT RECEPTACLE LOCATIONS WITHIN 5' OF SINKS OR LAVATORIES, AND AT EXTERIOR LOCATIONS. EXTERIOR RECEPTACLES SHALL ALSO BE WATERPROOF.
- BONDING AND GROUNDING SHALL BE IN ACCORDANCE WITH NFPA 70:230-63, NFPA 70:250-23, 250-71 & 250-72.
- GROUND NEUTRAL IN ACCORDANCE WITH NFPA 70:250-23b.
- FUSES SHALL BE ITT CLASS K5, 250 VOLT, 200,000 AMP INTERRUPTING CAP.
- PROVIDE SERVICES OF A FIRE/SMOKE DETECTION AND ALARM COMPANY TO DESIGN AND INSTALL ALARM SYSTEM TO MEET REQUIREMENTS OF THE STATE FIRE MARSHALL, IF REQUIRED.
- EXTERIOR LIGHTING SHALL BE SHADED OR INWARDLY DIRECTED IN SUCH A MANNER SO THAT NO DIRECT LIGHTING OR GLARE IS CAST BEYOND THE PROPERTY LINE. THE INTENSITY OF SUCH LIGHTING SHALL NOT EXCEED ONE FOOT CANDLE AS MEASURED AT THE ABUTTING PROPERTY LINE.
- ALL ELECTRICAL, MECHANICAL AND PLUMBING PENETRATING FIRE PARTITIONS SHALL BE FIRE CAULKED. (PENETRATIONS THROUGH RATED CONSTRUCTION SHALL BE SEALED WITH A MATERIAL CAPABLE OF PREVENTING THE PASSAGE OF FLAMES AND HOT GASES WHEN TESTED IN ACCORDANCE WITH ASTM-E814.) SEE ARCHITECTURAL DRAWINGS FOR RATED CONSTRUCTION.

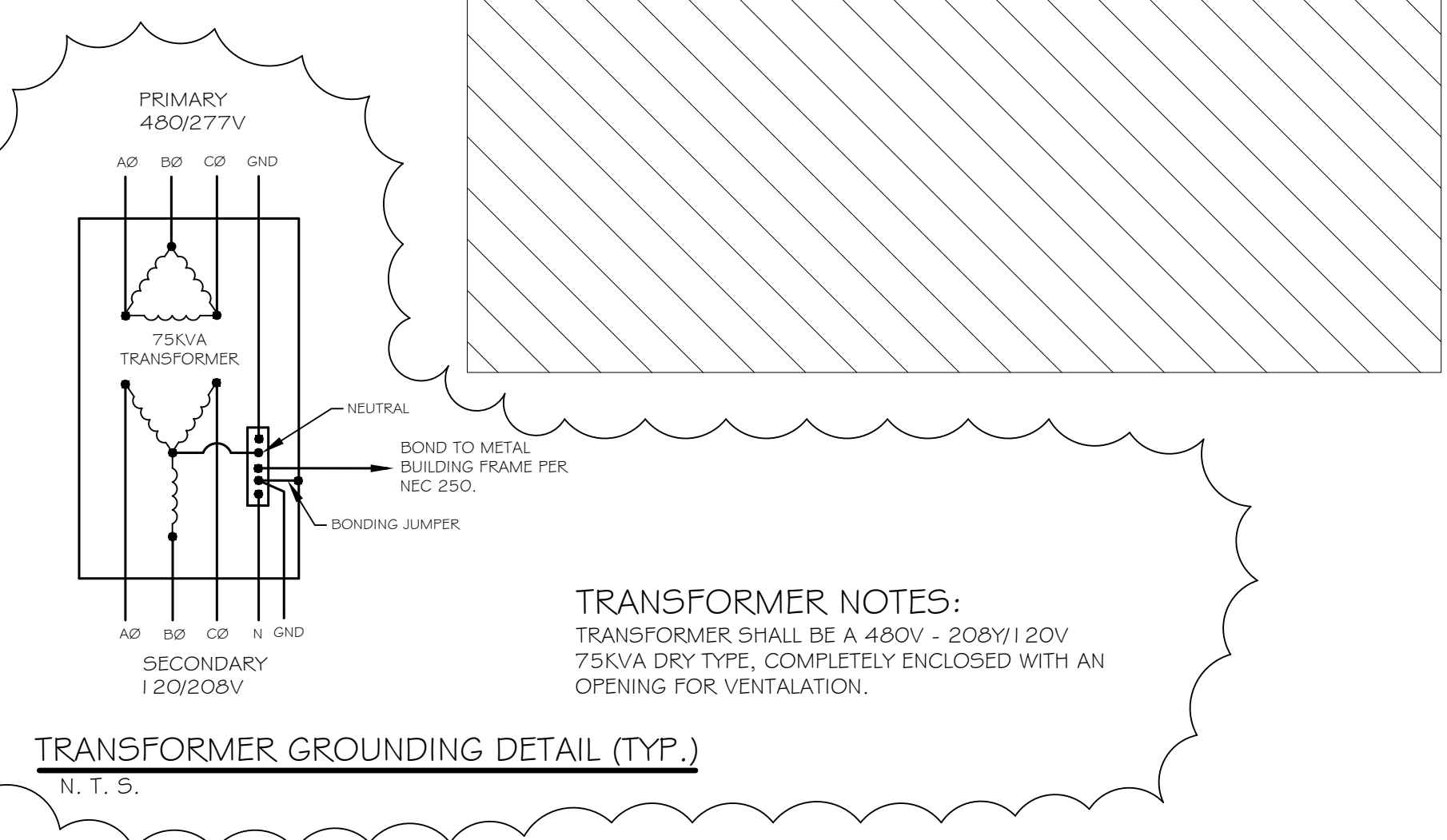
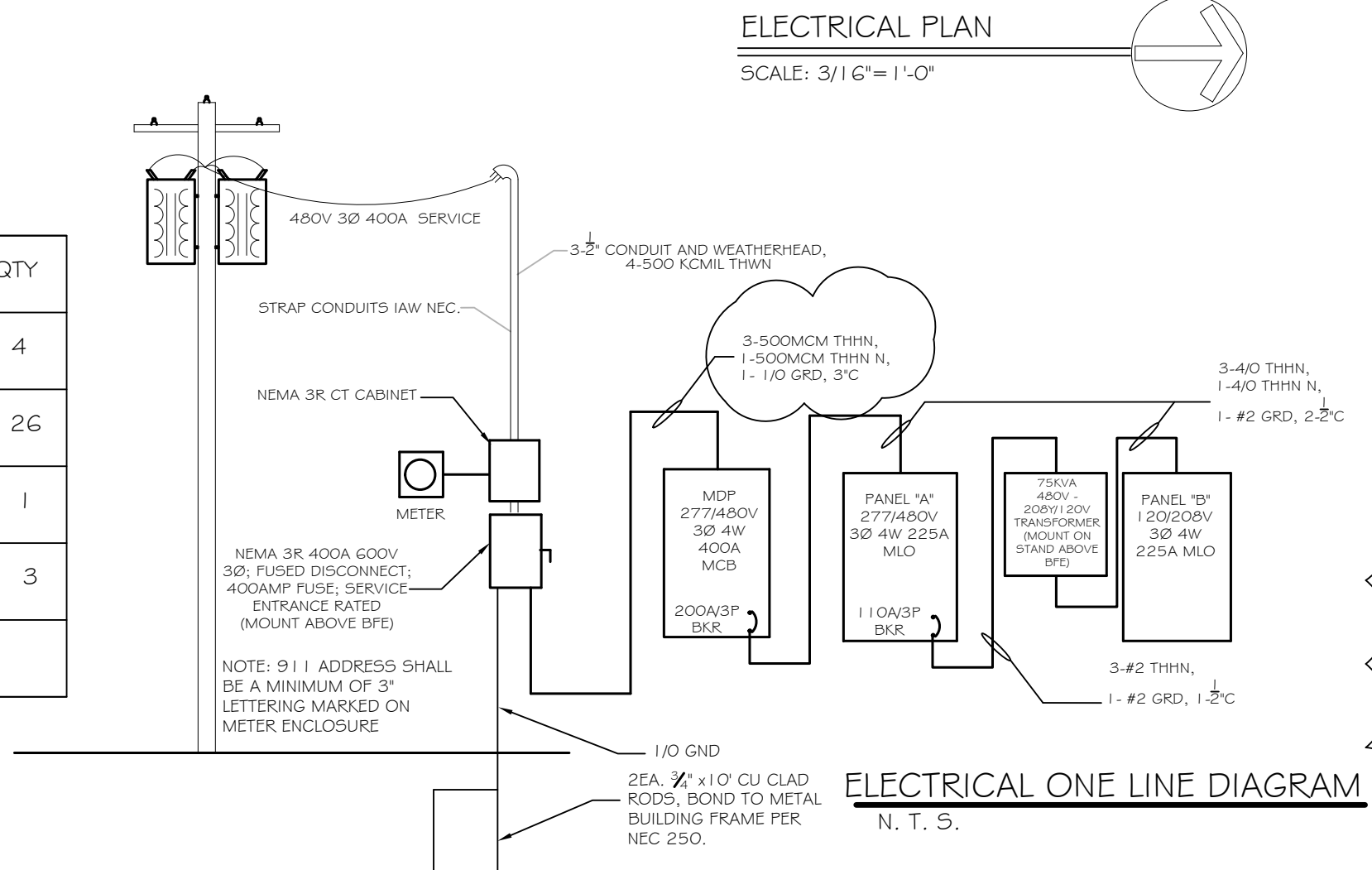
**LEGEND**

- - POWER PANEL
- ⊗ - EMERGENCY EXIT SIGN
- ⊞ - SWITCH
- ⊞ - 3-WAY SWITCH
- ⊞ - DUPLEX OUTLET.
- ⊞ - DISCONNECT SWITCH.
- ⊙ - JUNCTION BOX



**LIGHTING FIXTURE SCHEDULE**

SYM.	DESCRIPTION	MANUFACTURER PRODUCT #	LAMPS	QTY
□	STRIP LIGHT - 4 BULB WITH LENSE	LITHONIA - T-8 T2323MV - 8'	4-T8 25W 120V	4
●	HIGH BAY METAL HALIDE	HUBBLE - 1'6" HB WHITE BL400PHB	1 - 400W	26
⊞	WALL MTD. HALOGEN EMER. / EXIT W/ BATT. BACKUP	LITHONIA LHQM-F-W-3-R-N	2-H12 12W 277V	1
⊞	WALL MTD. HALOGEN EMER. W/ BATT. BACKUP	LITHONIA EU2 LED M12	2-H12 12W 277V	3



ARCHITECTS & ENGINEERS  
DAMMON ENGINEERING, INC.  
CHIEF ENGINEER: KIMMETT DAMMON, P.E.  
448 PINE STREET, SUITE 100  
PHONE: 985-649-6932  
554 OLD SPANISH TRAIL  
SUITE LL, LA 70456  
FAX: 985-641-8990

KOSTMAYER CONSTRUCTION  
FABRICATION YARD  
15140 INTERCOASTAL DR.  
NEW ORLEANS, LOUISIANA 70129

#	DESCRIPTION	DATE	REVISIONS
1	ADD TRANSFORMER DETAIL	8/12/13	

JOB No:	DATE:	CHECKED BY:
06-26-2013	DD	DD

**ELECTRICAL FLOOR PLAN**  
SHEET No: OF  
E1