

SYM.	DESCRIPTION	COMMENTS
STANDARD 120V DUXIE RECEPTAGE @ 15' AFF. (LINES 5, 10, 15)	STANDARD 120V DUXIE RECEPTAGE @ 15' AFF. (LINES 5, 10, 15)	
GFI RECEPTAGE	GFI RECEPTAGE	ALL OUTLETS WITHIN 48" OF A WATER SOURCE SHALL BE GFI
WEATHER PROOF 120V DUXIE RECEPT. @ 30' AFF. (LINES 9, 10)	WEATHER PROOF 120V DUXIE RECEPT. @ 30' AFF. (LINES 9, 10)	
POWER DISCONNECT	POWER DISCONNECT	
ELECTRIC WATER HEATER	ELECTRIC WATER HEATER	
AIR CONDITIONING COND. UNIT SEE W/20 SHEETS FOR UNIT DETAILS	AIR CONDITIONING COND. UNIT SEE W/20 SHEETS FOR UNIT DETAILS	
CEILING FANS	CEILING FANS	

POWER PLAN LEGEND

- LIGHTING LEGEND**
- VENT / LIGHT COMBINATION
 - WALL MTD. EMER/LIGHT W/ 90 MIN. BATT. BACKUP
 - LIGHT ABOVE SINK
 - WALL PACK 150W METAL HALIDE ON PHOTOCELL
 - CAN LIGHTS
 - LIGHT SWITCH
 - THREE WAY LIGHT SWITCH

ELECTRICAL NOTES

- ALL WORK SHALL CONFORM TO THE LATEST EDITION OF THE NATIONAL ELECTRICAL CODE, THE GOVERNING ELECTRICAL CODE AND ALL APPLICABLE LOCAL ORDINANCES, REGULATIONS OR APPROVALS WHERE REQUIRED.
- ALL MATERIALS FURNISHED SHALL BE NEW AND SHALL BE U.L. LISTED.
- THE DRAWINGS INDICATE SIZE AND GENERAL LOCATION OF WORK. SCALE DIMENSIONS SHALL NOT BE USED. THE EXACT LOCATION AND LOCATION OF ALL LIGHTING FIXTURES, RECEPTAGES AND TELEPHONE OUTLETS, ETC. SHALL BE DETERMINED BY ACTUAL CONDITIONS IN THE FIELD.
- FIELD TO BE DETERMINED BY THE CONTRACTOR SHALL VISIT THE JOB SITE AND FAMILIARIZE THEMSELVES WITH THE EXISTING CONDITIONS.
- FIELD TO BE DETERMINED BY THE CONTRACTOR SHALL VISIT THE JOB SITE AND FAMILIARIZE THEMSELVES WITH THE EXISTING CONDITIONS.
- WORK MAY AFFECT THIS INSTALLATION.
- ELECTRICAL CONTRACTOR SHALL COORDINATE ELECTRICAL SERVICE WITH UTILITY COMPANY AND INCLUDE IN HIS BID ALL CHARGES AND FEES INCURRED IN MODIFICATIONS.
- WHERE MORE THAN ONE SWITCH OCCURS IN THE SAME LOCATION, THEY SHALL BE INSTALLED IN A GANG TYPE BOX UNDER ONE COVER PLATE.
- ELECTRICAL CONTRACTOR SHALL COORDINATE THE TELEPHONE INSTALLATION WITH THE TELEPHONE COMPANY AND THE GENERAL CONTRACTOR.
- ELECTRICAL CONTRACTOR, BEFORE INSTALLING ANY OF THE WORK, SHALL SEE THAT IT DOES NOT INTERFERE WITH CLEARANCES REQUIRED FOR FINISHED COLUMNS, HUNG CEILINGS, PLASTER, PARTITIONS, WALLS, ETC. AS SHOWN ON THE ARCHITECTURAL DRAWINGS AND DETAILS. IF ANY WORK IS INSTALLED AND IT LATER DEVELOPS THAT SUCH DETAILS OR DESIGN CANNOT BE FOLLOWED, THE CONTRACTOR, AT HIS OWN EXPENSE, SHALL MAKE SUCH CHANGES IN THE WORK AS MAY BE NECESSARY TO ACCOMMODATE THE ARCHITECTURAL WORK AS SHOWN ON THE PLANS AND DETAILS.
- PERFORM TEST REQUIRED BY THE OWNER OR THE ENGINEER IN CONNECTION WITH THE OPERATION OF THE ELECTRICAL SYSTEM IN THE BUILDING.
- ALL TESTS SHALL BE MADE IN ACCORDANCE WITH THE LATEST STANDARD OF THE IEEE AND THE NATIONAL ELECTRICAL CODE.
- MINIMUM CONDUCTOR SIZE SHALL BE #12, 600V INSULATION. MINIMUM SIZE CONDUIT SHALL BE 3/4" EMT FOR INTERIOR USE AND #4 RIGID ALUMINUM FOR EXTERIOR USE. USE TYPE NMC CABLE COPPER FOR LIGHTS AND RECEPTAGE CIRCUITS. EXTERIOR FITTINGS SHALL BE CAST BRONZE AND COVERS, INTERIOR FITTINGS SHALL BE CAST IRON EXPOSED ON WALLS. STAMPED BOXES MAY BE USED ABOVE CEILINGS IN AIR CONDITIONED SPACES, WHERE LAY IN FIXTURES ARE IN USE. USE 1/4" ALLOWED FOR 6" WIDTH.
- CONTRACTOR SHALL INSTALL WIRING AND OTHER CIRCUIT COMPONENTS TO MATCH EQUIPMENT ACTUALLY INSTALLED.
- CONTRACTOR SHALL LOCATE ALL WORK WITHIN 5' OF SINKS OR LAVATORIES, AND IN EXTERIOR LOCATIONS, EXTERIOR RECEPTAGES SHALL ALSO BE WATERPROOF.
- BONDING AND GROUNDING SHALL BE IN ACCORDANCE WITH NFPA 70:250.63, NFPA 70:250.71 & 250.72.
- GROUND NEUTRAL IN ACCORDANCE WITH NFPA 70:250.23b.
- FUSES SHALL BE 1/2" CLASS K5, 250 VOLT, 200,000 AMP INTERRUPTING CAP.
- REMOVE SERVICES OF A PREVIOUS DETECTION AND ALARM COMPANY TO DESIGN AND INSTALL ALARM SYSTEM TO MEET ALL REQUIREMENTS OF THE NATIONAL FIRE PROTECTION ASSOCIATION (NFPA) AND ALL APPLICABLE LOCAL ORDINANCES.
- EXTERIOR LIGHTING SHALL BE SHARED OR INWARDY DIRECTED IN SUCH A MANNER SO THAT NO DIRECT LIGHTING OR GLARE IS CAST BEYOND THE PROPERTY LINE. THE INTENSITY OF SUCH LIGHTING SHALL NOT EXCEED ONE FOOT CANDLE AS MEASURED AT THE ABUTTING PROPERTY LINE.
- ALL ELECTRICAL, MECHANICAL AND PLUMBING PENETRATING FIRE PARTITIONS SHALL BE FIRE CALKED. PENETRATIONS THROUGH RATED CONSTRUCTION SHALL BE SEALED WITH A MATERIAL CAPABLE OF PREVENTING THE PASSAGE OF FLAMES AND GASES IN ACCORDANCE WITH ASTM E 813.

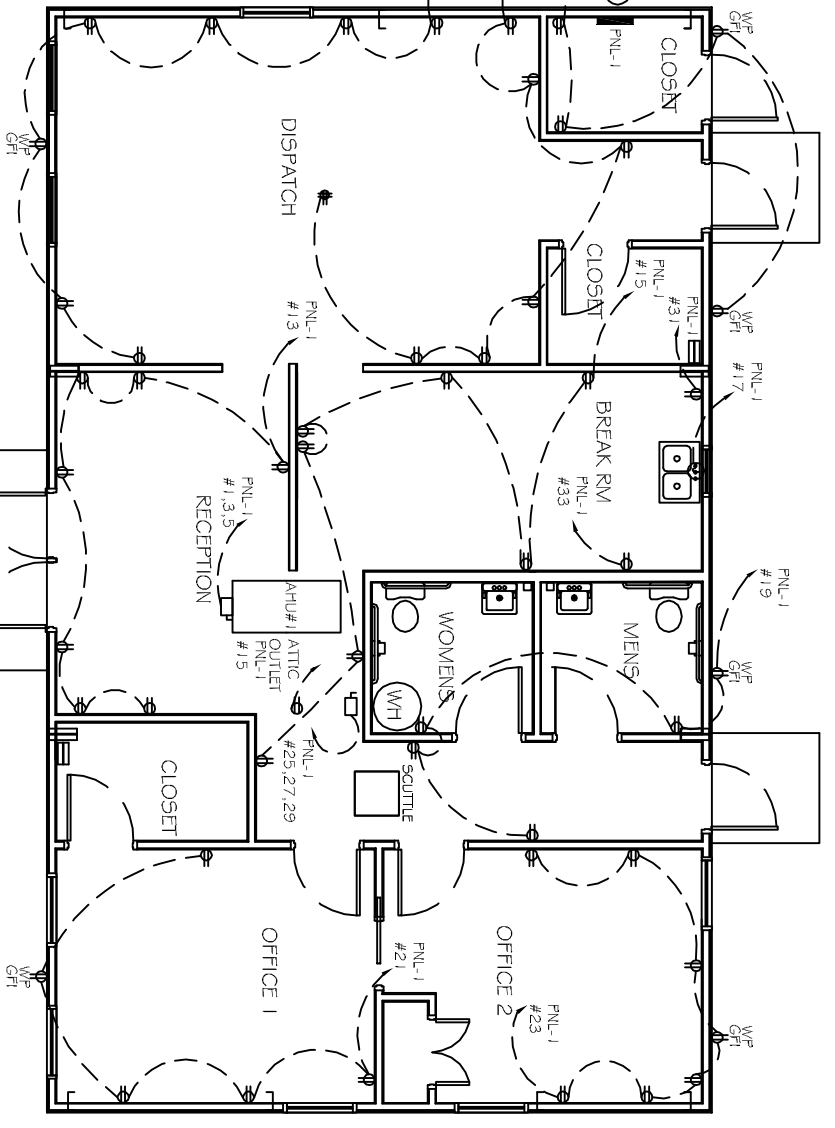
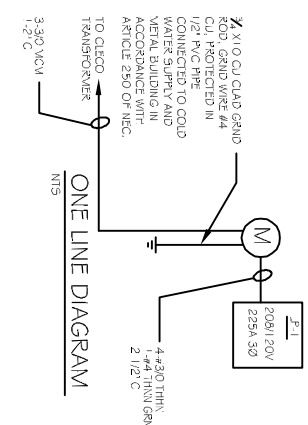
CLECO Power LLC - Electrical Load Summary

Project Name: **LANDIS TRANSPORT LLC**
 Project Address: **LOT 21 #400 LEONARD LOOP**
 City / Town: **ST TAMMANY PARISH, COVINGTON, LOUISIANA**
 Intended Use: **Office/Warehouse Building**
 Requested Service: **208** Volts **3** Phase **4** Wires
 Service Entrance Size: **225** Amps
 HVAC Tonnage: **5.00** Tons
 Largest Motor: **N/A** HP (Note: Motors above 20 hp may require reduced voltage starting and are never recommended for use with 120/240V, 3 phase, 4W services.)
 Total Building Square Footage: **1,500** Square Feet
 Individual Unit Square Footage: **N/A** Square Feet (Multiple Occupancy)
 Individual Unit Designation: **N/A** (Multiple Occupancy)

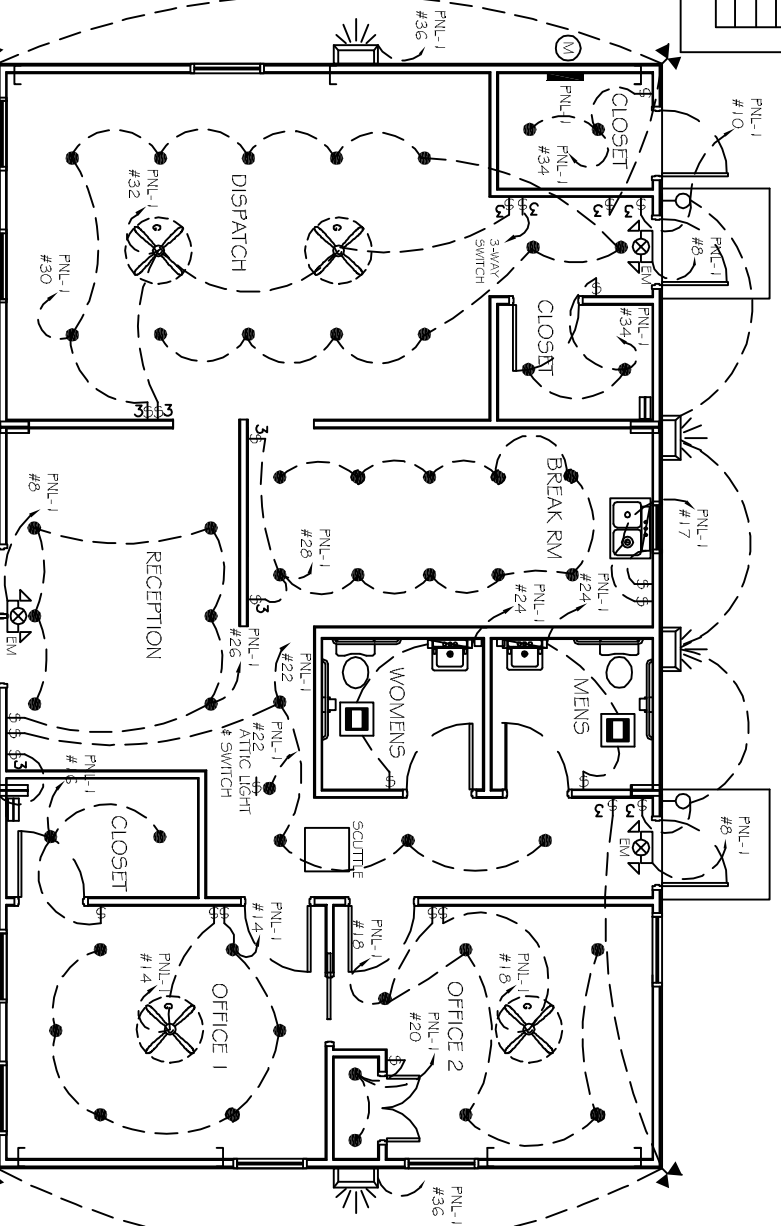
LOAD SOURCE	1- ϕ - kVA	3 ϕ - kVA	or	1- ϕ - kW	3 ϕ - kW
Building Lighting	15,000	or	-	-	-
Electric Water Heating	7,200	or	-	-	-
Heat Pumps	-	or	-	-	-
Supplemental Heat System	-	or	-	-	-
Air Conditioning/Condensing Units	9,600	or	-	-	-
Electrical Heating (Primary) - AHUs	10,800	or	-	-	-
Cooling	1,600	or	-	-	-
Refrigeration	-	or	-	-	-
Receptacles (Standard)	7840	or	-	-	-
Receptacles (Computer)	-	or	-	-	-
Receptacles (Exclude HVAC)	-	or	-	-	-
Total Motors (Exclude HVAC)	6,000	or	-	-	-
Extensor Lighting	-	or	-	-	-
Miscellaneous - Ceiling Fans	-	or	-	-	-
Other (Specify)	-	or	-	-	-

OUT. TRN. NO.	LOAD DESCRIPTION	BREAKER	LOAD	LOAD	BREAKER	LOAD DESCRIPTION	TRN. NO.
NO.	LOCATION	AMP	(kVA)	(kVA)	POUL	LOCATION	NO.
1			3200	3600			2
3	A/C COMPRESSOR	30	3200	3600	3	HEATER 15kW	4
5			3200	3600			6
7	RECEPTION ROOM	20	11.20	900	1	DIST. DIFFERENTIAL LIGHTS	8
9	DISPATCH ROOM	20	11.20	1600	1	DISPATCH LIGHTING	9
11	DISPATCH ROOM	20	6.40	800	1	DISPATCH LIGHTS	10
12	EXTERIOR 20' SPACE LIGHTS	20	11.20	1400	1	DISPATCH LIGHTS	12
13	RECEPTION ROOM	20	11.20	1400	1	DISPATCH LIGHTS	14
15	DISPATCH ROOM	20	12.80	400	1	DISPATCH LIGHTS	16
17	DISPATCH ROOM	20	14.00	1300	1	DISPATCH LIGHTS	18
19	DISPATCH ROOM	20	800	400	1	DISPATCH LIGHTS	20
21	DISPATCH ROOM	20	800	400	1	DISPATCH LIGHTS	22
23	DISPATCH ROOM	20	11.20	800	1	DISPATCH LIGHTS	24
25	DISPATCH ROOM	20	2400	1300	1	DISPATCH LIGHTS	26
27	DISPATCH ROOM	20	2400	2000	1	DISPATCH LIGHTS	28
29	DISPATCH ROOM	20	2400	2400	1	DISPATCH LIGHTS	30
31	DISPATCH ROOM	20	1400	400	3	DISPATCH LIGHTS	32
33	DISPATCH ROOM	20	1400	800	1	DISPATCH LIGHTS	34
35	DISPATCH ROOM	20	1400	400	1	DISPATCH LIGHTS	36
37	DISPATCH ROOM	20	1400	400	1	DISPATCH LIGHTS	38
39	DISPATCH ROOM	20	1400	400	1	DISPATCH LIGHTS	40
41	DISPATCH ROOM	20	1400	400	1	DISPATCH LIGHTS	42
			TOTAL CONNECTED LOAD (kVA) 51,180				
			16,860	15,000			
			16,860	16,230			

VOLTAGE: 208/120V, 225A, 3Ø, 4W
 ENCLOSURE: SURFACE MOUNTED EQUIPMENT GND BAR
 W/225 MAIN BRK - 22000 AIC/NEWA



POWER PLAN
SCALE: 1/4" = 1'



LIGHTING PLAN
SCALE: 1/4" = 1'

LANDIS TRANSPORT LLC
OFFICE/WAREHOUSE BUILDING
 LOT 21 #400 LEONARD LOOP
 ST. TAMMANY PARISH, COVINGTON, LOUISIANA
 ADDRESS LINE 3

JOB No: 2164
 DATE: 01-30-2013
 CD

DAMMON ENGINEERING, INC.
 Architects & Engineers

CHIEF ENGINEER: EMMETT DAMMON, P.E.
 CHIEF ARCHITECT: KEVIN KINCHEN
 554 OLD SPANISH TRAIL
 SUITE 101, LA 70458

#	DESCRIPTION	DATE

ELECTRICAL PLAN

SHEET No: 8 OF 9

E-1