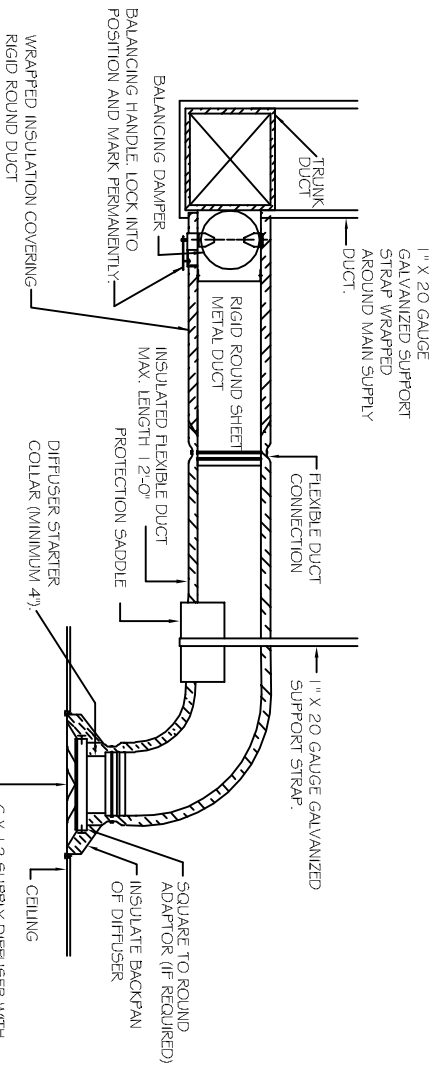
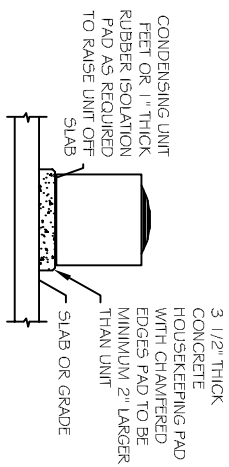


HVAC PLAN
SCALE: 1/4" = 1'

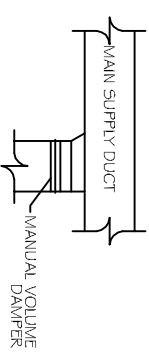


- NOTES:
- 1) PROVIDE AT FLEXIBLE DUCT CONNECTION "PANDUIT" DRAWBAND ON THE INTERIOR FLEXIBLE DUCT HEAT.
 - 2) PROVIDE MINIMUM 4" COLLARS FOR ATTACHMENT OF THE FLEXIBLE DUCT TO ROUND DUCT, DAMPERS AND DIFFUSERS.
 - 3) BAND RIGID ROUND DUCT INSULATION TO DUCT AND PROVIDE TAPE FOR INSULATION OVERLAP.

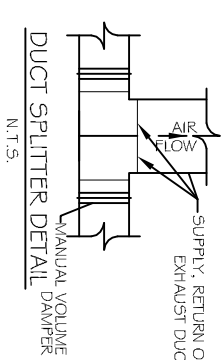
DIFFUSER CONNECTION DETAIL-FLEX DUCT
N.T.S.



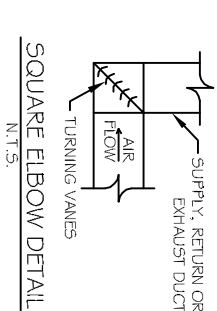
CONDENSING MOUNTING DETAIL
N.T.S.



SUPPLY DUCT TAKE-OFF DETAIL
N.T.S.



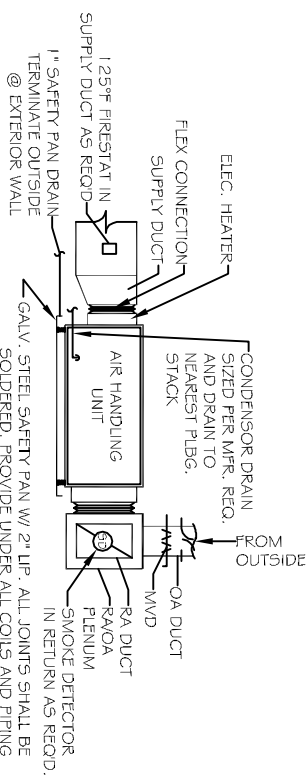
DUCT SPLITTER DETAIL
N.T.S.



SQUARE ELBOW DETAIL
N.T.S.

EXHAUST FAN SCHEDULE				
NO.	LOCATION	CFM	VOLTAGE	TYPE
1	RESTROOM	100	120	VENT BROWN

A/C UNIT SCHEDULE					
NO.	TOTAL BTU	CFM	O.A. ELEC. VOLTAGE	HEAT ELEC. VOLTAGE	COMMENTS
1	60,000	2,000	210	15 KW	209V, 3Ø



TYPICAL HORIZONTAL AHU DETAIL
SCALE: N.T.S.

HVAC NOTES

1. CONCEALED DUCTWORK TO BE GALVANIZED SHEET METAL LINED WITH FIBROUS GLASS DUCT LINER, 1" THICK, MINI R-6, INSTALLED PER SMACNA STANDARDS.
2. EXPOSED DUCTWORK TO BE GALVANIZED SHEET METAL LINED WITH FIBROUS GLASS DUCT LINER, 1" THICK, MINI R-6, INSTALLED PER SMACNA STANDARDS.
3. ROUND FLEXIBLE DUCT TO BE UL-181, CLASS 1, AIR DUCT MATERIALS.
4. DUCT SIZES SHOWN ARE CLEAR INSIDE DIMENSIONS.
5. IN ALL SYSTEMS OVER 2000 CFM AND LESS THAN 15,000 CFM, SMOKE DETECTORS SHALL BE INSTALLED IN ACCORDANCE WITH NFPA 72E IN THE RETURN DUCT DOWNSTREAM OF THE AIR HANDLING UNIT AND ALL FILTERS TO AUTOMATICALLY STOP THE FAN.
6. PROVIDE U.L. LISTED 1.25" FIRESTAT IN RETURN AIR OF EACH SYSTEM UNDER 2000 CFM TO SHUT DOWN THE FAN IN THE EVENT OF FIRE.
7. PROVIDE U.L. RATED FIRE DAMPERS WHERE REQUIRED BY CODE, INCLUDING OUTSIDE AIR INTAKES, FIRE-RATED ASSEMBLIES AND WHERE REQUIRED BY CODE, INCLUDING OUTSIDE AIR INTAKES.
8. CONDENSATE DRAINS TO BE PVC PIPE RUN TO FLUWIBERS R-TRAP WITHIN FIVE FEET OF AIR HANDLING UNITS.
9. ALL AIR HANDLING SYSTEMS TO BE BALANCED TO ASSURE PROPER AIR FLOWS PER PLANS.
10. ALL THERMOSTATS TO BE AUTOMATIC CHANGEOVER WITH HEAT SWITCH.
11. EXHAUST FAN EQUAL TO BROWN MODEL NO. 100 CF OR EQUAL. FAN SHALL BE CONTROLLED BY A SWITCH ON THE WALL IN THE SAME LOCATION AS LIGHT SWITCH(S).
12. PROVIDE AND INSTALL WATER PROOF GRILLE VENT IN PROPER ROOF LOCATION FOR PLUMBING FIXTURE EXHAUST.
13. ALL SUPPLY AIR VENTS SHALL BE EQUIPPED WITH AIR CONTROL DAMPERS.
14. LOCATE OUTDOOR UNITS AS SHOWN ON ARCH. DWGS.
15. REFRIGERANT LINES SHALL BE SIZED BY UNIT MANUFACTURER AND INSTALLED ACCORDING TO MANUFACTURER'S INSTRUCTIONS.
16. FRESH AIR SHALL BE SUPPLIED TO EACH AIR HANDLER THROUGH EXTERIOR WALL DUCT SUPPLIED WITH A CONTROL DAMPER.
17. INSTALL FIRE DAMPER WHERE 5.A. * R.A. DUCTS PENETRATE 1 HOUR RATED CEILINGS.
18. ALL ELECTRICAL, MECHANICAL, AND PLUMBING PENETRATING FIRE WALLS SHALL BE FIRE CALKED. (PENETRATIONS THROUGH RATED CONSTRUCTION SHALL BE SEALED WITH A MATERIAL CAPABLE OF PREVENTING THE PASSAGE OF FLAME/AND HOT GASES WHEN TESTED IN ACCORDANCE WITH ASTM-E-814).
19. ALL MECHANICAL SYMBOLS ARE DRAWN DIAGRAMMATICALLY. CONTRACTOR TO VERIFY WITH OWNER LOCATIONS OF VENTS, DAMPERS, REGISTERS, ETC.
20. REFER TO STRUCTURAL DRAWINGS TO COORDINATE LOCATIONS; * MOUNTING OF MECHANICAL EQUIPMENT.
21. FLEXIBLE DUCTWORK LENGTH NOT TO EXCEED 10'-0".
22. REFER TO REFLECTED CEILING PLAN FOR FINAL GRILLE AND DIFFUSER LOCATIONS AND COORDINATE AS REQUIRED.
23. FINAL LOCATION OF TEMPERATURE CONTROLS TO BE COORDINATED WITH OWNER AT JOB SITE.
24. PROVIDE AND INSTALL SMOKE DETECTORS AS APPROVED BY LOCAL AHJ'S. PLACE NEAR R/A AND S/A OPENINGS OF AHU AND PROVIDE WITH ACCESS PANEL. WIRING BY ELECTRICAL CONTRACTOR.
25. FRESH AIR INTAKES ARE REQUIRED TO HAVE MOTORIZED OR GRAVITY DAMPERS TO SHUT OFF WHEN SYSTEM IS NOT RUNNING. ALL THERMOSTATS MUST BE PROGRAMMABLE. SEE SECTIONS 502.4.4 OR 503.2.4.3 OF THE 2006 INTERNATIONAL ENERGY CODE.
26. ALL DUCT WORK IS SHOWN DIAGRAMMATIC.

LANDIS TRANSPORT LLC
OFFICE/WAREHOUSE BUILDING
LOT 2 | #400 LEWARD LUF
ST. TAMMANY PARISH, COVINGTON, LOUISIANA
ADDRESS LINE 3

JOB No: 2164 DATE: 01-30-2012
DRAWN BY: JCT CHECKED BY: CD



DAMMON
ENGINEERING, INC.
Architects & Engineers

CHIEF ENGINEER: EMMETT DAMMON, P.E.
CHIEF ARCHITECT: KEVIN KINCHEN
554 OLD SPANISH TRAIL
SUDELL, LA 70458

dammoneengineering.com
dammone@bellco.th.net
PHONE: 985-649-5832
FAX: 985-641-5950

REVISIONS	DATE
# DESCRIPTION	

MECHANICAL
PLAN

SHEET No: 7 OF 9

M-1