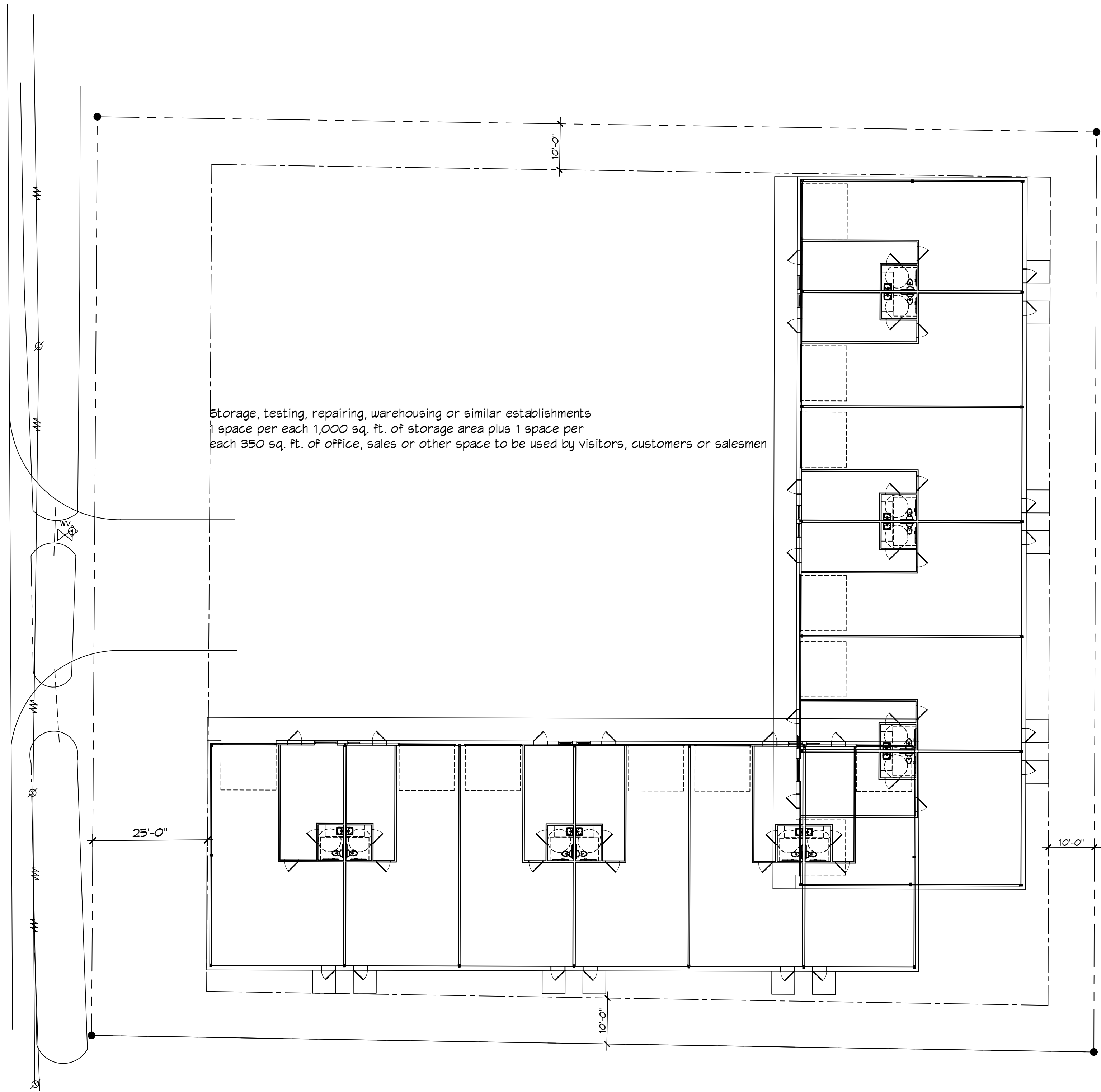
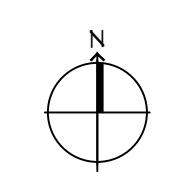


FILE NAME: J:\\_Office Work\2025\250310\250310.dwg PLOT DATE: 8/26/2025 PLOT TIME: 10:53:24 AM



Storage, testing, repairing, warehousing or similar establishments  
 1 space per each 1,000 sq. ft. of storage area plus 1 space per  
 each 350 sq. ft. of office, sales or other space to be used by visitors, customers or salesmen



**3 SITE PLAN**  
 SCALE: 1" = 15'-0"

<b>PARKING</b>
Storage, testing, repairing, warehousing or similar establishments 1 space per each 1,000 sq. ft. of storage area plus 1 space per each 350 sq. ft. of office, sales or other space to be used by visitors, customers or salesmen
<b>PLANNING</b>
LOT ??? ZONED NC-4 NEIGHBORHOOD INSTITUTIONAL
<b>FLOOD ZONE</b>
ZONE "AE" ELEVATION 12
<b>BUILDING ELEVATION</b>
BASE FLOOD ELEVATION = 12.0' FINISHED FLOOR ELEVATION = 14.0'

**DAMMON ENGINEERING, INC.**  
 LOUISIANA & MISSISSIPPI  
 Chief Engineer: Brian Watch, PE  
 554 Old Spanish Trail  
 Slidell, LA 70468  
 www.dammoneengineering.com  
 info@dammoneengineering.com  
 PH: 985.649.9832

#	DESCRIPTION	DATE

SEAL:

**NEW OFFICE WAREHOUSE**  
**NATAL CONSTRUCTION**  
 NELLIE DRIVE  
 SLIDELL, LA 70459  
 JOB No: 2402 DATE: 08-02-2025  
 DRAWN BY: JWS CHECKED BY: C&D

SHEET TITLE:  
 SITE PLAN

DRAWING NUMBER:  
**C101**  
 SHEET No: 3 of 1