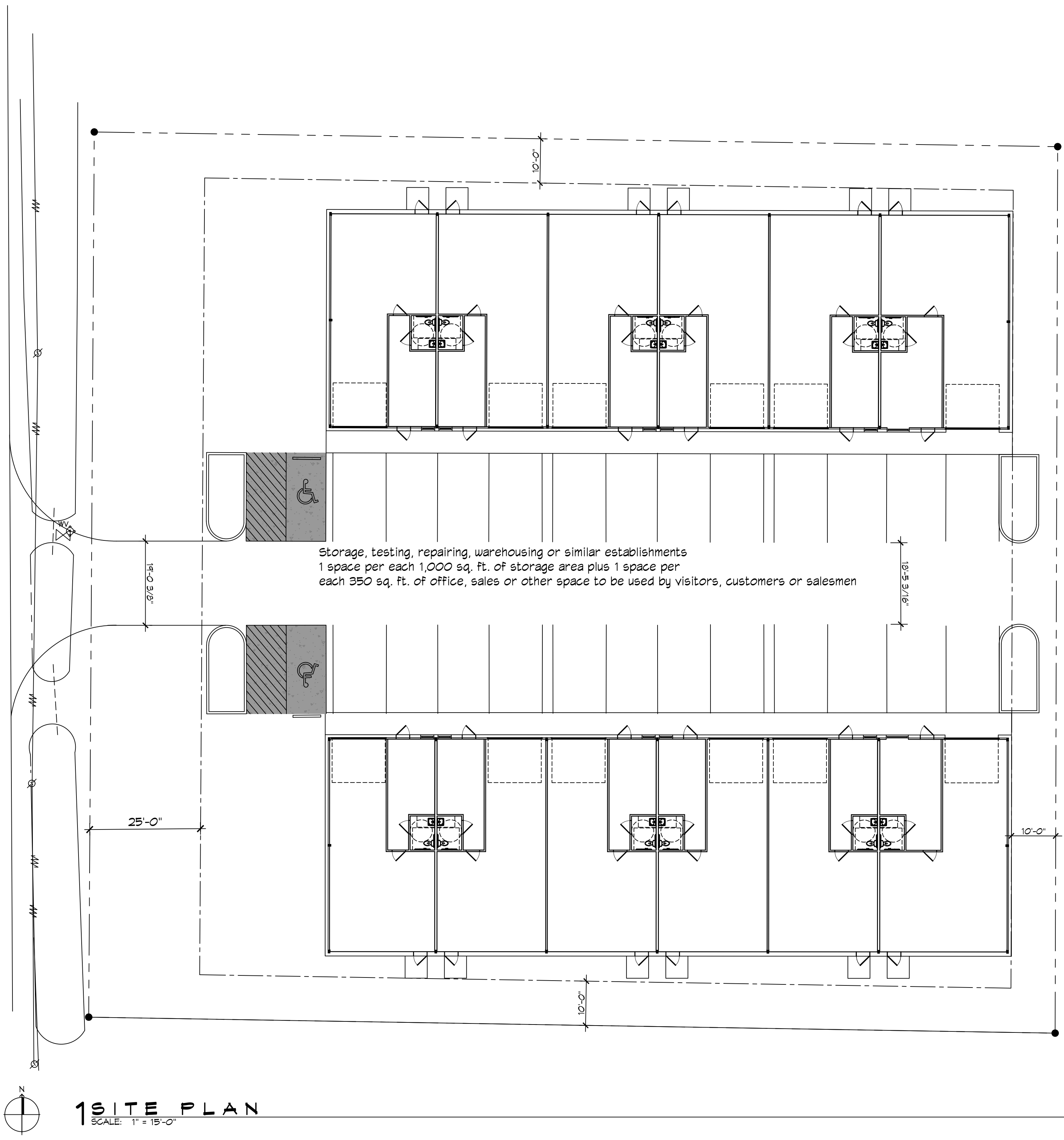


P:\E-MAILS\JVS\Office\Architectural\New\554 Old Spanish Trail\554-02-2025-0118 - Site Plan.dwg PLOT DATE: 8/14/25 10:03:24 AM



1 SITE PLAN
 SCALE: 1" = 15'-0"

PARKING
Storage, testing, repairing, warehousing or similar establishments 1 space per each 1,000 sq. ft. of storage area plus 1 space per each 350 sq. ft. of office, sales or other space to be used by visitors, customers or salesmen
PLANNING
LOT ??? ZONED NC-4 NEIGHBORHOOD INSTITUTIONAL
FLOOD ZONE
ZONE "AE" ELEVATION 12
BUILDING ELEVATION
BASE FLOOD ELEVATION = 12.0' FINISHED FLOOR ELEVATION = 14.0'

DAMMON
ENGINEERING, INC.
 LOUISIANA & MISSISSIPPI

Chief Engineer: Brian Watch, PE
 554 Old Spanish Trail
 Slidell, LA 70468
 www.dammonengineering.com
 info@dammonengineering.com
 PH: 985.649.9332

#	DESCRIPTION	DATE

SEAL:

NEW OFFICE WAREHOUSE
NATAL CONSTRUCTION
 NELLIE DRIVE
 SLIDELL, LA 70459
 JOB No: 2402 | DATE: 08-02-2025
 DRAWN BY: JVS | CHECKED BY: CKD

SHEET TITLE:
 SITE PLAN

DRAWING NUMBER:
C101
 SHEET No: 3 of 1