

DAMMON
ENGINEERING, INC.

CHIEF ENGINEER
EMMETT
DAMMON, P.E.

CHIEF ARCHITECT
ROBERT
WILTSE

554 OLD SPANISH TRAIL
SLIDELL, LA. 70458
OFFICE: 985-649-5832
FAX: 985-641-5950

WEBSITE:
WWW.DAMMONENGINEERING.COM

EMAIL:
DAMMONENG@BELLSOUTH.NET

- ARCHITECTURE
- ENGINEERING
- STUDIES
- PLANNING
- INVESTIGATION
- EXPERT WITNESS

NEWMAN
TRANSPORT LLC.
63336
OLD MILITARY RD.
PEARL RIVER LA.

SECTION
AND
ELEVATIONS

Robert Wiltse

REV:

SCALE: AS NOTED

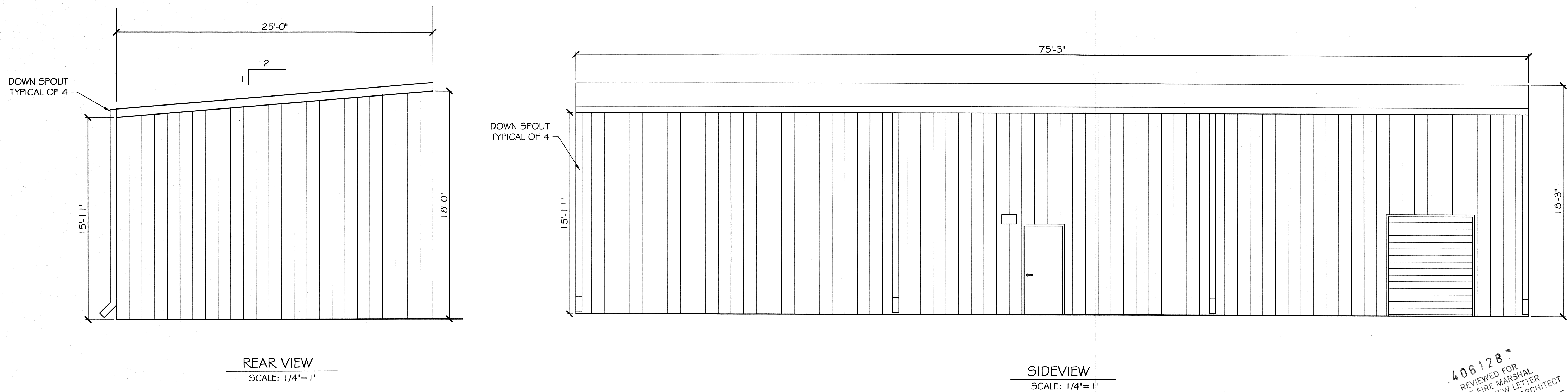
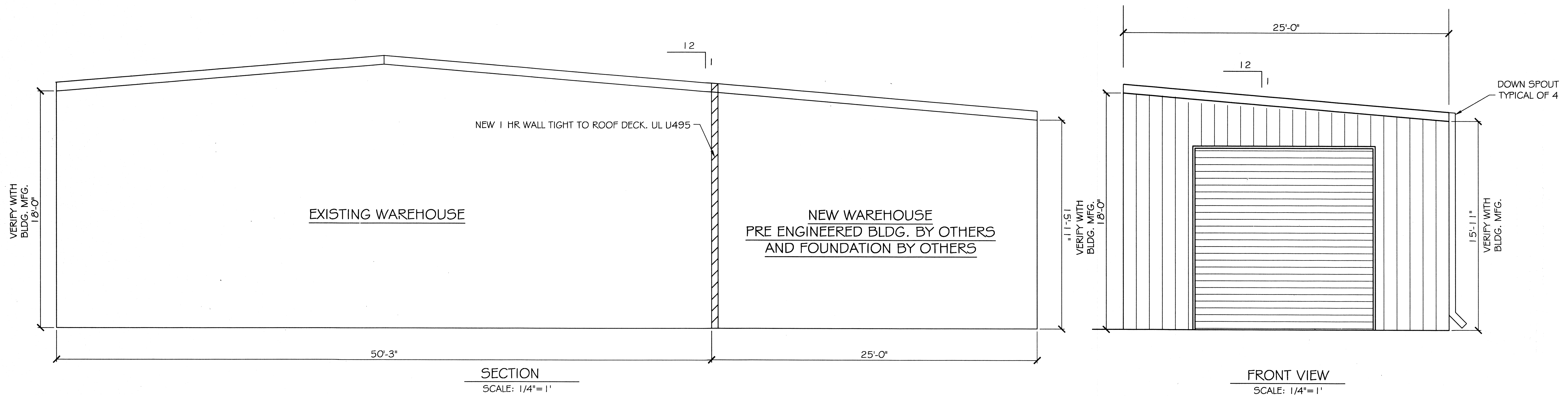
JOB#: 2124

DATE: 10-19-11

SHEET 4

A-2

OF 4



406128
REVIEWED FOR
STATE FIRE MARSHAL
AS PER REVIEW LETTER
BY JOHN L. WHITAKER ARCHITECT
John L. Whitaker