

DAMMON
ENGINEERING, INC

CHIEF ENGINEER
EMMETT
DAMMON, P.E.
CHIEF ARCHITECT
ROBERT
MILTSE

1095 FLORIDA AVENUE
SUDELL, LA. 70458
OFFICE: 985-649-5832
FAX: 985-641-5950

WEBSITE:
WWW.DAMMONENGINEERING.COM
EMAIL:
DAMMONENG@BELLOUTH.NET

ARCHITECTURE
ENGINEERING
STUDIES
PLANNING
INVESTIGATION
EXPERT WITNESS

SUITES 5-6
TENANT
BUILDOUT

DEREK DRIVE
PROPERTY
1303/1307 DEREK DR
HAMMOND, LA

BUILDING
SECTION

REV:

SCALE: AS NOTED

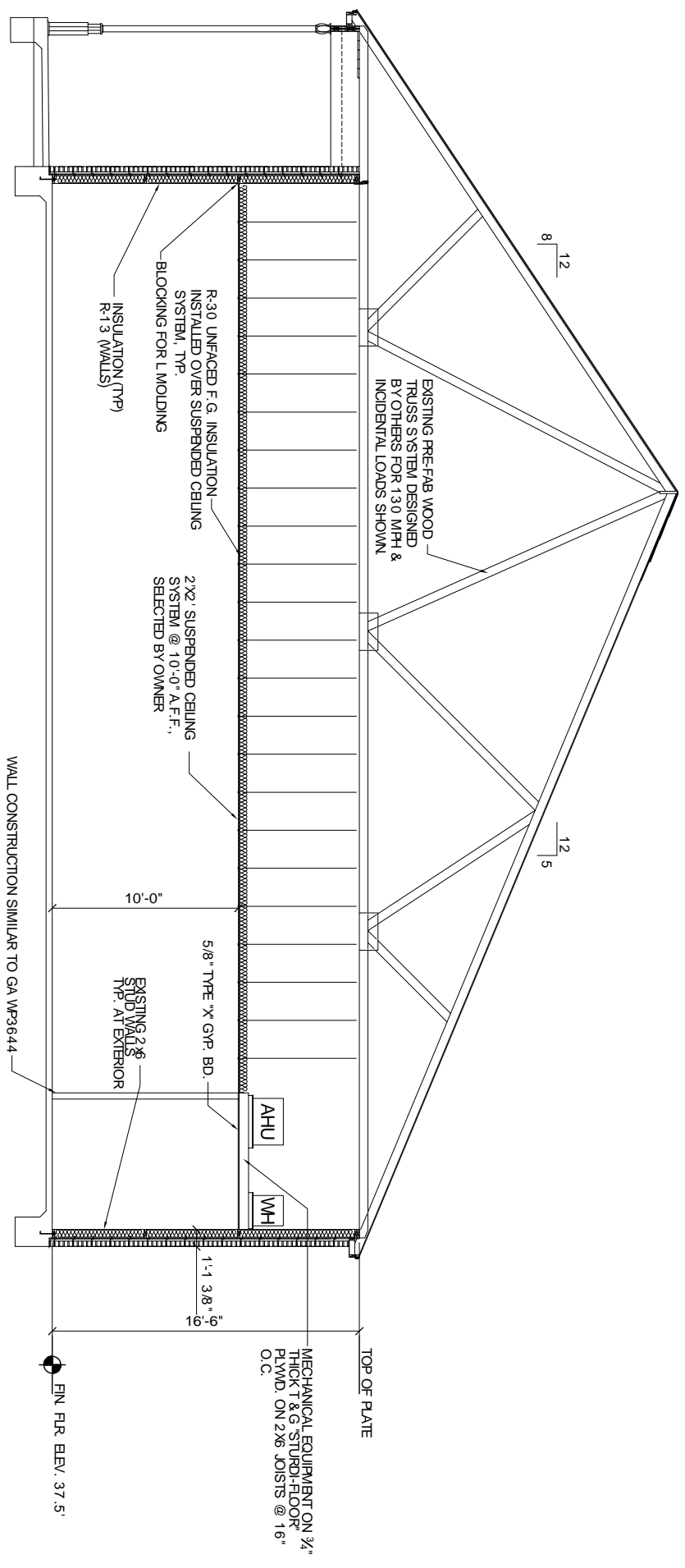
JOB#: 1984

DATE: 12-9-08

SHEET 4

A-2

OF 11



TYPICAL BUILDING SECTION
SCALE 1/4" = 1'-0"

