

**DAMMON ENGINEERING, INC.**

CHIEF ENGINEER  
EMMETT DAMMON, P.E.

CHIEF ARCHITECT  
ROBERT WILTSE

1095 FLORIDA AVENUE  
SLIDELL, LA. 70458  
OFFICE: 985-649-5832  
FAX: 985-641-5950

WEBSITE:  
WWW.DAMMONENGINEERING.COM

EMAIL:  
DAMMONENG@BELLSOUTH.NET

ARCHITECTURE

ENGINEERING

STUDIES

PLANNING

INVESTIGATION

EXPERT WITNESS

TENANT  
BUILD-OUT  
SUITES  
1 & 2

DEREK DRIVE  
PROPERTY  
1303/1307  
DEREK DRIVE  
HAMMOND, LA

REFLECTED  
CEILING PLAN

REV:

SCALE: AS NOTED

JOB#: 1908

DATE: 01-28-11

SHEET 5

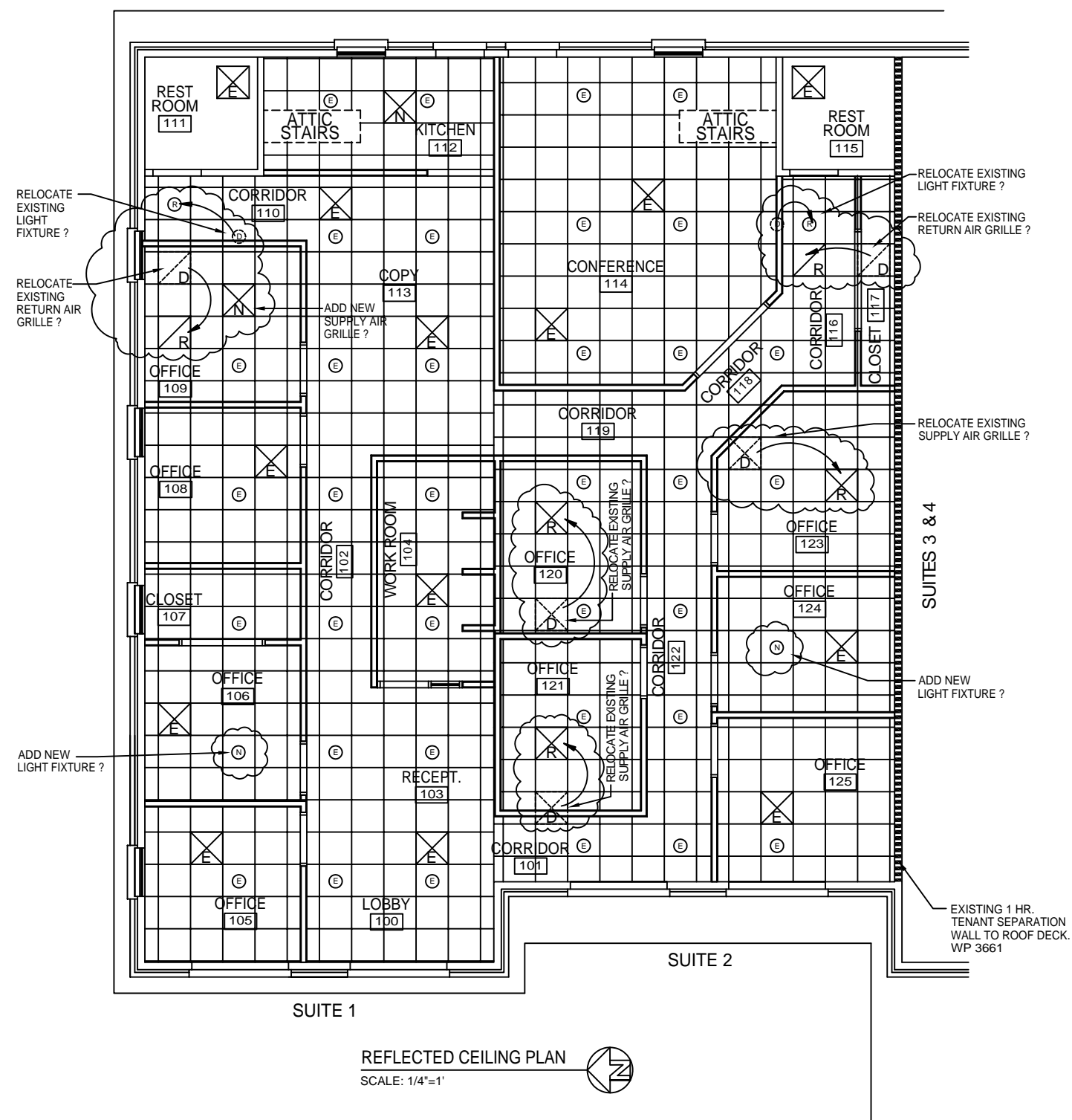
**A-2**

PRELIMINARY (NOT FOR CONSTRUCTION)

OF 9

**LEGEND**

- EXISTING SUPPLY AIR GRILLE TO REMAIN
- EXISTING RETURN AIR GRILLE TO REMAIN
- NEW SUPPLY AIR GRILLE
- RELOCATED SUPPLY AIR GRILLE
- RELOCATED RETURN AIR GRILLE
- EXISTING RETURN AIR GRILLE TO BE DEMOLISHED OR RELOCATED
- EXISTING RETURN AIR GRILLE TO BE DEMOLISHED OR RELOCATED
- EXISTING CAN LIGHT FIXTURE TO REMAIN
- EXISTING CAN LIGHT FIXTURE TO BE DEMOLISHED OR RELOCATED
- EXISTING CAN LIGHT FIXTURE RELOCATED
- NEW CAN LIGHT FIXTURE



REFLECTED CEILING PLAN  
SCALE: 1/4"=1'

