

FUTUREPROOF
 822 1/2 BARONNE ST.
 NEW ORLEANS, LA
 70113
 T: 504-342-4925
 F: 504-342-4243
 OFFICE@FUTUREPROOFNO.LA.COM
 WWW.FUTUREPROOFNO.LA.COM



*FUTUREPROOF IS A LIMITED LIABILITY COMPANY AND CANNOT BE RESPONSIBLE FOR CONSTRUCTION. DRAWINGS MADE BY FUTUREPROOF MUST BE STAMPED BY A LICENSED ARCHITECT, ENGINEER, OR BUILDER TO BE USED FOR CONSTRUCTION. THE DRAWINGS HAVE BEEN MADE TO THE BEST OF FUTUREPROOF'S KNOWLEDGE, TO COMPLY WITH ACCEPTABLE BUILDING CODES, BUT SHOULD BE CHECKED BY THE LIABLE LICENSED PROFESSIONAL.

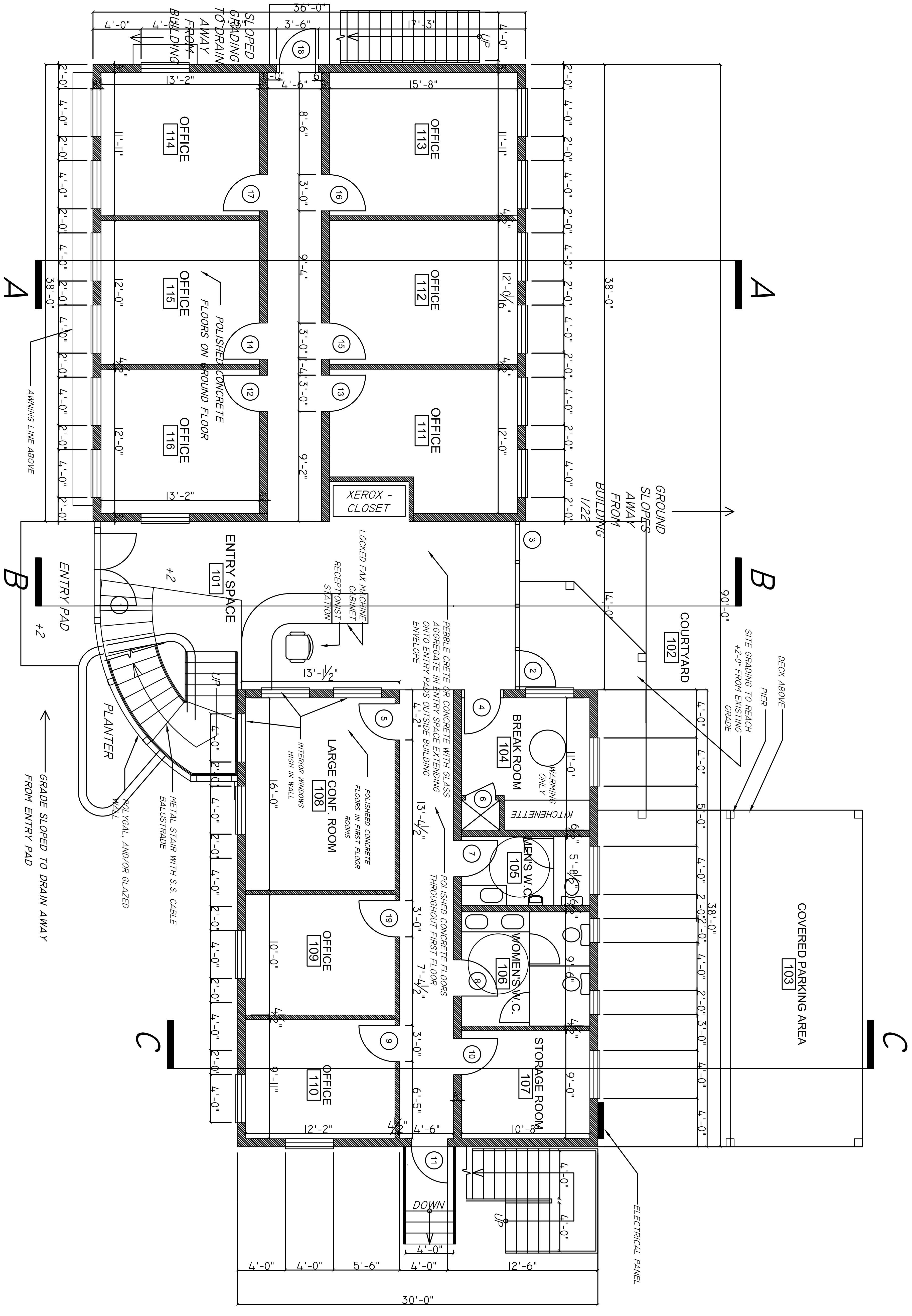
SCHEMATIC DESIGNS
 FOR
CORAL AVE.
 NMD OFFICE BUILDING
 ST. TAMMANY PARISH, LOUISIANA

MARK	DATE	DESCRIPTION
		CONTRACT
		SITE SURVEY
		50% SCHEMATIC
	5.27.08	100% SCHEMATIC
		90% DESIGN DOC
		100% DESIGN DOC
		50% CNSTRN DOC
		100% CNSTRN DOC
		FINAL PACKAGE

PROJECT NUMBER
 FILE NAME
 DRAWN BY RK
 CHECKED BY PW

COPYRIGHT: ALL DRAWINGS ARE THE PROPERTY OF FUTUREPROOF, LLC, AND CANNOT BE USED WITHOUT PERMISSION.

A2.1



1 FIRST FLOOR PLAN
 1/8" = 1'-0"

FUTUREPROOF
 822 N. BARONNE ST.
 NEW ORLEANS, LA
 70113
 T: 504-342-4925
 F: 504-342-4243
 OFFICE@FUTUREPROOFNO.LA.COM
 WWW.FUTUREPROOFNO.LA.COM



*FUTUREPROOF IS A LIMITED LIABILITY COMPANY AND CANNOT BE RESPONSIBLE FOR CONSTRUCTION. DRAWINGS MADE BY FUTUREPROOF MUST BE STAMPED BY A LICENSED ARCHITECT, ENGINEER, OR BUILDER TO BE USED FOR CONSTRUCTION. THE DRAWINGS HAVE BEEN MADE TO THE BEST OF FUTUREPROOF'S KNOWLEDGE. TO COMPLY WITH ACCEPTABLE BUILDING CODES, BUT SHOULD BE CHECKED BY THE LIABLE LICENSED PROFESSIONAL.

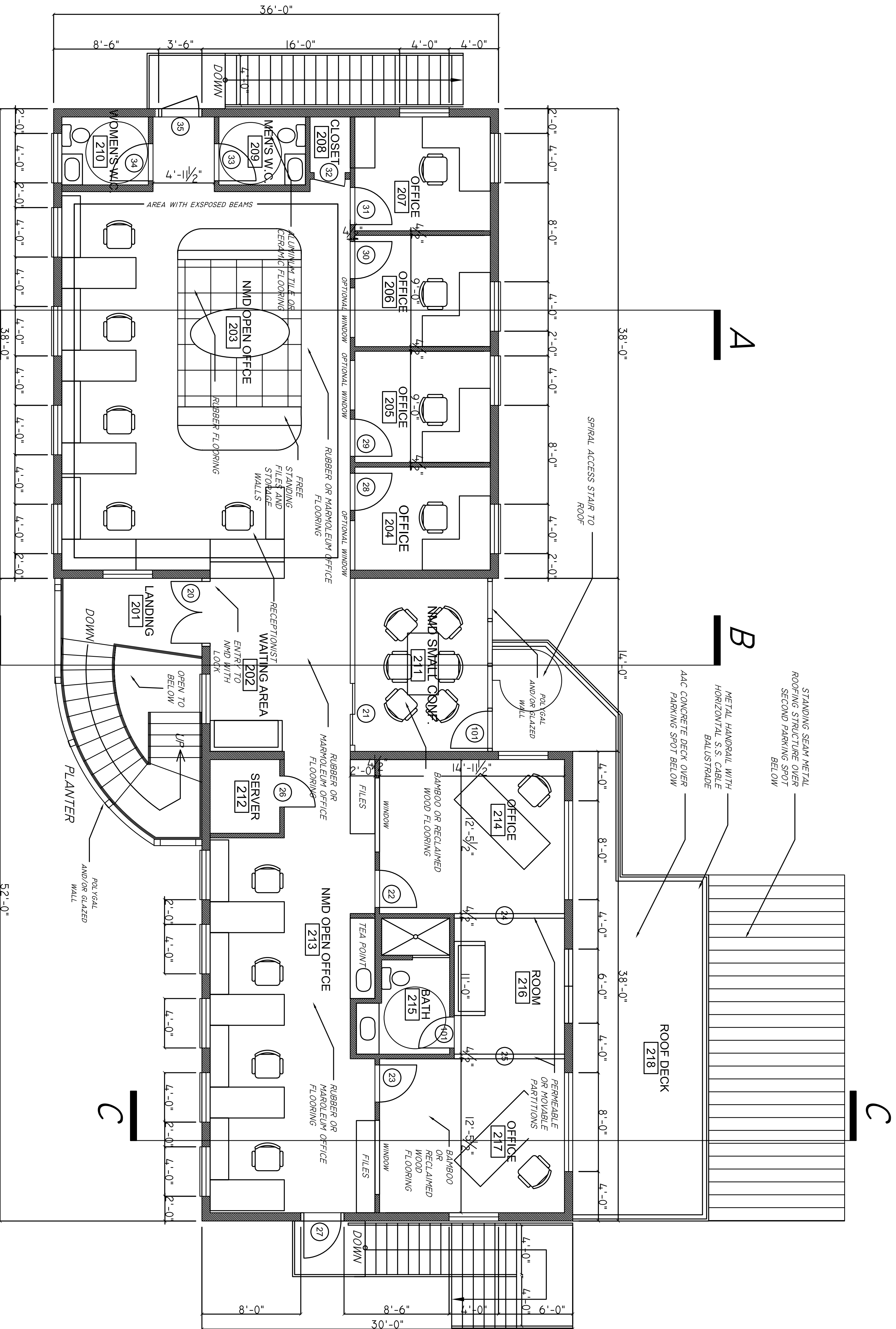
SCHMATIC DESIGNS
 FOR
CORAL AVE.
 NMD OFFICE BUILDING
 ST. TAMMANY PARISH, LOUISIANA

MARK	DATE	DESCRIPTION
		CONTRACT
		SITE SURVEY
		50% SCHEMATIC
	5.27.08	100% SCHEMATIC
		90% DESIGN DOC
		100% DESIGN DOC
		50% CDSRTN DOC
		100% CDSRTN DOC
		FINAL PACKAGE

PROJECT NUMBER
 DRAWN BY BK
 CHECKED BY PW

COPYRIGHT: ALL DRAWINGS ARE THE PROPERTY OF FUTUREPROOF L.L.C. AND CANNOT BE USED WITHOUT PERMISSION.

A2.2



SECOND FLOOR PLAN

1/8" = 1'-0"

FUTUREPROOF
 822 1/2 BARONNE ST.
 NEW ORLEANS, LA
 70113
 T: 504-342-4925
 F: 504-342-4243
 OFFICE@FUTUREPROOFNOLA.COM
 WWW.FUTUREPROOFNOLA.COM



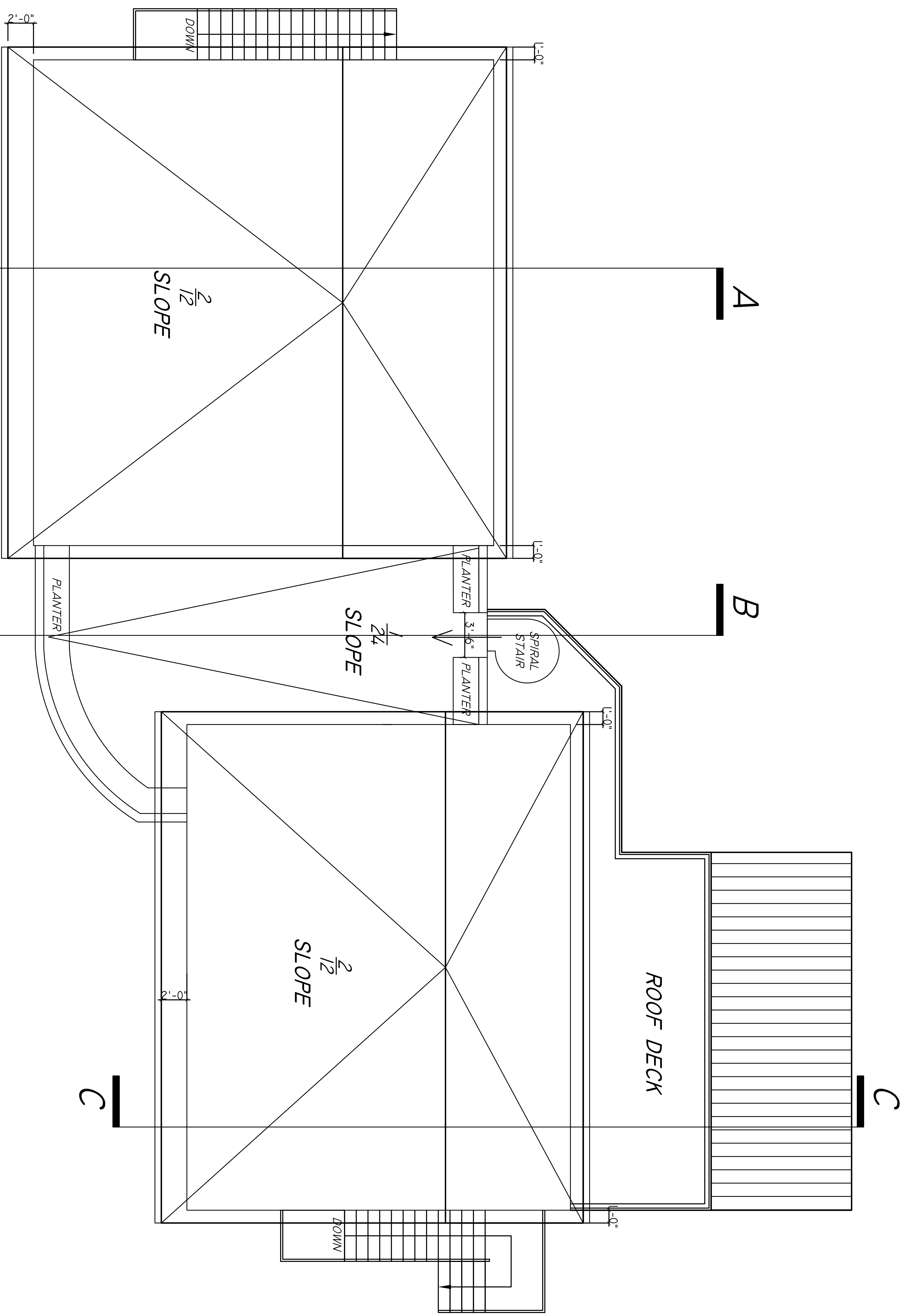
*FUTUREPROOF IS A LIMITED LIABILITY COMPANY AND CANNOT BE RESPONSIBLE FOR CONSTRUCTION DRAWINGS MADE BY FUTUREPROOF MUST BE STAMPED BY A LICENSED ARCHITECT, ENGINEER, OR BUILDER TO BE USED FOR CONSTRUCTION. THE DRAWINGS HAVE BEEN MADE TO THE BEST OF FUTUREPROOF'S KNOWLEDGE, TO COMPLY WITH ACCEPTABLE BUILDING CODES, BUT SHOULD BE CHECKED BY THE LIABLE LICENSED PROFESSIONAL.

SCHMATIC DESIGNS
 FOR
CORAL AVE.
 NMD OFFICE BUILDING
 ST. TAMMANY PARISH, LOUISIANA

MARK	DATE	DESCRIPTION
		CONTRACT
		SITE SURVEY
		50% SCHEMATIC
	5.27.08	100% SCHEMATIC
		90% DESIGN DOC
		100% DESIGN DOC
		50% CNSRTN DOC
		100% CNSRTN DOC
		FINAL PACKAGE

PROJECT NUMBER
 FILE NAME
 DRAWN BY RK
 CHECKED BY PW
 COPYRIGHT: ALL DRAWINGS ARE THE PROPERTY OF FUTUREPROOF LLC, AND CANNOT BE USED WITHOUT PERMISSION.

A2.3



1 ROOF PLAN
 1/8" = 1'-0"

FUTUREPROOF
 822 1/2 BARONNE ST.
 NEW ORLEANS, LA
 70113
 T: 504-342-4925
 F: 504-342-4243
 OFFICE@FUTUREPROOFNO.LA.COM
 WWW.FUTUREPROOFNO.LA.COM



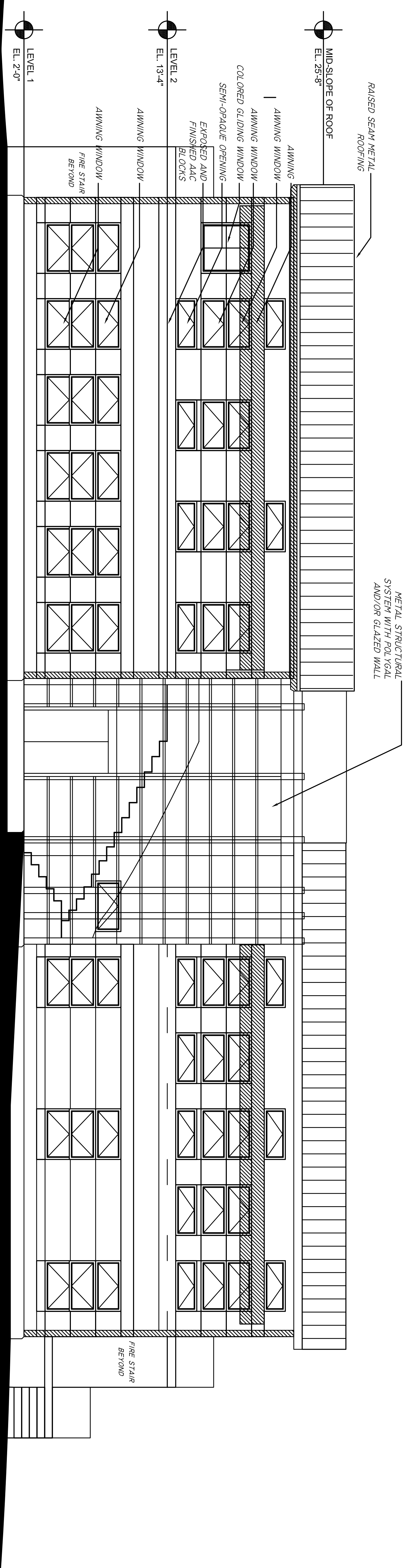
*FUTUREPROOF IS A LIMITED LIABILITY COMPANY AND CANNOT BE RESPONSIBLE FOR CONSTRUCTION. DRAWINGS MADE BY FUTUREPROOF MUST BE STAMPED BY A LICENSED ARCHITECT, ENGINEER, OR BUILDER TO BE USED FOR CONSTRUCTION. THE DRAWINGS HAVE BEEN MADE TO THE BEST OF FUTUREPROOF'S KNOWLEDGE, TO COMPLY WITH ACCEPTABLE BUILDING CODES, BUT SHOULD BE CHECKED BY THE LIABLE LICENSED PROFESSIONAL.

SCHEMATIC DESIGNS
 FOR
CORAL AVE.
 NMD OFFICE BUILDING
 ST. TAMMANY PARISH, LOUISIANA

MARK	DATE	DESCRIPTION
▨		CONTRACT
▨		SITE SURVEY
▨	5.27.08	50% SCHEMATIC
▨		100% SCHEMATIC
▨		90% DESIGN DOC
▨		100% DESIGN DOC
▨		50% CNSRTN DOC
▨		100% CNSRTN DOC
FINAL PACKAGE		

PROJECT NUMBER
 FILE NAME
 DRAWN BY RK
 CHECKED BY PW

COPYRIGHT: ALL DRAWINGS ARE THE PROPERTY OF FUTUREPROOF, LLC, AND CANNOT BE USED WITHOUT PERMISSION.



1
 SOUTHERN ELEVATION
 1/8" = 1'-0"

A3.1

FUTUREPROOF
 822 1/2 BARONNE ST.
 NEW ORLEANS, LA
 70113
 T: 504-342-4925
 F: 504-342-4243
 OFFICE@FUTUREPROOFNOLA.COM
 WWW.FUTUREPROOFNOLA.COM



*FUTUREPROOF IS A LIMITED LIABILITY COMPANY AND CANNOT BE RESPONSIBLE FOR CONSTRUCTION. DRAWINGS MADE BY FUTUREPROOF MUST BE STAMPED BY A LICENSED ARCHITECT, ENGINEER, OR BUILDER TO BE USED FOR CONSTRUCTION. THE DRAWINGS HAVE BEEN MADE TO THE BEST OF FUTUREPROOF'S KNOWLEDGE, TO COMPLY WITH ACCEPTABLE BUILDING CODES, BUT SHOULD BE CHECKED BY THE LIABLE LICENSED PROFESSIONAL.

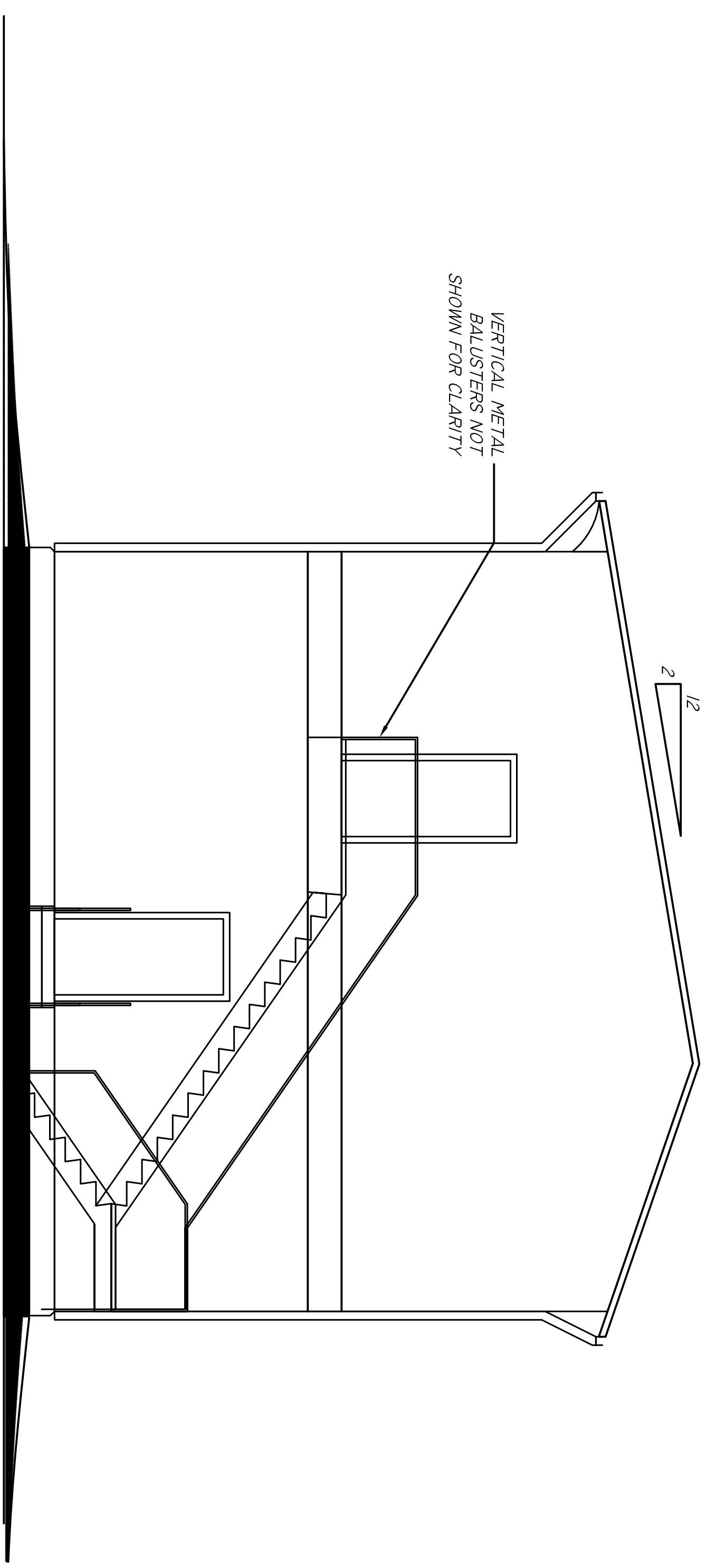
SCHEMATIC DESIGNS
 FOR
CORAL AVE.
 NMD OFFICE BUILDING
 ST. TAMMANY PARISH, LOUISIANA

MARK	DATE	DESCRIPTION
		CONTRACT
		SITE SURVEY
		50% SCHEMATIC
	5.27.08	100% SCHEMATIC
		90% DESIGN DOC
		100% DESIGN DOC
		50% CNSTRN DOC
		100% CNSTRN DOC
		FINAL PACKAGE

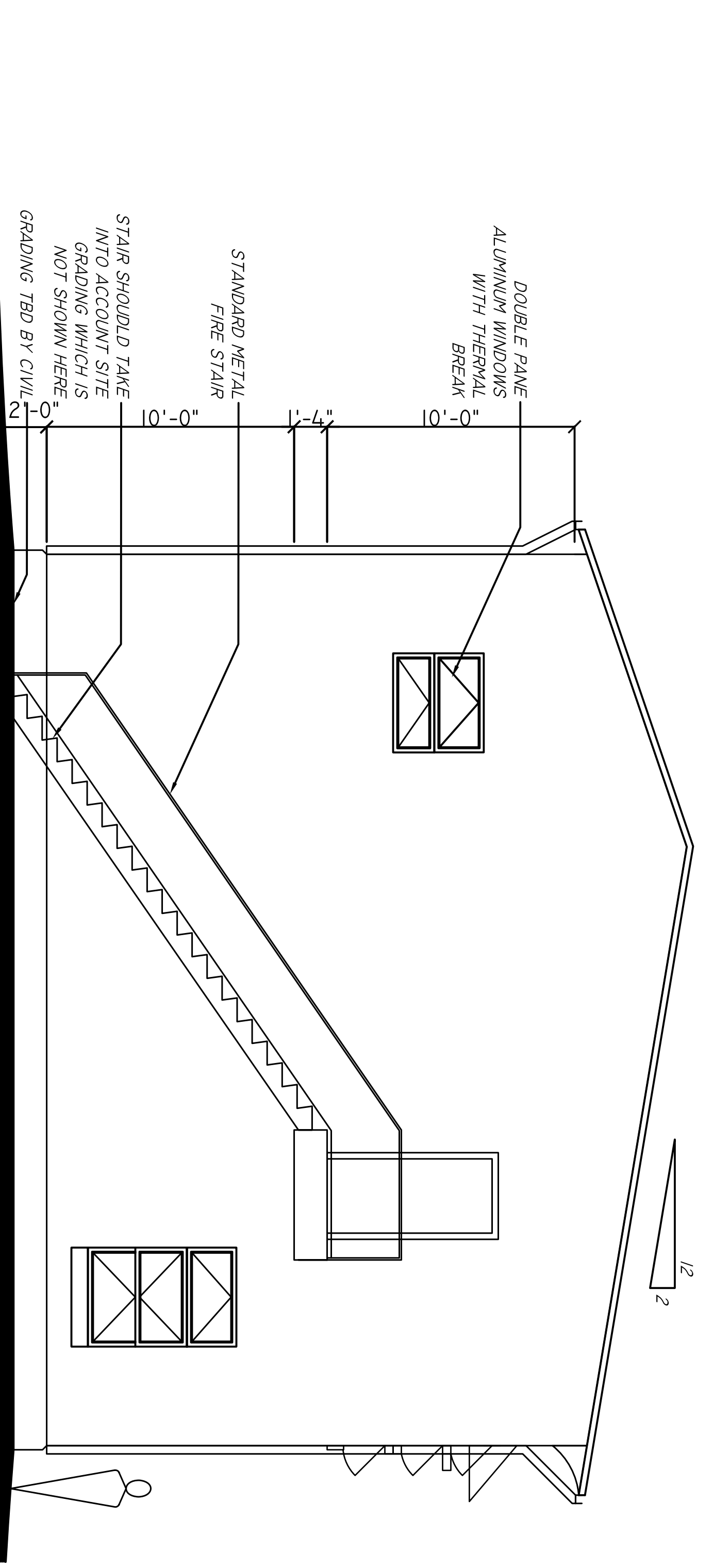
PROJECT NUMBER
 FILE NAME
 DRAWN BY RK
 CHECKED BY PW

COPYRIGHT: ALL DRAWINGS ARE THE PROPERTY OF FUTUREPROOF, LLC, AND CANNOT BE USED WITHOUT PERMISSION.

A3.2



1 EAST ELEVATION
 1/8" = 1'-0"



2 WEST ELEVATION
 1/8" = 1'-0"

FUTUREPROOF
 822 1/2 BARONNE ST.
 NEW ORLEANS, LA
 70113
 T: 504-342-4925
 F: 504-342-4243
 OFFICE@FUTUREPROOFNO.LA.COM
 WWW.FUTUREPROOFNO.LA.COM



*FUTUREPROOF IS A LIMITED LIABILITY COMPANY AND CANNOT BE RESPONSIBLE FOR CONSTRUCTION. DRAWINGS MADE BY FUTUREPROOF MUST BE STAMPED BY A LICENSED ARCHITECT, ENGINEER, OR BUILDER TO BE USED FOR CONSTRUCTION. THE DRAWINGS HAVE BEEN MADE TO THE BEST OF FUTUREPROOF'S KNOWLEDGE, TO COMPLY WITH ACCEPTABLE BUILDING CODES, BUT SHOULD BE CHECKED BY THE LIABLE LICENSED PROFESSIONAL.

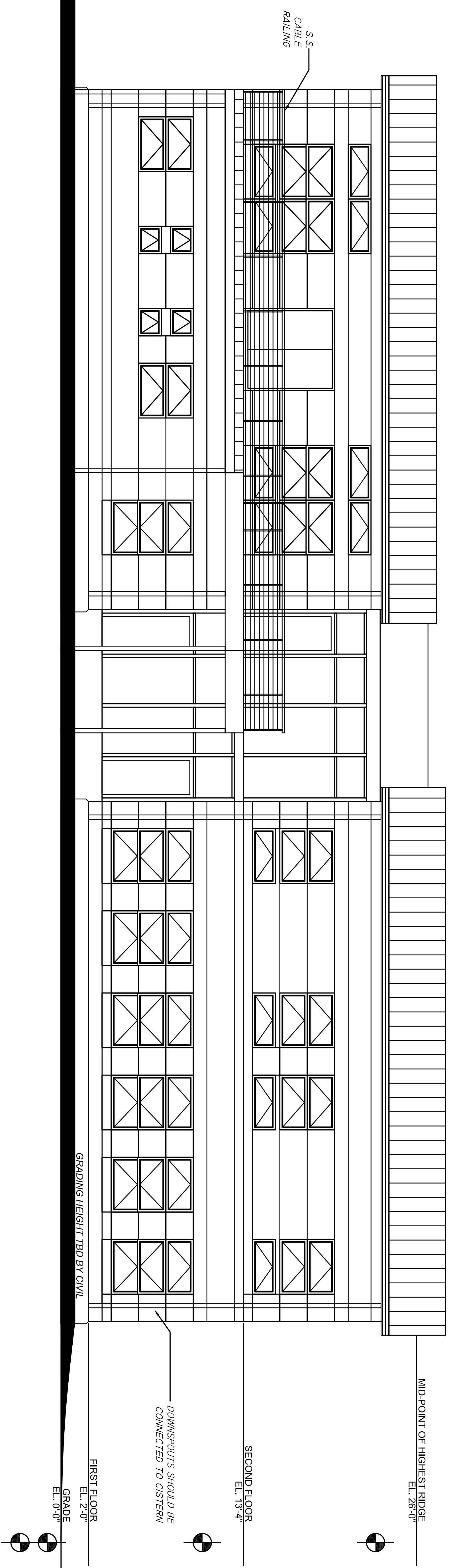
SCHEMATIC DESIGNS
 FOR
CORAL AVE.
 NMD OFFICE BUILDING
 ST. TAMMANY PARISH, LOUISIANA

MARK	DATE	DESCRIPTION
▨		CONTRACT
▨		SITE SURVEY
▨	5.27.08	50% SCHEMATIC
▨		100% SCHEMATIC
▨		90% DESIGN DOC
▨		100% DESIGN DOC
▨		50% CONSRTN DOC
▨		100% CONSRTN DOC
FINAL PACKAGE		

PROJECT NUMBER
 FILE NAME
 DRAWN BY RK
 CHECKED BY PW

COPYRIGHT: ALL DRAWINGS ARE THE PROPERTY OF FUTUREPROOF, LLC, AND CANNOT BE USED WITHOUT PERMISSION.

A3.3



1
 NORTHERN ELEVATION
 1/8" = 1'-0"

FUTUREPROOF
 822 1/2 BARONNE ST.
 NEW ORLEANS, LA
 70113
 T: 504-342-4925
 F: 504-342-4243
 OFFICE@FUTUREPROOFNO.LA.COM
 WWW.FUTUREPROOFNO.LA.COM



*FUTUREPROOF IS A LIMITED LIABILITY COMPANY AND CANNOT BE RESPONSIBLE FOR CONSTRUCTION. DRAWINGS MADE BY FUTUREPROOF MUST BE STAMPED BY A LICENSED ARCHITECT, ENGINEER, OR BUILDER TO BE USED FOR CONSTRUCTION. THE DRAWINGS HAVE BEEN MADE TO THE BEST OF FUTUREPROOF'S KNOWLEDGE, TO COMPLY WITH ACCEPTABLE BUILDING CODES, BUT SHOULD BE CHECKED BY THE LIABLE LICENSED PROFESSIONAL.

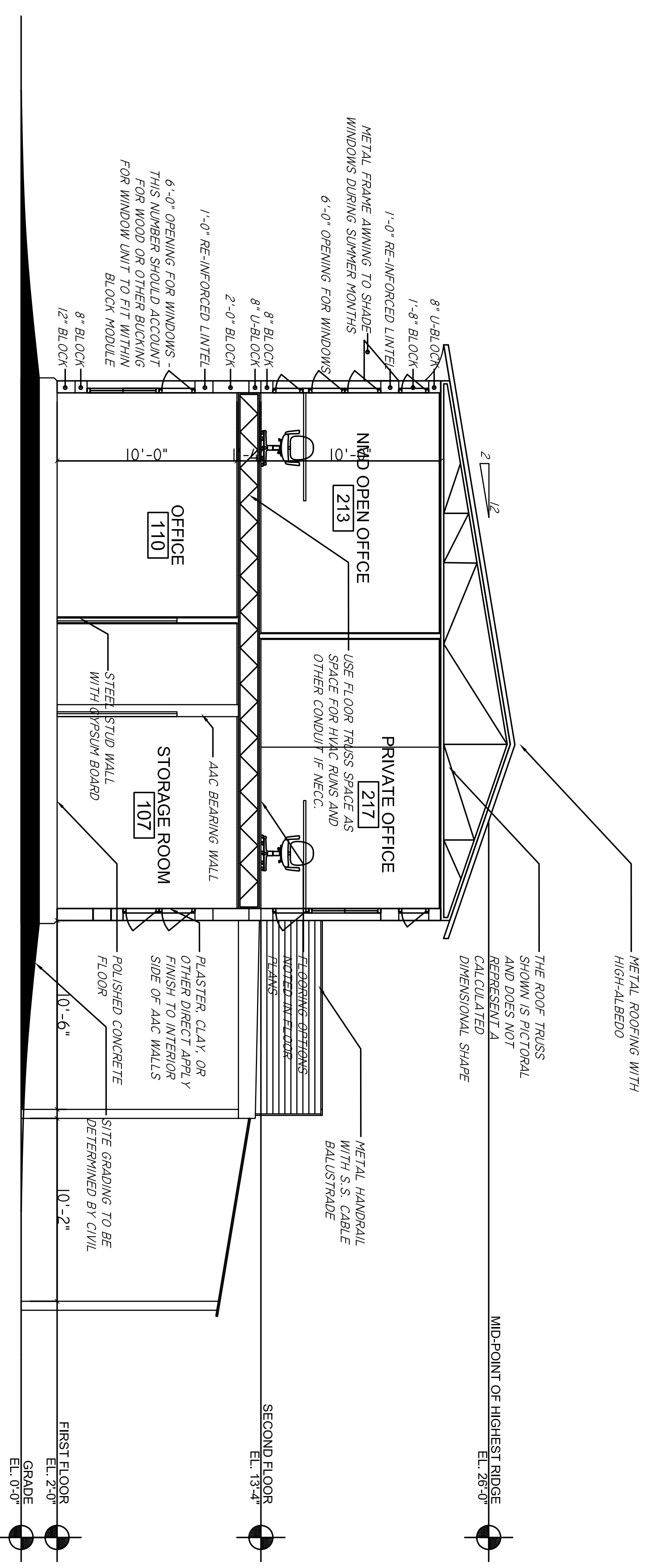
SCHEMATIC DESIGNS
 FOR
CORAL AVE.
 NMD OFFICE BUILDING
 ST. TAMMANY PARISH, LOUISIANA

MARK	DATE	DESCRIPTION
		CONTRACT
		SITE SURVEY
	5.27.08	50% SCHEMATIC
		100% SCHEMATIC
		90% DESIGN DOC
		100% DESIGN DOC
		50% CONSRTN DOC
		100% CONSRTN DOC
		FINAL PACKAGE

PROJECT NUMBER
 FILE NAME
 DRAWN BY RK
 CHECKED BY PW

COPYRIGHT: ALL DRAWINGS ARE THE PROPERTY OF FUTUREPROOF, LLC, AND CANNOT BE USED WITHOUT PERMISSION.

A4.1



SECTION AA THROUGH EASTERN WING
 1/8" = 1'-0"

FUTUREPROOF
 822 1/2 BARONNE ST.
 NEW ORLEANS, LA
 70113
 T: 504-342-4925
 F: 504-342-4243
 OFFICE@FUTUREPROOFNO.LA.COM
 WWW.FUTUREPROOFNO.LA.COM



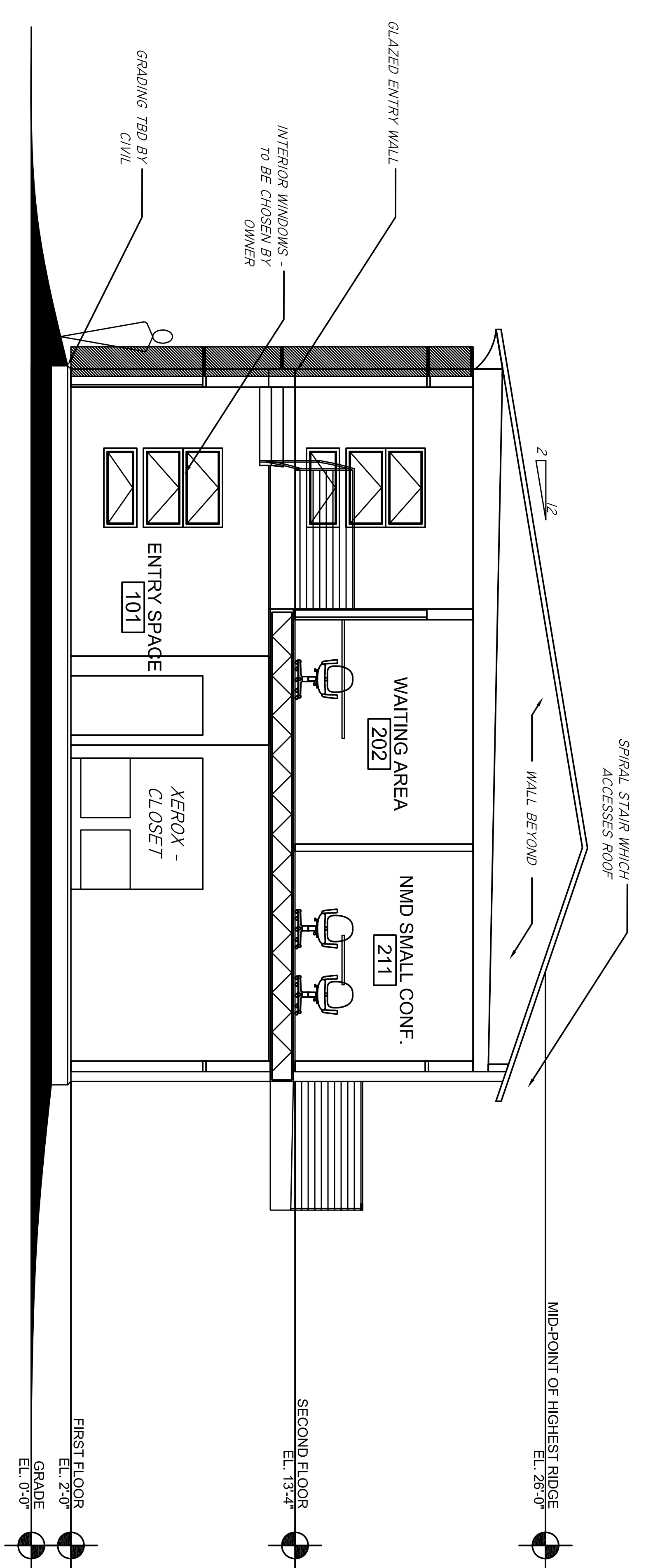
*FUTUREPROOF IS A LIMITED LIABILITY COMPANY AND CANNOT BE RESPONSIBLE FOR CONSTRUCTION. DRAWINGS MADE BY FUTUREPROOF MUST BE STAMPED BY A LICENSED ARCHITECT, ENGINEER, OR BUILDER TO BE USED FOR CONSTRUCTION. THE DRAWINGS HAVE BEEN MADE TO THE BEST OF FUTUREPROOF'S KNOWLEDGE, TO CONPLY WITH ACCEPTABLE BUILDING CODES, BUT SHOULD BE CHECKED BY THE LIABLE LICENSED PROFESSIONAL.

SCHEMATIC DESIGNS
 FOR
CORAL AVE.
 NMD OFFICE BUILDING
 ST. TAMMANY PARISH, LOUISIANA

MARK	DATE	DESCRIPTION
		CONTRACT
		SITE SURVEY
	5.27.08	50% SCHEMATIC
		100% SCHEMATIC
		90% DESIGN DOC
		100% DESIGN DOC
		50% CNSRTN DOC
		100% CNSRTN DOC
		FINAL PACKAGE

PROJECT NUMBER
 FILE NAME
 DRAWN BY RK
 CHECKED BY PW

COPYRIGHT: ALL DRAWINGS ARE THE PROPERTY OF FUTUREPROOF LLC, AND CANNOT BE USED WITHOUT PERMISSION.



SECTION BB THROUGH ENTRY
 1/8" = 1'-0"

FUTUREPROOF
 822 1/2 BARONNE ST.
 NEW ORLEANS, LA
 70113
 T: 504-342-4925
 F: 504-342-4243
 OFFICE@FUTUREPROOFNO.LA.COM
 WWW.FUTUREPROOFNO.LA.COM



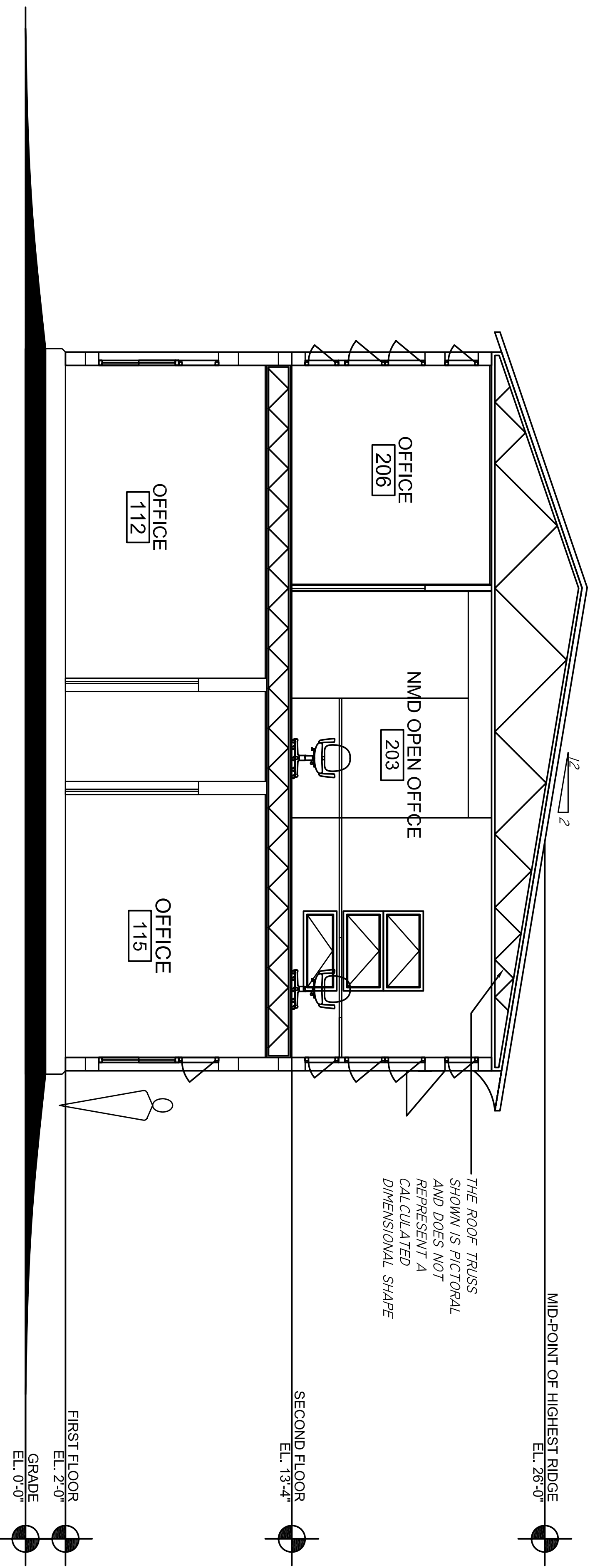
*FUTUREPROOF IS A LIMITED LIABILITY COMPANY AND CANNOT BE RESPONSIBLE FOR CONSTRUCTION. DRAWINGS MADE BY FUTUREPROOF MUST BE STAMPED BY A LICENSED ARCHITECT, ENGINEER, OR BUILDER TO BE USED FOR CONSTRUCTION. THE DRAWINGS HAVE BEEN MADE TO THE BEST OF FUTUREPROOF'S KNOWLEDGE, TO COMPLY WITH ACCEPTABLE BUILDING CODES, BUT SHOULD BE CHECKED BY THE LIABLE LICENSED PROFESSIONAL.

SCHEMATIC DESIGNS
 FOR
CORAL AVE.
 NMD OFFICE BUILDING
 ST. TAMMANY PARISH, LOUISIANA

MARK	DATE	DESCRIPTION
		CONTRACT
		SITE SURVEY
	5.27.08	50% SCHEMATIC
		100% SCHEMATIC
		90% DESIGN DOC
		100% DESIGN DOC
		50% CONSRTN DOC
		100% CONSRTN DOC
		FINAL PACKAGE

PROJECT NUMBER
 FILE NAME
 DRAWN BY RK
 CHECKED BY PW

COPYRIGHT: ALL DRAWINGS ARE THE PROPERTY OF FUTUREPROOF, LLC, AND CANNOT BE USED WITHOUT PERMISSION.



SECTION CC THROUGH WESTERN WING
 1/8" = 1'-0"